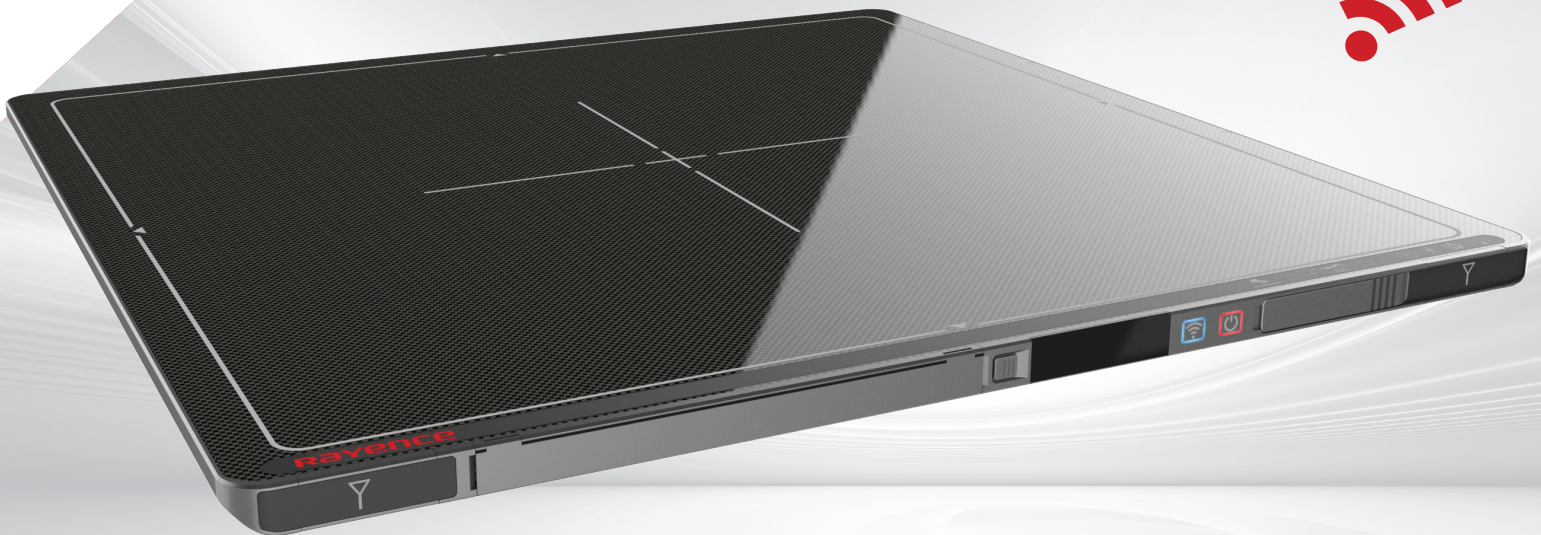


# rayence



17x17 Wireless Flat Panel Detector

## 1717WCC/WGC



The new, ergonomically designed Rayence C-Series Cesium Iodide and Gadolinium Oxysulfide wireless detectors are designed to offer new levels of handling, functionality and exceptional diagnostic image quality in the X-ray room and beyond.

iC  
series

## FEATURES

- ▲ Tapered, Recessed Edges
- ▲ Magnetic Battery Charger
- ▲ IPX6 Water Resistant
- ▲ Image Storage: 200 Images
- ▲ Room Sharing Functionality
- ▲ Auto Triggering Technology

[www.rayenceusa.com](http://www.rayenceusa.com)



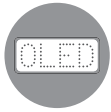
### Superb Image Quality

1717WCC/WGC's high Detector Quantum Efficiency (DQE) achieves superb image quality with low patient dose.



### Lightweight & Fast

1717WCC/WGC weighs only 7.7lb. Image preview occurs in less than 2 seconds.



### High Visibility OLED

Illuminated OLED window brightly indicates flat panel detector status to the user.



### Ergonomic Design

Curved edges and a non-slip surface makes lifting and handling easier.



### Durability

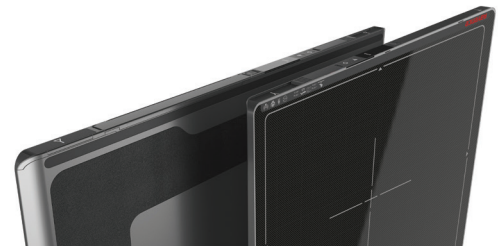
Supporting up to 660 lb., the 1717WCC / WGC is manufactured with a seamless magnesium, unibody construction and is combined with a shock, vibration, and scratch resistant carbon fiber composition.



### Water Resistant (IPX6)

1717WCC/WGC is water resistant to most typical water spills in a hospital as well as in outdoor applications.

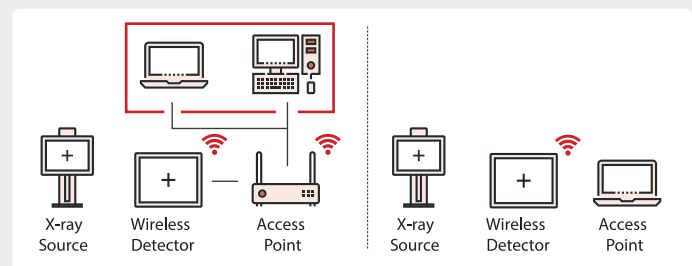
**“ Providing patient throughput in your hospital and beyond ”**



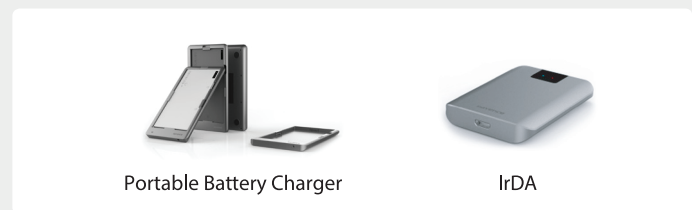
### 1717WCC/WGC Specifications

ScintillatorType	1717WCC : CsI:Tl 1717WGC : Gd <sub>2</sub> O <sub>2</sub> S:Tb	-
Dimension	18.1 x 18.1 x 0.6	in
Weight	7.7 (incl. battery)	lbs
Total Pixel Area	430.1 x 430.1	Pixels
Pixel Pitch	140	µm
Effective Pixel Matrix	3012 x 3012	Pixels
A/D Conversion	14 / 16	bits
Preview time	≤2 (2x2 binning)	sec
Energy range	40 ~ 150	kVp
Pressure	Distributed : 661 Point : 330	lbs
Limiting Resolution	Min. 2.5 / Max. 3.57	lp / mm
Battery OperatingTime	Typ. 4	Hours

### Detector Room Sharing



### Options



## Contact us