

Wall Mount Transmitter

Model TB-318

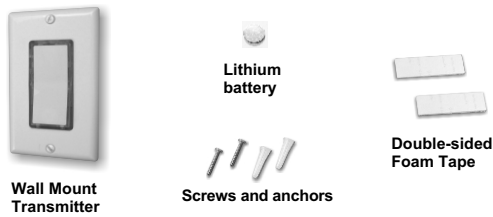
1. INTRODUCTION

Thank you for your purchase of a SkylinkHome™ Wall Mount Transmitter, Model TB-318. This transmitter allows you to wirelessly operate lighting / home automation with the SkylinkHome™ receiver modules.

All wireless signal communications within the SkylinkHome™ System are based on rolling code technology to ensure highest security is used.

You will find the following in this package:

- Wall Mount Transmitter
- Mounting Accessories & Double-sided Foam Tape
- Lithium Battery CR-2032
- User's Instructions

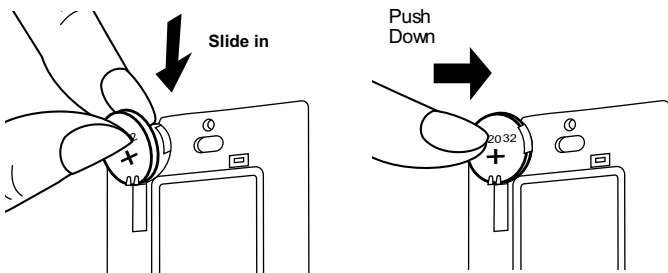
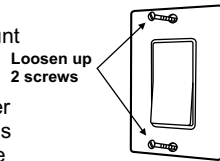


2. PROGRAMMING TRANSMITTER TO RECEIVER MODULE

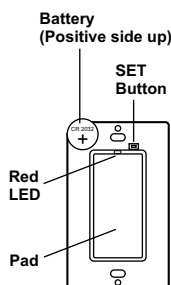
In order to operate a receiver module remotely, a transmitter must be programmed to the receiver module.

To program a transmitter into the receiver module, follow the instructions below.

1. Remove the front wall plate from the Wall Mount Transmitter by loosening the 2 screws.
2. Insert the battery to the Wall Mount Transmitter as shown. Positive side up. When the battery is installed, the red LED on the transmitter will be on for 1 second.



3. You may transmit the programming signal from the transmitter by pressing the "SET" button on the transmitter. The red LED on the transmitter will be on for 15 seconds.
4. Put the receiver module that you plan to program into programming mode. Refer to the User's Instructions of that receiver module.
5. Activate the Wall Mount Transmitter by pressing the pad on the front. Its red LED will flash then off.
6. Once the transmitter is programmed, the receiver module will quit from programming mode.
7. Now the programmed transmitter is ready to be used.

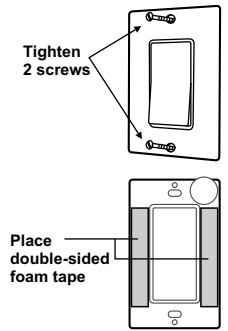


3. INSTALLATION

After programming, you are now ready to install the Wall Mount Transmitter.

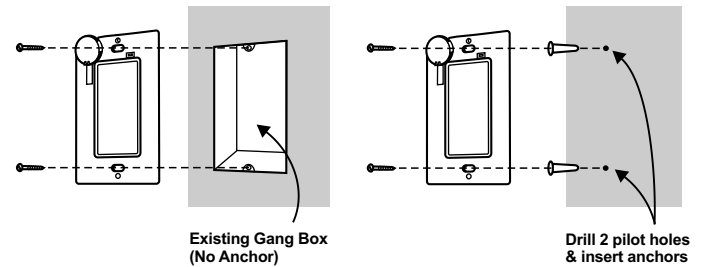
You may use double sided foam tape to stick the transmitter on the wall, or you may use screws to mount the transmitter.

Using double sided foam tape:
Place the 2 double sided foam tapes on the back of the back plate. Clean the surface of the wall where you plan to install the back plate. Peel off the foam tape cover and stick it to the wall surface.



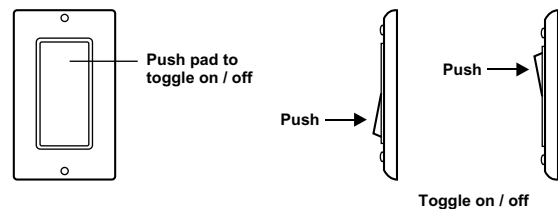
Using screws:

If you are using screws, tighten the back plate of the wall mount transmitter by the 2 screws provided. If you are installing the back plate to an existing wall switch with wall box, no need to use the anchors. Otherwise, drill 2 small pilot holes based on the 2 mounting screw positions and insert the anchors before tightening the back plate with screws. After securing the back plate, either by double sided foam tape or screws, tighten the 2 screws on the front to secure the front plate.



4. ON / OFF OPERATION

Pushing the pad from one position to the other will toggle the status of a load, i.e. when the light is off, pushing the pad will turn on the light, and vice versa.



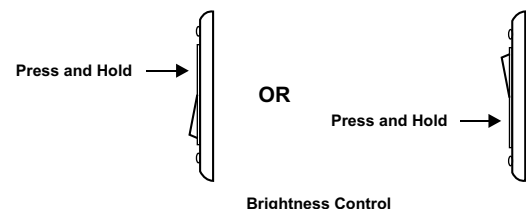
5. BRIGHTNESS CONTROL OPERATION

Besides turning on and off a load, you may also control the brightness of a light if the receiver module and the light bulb is dimmable, i.e. either incandescent light or dimmable compact fluorescent light.

To change the brightness, first turn on the light by pushing the pad.

Then, press and hold the pad after the light is on will change the brightness of the light. When the desired brightness is reached, release the pad.

Press and hold the pad again to change the brightness in the opposite way. When the desired brightness is reached, release the pad.



6. ERASING WALL MOUNT TRANSMITTER FROM RECEIVERS

Erasing Wall Mount transmitter from the ON/OFF/Dimming Control model MD-318 or ON / OFF Control model MR-318

You may erase a transmitter from the receiver module, but you cannot erase a specific device directly, you must erase all the wireless devices, then program the ones you want to keep. Follow the instructions below to erase programmed transmitters.

1. Power off the receiver module.
2. Press the SET button on the transmitter.
3. Press and hold the programmed pad on the transmitter for at least 2 seconds. Do not release it until step 5.
4. Power up the receiver module, you will hear a beep.
5. You may release the pad on the transmitter.
6. When the pad is release, the receiver will beep, indicating you have successfully erased all the devices from the lighting receiver.

Erasing wall mount transmitter from other receivers

If you would like to erase a wall mount transmitter from other receiver modules, such as WR-001, WE-001, PA-318, PR-318, PL-318, LS-318, etc., Please also refer to the user's instructions of that receiver module.

Note: The difference between programming a TC remote and programming a TB remote is as following:

1. Press the PROG button on the back of a TC remote will activate programming.
2. Press the SET button on a TB transmitter will activate programming.

7. BATTERY

When the operating range is reduced, or when the red LED does not flash during operation, it is time to replace the battery. Follow the same procedure as installing the battery in section 2 of this manual to replace the battery.

Note: Dispose of old batteries promptly and properly.

8. FCC

The Remote Control is approved by the FCC and it complies with Part 15 of the FCC Rules. Its operation is subject to the following two conditions :

1. This device may not cause harmful interference.
2. This device must accept any interference that may cause undesired operation.

WARNING:

Changes or modifications to this unit not expressly approved by the party responsible of compliance could void the user's authority to operate the equipment.

9. WARRANTY

If, within one year from date of purchase, this product should become defective (except battery), due to faulty workmanship or materials, it will be repaired or replaced, without charge. Proof of purchase and a Return Authorization are required.

10. CUSTOMER SERVICE

If you would like to

- find out the up-to-date specifications
- know more about features and applications
- download documents, i.e. user's instructions
- order Skylink products

or if you have difficulty getting products to work, please:

1. visit our FAQ section at www.skylinkhome.com, or
2. email us at support@skylinkhome.com, or
3. call our toll free at 1-800-304-1187 from Monday to Friday, 9 am to 5 pm EST. Fax (800) 286-1320

11. ACCESSORIES

The SkylinkHome™ System consists of many other devices such as SkylinkHome™ Remotes, Motion Sensor, ON/OFF Wall Switch, Wall Dimmer, Plug-In Dimmer with or without Repeater, Plug-In ON/OFF Control (Outdoor/Indoor), Screw-In Dimmer, ON/OFF/Dimming Control, ON/OFF Control, Smart Button™ Garage Door Control, etc. Please visit Skylink website at www.skylinkhome.com for more information.



CUSTOMER SERVICE

17 Sheard Avenue, Brampton, Ontario, Canada L6Y 1J3
Email: support@skylinkhome.com
<http://www.skylinkhome.com>
P/N. 101A396
Patent Pending
©2010 SKYLINK GROUP