

# *Energizer*<sup>®</sup>



CONNECT<sup>™</sup>

## Step ③

---

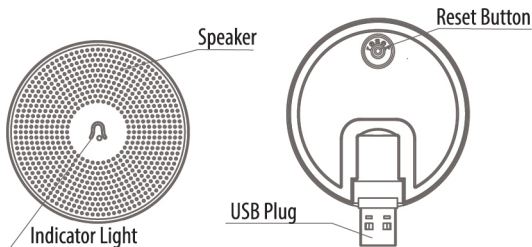
### Smart Video Doorbell

## WIRELESS CHIME SETUP GUIDE

v1.2

# Use this guide to finalize setup of your Wireless Chime.

## Wireless Chime Features



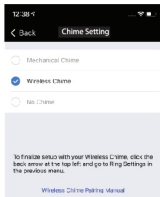
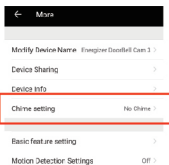
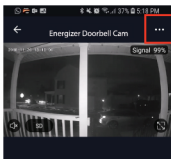
System Specifications	
Power	DC 5V, USB power supply
Reset Button	Click the Reset Button to put the Wireless Chime in pairing mode. Press and hold the Reset Button for 5 seconds to restore the Wireless Chime to factory settings. It will blink quickly to confirm that the Wireless Chime has been reset.
Indicator Light	Blue light blinking: Wireless Chime is in Pairing Mode Blue solid light: Paired to Smart Video Doorbell

©2019 Energizer. Energizer and certain graphic designs are trademarks of Energizer Brands, LLC and related subsidiaries and are used under license by Jem Connected IOT, Inc. All other brand names are trademarks of their respective owners. Neither Jem Connected IOT, Inc. nor Energizer Brands, LLC is affiliated with the respective owners of their trademarks.

**1**

First, make sure your doorbell's Chime Setting is set to "Wireless Chime".

You can set this when accessing your doorbell for the first time, or later in your doorbell's settings.



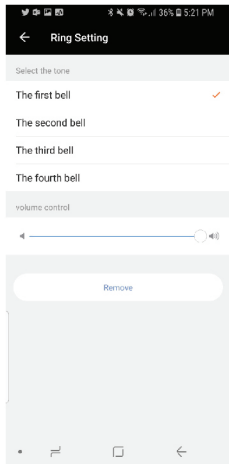
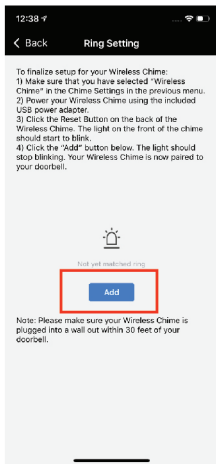
**Energizer**

**2**

## 4

Go to Ring settings within the device settings of the doorbell. Click the "Add" button.

The light on the Wireless Chime should stop blinking. Your Wireless Chime is now paired to your doorbell.



NOTE: You can choose ringtone, sound and volume.

**Energizer**



3