

3rd Generation Smart Lock Installation Guide

What's in the box



Smart Lock Pro
(4 AA batteries included)



Mounting Plate



3 Adapters



Adhesive Strip

What you'll need to provide



Phillips Screwdriver

1. Prepare your existing deadbolt

Use the supplied adhesive strip to hold the keyed side of the lock in place.



2. Remove your existing thumbturn

Unscrew and remove the screws from your existing deadbolt thumbturn. If there is an additional back plate, remove that as well. Be sure to unlock your deadbolt before removing the thumbturn entirely.





3. Prepare the Mounting Plate

The included mounting plate has two adjustable screw-holes that can be repositioned as needed. Remove the screws from the thumbturn and insert them into the front of the mounting plate.



4. Attach the Mounting Plate


Tighten the screws by hand until the mounting plate is secured against the door.





5. Choose your adapter

Standard Deadbolt Compatibility Chart

BRAND	ADAPTER
Baldwin - Estate/Images*	
Baldwin Reserve/Prestige	
Defiant	
Emtek	
Kwikset*	
Omnia**	
Schlage***	
Weiser	
Weslock	

* Baldwin and Kwikset Deadbolts installed before 1997 have unique installation requirements, please contact us at 844-AUGUST1 (284-8781) and we will walk you through installation.

** Compatible only with non-mortise, standard Omnia deadbolts.

*** Commercial grade Schlage B560 deadbolts require supplemental screws. If your Schlage screws are too short please contact us at support@august.com

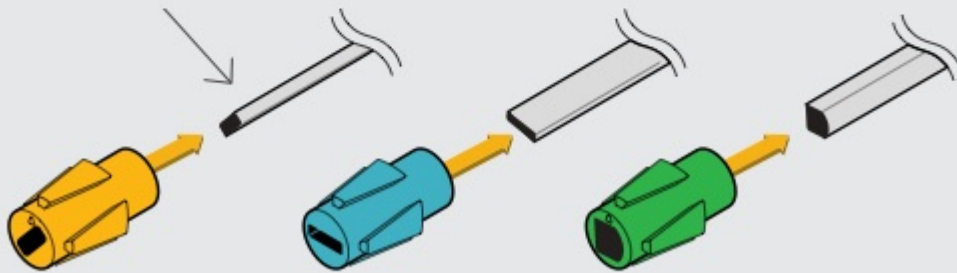
Select your adapter from the Compatibility Chart above.

(If your lock brand is not in the chart, slide each adapter onto the tailpiece to find the right one. The correct adapter will have one of the nubs pointing up.)



Front View

Deadbolt Tail Piece



Adapter Alignment

6. Attach the Correct Adapter

Place the correct adapter onto the tail piece. One of the triangle shaped nubs should facing up if you have the correct adapter.



7. Rotate to unlocked position

Rotate the thumbturn all the way to the unlocked position, which may take some moderate force. The direction you turn will depend on which side of the door your deadbolt is on.



8. Open the wing latches

Pull out both side wing latches to prepare for mounting.



9. Attach the August Smart Lock

Before placing the August Smart Lock on the door, ensure the thumbturn is in the correct unlocked position.

Slide the August Smart Lock over the tailpiece and attach it to the mounting plate. Make sure the back of the lock is flush with the door. To secure the August Smart Lock, clamp down both side wing latches to the mounting plate completely.





10. Remove the faceplate

Slide the top of the front face upwards to remove the battery compartment cover.



11. Remove the battery tab

While holding the batteries in place, remove the clear plastic battery isolation tab on the left side. Make sure that the battery is properly seated in its compartment.

NOTE: Avoid pulling the longer gray tab, as it will remove all of the batteries.



12. Replace the faceplate

Place the faceplate back onto the August Smart Lock over the batteries until it clicks into place.



13. Install DoorSense™

DoorSense™ enables your lock to know when the door is open and closed. For instructions on installing DoorSense™, please see: [DoorSense™ Installation Guide for August Smart Lock](#)

14. Use the August Home app to complete setup

Download and install the August Home app. Select "Get Started" from the home screen, or, if already logged in to the app, select "Set Up a Lock" from the main menu.

