



EVC200 Quick Start Guide

Specifications

- The EVC200 can be included with, and controlled, using any compatible Z-Wave controller. The EVC200 also acts as signal repeater for the Z-Wave network, extending the Z-Wave transmission as part of the “mesh network”. The EVC200 is designed to work with a pre-installed standard levered ball type water shut off valve. If your water shut off valve is not a levered type, consult a plumber to have your shut off valve changed to a levered type.
- The EVC200 is designed to be installed onto an existing levered type ball valve as detailed below. **Caution:** If you do not have experience installing and configuring EVC200 type devices, please consult a professional installer.

- Z-Wave Plus Certified
- Open/Closed toggle Button/Green LED indicator
- U.S. Standard Z-Wave Frequency
- Supported Valve Sizes: ½", ¾", 1" (Optional 1.25" and 1.5")
- Requires 12V DC/1amp power, AC Adapter Included
- Wireless Range: 30M (line of sight)
- Close/Open Time: ~ 18 seconds
- High Torque Geared Valve Motor: ~ 11lbf (~15Nm)
- Male 6 pin PS2 connector (cable 38"/980mm)
- Universal AC Adapter Included (cable length 48"/1230mm)
- Note: Requires Z-Wave Controller or Gateway
- Optional Plug-In Wired Leak Sensor
- Optional Output for second "slave" Valve Robot, see Condo Kits
- Optional Integrated Ball Valve



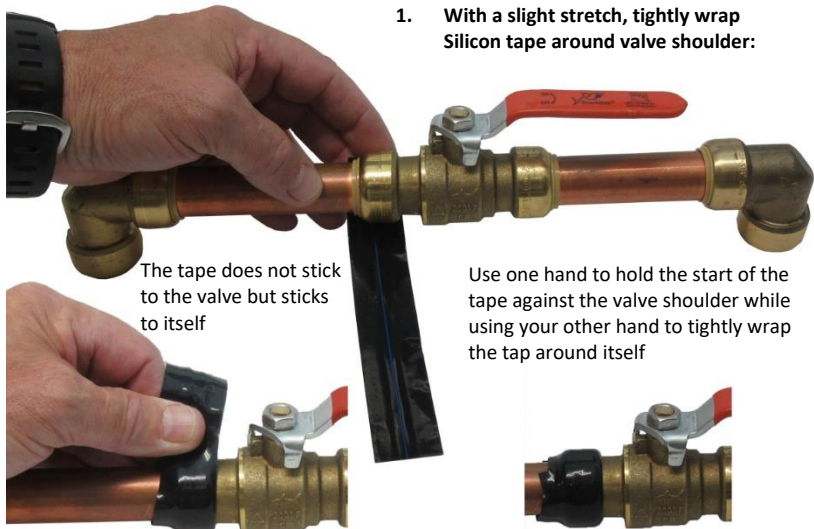
Including the EVC200 Z-Wave Automatic Valve with a Z-Wave Controller

Including or Adding the EVC200 to a Z-Wave Controller: Place the Z-Wave controller in inclusion (learning) mode. Press the Power button 3 or more times rapidly (within 0.5 seconds). Once the controller has acknowledged the inclusion, the EVC200 has been included in the Z-Wave network with the controller. Exit the including mode and you should see the EVC200 Automatic Valve under your list of devices. Some devices (like the Vera controller) require that you reload or refresh the controller so it polls, identifies, and configures the new device. Once the configuration is complete, you can control the powered valve through your Z-Wave controller’s user interface. The valve supports Open or On command and Closed or Off command through a standard Z-Wave controller. The valve can also be open or closed with a single push of the power button on the unit, toggling from open to closed or closed to open. The valve can also be open/closed manually by hand by pushing the clutch pin.

Excluding or Removing the EVC200 from a Z-Wave Controller: Place your Z-Wave controller in exclusion (un-learning) mode. Once the controller is in exclusion mode, bring the EVC200 close to the Z-Wave controller (several feet) and press the Power button 3 or more times rapidly (within 0.5 seconds). Once the controller has acknowledged the exclusion, the EVC200 has been cleared of any previous inclusions. (It is recommended to keep the EVC200 within 1M/3ft of the controller when including or removing)

There can be a number of reasons that the EVC200 does not work with your controller. If the inclusion process does not work the first time, repeat the process but try “excluding” first and then complete the “inclusion” process.

Mechanical Installation:

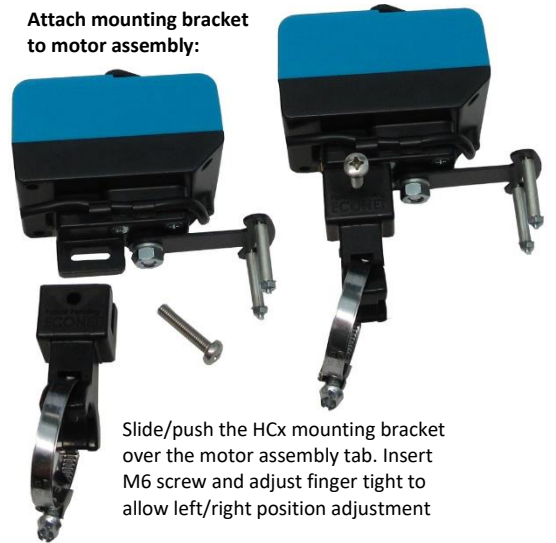


1. With a slight stretch, tightly wrap Silicon tape around valve shoulder:

The tape does not stick to the valve but sticks to itself

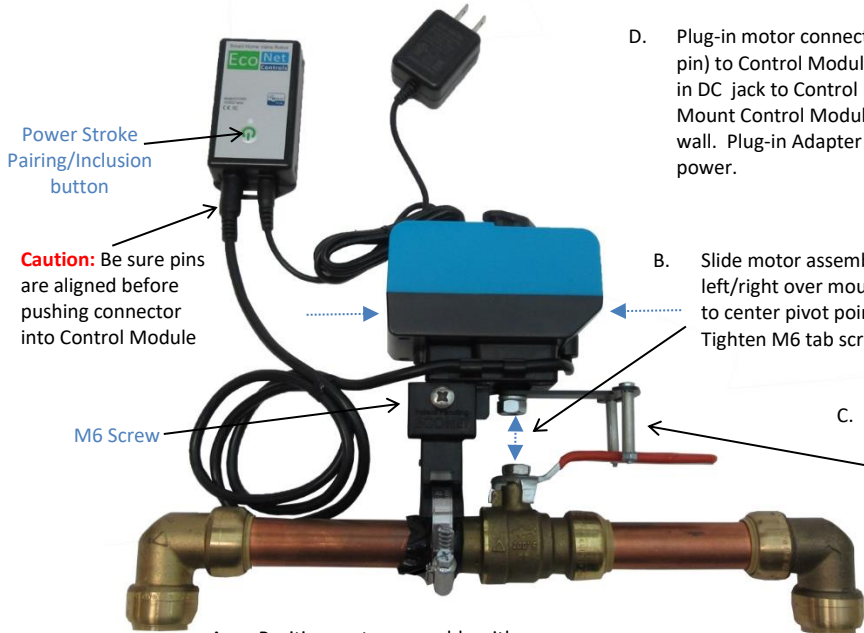
Use one hand to hold the start of the tape against the valve shoulder while using your other hand to tightly wrap the tap around itself

2. Attach mounting bracket to motor assembly:



Slide/push the HCx mounting bracket over the motor assembly tab. Insert M6 screw and adjust finger tight to allow left/right position adjustment

3. Mount motor assembly on to valve:



- D. Plug-in motor connector (6 pin) to Control Module. Plug-in DC jack to Control Module. Mount Control Module to wall. Plug-in Adapter to AC power.

Power Stroke Pairing/Inclusion button

Caution: Be sure pins are aligned before pushing connector into Control Module

- B. Slide motor assembly left/right over mounting tab to center pivot points. Tighten M6 tab screw.

M6 Screw

- C. Position lever pins tight against valve handle and tighten screw/nut into position. Test power stroke and adjust pin position as required for complete open/close of valve.

- A. Position motor assembly with mounting bracket over valve shoulder. Adjust mounting position so that pivot points are centered, even and level. Tighten clamp to fix assembly into position.

EVC200 Z-Wave Plus Commands:			
Z-Wave Network inclusion	<p>Putting your controller into inclusion mode (adding new devices). Press the Power button 3 or more times rapidly (within 1.5 seconds). It is recommended to keep the EVC200 within 1M/3ft of the controller. (Set controller to inclusion mode first)</p> <p>While waiting for inclusion/adding commands from controller, LED blinks 1 time per second. If after 30 seconds device is still not included (timeout), LED will blink rapidly for 1 seconds signaling an including/adding error.</p>		
Z-Wave Network exclusion	<p>Power the button 3 or more times rapidly (within 1.5 seconds). It is recommended to keep the EVC200 within 1M/3ft of the controller. (Set controller to inclusion mode first)</p> <p>While waiting for inclusion/adding commands from controller, LED blinks 1 time per second. If after 30 seconds device is still not included (timeout), LED will blink rapidly for 1 seconds signaling the including/adding error.</p>		
Device Reset	<p>Press and hold the Power button for 10 seconds. The device will send the reset notification to the list node in the group-1 and erases the device memory. The led light flashes acknowledging successful reset.</p> <p>Note: This should only be used in the event your networks primary controller is missing or otherwise inoperable</p>		
Association capabilities	<p>This device supports only the Lifeline Association Group which holds a maximum of 1 node ID. The only command sent to this group is the Device Reset Locally message.</p> <p>This device cannot be used to control other devices by association. The pushbutton only opens and closes the water valve connected to it.</p>		
Z-Wave Command Class	<p>COMMAND_CLASS_ZWAVEPLUS_INFO, COMMAND_CLASS_SWITCH_BINARY, COMMAND_CLASS_ASSOCIATION, COMMAND_CLASS_ASSOCIATION_GRP_INFO, COMMAND_CLASS_VERSION, COMMAND_CLASS_MANUFACTURER_SPECIFIC, COMMAND_CLASS_DEVICE_RESET_LOCALLY, COMMAND_CLASS_POWERLEVEL</p>		

If you have any questions or if you are experiencing any issues with the EVC200, please contact EcoNet Controls Support via email at support@EcoNetControls.com or by phone at 888-320-9188. For more details, please visit www.EcoNetControls.com.