



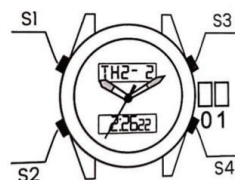
User Manual

Frequency

A. Time Setting (Digital)

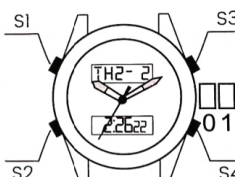
Under Normal Time Display Mode:

1. Press S2 until the display screen starts flashing, then press S4 to until it switches to the desired parameter (Minute, Hour, Day, Month, and Week)
2. Press S3 to adjust the desired item.



B. Time Setting (Quartz)

1. Pull out the crown to position 1.
2. Turn the crown until the correct time appears.
3. Push the crown back into position 0



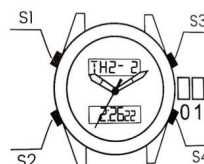
1

II. CHRONOGRAPH

The display range of the chronograph is 23 hours 59 minutes, 59.99 second.

Under Normal Time Display Mode:

Press S2 one time to enter chronograph mode
Event Mode: S3—Start, S3—Stop (Repeat S3, Time In/Out), S4—Reset Split Mode: S3—Start, S4—Split, S\$—Release (Repeat S4 for each split), S3—Stop, S4—Reset



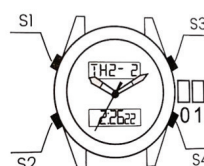
III. ALARM

Under Normal Time Display mode:

1. Press S2 two times to enter alarm setting mode
2. Press S4 until it switch to the desired parameter
3. Press S3 to select desire value accordingly
4. Press S4 to finish setting alarm

Under Alarm Setting Mode:

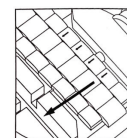
Press S3 to turn on/off the alarm and chime function



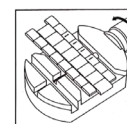
2

IV. Stainless Steel Bracelets Adjustment Instruction 1

1). Place the bracelet onto the link removal tool, insert tip from the tool into the hole on the underside of the band. (removal direction should be the direction where the pin to be push out)



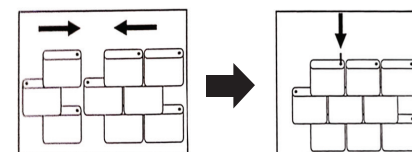
2). Place the link removal tool horizontally, turn the pusher of the removal tool clock-wise to push out the pin from the band. Use a clamp to take out the pushed pin.



3). Confirm the needed quantities of band cartage to be removed

4). After taking out needed band cartage, place the band back together following the red arrow sign shown in the picture

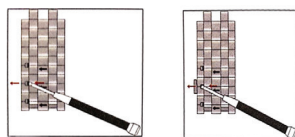
5). Use a hammer to hammer back the band cartage into the band link



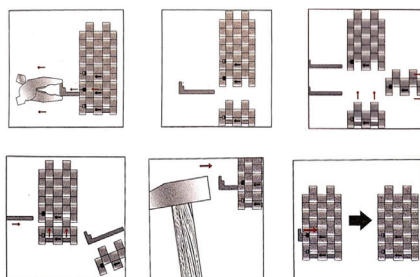
3

V. Stainless Steel Bracelets Adjustment Instruction 2

- Follow the arrow sign direction underneath the band, use a mini screw-driver and push outward following the arrow direction.
- Push out the band cartage



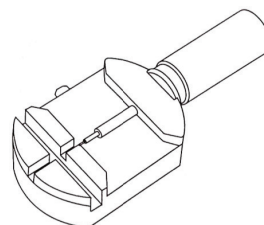
- Use a clamp to take out the band cartage
- Once the band cartage is taken out, you may disassemble the band
- After removing the necessary number of links, tap the remaining pins back into places using the link removal tool.



4

CAUTION:

Please make sure the insert tip is aligned to the pin hole to avoid damage of the removal tool tip.



PRODUCT SPECIFICATION:

Operation temperature range	-10C ~ +50C
Water Resistant	3ATM
Product operation standard	GB/T 6044
Production level	Top Grade

5

Frequency – water resistance is 3ATM

3ATM – Water resistant to 30 meters (100 feet). Will withstand splashes of water or rain but should not be worn while swimming or diving

Caution:

Usage of exceeding the operation temperature range may result in damaging the watch movement.

6

Any issues? Reach out!

✉ info@BoltWatches.com

🖱 www.BoltWatches.com/Pages/Support-Center

Bolt Smartwatch

Model: Frequency