



# INSTRUCTION MANUAL



## TABLE OF CONTENT

UltraDash Z3 .....	01
Precautions .....	02
Product Specs .....	03
Package Contents .....	04
Product Features .....	04
Camera Parts & Controls .....	05
In-Vehicle Installation .....	08
On Screen Notifications .....	15
Video Mode .....	19
Video Menu .....	20
Photo Mode .....	22
Photo Menu .....	23
Playback Mode .....	24
Setup Menu .....	29
USB Storage .....	30
Firmware Update Instruction .....	31
iQ Player .....	33
Warranty .....	33
Trouble Shooting .....	35

Congratulations on the purchase of your new UltraDash Z3 camera! We'd like to thank you for your purchase. We strive to bring you the highest quality products, allowing you to capture every memory. We know you'll love using your UltraDash!

The following instructions are written for optimized use of your UltraDash Z3 camera.

Each of the default settings have been designed to achieve the highest quality video while maintaining peace of mind when the camera is on.

It is not recommended you adjust the default settings.

## EASY TO USE

With new technology readily available, the creators of Cansonic have developed an easy to use camera for everyday use. The UltraDash Z3 allows its user to record files in 1 or 3 minute lengths. These files are easy to download to your home desktop or personal laptop. In most instances, the video files are easily played on your mobile device.

While most cameras traditionally use the entire capacity of the Micro SD card until it is removed, UltraDash automatically deletes the oldest file to create space for the new video.

**UltraDash Z3 offers three modes:**

1. **Video Mode:** Video mode will set to default when the camera is active.
2. **Photo Mode:** The UltraDash Z3 setting takes still photographs.
3. **Playback Mode:** Users can view all previously recorded videos and photos taken.

**FEATURES:**

**Automatic Start/Stop Technology:**

Maintain full focus on the road! The vehicles ignition will let the camera turn on while connected to your vehicles 12V outlet or cigarette lighter socket. When the vehicle is turned off, the camera will automatically shut down.

The UltraDash Z3 lets users adjust camera settings to get the perfect shot. For a great photo every time, here are a few tips from the designers:

1. Reduce the amount of sky in the picture. By adjusting the camera towards the road, the automatic exposure compensation will be focused on the road and not the light from the sky.
2. Position the camera in the center of the dash. If you place the camera behind the rearview mirror, you will avoid all distractions from the road.
3. Remove any objects that will obstruct your shot such as the protective lens cover. Clear vision will allow you to record everything in one shot.

## ADDITIONAL TIPS

Full optimization of memory card:

1. Before removal of the memory card from the UltraDash Z3, be sure to turn off the camera. Leaving the camera on while removing its memory card may lead to eased or corrupt files.
2. Format memory card to UltraDash Z3 settings by clicking MENU button twice, then choosing the format option. You will now be able to fully use all the memory power your Micro SD card is set to hold.
3. By reformatting your memory card every 2-3 weeks, your memory card will continue to be fully utilized. Only do this AFTER you've downloaded any files from the card to your computer, as formatting the card will remove all content.



## PRECAUTIONS

Please read the following instructions carefully. Proper Use of the UltraDash Z3 is necessary in order to avoid operational problems that may occur.

### WARNING:

DO NOT expose UltraDash Z3 to moisture under any circumstance. The camera is NOT WATERPROOF and will become defective and may put the user at risk of electric shock or fire exposure. DO NOT use UltraDash Z3 for any illegal purpose or to infringe on another individual's rights. When audio is being recorded, we recommend you allow any and all persons near the UltraDash Z3 know that they are being recorded. You can disable the microphone on the camera.

### CAUTION:

Do not perform any activities or services with the device unless you are qualified to control the object. Misuse of the UltraDash Z3 may result in electric shock or fire exposure. AVOID ANY uses of the camera that are not listed in the manual.

If your UltraDash Z3 needs service repairs, please visit a qualified technician to perform the necessary repairs:

UltraDash Z3 has had exposure to water (rain, all forms of water, ETC.)

UltraDash Z3 operating system is not functioning properly

UltraDash Z3 does not turn on properly

### Liquid Crystal Display (LCD)

UltraDash Z3 is equipped with an LCD screen for easy viewing. The screen has a multi-layer complex component that contains nearly 600,000 pixels. The pixels the screen projects may fail as a result of: Defective Problems or Prolonged Exposure to the sun. Product life may also be a cause for screen failure. One pixel is equivalent to 0.0001% of total screen exposure. One-pixel failure per year during the operational life of the UltraDash Z3 is standard and should not be cause for concern.

### Proper Use of UltraDash Z3

The following instructions are listed for exclusive use of the UltraDash Z3.

Please read all instructions to prolong camera use and effectiveness.

- Remove packaging and ensure the windshield is clear of dirt and debris before you install your dash camera mount.

Avoid any and all distractions in regards to technology, IT'S THE LAW.

- Any obstruction of drivers' view of the road may result in fines. Ensure the UltraDash Z3 is placed clear of your view of the road, as well as out of the way of airbags in the event of an accident.
- Disconnect the UltraDash Z3 adaptor when the vehicle is not in use. By doing so, you will avoid camera damage as well as hazards such as fires and electrocution.
- Avoid viewing the camera playback feature while operating a vehicle. It is illegal and may result in a fine or even death.

Avoid adjusting the camera settings while driving. It is dangerous and illegal.

### OBEY THE LAW!

### Cleaning

Proper maintenance of the UltraDash Z3 is essential to allow for full optimization of the camera.

Maintenance suggestions are:

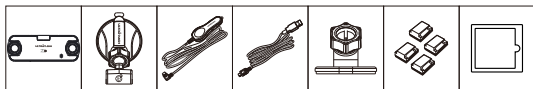
- Clean the device with a soft dry cloth. For tough dirt, please use a small quantity of water and a neutral detergent. Clean with a soft cloth.
- Avoid contact with the UltraDash Z3 lens as damage may be caused.
- When necessary, clean the lens carefully by using lens cleaning fluid and a soft cloth.

## PRODUCT SPECS

Model Number / Name	UltraDash Z3
Power Requirements	5V / 1.5A; 12–24V DC
Power Supply (Car power cable)	Input: 12–24V DC Output: 5V DC Fuse Type: 32mm/2A
Power Input (Car power cable)	Built-in super capacitor
Sensor Resolution	Dual Sony Exmor, 2M Pixel
Wide-Angle Lens Type/Angle/Aperture	6G / 140° / F1.8
Telephoto Lens Type/ Distance/Aperture	6G / 164 ft / F2.0 (Only for Standard Edition)
Recording Resolution	Dual 1920 x 1080 @ 30 fps (Default)
Screen Size	2.7"
Screen Resolution	960 (W) X 240 (H) pixels x RGB
Screen Ratio	16:9
Card Reader	Micro SD, SDHC, up to 256GB
SD Card (Recommended Type)	32–256GB SDHC, U3, for best results use a recognized brand
SD Card Recorded File Capacity (Based on default settings)	8 GB Micro SD = 40 mins of recording 16 GB Micro SD = 80 mins of recording 32 GB Micro SD = 160 mins of recording 64 GB Micro SD = 320 mins of recording 128 GB Micro SD = 640 mins of recording 256 GB Micro SD = 1280 mins of recording
Recording Format	MOV
Unit Dimensions	5.7 x 2 x 0.6 inches (14.5 x 5.1 x 1.5 cm)
Unit Weight	4.9 oz (138.9 g)

## PACKAGE CONTENTS

Please check the contents of your UltraDash product.



UltraDash Z3

Suction Mount

Car Power Cable

USB Cable

3M Adhesive Mount

Cable Clips

Static Slide Film

\* Product appearance may differ slightly to that shown above.

## PRODUCT FEATURES

### – 2.7” LCD Color Screen

We developed a screen that perfectly fits your camera, without any loss of resolution. This design allows you to use the playback feature, instantly letting you view the shot you just captured.

### – Quick Release Magnetic Mount

We know how difficult it is to maintain focus with movement. We developed a mount that is uniquely designed for easy attaching and removing so you can focus on capturing the perfect shot.

### – G sensor/File Protection

The UltraDash Z3's built-in sensor detects an outside force, forcing the camera to save what has been just shot. The file can also be manually saved. By pressing our easy to access button around the screen, you are able to save an individual file.

### – Automatic Start/Stop Tech

UltraDash Z3 comes with built-in sensors that automatically turn the camera on and off with the vehicle.

### – Built-In Microphone & Speaker

A built-in microphone and speaker come standard. The feature also works with the camera's playback feature.

### – GPS Data

UltraDash Z3 is able to record your location and speed while filming with the magnetic GPS mount.

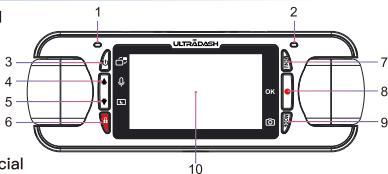
### – Parking Mode (Optional)

The UltraDash Z3 has a sleep mode, but a unique feature enables the camera to automatically record 30 seconds of video if there is any physical movement of the vehicle. This feature requires hardwiring to permanent power.

(sold separately, please see Cansonic website for more detail).

## CAMERA PARTS & CONTROL

### Standard



### Commercial



#### 1. Red Status LED Indicator

Constant: Power on.  
Flashing: Recording.

#### 2. Blue Status LED Indicator

Constant: Charging.

#### 3. Power/Screen Select Button

##### Power

Press and hold the button for 2 seconds to turn the camera on/off.

##### Screen Select

Press to Switch the main camera to display on PIP screen.

#### 4. Up/Mute Button

##### Up

Navigate up within menus or go to the previous file in playback mode.

##### Mute

Turn on or off the audio recording function while in video mode.

#### 5. Down/Screen Off Button

##### Down

Navigate down within menus or go to the next file in playback mode.

##### Screen Off

Turn on/off the LCD screen.

#### 6. File Protect Button

Simply press the button and to protect the current video file from overwriting.

#### Note:

- If the button is pressed within the first third of a video clip, the previous clip will also be protected.

- If the button is pressed within the final third of a video clip, the next clip will also be protected (if recording continues).

## 7. Menu Button

Press this button to open the menu of the current mode. Press this button twice to enter the general setting menu.

## 8. Record/OK Button

### Record

In Video mode, press to start or stop recording.

In Photo mode, press to take a photo.

### OK

The confirm button used to select options in menus.

## 9. Mode/Screen Shot Button

### Mode

This button allows you to navigate between video, photo and playback modes.

### Screen Shot

While you are recording in video mode, press down on the button and you will be able to take a screenshot of the current frame.

## 10. Screen

UltraDash Z3 is equipped with a standard 2.7" LCD color screen to let you view.

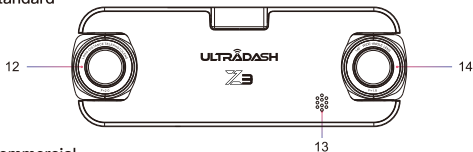
## 11. IR LED

IR LED Lights will automatically turn on/off when the light level reduces/increases to certain level, there is no need to setup.

### Note:

- Please make sure there is no object blocking the IR LED Lights.

## Standard



## Commercial



## 12. Left Lens

### Standard

Left lens is a telephoto lens designed to capture all the details for you, or you can record the rear traffic by point this lens backward.

## Commercial

Left lens (Front Lens) is a wide-angle lens designed to record everything through the front windshield. The color of the lens ring is silver.

### 13. Speaker

System sound and recorded footage sound.

### 14. Right Lens

#### Standard

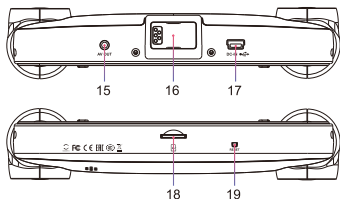
Right lens is a wide-angle lens designed to record everything through the front windshield.

#### Commercial

Right lens (Cabin Lens) is the other wide-angle lens which is designed for a professional driver to record driver-passenger interaction. The light will turn black and white when the light level reduces to certain level. The color of the lens ring is gold.

#### Note:

- The video files from the Cabin Lens will be a little red and purple during day time. It is normal because the lens is without IR filter to make the lens work during night time.



### 15. AV Outlet

This feature is available to connect your Cansonic UltraDuo Z3 to your television by using the AV Cable. (sold separately)

### 16. Connector Port

Attach the magnetic connector to the connector port.

### 17. DC-IN/Data transfer Port

By connecting the UltraDash Z3 with the supplied car power cable you are able to charge the camera. This will also be utilized to let you connect the USB cord to your PC.

You can either connect the car power cable with the device or magnetic connector.

### 18. Micro SD Card Slot

Insert your micro SD card here. Push your memory card into the slot until you hear a click.

### 19. Reset Button

On the rare occasions the camera has a problem, use the reset button to shut down the camera. Simply press the reset until the camera turns off and press the power button to turn on.

## IN-VEHICLE INSTALLATION

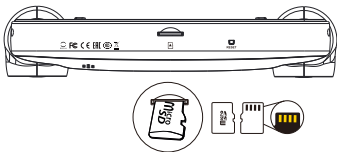
For the first installation, follow the instructions below:

### 1. INSERT YOUR MICRO SD CARD INTO THE UltraDash Z3

The UltraDash Z3 is designed to allow a standard Micro SD card to record your footage. Before installing, make sure the gold end of the card is facing down of the LCD screen. Once it's aligned with the slot, push the card in and listen for the **CLICK** that will confirm it is secure.

#### TIP:

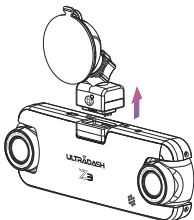
- If you cannot hear the **CLICK**, take a small coin by the edge and push on the outside end of the card until the sound is made.
- Remember: **DO NOT REMOVE OR INSERT THE MEMORY CARD WHILE THE ULTRADASH Z3 IS TURNED ON.**



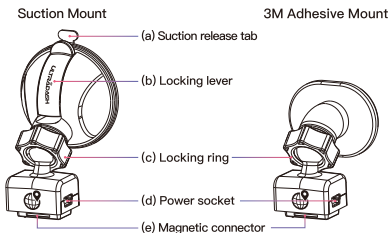
### 2. CONNECT THE UltraDash Z3 TO THE MAGNETIC MOUNT

Attach the UltraDash Z3 onto **(e) the magnetic connector** on the mount.

Make sure you align the camera within the connector port for proper installation.



## 2.2 REPLACE THE SUCTION MOUNT WITH THE 3M ADHESIVE MOUNT (OPTIONAL):

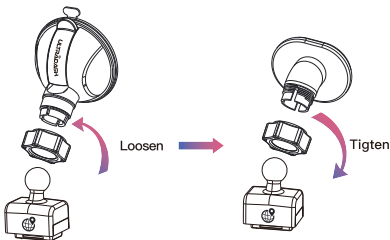


There are two types of mounts included in the package. One is a suction-cup and the other is a 3M-adhesive type. The suction mount makes it easier to attach and detach from the windshield while the adhesive mount provides more solid support for the camera.

The magnetic connector is already installed on the suction mount. If you prefer using the 3M adhesive mount, please follow the guide below:

### How to use the 3M Adhesive Mount:

- i. Loosen the **(c) locking ring** on the suction mount and pull the **(e) magnetic connector** out.
- ii. Next, loosen the **(c) locking ring** from the 3M adhesive mount, and plug the **(e) magnetic connector** into the 3M adhesive mount.
- iii. Clean the installation area on the windshield and peel off the plastic covering. Adhere it to the windshield.





### 3. STATIC SIDE FILM INSTRUCTION

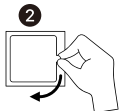
---



#### 1. Position film location and clean windshield

Before applying, clean windshield location, remove any dust, oil and use any cloth to give one last polish for best performance.

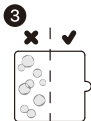
---



#### 2. Remove the protective layer

Before sticking, pull out the actual film protector. Pull out and remove the protective layer on one side.

---



#### 3. Attach static side film to the windshield

Adhere the static side to the windshield, press out and remove excess bubbles using a squeegee or plastic card. Make sure to press it fully to adhere on the windshield.

---



#### 4. Install suction cups or 3M™ adhesive mount

Mount suction cup or 3M™ adhesive mount within the surface of the film and avoid the area that spans between windshield and film.

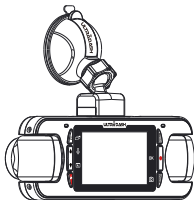
---

**Note:** Do not reuse windshield sticker applicator film repeatedly. This will reduce the adhesion performance and cause the static film to fall off.

#### 4. ATTACH THE MOUNT TO THE WINDSHIELD

Remove the protective plastic film and select a location on the windshield where it won't distract you. Then, put the suction mount in place.

Release the **(b) locking lever** from the mount by pulling down on it. Hold the suction mount in place and press against the window. While holding it in place, pull the **(b) release lever** back to lock the mount



#### TIPS:

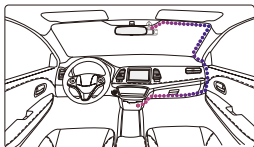
- When selecting a location for the suction mount, make sure it's on a glass surface that is smooth and free of paint.
- Before mounting, clean the area with a dry/clean cloth and add a small amount of moisture to the windshield. This allows a stronger bond to form between the glass and the suction mount.
- Remember to place the mount within the area of the vehicle's windshield wipers.
- The **(a) suction release tab** allows you to release the cup from the glass to readjust your camera placement.

#### 5. ADJUST THE ANGLE

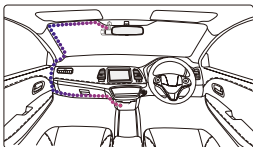
Loosen the **(c) locking ring** and adjust the camera to the angle you want. When you find the perfect angle, remember to tighten the **(c) locking ring** again.

#### 6. CONNECTING TO CAR POWER OUTLET

Connect the power cable that is in the package to your vehicle's 12V outlet. The provided cable clips can help you keep the power cable neat.

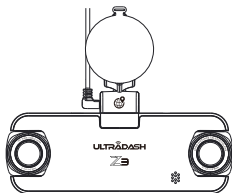


 12-24V DC Left-hand Drive



 12-24V DC Right-hand Drive

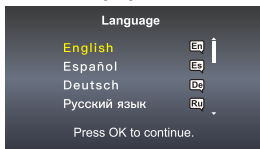
Plug the power cable into the **(d) power socket** of the mount or camera. This will allow the camera to begin charging.



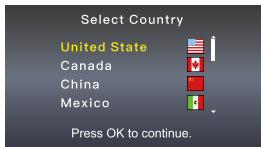
## 7. THE FIRST-TIME SETUP

When connecting the power, the UltraDash Z3 will turn on and display the first-time setup guide below.

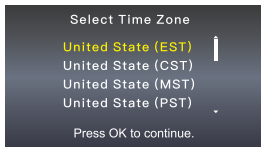
Select the Language



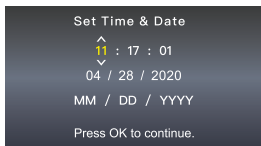
Select the Country and Time Zone



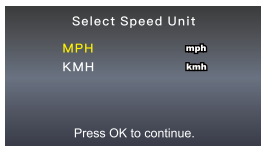
Select Time Zone



Set the Time and Date



Select the Speed Unit



**TIP:**

You can reset the settings either by operating inside of the SETUP MENU, or by restoring defaults.

From now on, the UltraDash Z3 will automatically turn on and start recording once power has been made available from the 12V outlet. Just start the vehicle and start driving!

- If there is no 12V outlet or cigarette lighter for your vehicle, use the included USB power cord.
- DO NOT wire the UltraDash Z3 directly to the car cigarette outlet or any 12V outlet. Doing so will result in permanent damage to the camera.
- The UltraDash Z3 has a hardwire kit available from the Cansonic official website that will directly connect to your vehicle's fuse box. This will allow you to have your 12V outlet available for other use.

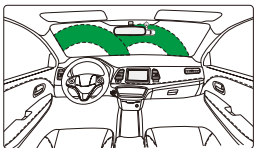
Please read carefully and follow the instructions below to help you operate UltraDash Z3 safely.

**WARNING:**

ALWAYS pay attention to the road ahead of you. Driving with distractions on the road may result in penalties, accidents, or even death. **PLEASE DRIVE CAREFULLY.**

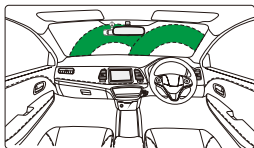
Always place the mount in a location that will not obstruct the driver's view of the road. We recommend you place the mount behind the rearview mirror on the passenger side, within the windshield wiping area.

**CAM clearly needs to view through**



**Left-hand Drive**

**CAM clearly needs to view through**



**Right-hand Drive**

**DO NOT** place the camera in front of the driver's side.

**DO NOT** place the mount within the airbag deployment area or near any mirrors.

**DO NOT** operate the UltraDash Z3 while driving. Remember, the camera will automatically record when the vehicle engine has started.

**PLEASE** place the camera where the power cable is easily concealed and will not distract the driver. Avoid areas such as the steering wheel, pedals, or gear shifter.

**PLEASE** remember to clean the area where the mount's suction cup will be placed.

**PLEASE** adjust your camera settings before you begin driving.

## ON SCREEN NOTIFICATIONS

The following information will help you better understand the On Screen Notifications when corresponding alert is detected.

- **First Time Use SD Card Format:** When the SD card is inserted into the device for the first time, the device will ask you to format the card. Press **OK** button to format and **MENU** button to cancel.

Note: Please save the important file before formatting the card.

OPTIONS: Format (Recommended)/Cancel



- **30 Days SD Card Reformat:** When the SD card has been formatted for 30 days, the device will ask you to reformat the card every 30 days to keep the storage of SD card is working correctly. Press **OK** button to format and **MENU** button to cancel.

Note: Please save the important file before formatting the card.

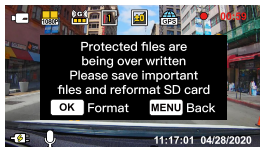
OPTIONS: Format (Recommended)/Cancel



- **Protected Files Over Written:** When the protected space of SD card is full, the device will ask you to reformat the card, otherwise the first protected file will be overwritten when the protected space is full. Press **OK** button to format and **MENU** button to cancel.

Note: Please save the important file before formatting the card.

OPTIONS: Format (Recommended)/Cancel

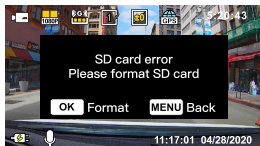


- **SD Card Error:** When there is any writing/reading issue with the SD card, the device will ask you to reformat the card to keep the SD card working correctly. Press **OK** button to format and **MENU** button to cancel.

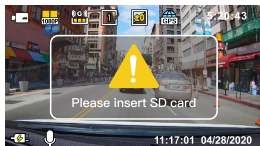
Note: Please save the important file before formatting the card.

Note: If the notification keeps showing up, please check if the SD card is still working. The life of SD cards is limited, it could be from 3 months to a year or more depends on usage. Check with your SD card manufacture for warranty information.

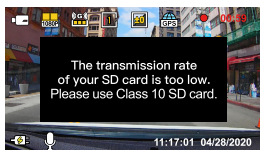
OPTIONS: Format (Recommended)/Cancel



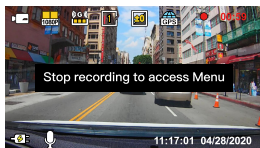
- **Insert SD card:** This is a notification to remind you to insert the SD card.



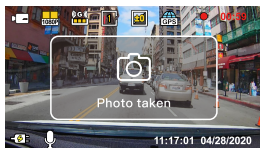
- **Low Transmission Rate:** When the SD card transmission rate is lower than Class 10, the notification will show up. We recommend using a Class 10 micro SD recognized brand card for best result.



- **Access Menu During Recording:** When pressing MENU button during recording, you may need to press OK button to stop recording first then you can press MENU button to access Menu.



- **Take a Snapshot:** Press MODE button during recording to take a snapshot. The image will be saved in Photo folder.





- **Update Firmware:** Press **OK** button to start updating the firmware and **MENU** button to cancel.

Note: Please save the important file before formatting the card.

Note: For more information about firmware update, please read page 30.

OPTIONS: Update (Recommended)/Cancel



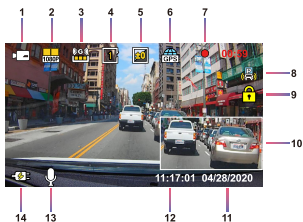
- **Updating Firmware:** Do not disconnect power or press any button during this period, it may cause update failure.

Note: For more information about firmware update, please read the page 30.



## VIDEO MODE

The following information will help you better understand the icons in **VIDEO MODE** and their relative functions. Some icons show up only when corresponding functions are activated.

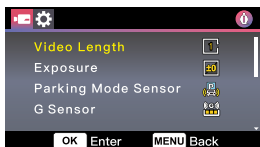


- 1. Mode:** Indicates the UltraDash Z3 is in video mode.
- 2. Resolution:** Displays the current resolution.
- 3. G Sensor:** The current sensitivity level of G-Sensor.
- 4. Video Length:** The duration of each video clip.
- 5. Exposure:** Indicates the current exposure level settings.
- 6. GPS:** If this icon flashes, it indicates UltraDash Z3 is locating GPS signal. When the GPS signal is found, the icon will stop flashing and remain stable on the screen.
- 7. Recording Duration:** This will indicate the length of the current recording.
- 8. Parking Mode Sensor:** Indicates the current sensitivity level for parking mode function. (Optional)
- 9. File Protection:** Indicates the current video clip is protected.
- 10. PIP:** UltraDuo Z3 will display the image from both cameras at the same time. Use screen select hot key to choose the main camera to display on PIP screen.
- 11. Date:** Displays current date.
- 12. Time:** Displays current time.
- 13. Microphone:** When the audio recording function is off, there will be a red line across the icon.
- 14. Power Status:** Indicates if the camera is charging or not.

UltraDash Z3's default settings have been set for you to use the camera without needing to change the settings. If you need to make adjustments to the settings, the following instructions will help you.

## VIDEO MENU

Access the **VIDEO MENU** by pressing the **MENU** button while in **VIDEO MODE**.



Use the **UP** and **DOWN** buttons to select setting options and press the **OK** button to enter the sub-menu.

Once you access the sub-menu, highlight the desired setting and press the **OK** button to confirm your selection and to return to the **VIDEO MENU**.

Press the **MENU** button twice to return to video mode.

### TIP:

- You are not able to access the UltraDash Z3 menu while the camera is recording.
- **Video Length:** Set the length for each individual video clip. The video recorded by UltraDash Z3 will be split and stored as individual video clips. The loop recording function will automatically overwrite the oldest and non-protected video clip when the memory card is full.  
OPTIONS: 1 Minute (default)/3 Minutes
- **Exposure:** Adjust exposure levels settings.  
OPTIONS: +2/+1 / 0 (default)/-1/-2
- **Parking Mode Sensor (Optional):** If the parking mode sensor is turned on, Z3 will enter sleep mode when the vehicle is turned off or when Z3 loses its power supply. In the sleep mode, if Z3 detects any external forces, it will automatically turn on and take a 30 second video and turn off afterward. The videos taken in this situation will all be protected. You can adjust the sensitivity for the parking mode force sensor here. The parking mode feature requires the hardwiring to permanent power. (Hardwire kit is sold separately)  
OPTIONS: On/Off (default)

- **G Sensor:** G sensor is the sensor that can detect forces. When it senses any forces, it will protect the current file automatically. Adjust the sensitivity of G sensor here.  
OPTIONS: High/Medium (default)/Low/Off
- **GPS:** Turn the GPS function ON or OFF.  
OPTIONS: On (default)/Off
- **Speed Unit:** Adjust the unit for speed data.  
OPTIONS: MPH (default)/KMH
- **Screen Saver:** UltraDash Z3 has a function to let the screen shut down after a period of inactivity. Press any button to re-activate the display.  
OPTIONS: 30 Seconds/2 Minutes/Off (default)
- **UltraDash Stamp:** Turn the UltraDash logo stamp ON or OFF on the recorded files.  
OPTIONS: On (default)/Off
- **Time & Date Stamp:** Turn ON or OFF the date stamp mark on the recorded files.  
OPTIONS: On (default)/Off
- **Information Stamp:** Turn the Information stamp including the acceleration, speed data on the recorded files ON or OFF.  
OPTIONS: On (default)/Off
- **License Plate Stamp:** Input your license plate number to put your license plate stamp on the recorded files.

**NOTE:** When you are in the **SETUP MENU** -> **Restore Defaults**, you will be able to restore all the settings to UltraDash Z3's default settings.

## PHOTO MODE

While in **VIDEO MODE**, press down on the **MODE** button to enter **PHOTO MODE**.

In **PHOTO MODE**, you are able to take stationary photos.

The following instructions will explain the icons in **PHOTO MODE**.

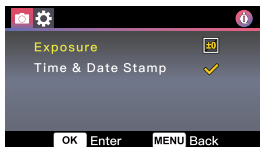
Some icons show up only when corresponding functions are activated.



1. **Mode:** Indicates when the UltraDash Z3 is in photo mode.
2. **Exposure:** Indicates the current exposure level settings.
3. **Memory Capacity:** Remaining shot count.
4. **Date:** Displays current date.
5. **Time:** Displays current time.
6. **Charging Indicator:** Indicates if the camera is charging or not.

## PHOTO MENU

Access the **PHOTO MENU** by pressing the **MENU** button while in **PHOTO MODE**.



Use the **UP** and **DOWN** buttons to select setting options and press the **OK** button to enter the sub-menu.

Press down on the **MENU** button twice to return to **PHOTO MODE**.

- **Exposure:** Adjust exposure levels settings.  
OPTIONS: +2/+1/ 0(default)/-1/-2
- **Time & Date Stamp:** Turn ON or OFF the date stamp mark on the photos.  
OPTIONS: On (default)/Off

**NOTE:** When you are in the **SETUP** -> **System MENU**, you will be able to restore all the settings to the UltraDash Z3's default settings.

## PLAYBACK MODE

Use **MODE** button to access **PLAYBACK MODE**.

In **PLAYBACK MODE**, you are able to review the videos and photos you have stored.

### DIRECTORIES

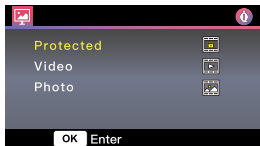
Press the **UP** or **DOWN** buttons to navigate through the menu.

**Protected:** The directory for all protected videos.

**Video:** The directory for all unprotected videos.

Note: If the video file is protected under playback mode, the file will remain in video directory.

**Photo:** The directory for all photos.



### VIDEO FILES



Use the **UP** and **DOWN** buttons to select the video file and press the **OK** button to play.

**Video file name:** The format of video file name is **yyyymmdd\_hhmmss\_xxx\_[L/R]**.

**yyyy:** Years. **mm:** Months. **dd:** Days.

**hh:** Hours. **mm:** Minutes. **ss:** Seconds.

**xxx:** Sequence of file.

**L/R:** Left or Right lens.

For example, 20200428\_111701\_001\_L mean this file was taken at April 28, 2020, 11:17:01, "001" is the sequence of file number 1, "L" means left lens.





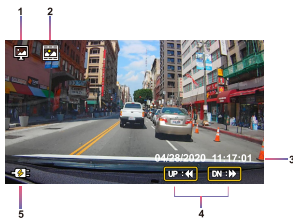
6. **Charging Indicator:** Indicates if the camera is charging or not.

7. **Protected File:** Indicates the selected file is protected.

## PHOTO FILES



Use the **UP** and **DOWN** buttons to select the video file and press the **OK** button to play.



1. **Mode:** Indicates when the UltraDash Z3 is in **PLAYBACK MODE**.

2. **File Type:** Indicates the file type is photo.

3. **Date & Time:** Indicates the date and time of the recorded file.

4. **Playback Controls:** Use the UltraDash Z3 buttons as instructed below.



**UP:** Previous file.

**DOWN:** Next file.

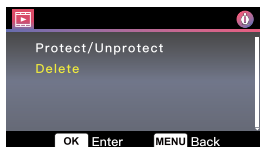
5. **Charging Indicator:** Indicates if the camera is charging or not.

## DELETING FILES

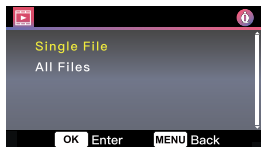
Highlight the **DELETE** option and press the **OK** button.

**TIP: PROTECTED FILES CANNOT BE DELETED.**

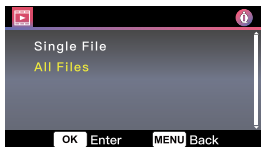
You will have the following options:



Once selected, follow the on screen instructions to delete the current file.



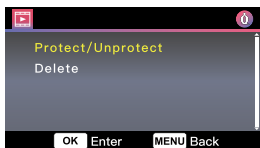
Once selected, follow the on screen instructions to delete all files.



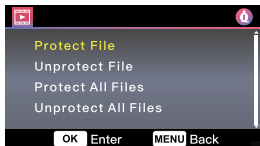
## PROTECTING/UNPROTECTING FILES

Highlight the **PROTECT/UNPROTECT** option and press the **OK** button.

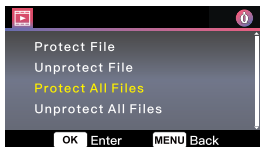
You will have the following options:



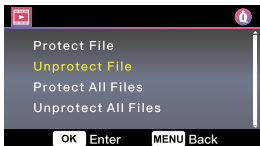
Select **Protect File**, follow the on-screen instructions to protect the current file.



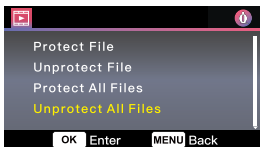
To **Protect All Files**, select the option then follow the on-screen instructions to protect all files in the current folder.



Select **Unprotect File**, follow the on-screen instructions to unprotect the current file.

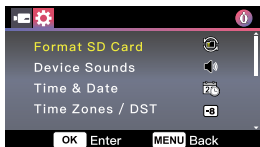


Select **Unprotect All Files**, follow the on-screen instructions to unprotect all files in the current folder.



## SETUP MENU

Access the **SETUP MENU** by pressing the **MENU** button twice.



Use the **UP** and **DOWN** buttons to select setting options and press the **OK** button to enter the sub-menu.

Once you access the sub-menu, highlight the desired setting and press the **OK** button to confirm your selection and to return to the **SETUP MENU**.

Press the **MENU** button to return to the current mode.

Note: UltraDash Z3 default settings have been selected for great image quality and ease of operation. Under most circumstances, you don't need to change the settings.

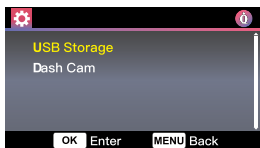
Note: The setup menu cannot be accessed while the camera is recording.

- **Format SD Card:** Format the memory card. Formatting will remove ALL the files in the card.  
OPTIONS: Yes/No
- **Device Sounds:** Adjust the button beep sound, announcements, and voice recording.  
OPTIONS:  
Beep: On (default)/Off  
Announcements: On/ Off (default)  
Audio Rec: On (default)/Off
- **Time & Date:** Adjust the TIME and DATE as required by using use the UP and DOWN buttons to set the value. Press the OK button to save the setting and press the MENU button to return to the SETUP MENU.
- **Time Zone/DST:** Select the time zone setting.  
OPTIONS: -12/-11/-10/-9/-8/-7/-6/-5/-4/-3.5/-3/-2.5/-2/-1/GMT/+1/+2/+3/+4/+5/+6/+7/+8/+9/+10/+11/+12
- **Language:** Select a preferred language.  
OPTIONS: English (default)/Español/Deutsch/Русский язык/繁體中文/简体中文

- **Country:** Select a country and time zone setting.  
 OPTIONS: United States/Canada/China/Mexico/Korea/Japan/Taiwan/Russia/Spain/Norway/Finland/Sweden/Germany/France/Italy/Netherlands/Belgium/Denmark/Poland/United Kingdom/Other
- **Restore Defaults:** Reset all the settings to UltraDash Z3 factory default.
- **System Info:** Displays the firmware version, card info, and GPS satellite signal.  
 OPTIONS:  
 Firmware Version: Displays the firmware version.  
 Card Info: Displays the memory card information.  
 Satellite Signal: The count of how many satellite signals Z3 is receiving.

## USB STORAGE (Windows & Mac)

When you use the provided USB cable to connect UltraDash Z3 to your computer, the LCD screen will show two available options.



Use the **UP** and **DOWN** buttons to select the necessary function, and press the **OK** button to continue.

### USB STORAGE

When you have connected the UltraDash Z3 to the computer, the camera will operate as a card reader. Your computer will have a pop up of a new drive for you to browse all the video and picture files.

**Note:** The UltraDash Z3 is a “Read Only” device. If you want to copy/delete/edit the files, remove the Micro SD Card and use another card reader to connect your computer.

**REMEMBER:** Turn your UltraDash Z3 off before you disconnect it from your computer.

### DASH CAM

When you choose this option, UltraDash Z3 will turn on and work normally while the device is being charged.

**Note:** Remember to always turn off the UltraDash Z3 before disconnecting it from your computer.

## FIRMWARE UPDATE INSTRUCTION

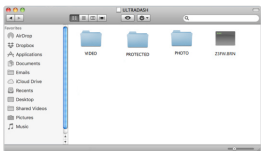
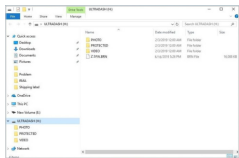
Team UltraDash will keep update the firmware to improve the better user experience for our valued customers. Once you register your product on Cansonic website, we will send you information about our new firmware update. Or you can visit the link below once for a while to check if there is any new firmware update:

<https://cansonic.com/pages/download>

Please follow the step by step instruction below:

1. Make sure your SD card is formatted and copy the **Z3FW.BRN** into the root directory of the SD card.

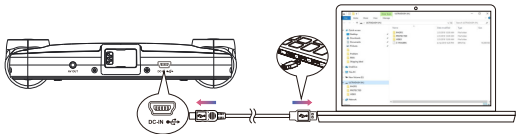
Notice: Make sure the file name is Z3FW.BRN If you see Z3FW(1).BRN or so on, please rename the file name to **Z3FW.BRN**



2. Insert the SD card into the dashcam.



3. Connect the UltraDash Z3 to your PC or Mac with the USB cable, and make sure the dashcam is charging.



4. When turning on the dashcam, select Dash Cam and there will be a popup message as picture below. Please press **OK** button to start the update.



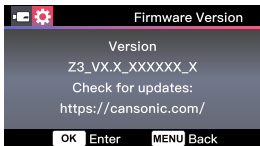
5. When the update starts, there will be a popup message as picture below.  
**DO NOT TURN OFF OR PRESS ANY BUTTON DURING THIS PERIOD, IT MAY CAUSE THE UPDATE FAILURE.**



6. It may take a while for updating. Once it finishes the update, the UltraDash Z3 will turn off the device automatically.



7. Turn on the dash cam and reset the first time settings. Press **MENU** button twice to entry **SETUP MENU** and select the **System Info** and select **Firmware Version** to check if the **Version** is the latest one [Z3\_VX.X\_XXXXXX\_X] as shown on website, then it is successfully updated.



## iQ PLAYER(Windows & Mac)



iQ Player is completely free set of video playback software. Which can be used to review data and videos of the latest UltraDash dash cameras. With its mapping function, user is able to view the route, speed, latitude, longitude, direction of the drive and information of the G sensor data at the time. In addition, users can easily edit the length of video for quick upload to share with friends, relatives and insurance companies.

**Download Link:** <https://cansonic.com/pages/iq-player>

## WARRANTY

Take a minute to register your new UltraDash product at <https://cansonic.com/pages/registration> and save a copy of your receipt or bill of sales as proof of purchase.

You will enjoy our manufacture warranty coverage, repair / replacement service and customer support.

### ONE (1) YEAR LIMITED WARRANTY

Cansonic warrants UltraDash branded products against defects in materials and workmanship when used normally in accordance with our official guidelines <https://cansonic.com/pages/warranty> for a period of ONE (1) YEAR from the date of original retail purchase.





**ULTRADASH™**

## **ONE YEAR LIMITED WARRANTY**

To obtain repairs or replacement within the terms of this warranty, please fill the information and present your receipt or bill of sale as proof.

Serial Number: \_\_\_\_\_ Model Number: \_\_\_\_\_

Purchase Date: \_\_\_\_\_ Name: \_\_\_\_\_

Email: \_\_\_\_\_ Telephone: \_\_\_\_\_

Address: \_\_\_\_\_  
\_\_\_\_\_

The Company hereby warrants to the original retail purchaser of this product that should this product or any part thereof, under normal use and conditions, be proven defective in material or workmanship within one year parts and labor from the date of original purchase, such defect(s) will be repaired or replaced with reconditioned product (at the Company's option) for parts and repair labor. This limited warranty is the purchaser's exclusive remedy for any such defect(s). This warranty does not apply to any product of part thereof which, in the opinion of the Company, has suffered or been damaged through alteration, improper installation, mishandling, misuse, neglect, accident, or by removal or defacement of the factory serial number/bar code label(s). The opinion of the Company with respect to this matter shall be final.

**THE EXTENT OF THE COMPANY'S LIABILITY UNDER THIS WARRANTY IS LIMITED TO THE REPAIR OR REPLACEMENT PRO VIDEO ABOVE AND, IN NO EVENT, SHALL THE COMPANY'S LIABILITY EXCEED THE PURCHASE PRICE PAID BY PURCHASER FOR THE PRODUCT.**

## TROUBLE SHOOTING

Blurred Image (Video)	The UltraDash Z3 comes with a protective lens cover for the cameras lens, be sure to remove it. Wipe the lens with a soft cloth until any debris/stains are removed. Clean your vehicles windshield where the camera is placed.
Unable to insert Micro SD Memory Card	Make sure the metal portion of the memory card faces the screen side. Once inserted, push the card until a CLICK sound is heard.
Memory card does not release from UltraDash Z3	UltraDash Z3 releases the Micro SD Memory Card by pressing the memory card forward. By applying the pressure on the memory card, a small click sound will be made. If you are unable to remove the memory card, use the edge of a small coin to push forward until the click sound is made.
UltraDash Z3 video files can not be played	The UltraDash Z3 video files are recorded in .MOV format. These files may not be played on your PC if you do not have a suitable video player installed.
Video files jump when they are being played	The memory card that the UltraDash Z3 recommends for best quality is the UHS type 3 Micro SD Card. If your PC does not recognize the video files, try another PC to view the recorded video. Copy the video file on to the computer and allow for the PC video player rather than the UltraDash Z3 Playback feature.
The photos come out blurry	Be sure to hold the camera still while you take your photo. Reminder: The photo is not done unless you have heard the shutter click. Also make sure the protective lens covers are removed and the lenses are clean.
The total video recording time is only a few minutes long	You may have a small amount of available space left for your memory card. Back up all the files you need from the memory card. Only AFTER you back up all the files you need, format the memory card with UltraDash Z3.
I cannot save my video files to my computer through the USB storage feature	The functions have been optimized to work properly with both PC and Mac computers. Please reboot your computers. Make sure UltraDash Z3 is connected properly.
The suction cup does not attach to the surface	Be sure the protective film on the suction cup has been removed. Before you place it, make sure the surface is clean and smooth. Wipe down the surface and add a small amount of moisture to the suction cup to allow for a stronger bond. Do not apply on a non-smooth surface or an area with paint.
UltraDash Z3 shuts down on its own	Auto power off function will turn off Z3 automatically after it loses its power supply. Make sure Z3 is connected properly to the car power cable.
UltraDash Z3 does not charge in my car	If your car power cable is not working properly with your UltraDash Z3, check your car's power fuses. Also check your power cord and replace it if there is an issue.

Micro SD Card is not letting me view my files	Try some different card readers and computers to see if any of them can view the files. If none of them work, the files are probably damaged. Use Z3 to format the memory card. (WARNING: formatting the memory card will remove all the files saved), We recommend the branded memory cards with UHS type 3. Note: You must format the memory card with UltraDash Z3 for first time use.
I cannot delete the file on UltraDash Z3	Be sure the file you are trying to delete is unprotected. If the file is protected, please follow the instruction on page 23 to unprotect the file first, and then delete the file.
My screen turns off after I just turned it on	The screen saver function turns off the screen after a period of inactivity. If you want to turn off this function, go to SETUP menu -> Screen Saver, and turn it off.
The message "Please Format SD Card" appears on my screen	UltraDash Z3 requires formatting the Micro SD card if the card is used on Z3 for the first time. Please format the SD card in the SETUP menu.
UltraDash Z3 does not charge	Be sure the power cord is connected properly. When Z3 is being charged, the blue LED indicator will illuminate.
A "Card Error" message appears on my UltraDash Z3	This indicates that the Micro SD card is not properly formatted to your UltraDash Z3. Please remove the files you would like to keep on to your PC, and perform a "Format SD Card" procedure to allow your memory card to function properly with Z3.
A "Card Full" message appears on my UltraDash Z3	When this message appears, your Micro SD card is at full capacity. Reminder: When you have protected files, you limit the use of your memory card. Delete unnecessary files to allow maximum use of your memory card.
UltraDash Z3 always turn on by itself	The parking mode function will automatically start recording a 30 second video clip and turn off when external forces are detected. If you want to turn off this function, go to SETUP menu -> Parking Mode Sensor, and turn it off.
I press the MENU button but nothing happens	Reminder: The UltraDash Z3 will not let you access the menu while it is recording. To access the menu, stop recording and the MENU feature will be accessible.
When I download files from the Cansonic website a malicious software message appears	If this message appears, simply adjust your browser settings and allow for the download to proceed. Once complete, reset your browser security to protect your PC.
Unresolved Issues	If you continue to have problems with your Cansonic UltraDash Z3, please reset your camera to default settings in the setup menu and begin the process over again. If these problems remain, please describe your question and send it to <a href="mailto:service_usa@cansonic.com">service_usa@cansonic.com</a> or call our customer service number provided on the Cansonic Website.



Instagram: @cansonic\_usa



Facebook: @cansonicusa



Youtube: Cansonic USA



Official: [www.cansonic.com](http://www.cansonic.com)

**Product Name:** UltraDash Dash Cam

**Model:** UltraDash Z3

**Manufacturer:** Cansonic Company Limited

**Address:** 3/F, Building 1, Guanlan Automotive–electronics Characteristic Industrial Park, Shenliang Group, No.299 Guanping Road, Guanglan Town, Longhua District, Shenzhen

---

**Subject to change disclaimer:**

While Cansonic has made every effort at the time of publication to ensure the accuracy of the information provided, images displayed on this manual are for illustration purposes and intended to help illustrate how the function operates and are not indicative of actual relative differences. Errors and omissions excepted. Product design, product specifications, availability are all subject to change without notice.

---