



2016-2021 Honda Civic Gamma Series Headlights

Part #: OLME.19006.1

Application:

Questions? Email us at: Support@OLM.com

Parts List:

- ① Left Headlight housing
- ② Right Headlight housing
- ③ Bluetooth control module
- ④ Control module harnesses

IMPORTANT NOTE:

Due to the nature of the RGB or to be known as “show mode” lights, and regulations and requirements of DOT, it is highly recommended to our customers that when the car is in motion or on public roadways, that the show mode lights are turned to an all-white color. Please be sure to consult with your local law enforcement on any questions regarding this feature before use.

Required Tools:

Pop clip tool or flat head screwdriver
Phillips screwdriver
1/4” or 3/8” ratchet
1/4” or 3/8” extension
10 mm socket

Installation Instructions:

1 – Park the vehicle on a flat, level surface. If you wish to jack the front of the vehicle up for better access, set the park brake as well.

NOTE: We recommend disconnecting the battery to help prevent any issues or possible shorts during installation.

2 – Pop the hood and locate the **23 radiator support and fender cover clips**, and **2 bolts with Phillips heads**. Remove and set aside for reinstallation.



3 – Remove the hood seal trim that overlays the headlights and front edge of the bumper cover.



4 – Under the front bumper you will need to remove the plastic splash shield. There are 5 pop clips and 2 10mm bolts. Set these aside for reinstallation.



5 – Move to the drivers fender well. Along the bumper cover are **2 Phillips headed screws** that will need to be removed.

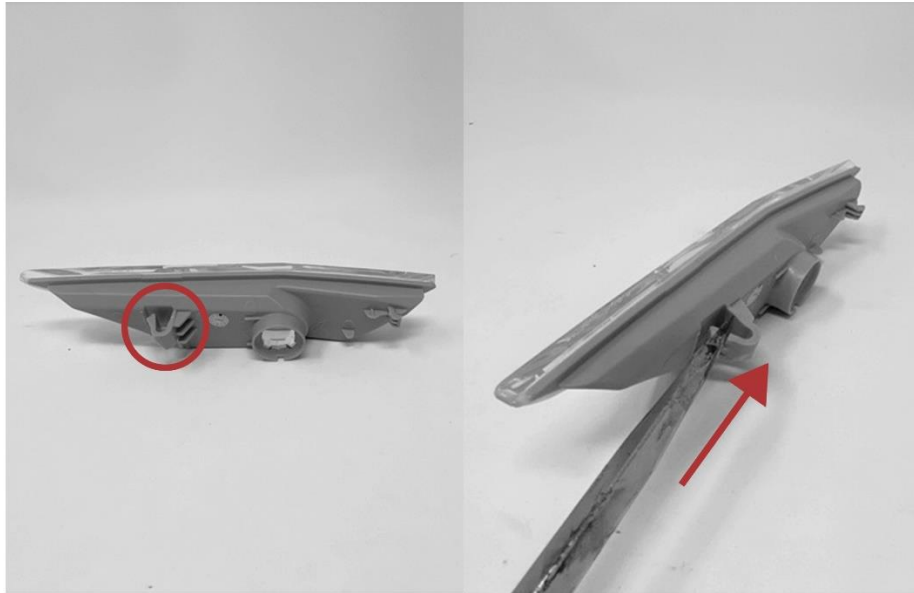
Pro tip: turn your wheels inboard to the correct side to create the clearance needed. Alternatively, you can also remove them for extra room.



6 – You will need to remove the side markers from the vehicle. By removing the previous 2 screws, the wheel liner should be able to be peeled back for access to the back side of the sidemaker housing.

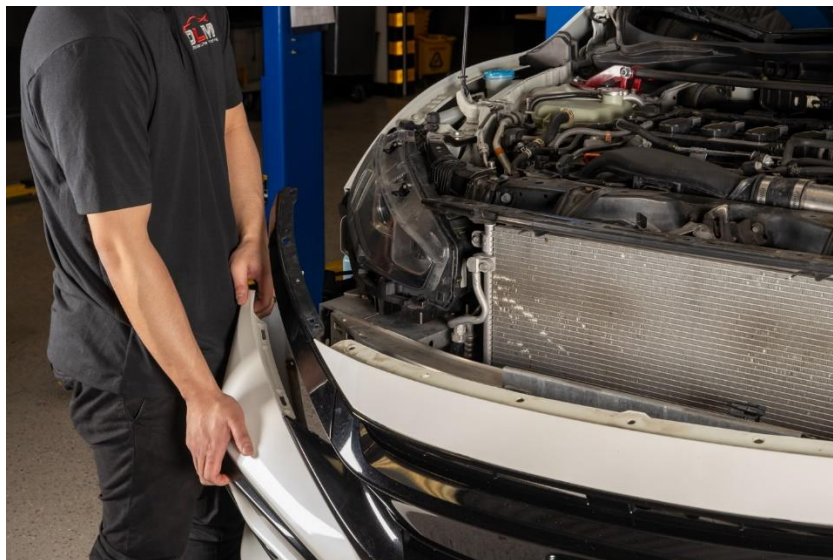


7 – Once the backside of the sidemaker is exposed, you will need to apply force on a spring clip toward the front of the vehicle to release. A flat bladed tool such as a screwdriver should work just fine.



8 – Once the housing is released, you will need to disconnect the bulb. You can do so by releasing the connector from the bulb socket, or what we found to be easiest, is to simply twist out the bulb socket with the harness still attached.

9 – It is now time to remove the bumper cover. It is recommended to have an assistant to help remove the cover to avoid damage. Have your assistant and yourself move to a fender well on each side. Grasp onto the bumper cover near the side marker area and pull towards yourself / outboard the vehicle. This will disengage the locking fingers from the bumper bracket. You should now be able to remove the bumper cover, set aside safely for reinstallation later.



10 – There are 2 10mm bolts along the crash beam that need to be removed:

1x near side marker area

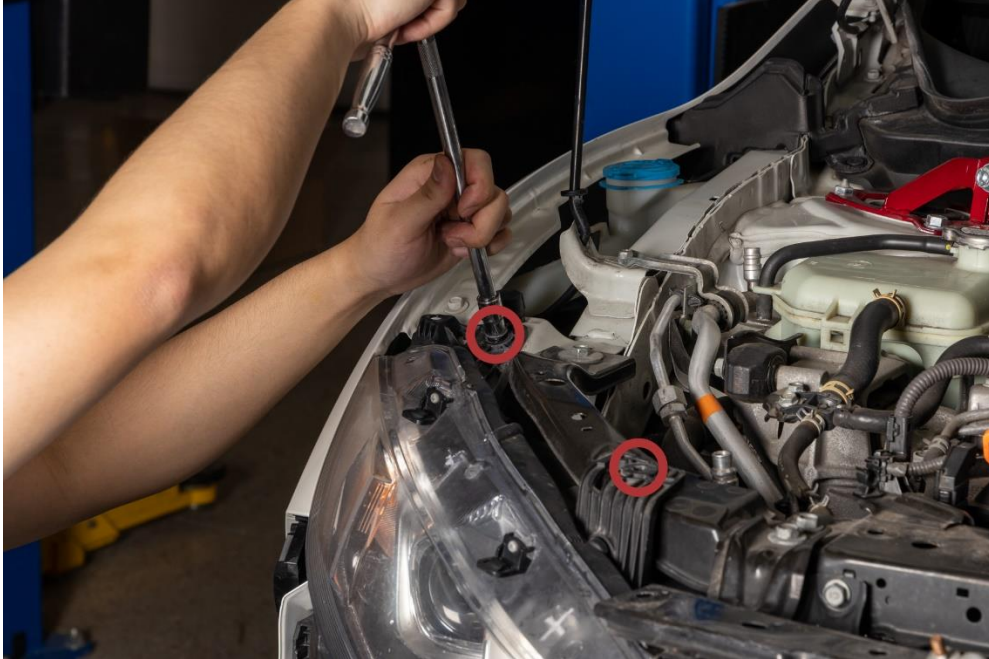
1x inboard, closer to the radiator



11 – Next, you will need to remove 3 10mm bolts

1x near side marker area

2x on top near radiator support



12 – Disconnect the electrical connections, there should be 3 in total. One for low beams, one for high beams, and one for the turn signal. There will be several clips securing the body harness to the headlight, remove and the headlight assembly should be free to take out.



13 – Set your OEM headlight assemblies on a work surface. You will need to transfer the bumper brackets attached to them over to your new OLM headlights. There are **2 10mm bolts** on the bottom of the housing. Tighten the bolts to 6.9Ft-Lbs or 9.4Nm.



14 – On the front of the OEM housings are 2 clips that help secure the bumper. Remove the phillips head screws and reinstall install to your OLM assemblies. Set aside for installation.

NOTE: *These screws are a self tapping screw or plastics. Overtightening these screws can cause **permanent damage** to the lens/housing of your lights. Take extreme care when installing.*



15 – You will need to install the included harnesses for your RGB and Show mode. Run the long harness along the radiator core support, as shown below. This will be covered by the trim taken off in step 2.

NOTE: It is recommended that you use a wire sheathing or conduit to protect your wires from chaffing on any metal surfaces. These types of coverings can be found at most parts or hardware stores.



16 –Locate the Bluetooth module and connect the harness ran in step 14 and 15 to the proper connections.

17 – Reinstall the 4 bolts from step 10 and 11 loosely. Once all are finger tight, torque to 6.9Ft-Lbs / 9.4NMm.

18– From here, the rest of the installation is reversed starting from step 9. If you have any questions on the physical installation of the headlights, please be sure to reach out to us!

Show Mode Control App Information

The app used to control the RGB lighting on these assemblies is the Happy Lighting app. This can be found in both the Apple App store, as well as the Google Play store. Scanning the below QR code will take you to the appropriate store to download for your device.



Revision Log:

5/1/2023 - Creation V1.0