



# N-GEN

## *VELOX Series*

### USER GUIDE & ASSEMBLY INSTRUCTIONS

# ***Thank you for choosing us!***

N-GEN, Next Generation, is Neo Chair's premium gaming chair brand targeting a higher level gaming chair than any other brands.

When pronounced, N-GEN is similar to the word engine ['endʒɪn]. Like the engine to a car, N-GEN gaming chair is the most important part for gamers who sit in the chair for a long time.

N-GEN's model names are inspired by the Latin words for "speed".

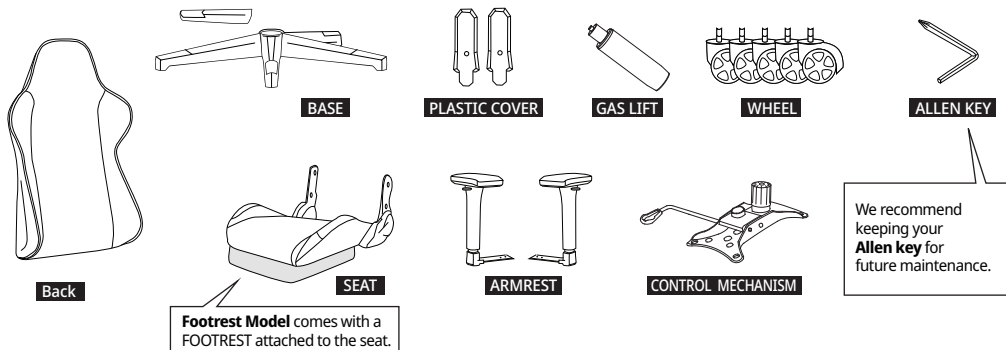


# IT'S TIME TO UPGRADE YOUR CHAIR!

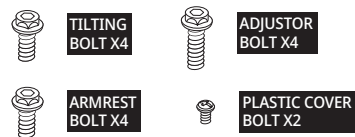
# N-GEN

## CHAIR PARTS

If you see any missing parts, please contact [support@neochair.com](mailto:support@neochair.com)



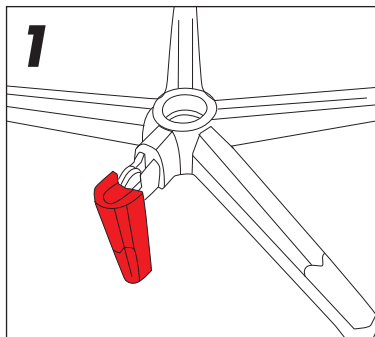
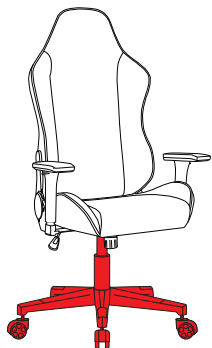
## HARDWARE



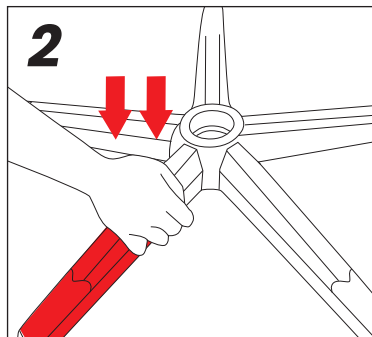
## ACCESSORIES



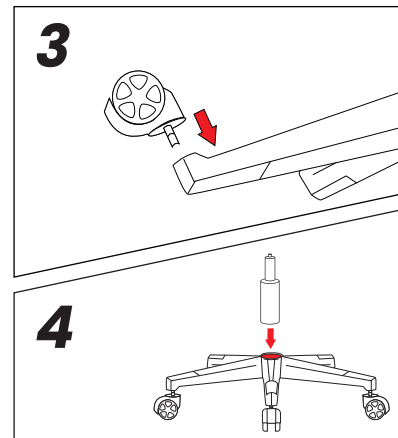
## STEP 1. BASE



Start with attaching the base leg vertically



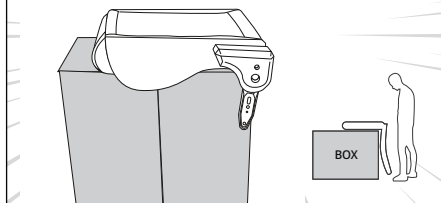
Press the base till you hear the "click"



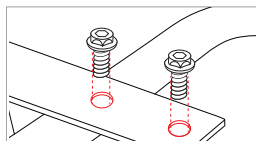
Let Team Neo Chair know if there are any issues. [support@neochair.com](mailto:support@neochair.com)

**ASSEMBLY TIP**

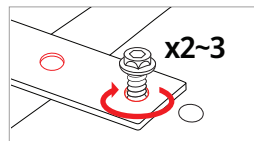
Use the **cardboard box** for easier assembly.



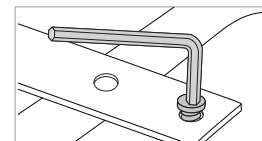
# IMPORTANT NOTICE



**1** THE BOLT HOLES SHOULD BE ALIGNED



**2** UNDER-TIGHTEN THE BOLTS



**3** TIGHTEN ALL BOLTS

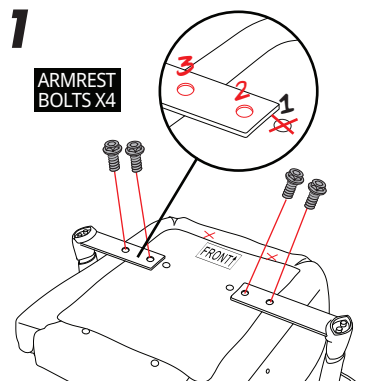
## STEP 2. ARMRESTS

**CHECK**

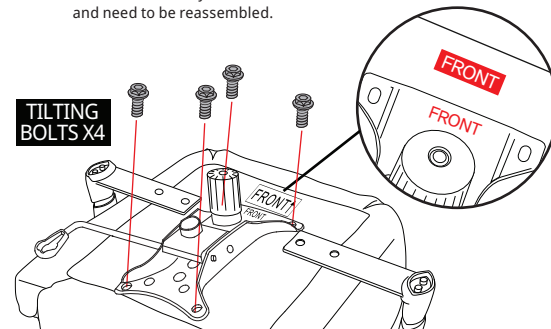
LEFT and RIGHT armrests are the SAME



ARMREST



**2** Be sure to match the "FRONT" labels. If not, the seat may lean forward and need to be reassembled.



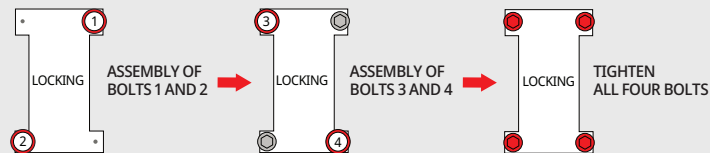
## LOOSE BOLT ALERT!

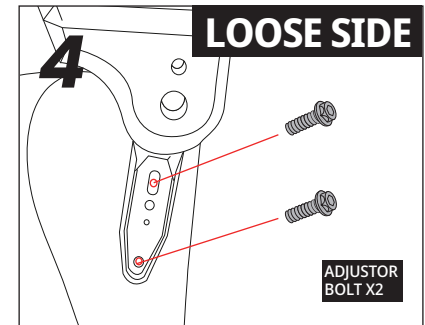
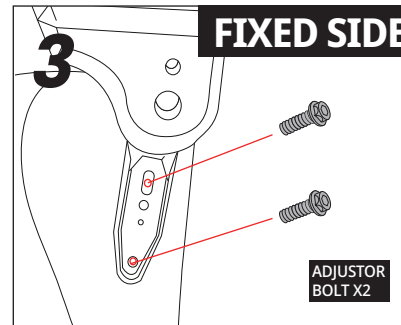
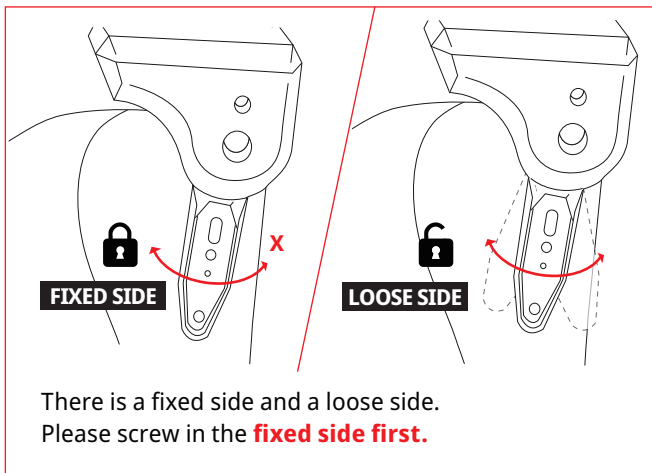
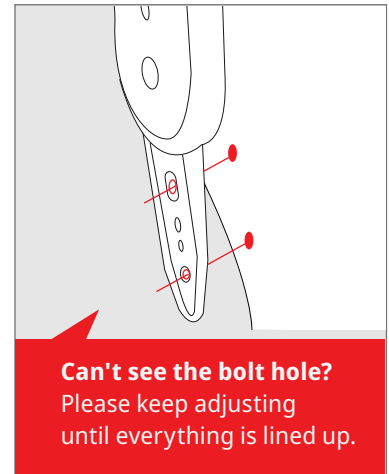
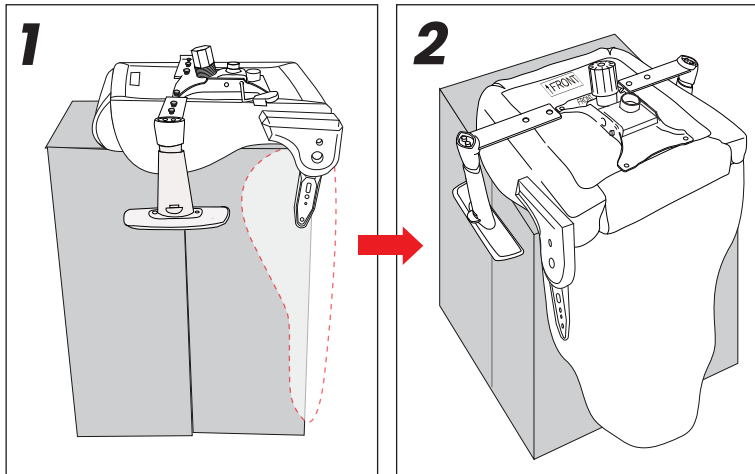
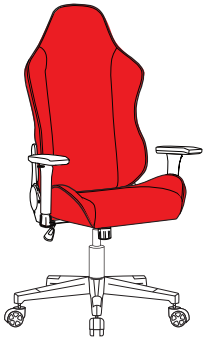
When the bolts seem loose, detach the armrests and try inserting the bolts directly into their holes.

\*Using an electric drill can damage the chair. Please re-tighten bolts manually.



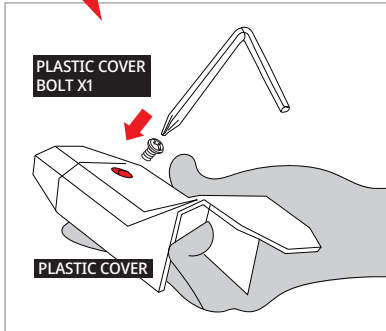
### TILTING ASSEMBLY SEQUENCE



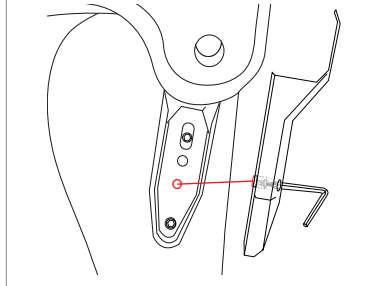
**STEP 3. SEAT+BACK**


Be sure to **strongly tighten** the recliner on.  
A cover goes on top of this part, making it difficult to re-tighten later.

## 5 **TIP:** Add the bolt in the cover first with the wrench.



Then assemble on top of the recliner.



Please repeat the process for the other side

## SAFETY INFORMATION



This product is designed for **one person** to sit at a time.



**DO NOT** use the chair unless all bolts, screws and knobs are tight



**DO NOT** use the chair if any of the components are missing or damaged.



**DO NOT** stand on the chair as a step stool or a ladder.



**DO NOT** tilt the chair forward, left, or right while sitting.



Be careful **NOT TO FALL** off from the chair.



Be careful, as some parts may be **sharp** and **heavy**.



Regularly check and tighten all bolts, screws, and knobs.



Failure to follow these warnings may cause **serious injuries**.



Be careful **not to hit** the furniture edges.



Keep in a **dry and cool** place.



When **moving** the object, proceed with **caution**.

## ALMOST DONE!

If there are any problems, contact Team Neo Chair.

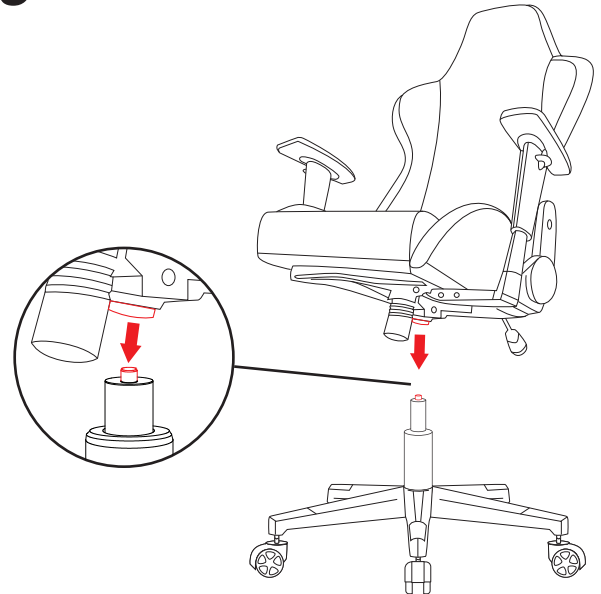
[support@neochair.com](mailto:support@neochair.com)



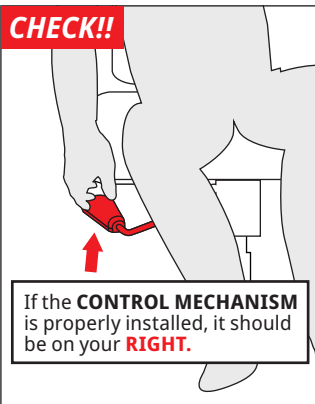
**CAUTION  
HEAVY OBJECT**

May cause muscle strain or back injury

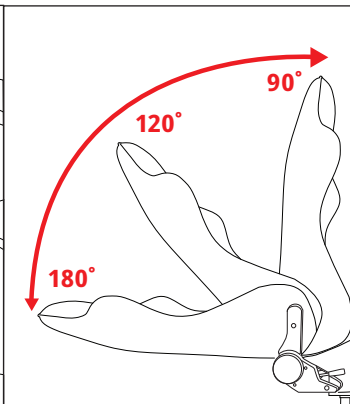
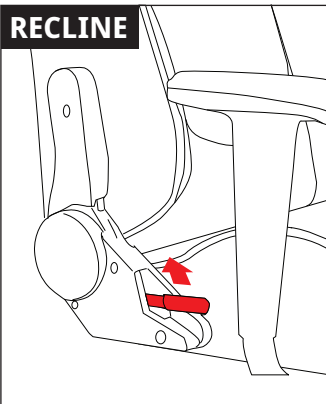
## 5



## CHECK!!

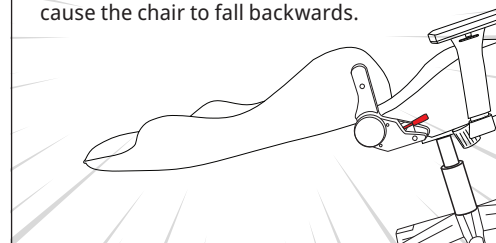


## RECLINE

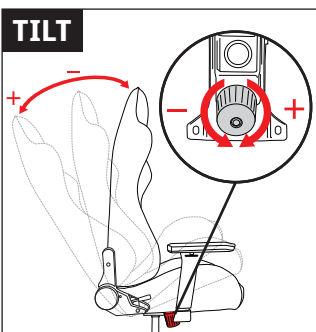


## MAKE SURE LOCK YOUR CHAIR FIRST BEFORE RECLINING.

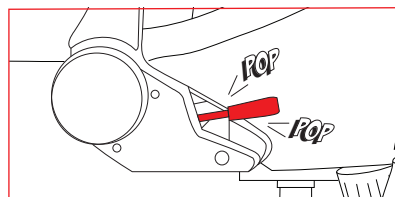
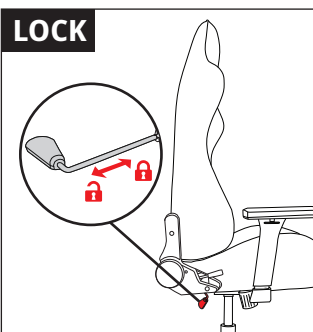
Please be advised that leaning the back to its **MAXIMUM 180** degree position may cause the chair to fall backwards.



## TILT

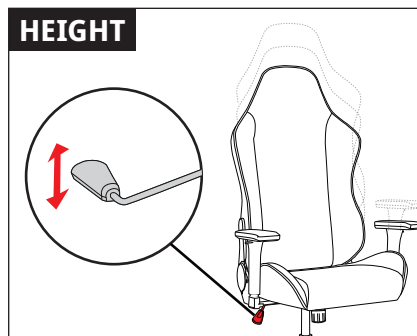


## LOCK

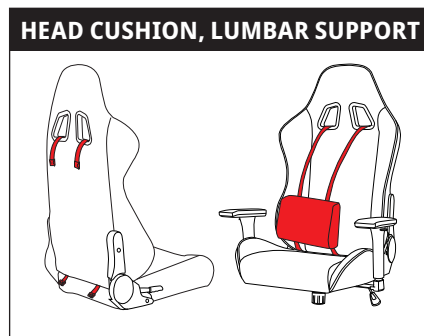


When you lay it down at 180 degrees, you may hear popping noises. This is not a defect of the product.

## HEIGHT



## HEAD CUSHION, LUMBAR SUPPORT



## ARMREST ADJUSTABLE





 neo chair  
[WWW.NEOCHAIR.COM](http://WWW.NEOCHAIR.COM)