



Compressor Mount 5G 4Runner

Thank you for selecting Runnin4Tacos™ as the choice for your air compressor mounting solution. The bracket designed for your truck utilizes pre-existing mounting holes for attaching the brackets and will require you to relocate some existing factory components to clear the way for the your air compressor kit to be installed. If you are uncomfortable with this type of work or you feel it is above your pay grade you are encouraged to seek professional installation of this product.

TOOLS REQUIRED

- 4mm Allen wrench
- 5mm Allen wrench
- 10mm wrench
- 12mm wrench
- 13mm wrench

The vibration induced by compressor operation makes the use of a thread locking compound absolutely **CRITICAL** during installation. Failure to follow this step can cause the bracket to loosen under heavy use causing component failure.

The required hardware for assembling and attaching the compressor bracket to your radiator core support is supplied in this kit. Due to the versatile mounting options and varying make/model of compressor compatibility hardware for attaching compressors to the mounting bracket are NOT provided and are the responsibility of the end user to ensure the fasteners used are adequate for the product being installed.

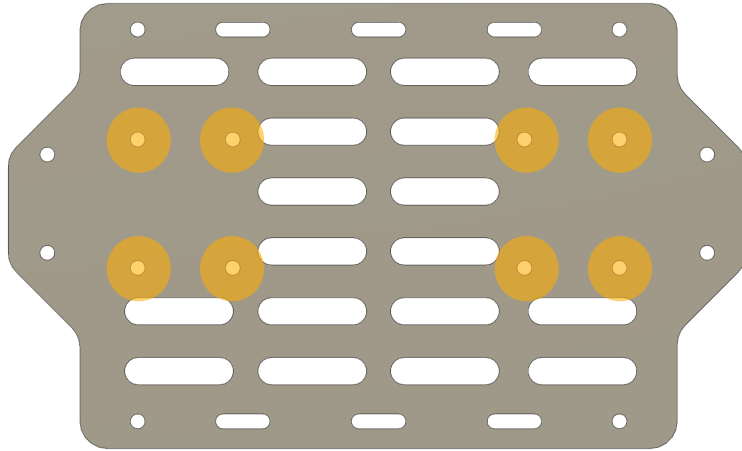
This kit is designed and intended for use on the 5th Generation Toyota 4Runner. (2009-2021 verified). Due to trim level options this bracket may not fit in the intended spot. Before relocating any factory installed options please verify the safety and feasibility of each component on a per case basis.

Installation requires altering the location of the factory horn components. Hardware is provided for this step. You WILL RE-USE SOME FACTORY HARDWARE throughout the installation process. DO NOT DISCARD ANY FACTORY FASTENERS until installation is complete.



Before proceeding with installation you need to remove the upper engine bay trim held in place with push clip fasteners. Remove and retain the trim cover and hardware for re-installation once the compressor system is installed and tested.

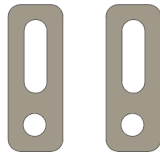
MAJOR COMPONENTS



4028

Air Compressor Mount Plate

- Designed for ARB Dual Compressor.
- Mounting Hole Alignment shown here in **ORANGE**.



4042

Short Slot Adjustable Bracket

- Quantity 2



4043

Long Slot Adjustable Bracket

- Quantity 1

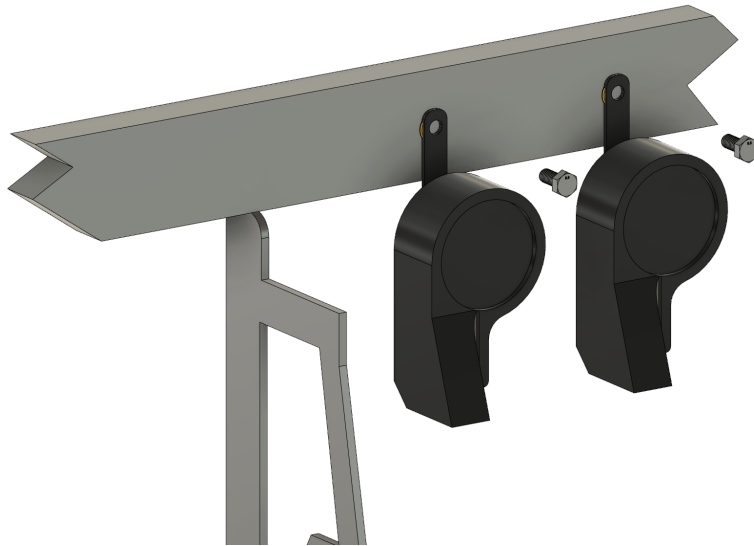


Figure 1
Factory Horn Relocation

The radiator core supports shown in this guide are a mock design and may not be an actual representation of the core support structure in your vehicle as these change from year to year with front facia redesigns. The hole locations may vary slightly from year to year but the locations will be prevalent on all model years of the 5th Generation Toyota 4Runner.

- **Using a 12mm wrench remove the two bolts used to secure the factory horn modules to the upper radiator core support. Save the bolts to convert vehicle back to factory but they WILL NOT be reused during installation.**
- **Disconnect the harness/connectors from each horn.**
- **Remove the wire tie clips securing the horn harnesses to the radiator core support center section.**
- **Route the horn wiring harnesses down to the center radiator core support (located in about the middle of your front grill area)**

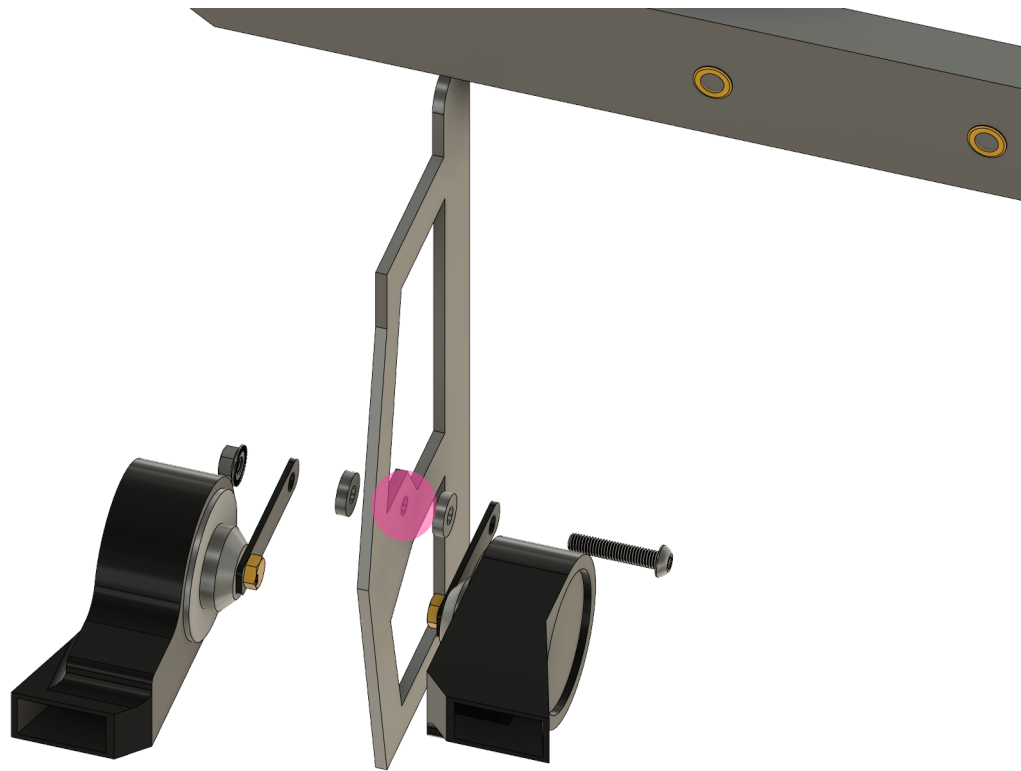


Figure 2
Factory Horn Relocation (Continued)

The radiator core supports shown in this guide are a mock design and may not be an actual representation of the core support structure in your vehicle as these change from year to year with front fascia redesigns. The hole locations may vary slightly from year to year but the locations will be prevalent on all model years of the 5th Generation Toyota 4Runner.

- **Your kit includes hardware to mount the horns in their new location. It is necessary for the horns to face forward to gain clearance. Rotate the horn assemblies so that the mounting tabs face the radiator core support. (Shown here in PINK)**
- **Align the holes in the factory mounting brackets (attached to the horns) to the hole located about mid way up in the radiator core support at the center of the truck.**
- **Using the supplied hardware:**
 - **M8x1.25 50mm Bolt**
 - **(2) .190" Aluminum Spacers**
 - **M8x1.25 Flange Nut**
- **Apply thread locking compound and assemble the hardware as shown to relocate the horns to the center of the radiator core support.**
- **Tilt the horns slightly downward to facilitate draining if intruded by water.**
- **Tighten the hardware into place using a 5mm Allen wrench and 13mm wrench. Final torque specification for this fastener is 115 inch pounds.**

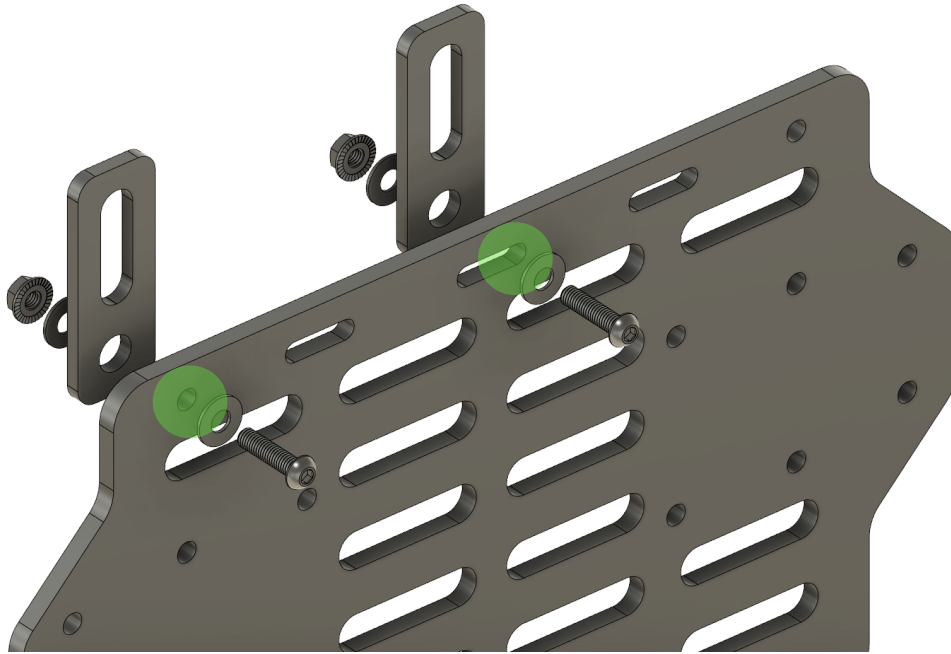


Figure 3
Short Slot Brackets

- **Locate the 4028 bracket included with your kit along with the two (2) 4042 Short Slot brackets.**
- **Use the following hardware for each 4042:**
 - **M6x1.00 25mm Bolt**
 - **6x18mm Flat Washer (2)**
 - **M6x1.00 Flange Nut**
- **Apply thread locking compound and attach as shown to the 4028 bracket.***
- **These slot brackets will align to the factory threaded holes that were used to mount the horns in the OEM location and be the upper anchor point for attaching the compressor mounting plate to the radiator core support.**
- **Simply SNUG the fasteners into place and leave them loose enough that you can adjust the brackets to facilitate alignment with the factory hole locations.**

***The 4028 bracket is symmetrical so there is no FRONT/BACK of the bracket. Please ensure that the locations for the hardware are used. (Shown here in GREEN.)**

- **One 4042 will attach through a machined HOLE.**
- **The other 4042 will attach through a machines SLOT.**

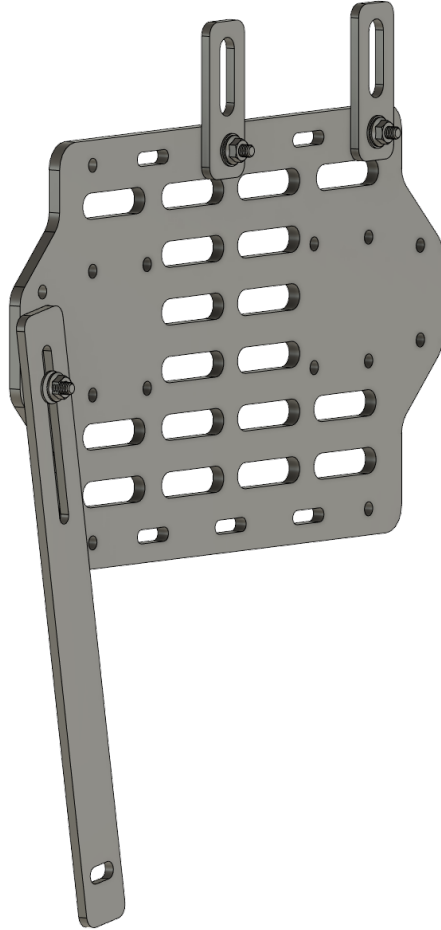


Figure 4
Long Slot Bracket

- *Locate the 4043 bracket included with your kit.*
- *Use the following hardware to attach the long slot bracket (4043) to the 4028 compressor mount plate.*
 - *M6x1.00 25mm Bolt*
 - *6x18mm Flat Washer (2)*
 - *M6x1.00 Flange Nut*
- *Apply thread locking compound and attach as shown to the 4028 bracket.**
- *The 4043 long slot bracket will align and attach to an existing factory hole that is currently used to secure a coolant line.*
- *Ensure that the 4043 long slot bracket attached to the LOWER hole on the far side of the 4028 with the long machined slot end closest to the 4028 compressor mount plate.*
- *Simply SNUG the fasteners into place and leave loose enough that you can adjust the bracket to facilitate alignment with the factory hole locations.*

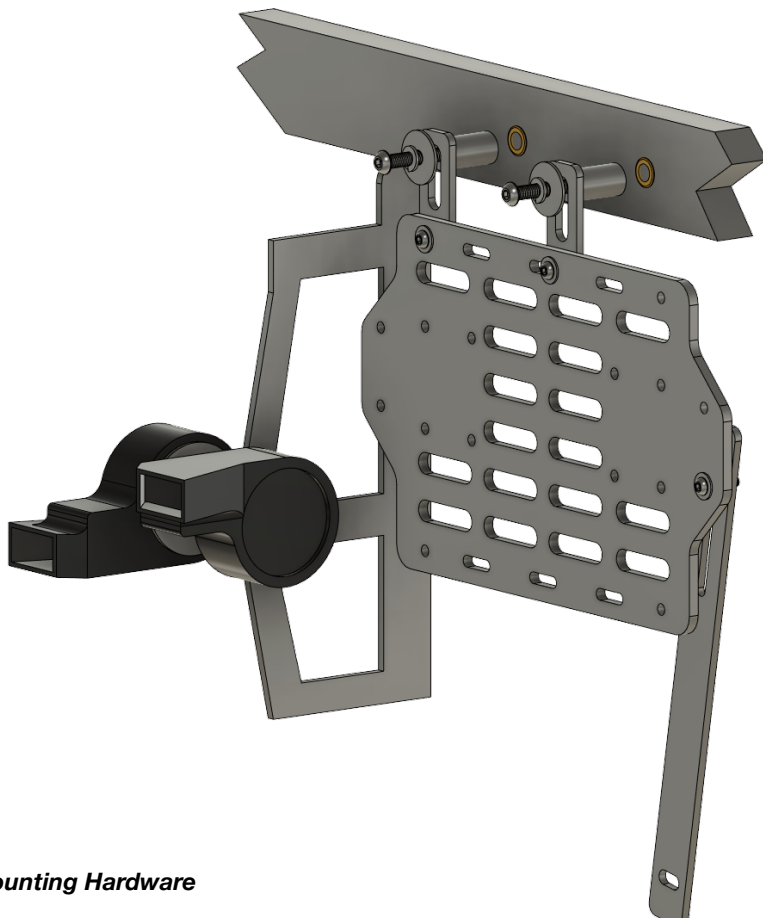


Figure 5
Upper Mounting Hardware

- *Rotate the assembly into the area between the vehicle grill and radiator.*
- *Use the following hardware to attach each of the short slot brackets (4042) to the vehicle using the two (2) holes left over from relocating the horn components.*
 - *Mx1.25 55mm Bolt*
 - *8x24mm Fender Washer*
 - *1.25" Aluminum Spacer*
- *Apply thread locking compound and attach as shown into the factory threaded holes left over from Figure 1.*
- *Rotate and adjust the 4042 brackets so that the compressor plate fits the vehicle level (parallel to the ground) and tighten all hardware.*
 - *M6 hardware **77 Inch Pounds.***
 - *M8 hardware **115 Inch Pounds.***

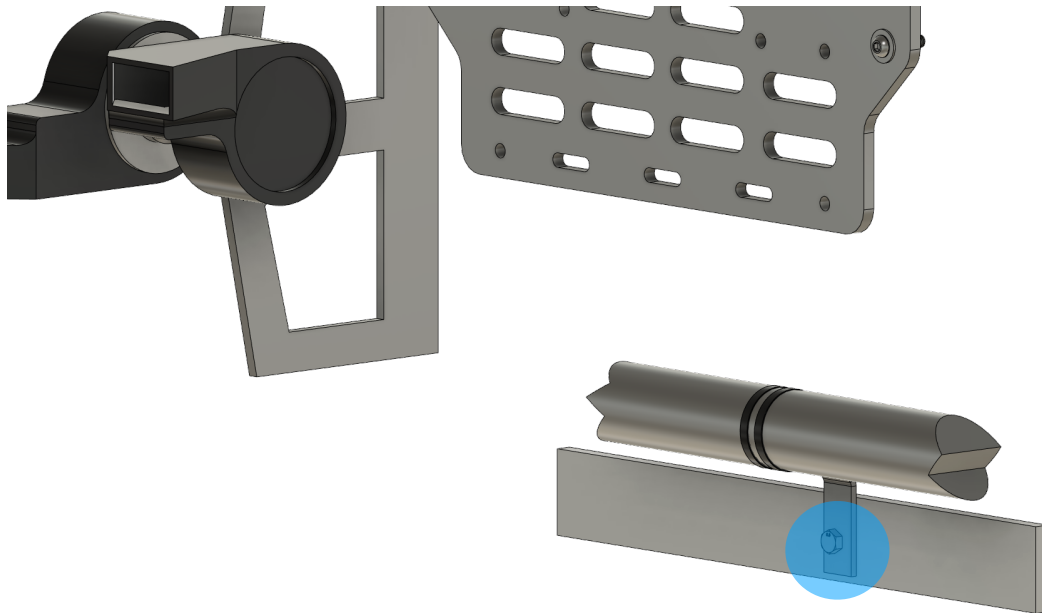


Figure 6
Lower Mounting Hardware Location

- *Locate the coolant line attached to the lower radiator core support with the banjo bracket attached. Shown here in **BLUE**.*
- *Remove the factory bolt to gain access to the threaded hole. The factory bolt will **NOT** be reused.*
- *This bolt is easily accessible on vehicles equipped an aftermarket bumper.*
- *For vehicles equipped with OEM bumper it may be necessary to remove the **DRIVER** side inner front fender as well as any lower valance/skid trim installed from the factory to access this hardware.*

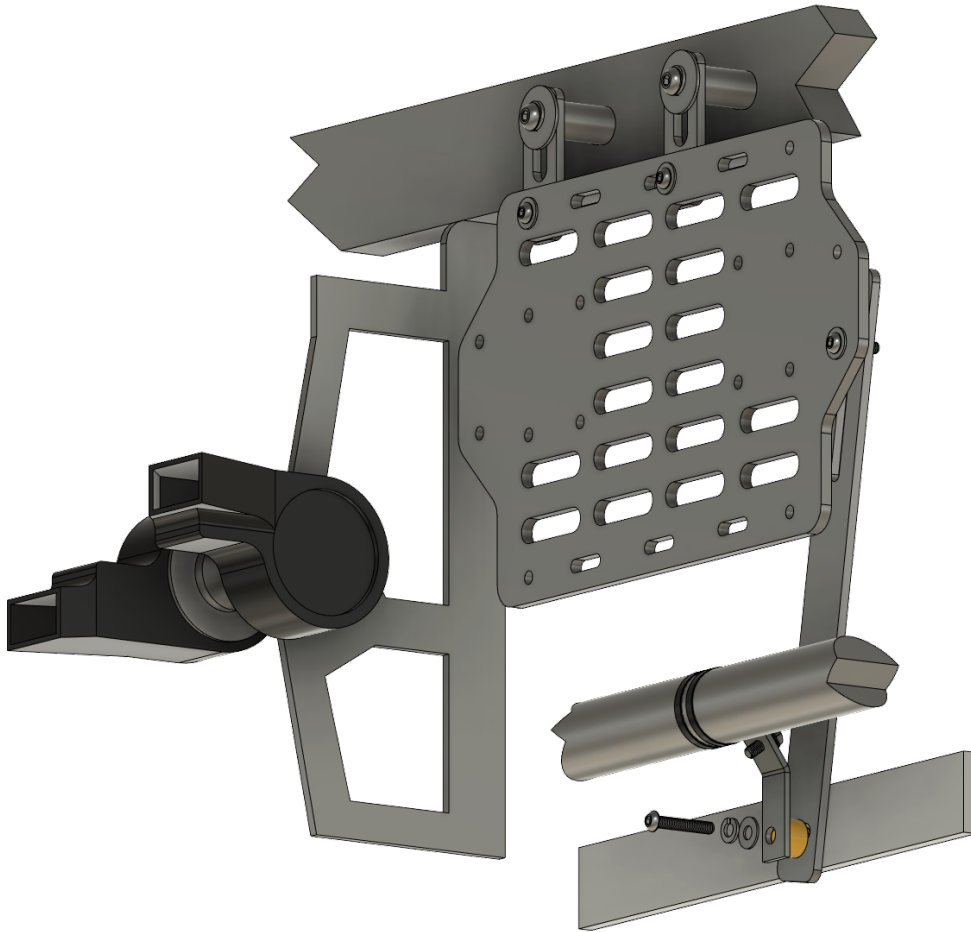


Figure 7
Lower Mounting Hardware

- *Rotate and align the small slotted end of the 4043 to the factory hole exposed by the removal of the bolt in figure 6 so that it rests against the structure of the lower radiator core support.*
- *Place the provided .500" spacer between the face side of the 4043 bracket and the tab on the radiator coolant line bracket.*
- *Apply thread locking compound and Install the following hardware:*
 - *M6x1.00 35mm Bolt*
 - *6mm Lock Washer*
 - *6x18mm Flat Washer*
- *With the bracket aligned tighten the hardware to **77 inch pounds**.*

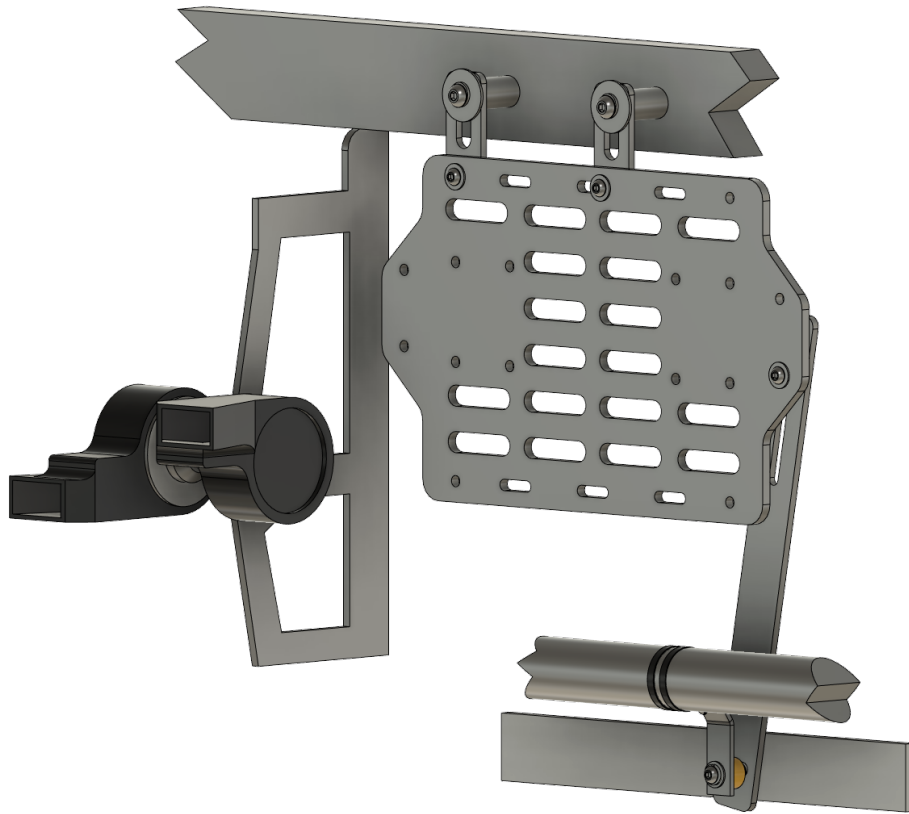


Figure 8
Compressor Mounting

- *This bracket system was designed specifically for the ARB Dual Compressor (CKMTA12/24).*
- *The all aluminum construction of the 4028 panel is easily drilled to accommodate other compressor types BUT please verify fitment of your compressor system before modifying from original design. Not all compressors will fit in the allocated space of your 4Runner.*
- *Align the compressor to the machined holes (See Page 2) and apply thread locking compound and mount your compressor to the plate with the provided hardware.*
- *Complete the electrical and plumbing steps in accordance with the guide provided with your compressor.*
- *Periodically inspect and verify torque on hardware with repeated use.*
- *Inspect and replace worn parts as needed.*