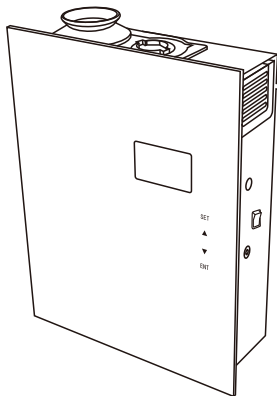




[www.scentbetter.com](http://www.scentbetter.com)

**SB-3000**

Essential Oil Nebulizing Diffuser



PRODUCT MANUAL



## IMPORTANT

Please comply with the following for safety reasons.

---



Do not modify or disassemble the scent machine without first consulting Scent Better.

In case of product failure please contact us.

---



Do not use the power cord if it is damaged, kinked or cut. It's a fire hazard.

---



To avoid electrical shock, do not touch the power adaptor or the machine while plugged into the electrical socket during a thunderstorm or lightning.

---



Do not dismantle or try to repair the machine while its plugged into an electrical outlet, or in operation.

---

## CONTENTS

DISCOVER THE POWER OF SCENTING! .....	3
FEATURES .....	3
TECHNOLOGY .....	4
SPECIFICATIONS .....	5
DIAGRAM OF PARTS .....	6
ACCESSORIES .....	6
WHERE TO PLACE THE DIFFUSER .....	7
INSTALLATION INSTRUCTIONS .....	8
HVAC INSTALLATION .....	10
TIMER SETTINGS.....	15
AROMA OIL CONSUMPTION.....	18
INTENSITY AND CONSUMPTION.....	19
MAINTENANCE.....	20
TROUBLESHOOTING.....	21
CAUTIONS.....	22

## DISCOVER THE POWER OF SCENTING!

Scent is a fantastic way to express yourself, reduce stress, enhance happiness, give your memory a boost, increase your energy, sleep better, and uncover a host of other benefits. The SB-3000 will change the way you think about scents and reveal a multitude uses in your home or business. Simply add your favorite Scent Better scents and transform your space into whatever you need it to be. The SB-3000 allows you to easily tailor your scent experience to your preferences and your space. With unique cold-air diffusion technology, this diffuser scents your environment subtly and consistently while preserving the quality of your 100% Essential or Aroma Oils.

Its sleek design and modern aesthetic look will help you make any space more inviting and vibrant.

## FEATURES

- Scents 3,000 square feet of space
- Heat-free cold-air diffusion technology that subtly disperses essential oils into the air
- Connects to HVAC / AC
- Wall mount or stand-alone
- Adjustable fragrance intensity and hours of operation
- Quiet and energy efficient
- Eco-friendly and made from recycled aluminum
- No water or heat required
- Leaves no residue

## TECHNOLOGY

The SB-3000 uses nebulization (cold-air diffusion) technology to diffuse our aroma oil blends, this is a process that breaks down the oils into a very fine, dry mist. Nebulization preserves the intention and integrity behind our oils while maximizing their olfactive and therapeutic powers, without diluting in water, solvent, or using heat.

This patented nebulizing technology, combined with our Essential and Aroma Oil blends, produces nanoparticles that suspend in the air for several hours, creating a clean and consistent ambient scent without chemical undertones.

Cold-air diffusers support healthy indoor air quality while providing an improved ambiance for you and your loved ones.

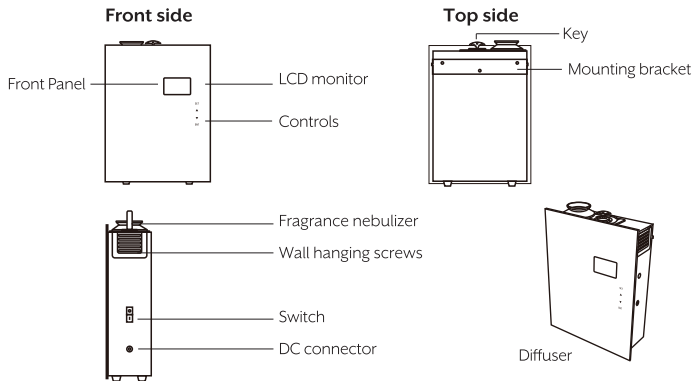
Diffusing helps to reduce dust, pet dander allergens, and other airborne allergens from non-living matter (e.g. dust mite matter allergens), while Scent Better's 100% all natural diffuser blends bring nature's goodness into your space, supporting harmony and balance.

Using only Scent Better essential and aroma oil blends will guarantee the best performance of your diffuser. No mixing or diluting with water, carrier oils or alcohol is required. Simply fill the bottle with what nature created and enjoy!

## SPECIFICATIONS

[ Model ]	SB-3000
[ Dimension ]	230 x 313 x 90mm / 9" w x 12" h x 3.5"
[ Machine N.W. ]	3.85kg / 8.4lbs
[ Voltage ]	Input: AC100V-240V 50/60Hz Output: DC12V 1A
[ Technology ]	Twin-fluid atomization technology
[ Power ]	8W
[ Coverage ]	300 sq.m / 3,000 sq.ft.
[ Bottle capacity ]	500ml
[ Material ]	Machine: Iron, acrylic Bottle: PET
[ Accessories ]	Power adapter, Bottle, Manual, air tube, HVAC Adaptor, Silencer, Nails, Screws, Mounting bracket, PTFE tape.

## DIAGRAM OF PARTS



## ACCESSORIES



## WHERE TO PLACE THE DIFFUSER

**Applications:** aromatherapy, ambient scenting and odor control in home or business.

**Location:** The SB-3000 is designed to be used as a table-top, wall mounted or HVAC connected unit.

**Scenting Coverage:** SB-3000 can be adjusted to scent an area ranging from 100 to 3,000 sq.ft. (10 to 300 sq.m)

**Scent Intensity:** Adjust your scenting experience and hours of operation using the internal touch LCD timer.

**Device Location:** The most important element of your scenting experience is to properly position the device in the room, to ensure optimal performance and control.

### Location Suggestions

- Choose a location where the aroma oil molecules can use the natural airflow in a room. This is particularly important with air-conditioned spaces. The best location for the SB-3000 is where there is a lot of airflow.
- If you are not sure of the direction of the airflow, simply turn on the SB-3000 and using a flashlight, point at the scent output and watch where the scent travels. Alternatively, light a match and blow it out immediately. The direction of the scent or smoke will tell you which way the fragrance will travel.
- The SB-3000 is a luxurious and aesthetically beautiful device. Always keep it in an open area and do not hide it behind or under pieces of furniture.
- Try a variety of locations and settings until you are happy with the scent coverage. Give the SB-3000 a little time to adjust to the new location and setting before changing it again.



## INSTALLATION INSTRUCTIONS

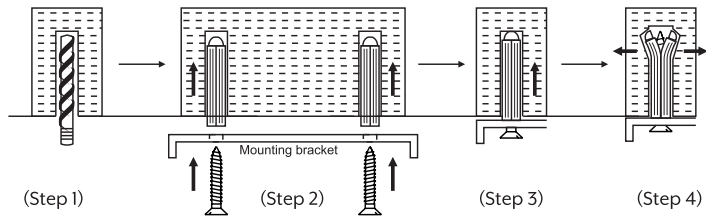
SB-3000 can be used as a portable device, wall mounted or connected to your HVAC unit. If you are wall mounting or connecting the SB-3000 to the HVAC, please follow the below instructions. If you are using the device as a free-standing unit, please go to page 15 to set up the timer.

### Parts and Tools Required

You will require the following tools to wall mount or connect the SB-3000 to your HVAC. No tools are required for stand alone installation.

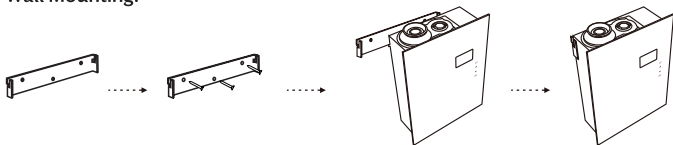
1. A level, to ensure the wall mount bracket is exactly horizontal.
2. A hammer, for the dry wall anchors.
3. A Philips screwdriver, to match the screws provided or any other screwdriver that matches the screws to attach to the anchors you have selected.
4. Drill and drill bit to drill an opening in the duct for the air tube.

### Mounting Wall Bracket



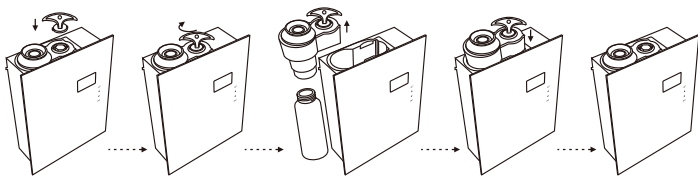
1. Using drill bit, make a hole in the drywall the size of the plug.
2. Insert the drywall plug. If necessary, tap lightly with a hammer to fully insert the plug.
3. Screw the bracket to the wall, aligning with drywall plugs.

### Wall Mounting:



1. Always make sure the SB-3000 is mounted straight up.
2. Attach the wall bracket using all the supplied screws or nails (depending on the surface).
3. Hang the machine on its hinges.

### Filling the oil bottle:



1. Unplug the machine from the outlet.
2. Insert the key.
3. Rotate the key clockwise to unlock.
4. Remove the diffuser housing with bottle and fill it with scent.
5. Insert the diffuser housing with bottle back into the device.
6. Lock with the key.

## HVAC INSTALLATION

### HVAC Pre-installation Checklist

Please complete this checklist prior to installing the scent diffuser.

1. Confirm the area to be scented.
2. Locate the Air Handling Unit or duct that serves the area to be scented.
3. Make sure the Air Handling Unit does not use an open gas flame.
4. Locate and mark the optimal position for the Scent Introduction Point. (See FIG A page 13)
5. Locate and mark the exact location for placement of the scent diffuser. (See FIG A page 13)
6. Confirm the distance between the Scent Introduction Point and the proposed scent diffuser location. (Air tube should be max. 3 feet. Avoid dips and coils or lows in the air tube. The Scent Introduction Point should ALWAYS be higher than the scent diffuser).
7. Locate and install 110 or 220V AC power outlet close to the diffuser install location. Avoid placing the power outlet directly under the scent diffuser.

### Scent Diffuser Positioning

It is important to locate an insertion point where the scent output will be smoothly drawn into and mixed with the airflow. This usually means those parts of the AHU where the static pressure is negative.

#### Ideal locations:

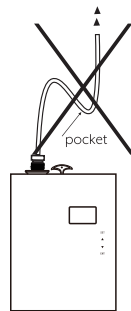
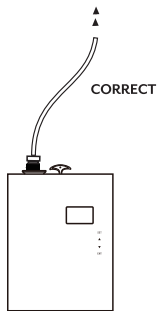
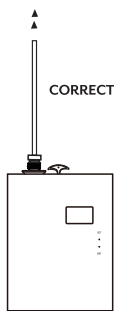
- Before the supply fan with injection through the wall of the AHU. Positioning immediately before the fan and after the coils if possible, or in the mixed air chamber.
- Behind the blower with the entire scent diffuser mounted inside the AHU in the mixed air chamber.
- Outside the AHU in the Supply Air duct.

Best practice when installing in an AHU is to place the air tube after the heating and cooling coils. If this is not possible, the scent output can pass over hot water, steam, chilled water, and DX coils.

**Open gas flames should absolutely be avoided. If installation must be over gas heated coils or open gas flames, contact Scent Better Technical Support.**

The best location for the device is below the Scent Point. The air tube should run upward as short a distance as possible and **never more than 3 feet**. If an upward air tube run is not possible, care should be taken to support the hose to prevent sagging or any low spots in the run to avoid any possibility of condensation and liquid collection which will block the scent output. Give the air tube an upward slant along its run. (See below).

### Tube Connection to the Air Duct



**INCORRECT. Tube has a pocket, this part will fill up with oil.**

## Connecting the Diffuser to HVAC.

Refer to the SB-3000 HVAC Connection Diagram (FIG A).

The SB-3000 is a versatile and powerful commercial scent diffuser. If you decide to connect it to your HVAC system, follow the below steps. Diffusing the scent via HVAC will allow you to cover multiple rooms and zones. To scent the right zones, check with your HVAC provider or Mechanical Engineer to determine which HVAC unit to connect to.

The SB-3000 can scent spaces of 100-3,000 sq.ft. If your space is larger than 3,000 you will require a larger scent diffuser.

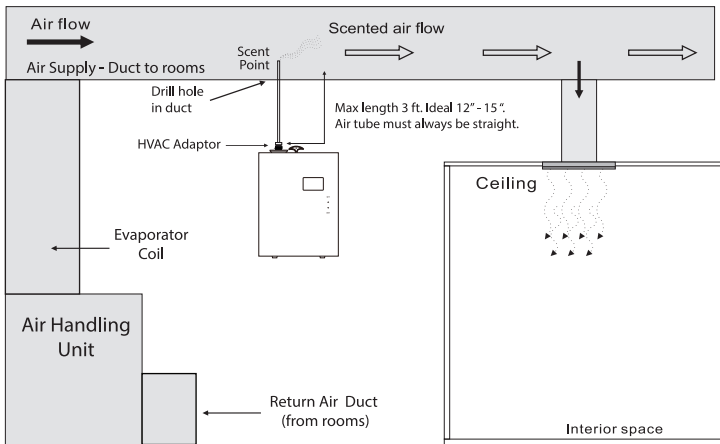
**NOTE:** The SB-3000 can cover 3,000 sq.ft. of space.

1. You will want to choose the air handler you want to connect to. If you have multiple air handlers, select the one that will cover the area you wish to be scented. Consult your HVAC supplier if needed.
2. With a metal drill bit designed to drill through sheet metal, drill a 16mm or 5/8" hole in the air duct directly after the blower. Make sure you are tapping into the supply side of your duct, not the return side. This opening is called a Scent Introduction Point.
3. **IMPORTANT:** Never install before the coils or filters as the filters will dilute the scent and you will not get an inferior result.
4. Once the hole is made, insert an air tube. When inserting an air tube point it with the airflow, not against it. Pointing the tube into the airflow will block the scent output. This will allow the scent to travel in the same direction as the air flow.
5. Take the HVAC adaptor and screw it into the SB-3000.
6. Either wall mount the SB-3000 to the duct, the wall or place on a shelf directly under the Scent Point connection. It's important to keep the SB-3000 as close as possible to the scent point. **Max air tube length should be 3 feet.**
7. Cut supplied air tube to required length to go from the SB-3000 to the duct. The distance between the SB-3000 and Scent Point should be as short as possible.

**Air tube length should be between 6-36" max.** Do not leave any slack. Coiling or excess air tube will create air pockets and buildup of scent inside the tube.

8. Connect the SB-3000 to the 110V-240V plug and set the timer.

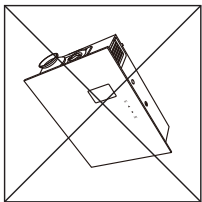
### SB-3000 HVAC Connection Diagram (Figure A)



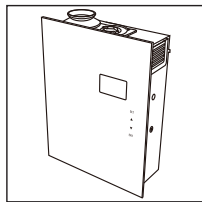
**IMPORTANT:** Do not drill through a coil, or before the filters.

**Warning:**

After installation, please keep the machine vertical. Tilting or placing it flat may cause an oil overflow. If the SB-3000 is tilted, the oil will over flow inside and may potentially damage the machine.



**WRONG**



**CORRECT**

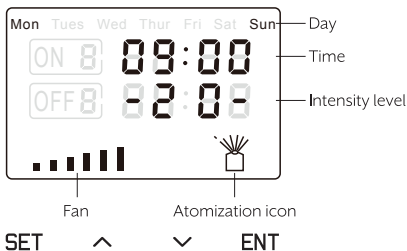
## TIMER SETTINGS

### POWER ON/OFF

Connect the I2V adaptor to the outlet and turn **ON** the power switch. Local time and scent intensity level will appear. To shut the device off simply switch the power button to **OFF**.

### Screen Lock and Unlock

The LCD screen will automatically lock itself after 1 minute if not used. Press **SET** button and hold for 5 seconds to unlock the display.



Touch button (about 2 seconds) to turn on **the fan**, fan icon  display on screen:

Touch button (about 2 seconds) to turn off the fan, fan icon is choice:

Use the fan to help push the scent out further. This is especially helpful in areas where air flow is weak.

**NOTE:** Speed of the fan does not increase or decrease the scent output. Scent output can only be increased by using the UP and DOWN buttons. When the device is not operating the fan icon will show full bars.

### Local time setting (24 hour / military format)

Press **SET** button for 5 seconds brackets to enter Local Time setting menu.

Note that time setting is only available in military (24 hour) format.

Press **v** or **^** button to choose the correct day. Then press **ENT** button to move to setting local time. Press **v** or **^** button to change hours and minutes. Press **ENT** button to move to another position. Press **SET** to confirm (Figure 1).



## Setting Hours of Operation

The SB-3000 timer allows user to create up to 5 different operating variants. To create multiple variants where your device will turn ON and OFF at different times of the day or week use the below steps to set your variants.

To begin touch SET button to set Variant 1. (ON1 & OFF 1). (Figure 1)

Press ▲ or ▼ button to adjust the ON hours, then press ENT to move to the next position.

Press ▲ or ▼ button to adjust the ON minutes, then press ENT to move to the next position.

Press ▲ or ▼ button to adjust the OFF hours, then press ENT to move to the next position.

Press ▲ or ▼ button to adjust the OFF minutes, then press ENT to move to the next position.



SET ^ v ENT

(Figure 1)



SET ^ v ENT

(Figure 2)



SET ^ v ENT

(Figure 3)

In this example the device is operating from 09:00 to 17:00 Mon-Sun.

Now select the Day(s) of the Week for this variant. Use the ▲ or ▼ button to turn ON (Figure 2) or OFF (Figure 3) the day for this time period. Press ENT to move to the next day. When you have your day(s) selected, press SET to move to the second variant (ON 2 & OFF 2).

When finished setting your variant (s), touch SET to cycle through remaining variants until you see local time. This ensures you exited the Hours of Operation screen.

To set only one START and STOP time for every day of the week (ie. ON at 9:00 OFF at 17:00) only use Variant 1 (ON 1 & OFF 1). Leave all other variants at 00:00. (ON 2 through ON 5 and OFF 3 through OFF 5 set to 00:00).

AVAILABLE WORKING PERIOD	07:00 - 21:00	00:00 - 00:00	00:00 - 00:00	00:00 - 00:00	00:00 - 00:00
MON	ON/OFF	ON/OFF	ON/OFF	ON/OFF	ON/OFF
TUES	ON/OFF	ON/OFF	ON/OFF	ON/OFF	ON/OFF
WED	ON/OFF	ON/OFF	ON/OFF	ON/OFF	ON/OFF
THUR	ON/OFF	ON/OFF	ON/OFF	ON/OFF	ON/OFF
FRI	ON/OFF	ON/OFF	ON/OFF	ON/OFF	ON/OFF
SAT	ON/OFF	ON/OFF	ON/OFF	ON/OFF	ON/OFF
SUN	ON/OFF	ON/OFF	ON/OFF	ON/OFF	ON/OFF

(The first variant is set to factory default setting, 7 am ON and 9 pm OFF. The rest are at set to 00:00)

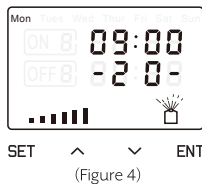
### Setting Scent Intensity

You are now ready to start scenting. Remember, the SB-3000 is a high performance adjustable device capable of scenting spaces from 100 to 3,000 sq.ft. Once the fragrance is in the device, basic operation is simply adjusting the scent level to match the room size, conditions, and your taste. There are 20 grades of intensity.

Use the UP ▲ button and DOWN ▼ button to control the scent intensity (Figure 4).

Start at minimum and watch the scent spread throughout your space. If needed, adjust the buttons to increase or decrease the intensity accordingly.

This is a unique and powerful performance feature of the SB-3000. Once you have chosen the right setting, you should only have to adjust slightly with the different fragrances.



(Figure 4)

### Recommended Intensity Settings.

The grading system starts from 1 (being the lowest) and ends with 20 (being the highest). Short but frequent bursts are recommended. Using the lower settings will allow for a subtler scenting experience, without being over powering. Intensity setting is personal and depends on multiple factors, such as air flow, the location of the scent machine and how subtle or strong you want the scent to be. Use your discretion and start out at Grade 1 and work your way up if needed.

To test whether the intensity is too strong or too light, leave the scented area for at least 5 minutes and re-enter after getting some fresh air. Only then will you be able to tell if the intensity grade needs to be adjusted up or down.

Please note that the human nose gets used to a fragrance after 30 minutes of exposure. If at any point during the diffusion process you don't smell the scent anymore, simply leave the scented area and reenter after getting some fresh air.

## AROMA OIL CONSUMPTION

	SB-3000 (500ml)									
	G1	G2	G3	G4	G5	G6	G7	G8	G9	G10
Consumption(ml/h)	0.15	0.30	0.46	0.61	0.75	0.91	1.05	1.21	1.36	1.51
	G11	G12	G13	G14	G15	G16	G17	G18	G19	G20
	1.66	1.81	1.96	2.11	2.25	2.41	2.55	2.71	2.86	3.02

**Note:** 1. Above data is based on using Scent Better aroma oil.

2. Using another type of oil may affect the consumption rate.

3. Note that some 100% pure essential oils tend to diffuse a lot faster.

## INTENSITY AND CONSUMPTION

### Intensity Level and Time Cycle

Using the UP ▲ or DOWN ▼ button allows you to control the intensity of the fragrance output.

Grade	ON (seconds)	OFF (seconds)
G1	15s	300s
G2	15s	150s
G3	20s	120s
G4	20s	85s
G5	25s	80s
G6	30s	75s
G7	30s	60s
G8	30s	50s
G9	30s	40s
G10	30s	33s
G11	33s	30s
G12	40s	30s
G13	50s	30s
G14	60s	30s
G15	75s	30s
G16	80s	25s
G17	85s	20s
G18	120s	20s
G19	150s	15s
G20	300s	15s

## MAINTENANCE

### Machine cleaning:

1. We recommend cleaning the SB-3000 every 2 months.
2. When changing oil, clean out the diffuser.
3. If scent diffusion becomes weak, cleaning is recommended.

### Cleaning steps:

1. Empty the oil from a canister and replace with 20ml of rubbing alcohol.
2. Screw the bottle into the diffuser and turn the machine ON for 20 minutes to clean out the diffuser head and tube.
3. Pour out the rubbing alcohol (no rinsing required) and replace with your favorite aroma oil blend.

### Tips:

You can start using the scent machine immediately after cleaning it. There is no need to wash the tube.

### IMPORTANT

- If the screen crashes, press **ENT** and hold for 5 seconds to reset the machine and return it to factory settings.
- After installation make sure scent diffuser is *always* vertical and not tilted or on its side.
- When the machine is on pause and not diffusing the atomization icon will be displayed.

## TROUBLESHOOTING

Before submitting a warranty claim, please try the below steps to diagnose the problem and fix the issue. For warranty information, please contact Scent Better at +1.866.216.6681 or send us an email at [help@scentbetter.com](mailto:help@scentbetter.com)

Problem	Solution
No diffusion	<ul style="list-style-type: none"><li>- Check if the power is ON or OFF.</li><li>- Check whether the pump is damaged and needs replacing.</li><li>- If there is no diffusion or it is weak, replace the oil with rubbing alcohol and run it through the machine for 5 min.</li></ul>
Little or no spray coming out	<ul style="list-style-type: none"><li>- Atomization head is blocked. Clean diffuser by running rubbing alcohol through it. Or replace diffuser core.</li><li>- Diffuser core with straw is missing or damaged. Replace with a new one.</li><li>- Pump is damaged and may need replacing.</li></ul>
Diffuser spraying liquid	<ul style="list-style-type: none"><li>- Diffuser core is damaged. Replace diffuser core.</li><li>- Machine is tilted or angled. Make sure it's upright at all times.</li></ul>
Oil leaking	<ul style="list-style-type: none"><li>- Bottle is loose. Screw it in, ensuring it is straight.</li><li>- Seal is broken or missing. Replace the supplied seal that came with the machine.</li></ul>
Abnormal sound	<ul style="list-style-type: none"><li>- Pump is loose or damaged. Tighten the pump or replace it.</li></ul>
No display on screen	<ul style="list-style-type: none"><li>- Make sure the power is ON. Press SET for 5 seconds.</li><li>- Check the plug for damage. Try another outlet. If plug is damaged replace it.</li><li>- Display screen is damaged. Replace it.</li></ul>

## CAUTIONS

- Only use the power adapter supplied with the device.
- Never operate the diffuser if the power adapter is damaged.
- Do not use the diffuser if any part of the device is broken.
- To reduce the risk of electric shock, do not attempt to service the device in any way other than as described in the “Care & Maintenance” section of this manual.
- Do not disassemble or attempt to repair the diffuser; in the event of a problem, please contact us at +1.866.216.6681 or email [help@scentbetter.com](mailto:help@scentbetter.com)
- When moving the device, always keep it upright and secure, using both hands.
- Always place the unit on a stable, level surface, i.e. a shelf or table.
- Do not plug the unit into the wall socket with wet hands
- Do not pour water or other liquids into the bottle with aroma oil.
- Do not tilt, move, or attempt to empty or refill unit while in operation.
- To prevent clogging of the diffuser, run rubbing alcohol through once a month for 15 min.
- Always turn off and unplug the device during maintenance, or when not in use.
- Ensure that the power adapter is not covered or blocked when plugged in; it must be able to dissipate heat properly.
- Do not cover the diffuser with objects or material while in use.
- Keep the device at least 24” from the ceiling.
- Use only Scent Better diffuser blends; other oils may contain fragrances, base oils or synthetics that could result in malfunction. Some single note essential oils are also too thick or heavy for use in the ultrasonic diffuser. See FAQs for more information.
- In case of smoke, unusual scent, loud noise, or other malfunction, unplug the unit immediately and discontinue use. Further use may result in fire or electric shock.
- Do not immerse the unit in water.
- Always keep unit out of reach of small children and pets.
- Store at 0°C - 50°C (32°F - 122°F) and 5% - 95% humidity.

**CAUTION:** Always be aware of where you place the SB-3000. Make sure it cannot be tipped over as that may cause some aroma oil to leak out. Keep out of reach of children. Avoid getting aroma oil liquid in contact with wood or other delicate surfaces.

**NOTE:** Do not place the SB-3000 near an HVAC return grill, exhaust fan or vent, open door or window as that will cause the scent to escape the space. Remember you want to work with the natural airflow, not against it.

**IMPORTANT:** Keep nose clear of fragrance output when the device is operating. Instead, wave air towards nose to experience fragrance.

**TIP:** As a rough estimate, start with level 1 and go up from there. When you change a scent level, give the SB-3000 some time to equalize the scent level throughout the space before you decide if you need to adjust further.