



[www.scentbetter.com](http://www.scentbetter.com)

## SB-1500 Bluetooth Essential Oil Nebulizing Diffuser



# PRODUCT MANUAL



## IMPORTANT

Please comply with the following for safety reasons.

---



Do not modify or disassemble the scent machine without first consulting Scent Better.

In case of product failure please contact us.

---



Do not use the power cord if it is damaged, kinked or cut. It's a fire hazard.

---



To avoid electrical shock, do not touch the power adaptor or the machine while plugged into the electrical socket during a thunderstorm or lightning.

---



Do not dismantle or try to repair the machine while its plugged into an electrical outlet, or in operation.

---

## CONTENTS

DISCOVER THE POWER OF SCENTING! .....	3
FEATURES .....	3
TECHNOLOGY .....	4
SPECIFICATIONS .....	5
DIAGRAM OF PARTS .....	6
ACCESSORIES .....	6
WHERE TO PLACE THE DIFFUSER .....	7
INSTALLATION INSTRUCTIONS .....	8
HVAC INSTALLATION .....	10
CONNECTING TO BLUETOOTH.....	15
AROMA OIL CONSUMPTION.....	17
INTENSITY AND CONSUMPTION.....	18
MAINTENANCE.....	19
TROUBLESHOOTING.....	20
CAUTIONS.....	21

## DISCOVER THE POWER OF SCENTING!

Scent is a fantastic way to express yourself, reduce stress, enhance happiness, give your memory a boost, increase your energy, sleep better, and uncover a host of other benefits. The SB-1500 BT will change the way you think about scents and reveal a multitude uses in your home or business. Simply add your favorite Scent Better scents and transform your space into whatever you need it to be. The SB-1500 BT allows you to easily tailor your scent experience to your preferences and your space. With unique cold-air diffusion technology, this diffuser scents your environment subtly and consistently while preserving the quality of your 100% Essential or Aroma Oils.

Its sleek design and modern aesthetic look will help you make any space more inviting and vibrant.

## FEATURES

- Control manually or through Scent Better Bluetooth.
- Scents 1,500 square feet of space
- Heat-free cold-air diffusion technology that subtly disperses essential oils into the air
- Connects to HVAC / AC
- Wall mount or stand-alone
- Adjustable fragrance intensity and hours of operation
- Quiet and energy efficient
- Eco-friendly and made from recycled aluminum
- No water or heat required
- Leaves no residue

## TECHNOLOGY

The SB-1500 BT uses nebulization (cold-air diffusion) technology to diffuse our aroma oil blends, this is a process that breaks down the oils into a very fine, dry mist. Nebulization preserves the intention and integrity behind our oils while maximizing their olfactive and therapeutic powers, without diluting in water, solvent, or using heat.

This patented nebulizing technology, combined with our Essential and Aroma Oil blends, produces nanoparticles that suspend in the air for several hours, creating a clean and consistent ambient scent without chemical undertones.

Cold-air diffusers support healthy indoor air quality while providing an improved ambiance for you and your loved ones.

Diffusing helps to reduce dust, pet dander allergens, and other airborne allergens from non-living matter (e.g. dust mite matter allergens), while Scent Better's 100% all natural diffuser blends bring nature's goodness into your space, supporting harmony and balance.

Using only Scent Better essential and aroma oil blends will guarantee the best performance of your diffuser. No mixing or diluting with water, carrier oils or alcohol is required. Simply fill the bottle with what nature created and enjoy!

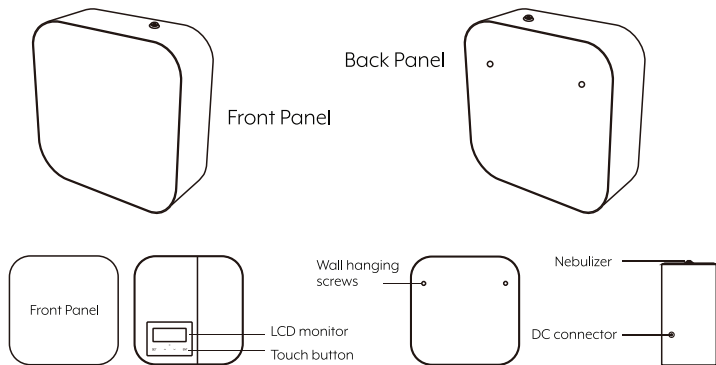
## SPECIFICATIONS

---

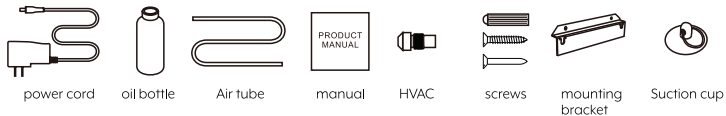
[ Model ]	SB-1500 BT
[ Dimension ]	205x205x88mm / 3.4"x2.5"x8.4"
[ Machine N.W. ]	2.85kg / 11oz
[ Voltage ]	Input: AC100V-240V 50/60Hz Output: DC12V 1A
[ Technology ]	Twin-fluid atomization technology
[ Power ]	6W
[ Coverage ]	150 sq.m / 1,500 sq.ft.
[ Bottle capacity ]	400ml
[ Material ]	Machine: Iron, acrylic Bottle: PET
[ Accessories ]	Power adapter, Bottle, Manual, PU tube, HVAC Adaptor, Silencer, Nails, Screws, Mounting bracket, PTFE tape.

---

## DIAGRAM OF PARTS



## ACCESSORIES



Ensure all parts are present in the box. If any parts are missing please contact us.

## WHERE TO PLACE THE DIFFUSER

**Applications:** aromatherapy, ambient scenting and odor control in home or business.

**Location:** The SB-I500 BT is designed to be used as a table-top, wall mounted or connected to HVAC.

**Scenting Coverage:** SB-I500 BT can be adjusted to scent an area ranging from 100 to 1,500 sq.ft. (10 to 150 sq.m)

**Scent Intensity:** Adjust your scenting experience and hours of operation using the internal touch LCD timer.

**Device Location:** The most important element of your scenting experience is to properly position the device in the room, to ensure optimal performance and control.

### Location Suggestions

- Choose a location where the aroma oil molecules can use the natural airflow in a room. This is particularly important with air-conditioned spaces. The best location for the SB-I500 BT is where there is a lot of airflow.
- If you are not sure of the direction of the airflow, simply turn on the SB-I500 BT and using a flashlight, point at the scent output and watch where the scent travels. Alternatively, light a match and blow it out immediately. The direction of the scent or smoke will tell you which way the fragrance will travel.
- The SB-I500 BT is a luxurious and aesthetically beautiful device. Always keep it in an open area and do not hide it behind or under pieces of furniture.
- Try a variety of locations and settings until you are happy with the scent coverage. Give the SB-I500 BT a little time to adjust to the new location and setting before changing it again.



## INSTALLATION INSTRUCTIONS

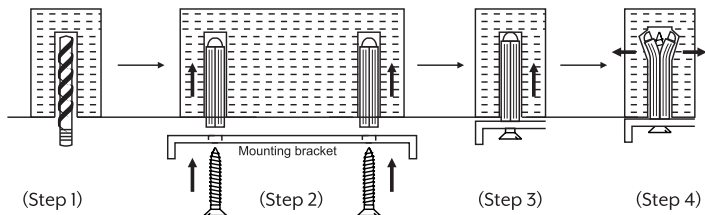
SB-1500 BT can be used as a portable device, wall mounted or connected to your HVAC unit. If you are wall mounting or connecting the SB-1500 BT to the HVAC, please follow the below instructions. If you are using the device as a free-standing unit, please go to page 15 to set up the timer.

### Parts and Tools Required

You will require the following tools to wall mount or connect the SB-1500 BT to your HVAC. No tools are required for stand alone installation.

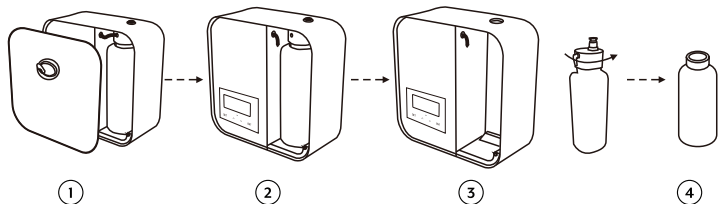
1. A level, to ensure the wall mount bracket is exactly horizontal.
2. A hammer, for the dry wall anchors.
3. A Philips screwdriver, to match the screws provided or any other screwdriver that matches the screws to attach to the anchors you have selected.
4. Drill and drill bit to drill an opening in the duct for the air tube.

### Mounting Wall Bracket



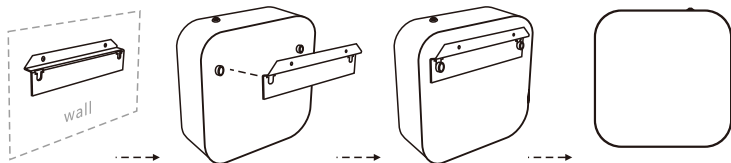
1. Using drill bit, make a hole in the drywall the size of the plug.
2. Insert the drywall plug. If necessary, tap lightly with a hammer to fully insert the plug.
3. Screw the bracket to the wall, aligning with drywall plugs.

### Bottle installation steps:



1. Use the suction cup to remove the front cover.
2. Remove the air tube from the atomizing head.
3. Hold the lower part of the bottle, pull out the atomizer head and bottle slowly and carefully. (Note: both atomizing head and bottle will separate from the machine)
4. Unscrew the bottle and fill with the fragrance.

### Wall mounting:



Use screws to fix the mounting bracket to the wall first, hanging the machine on the bracket next.

1. Always make sure the SB-1500 BT is mounted straight up.
2. Attach the wall bracket using all the supplied screws or nails (depending on the surface).
3. Hang the machine on its hinges.

## HVAC INSTALLATION

### HVAC Pre-installation Checklist

Please complete this checklist prior to installing the scent diffuser.

1. Confirm the area to be scented.
2. Locate the Air Handling Unit or duct that serves the area to be scented.
3. Make sure the Air Handling Unit does not use an open gas flame.
4. Locate and mark the optimal position for the Scent Introduction Point. (See FIG A page 13)
5. Locate and mark the exact location for placement of the scent diffuser. (See FIG A page 13)
6. Confirm the distance between the Scent Introduction Point and the proposed scent diffuser location. (Air tube should be max. 3 feet. Avoid dips and coils or lows in the air tube. The Scent Introduction Point should ALWAYS be higher than the scent diffuser).
7. Locate and install 110 or 220V AC power outlet close to the diffuser install location. Avoid placing the power outlet directly under the scent diffuser.

### Scent Diffuser Positioning

It is important to locate an insertion point where the scent output will be smoothly drawn into and mixed with the airflow. This usually means those parts of the AHU where the static pressure is negative.

#### Ideal locations:

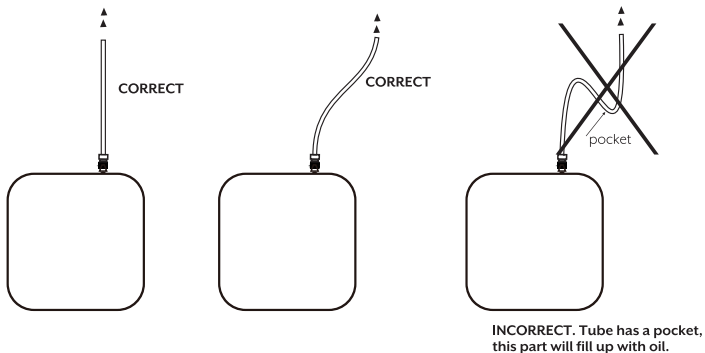
- Before the supply fan with injection through the wall of the AHU. Positioning immediately before the fan and after the coils if possible, or in the mixed air chamber.
- Behind the blower with the entire scent diffuser mounted inside the AHU in the mixed air chamber.
- Outside the AHU in the Supply Air duct.

Best practice when installing in an AHU is to place the air tube after the heating and cooling coils. If this is not possible, the scent output can pass over hot water, steam, chilled water, and DX coils.

**Open gas flames should absolutely be avoided. If installation must be over gas heated coils or open gas flames, contact Scent Better Technical Support.**

The best location for the device is below the Scent Point. The air tube should run upward as short a distance as possible and **never more than 3 feet**. If an upward air tube run is not possible, care should be taken to support the hose to prevent sagging or any low spots in the run to avoid any possibility of condensation and liquid collection which will block the scent output. Give the air tube an upward slant along its run. (See below).

### Tube Connection to the Air Duct



## Connecting the Diffuser to HVAC.

Refer to the SB-1500 BT HVAC Connection Diagram (FIG A).

The SB-1500 BT is a versatile and powerful commercial scent diffuser. If you decide to connect it to your HVAC system, follow the below steps. Diffusing the scent via HVAC will allow you to cover multiple rooms and zones. To scent the right zones, check with your HVAC provider or Mechanical Engineer to determine which HVAC unit to connect to.

The SB-1500 can scent spaces of 100-1,500 sq.ft. If your space is larger than 1,500 you will require a larger scent diffuser.

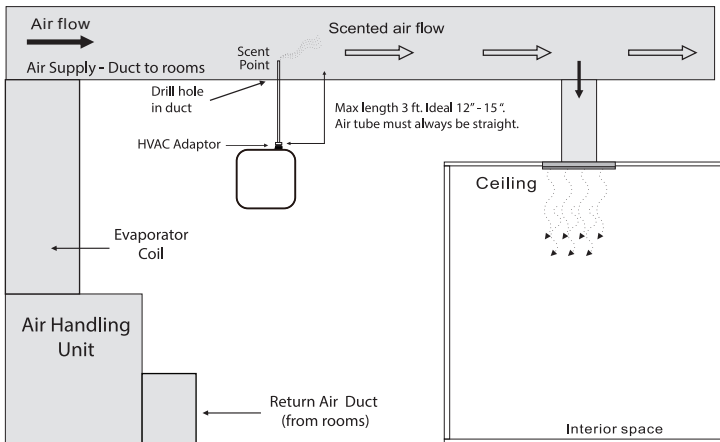
**NOTE:** The SB-1500 BT can cover 1,500 sq.ft. of space.

1. You will want to choose the air handler you want to connect to. If you have multiple air handlers, select the one that will cover the area you wish to be scented. Consult your HVAC supplier if needed.
2. With a metal drill bit designed to drill through sheet metal, drill a 16mm or 5/8" hole in the air duct directly after the blower. Make sure you are tapping into the supply side of your duct, not the return side. This opening is called a Scent Introduction Point.
3. **IMPORTANT:** Never install before the coils or filters as the filters will dilute the scent and you will not get an inferior result.
4. Once the hole is made, insert an air tube. When inserting an air tube point it with the airflow, not against it. Pointing the tube into the airflow will block the scent output. This will allow the scent to travel in the same direction as the air flow.
5. Take the HVAC adaptor and screw it into the SB-1500 BT.
6. Either wall mount the SB-1500 BT to the duct, the wall or place on a shelf directly under the Scent Point connection. It's important to keep the SB-1500 BT as close as possible to the scent point. **Max air tube length should be 3 feet.**
7. Cut supplied air tube to required length to go from the SB-1500 BT to the duct. The distance between the SB-1500 BT and Scent Point should be as short as possible.

**Air tube length should be between 6-36" max.** Do not leave any slack. Coiling or excess air tube will create air pockets and buildup of scent inside the tube.

8. Connect the SB-1500 BT to the 110V-240V plug and set the timer.

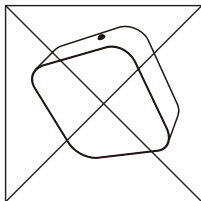
### SB-1500 BT HVAC Connection Diagram (Figure A)



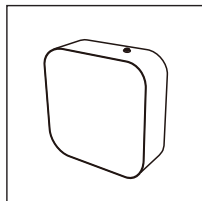
**IMPORTANT:** Do not drill through a coil, or before the filters.

**Warning:**

After installation, please keep the machine vertical. Tilting or placing it flat may cause an oil overflow. If the SB-1500 is tilted, the oil will over flow inside and may potentially damage the machine.



**WRONG**



**CORRECT**

## CONNECTING TO BLUETOOTH

Please download and install our Scenting App from the App Store to continue.

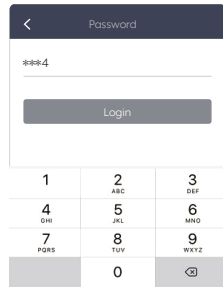
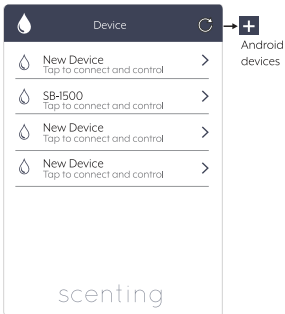
**STEP 1** Plug your SB-1500 into an electrical outlet

**STEP 4** The default password is **1234**

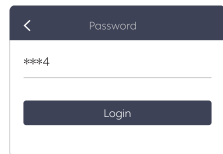
**STEP 2** Open the Scenting App



**STEP 3** Find the SB-1500 on the list of available Bluetooth devices.



**STEP 5** After you enter the password, press **Login**





**STEP 6**

Adjust schedule as desired

Diffuser control Save

Settings About

Name: SB-500 BT → Device Name

Location: Living Room → Notes

Diffusing Schedule + → Add working period

7:30 - 20:30 Intensity: 5 ON/OFF → ON/OFF

00:30 - 08:30 Intensity: 8 ON/OFF

Using this page you may change the schedule, add multiple start and stop times and change days of operation.

You can set up to 5 ON/OFF events. Please tap **Save** to lock the settings before exiting.

**STEP 7**

Adjust schedule as desired

Diffusing Schedule Save

ON time OFF time

05 28 05 28  
06 29 06 29  
07 30 07 30  
08 31 08 31

Slide up or down to adjust

Set Days

Sun Mon Tue Wed Thur Fri Sat → Activated day of the week

Intensity to adjust - 5 + → Select grade (from 1 through 20)

Custom

Start working time Stop working time

1 5  
2 6  
3 7  
4 8

Slide here to adjust working and pause seconds

### Recommended Intensity Settings.

The grading system starts from 1 (being the lowest) and ends with 20 (being the highest). Short but frequent bursts are recommended. Using the lower settings will allow for a subtler scenting experience, without being over powering. Intensity setting is personal and depends on multiple factors, such as air flow, the location of the scent machine and how subtle or strong you want the scent to be. Use your discretion and start out at Grade 1 and work your way up if needed.

To test whether the intensity is too strong or too light, leave the scented area for at least 5 minutes and re-enter after getting some fresh air. Only then will you be able to tell if the intensity grade needs to be adjusted up or down.

Please note that the human nose gets used to a fragrance after 30 minutes of exposure. If at any point during the diffusion process you don't smell the scent anymore, simply leave the scented area and reenter after getting some fresh air.

### AROMA OIL CONSUMPTION

	SB-1500 BT (400ml)									
Consumption(ml/h)	G1	G2	G3	G4	G5	G6	G7	G8	G9	G10
	0.15	0.30	0.46	0.61	0.75	0.91	1.05	1.21	1.36	1.51
	G11	G12	G13	G14	G15	G16	G17	G18	G19	G20
	1.66	1.81	1.96	2.11	2.25	2.41	2.55	2.71	2.86	3.02

- Note:**
1. Above data is based on using Scent Better aroma oil.
  2. Using another type of oil may affect the consumption rate.
  3. Note that some 100% pure essential oils tend to diffuse a lot faster.

## INTENSITY AND CONSUMPTION

### Intensity Level and Time Cycle

Using the UP ▲ or DOWN ▼ button allows you to control the intensity of the fragrance output.

Grade	ON (seconds)	OFF (seconds)
G1	15s	300s
G2	15s	150s
G3	20s	120s
G4	20s	85s
G5	25s	80s
G6	30s	75s
G7	30s	60s
G8	30s	50s
G9	30s	40s
G10	30s	33s
G11	33s	30s
G12	40s	30s
G13	50s	30s
G14	60s	30s
G15	75s	30s
G16	80s	25s
G17	85s	20s
G18	120s	20s
G19	150s	15s
G20	300s	15s

## MAINTENANCE

### Machine cleaning:

1. We recommend cleaning the SB-1500 BT every 2 months.
2. When changing oil, clean out the diffuser.
3. If scent diffusion becomes weak, cleaning is recommended.

### Cleaning steps:

1. Empty the oil from a canister and replace with 20ml of rubbing alcohol.
2. Screw the bottle into the diffuser and turn the machine ON for 20 minutes to clean out the diffuser head and tube.
3. Pour out the rubbing alcohol (no rinsing required) and replace with your favorite aroma oil blend.

### Tips:

You can start using the scent machine immediately after cleaning it. There is no need to wash the tube.

### IMPORTANT

- After installation make sure scent diffuser is *always* vertical and not tilted or on its side.
- When the machine is on pause and not diffusing the atomization icon will be displayed.

## TROUBLESHOOTING

Before submitting a warranty claim, please try the below steps to diagnose the problem and fix the issue. For warranty information, please contact Scent Better at +1.866.216.6681 or send us an email at [help@scentbetter.com](mailto:help@scentbetter.com)

<b>Problem</b>	<b>Solution</b>
No diffusion	<ul style="list-style-type: none"><li>- Check if the power is ON or OFF.</li><li>- Check whether the pump is damaged and needs replacing.</li><li>- If there is no diffusion or it is weak, replace the oil with rubbing alcohol and run it through the machine for 5 min.</li></ul>
Little or no spray coming out	<ul style="list-style-type: none"><li>- Atomization head is blocked. Clean diffuser by running rubbing alcohol through it. Or replace diffuser core.</li><li>- Diffuser core with straw is missing or damaged. Replace with a new one.</li><li>- Pump is damaged and may need replacing.</li></ul>
Diffuser spraying liquid	<ul style="list-style-type: none"><li>- Diffuser core is damaged. Replace diffuser core.</li><li>- Machine is tilted or angled. Make sure it's upright at all times.</li></ul>
Oil leaking	<ul style="list-style-type: none"><li>- Bottle is loose. Screw it in, ensuring it is straight.</li><li>- Seal is broken or missing. Replace the supplied seal that came with the machine.</li></ul>
Abnormal sound	<ul style="list-style-type: none"><li>- Pump is loose or damaged. Tighten the pump or replace it.</li></ul>
Forgot or lost password.	<ul style="list-style-type: none"><li>- Use factory default password 1234.</li></ul>

## CAUTIONS

- Only use the power adapter supplied with the device.
- Never operate the diffuser if the power adapter is damaged.
- Do not use the diffuser if any part of the device is broken.
- To reduce the risk of electric shock, do not attempt to service the device in any way other than as described in the “Care & Maintenance” section of this manual.
- Do not disassemble or attempt to repair the diffuser; in the event of a problem, please contact us at +1.866.216.6681 or email [help@scentbetter.com](mailto:help@scentbetter.com)
- When moving the device, always keep it upright and secure, using both hands.
- Always place the unit on a stable, level surface, i.e. a shelf or table.
- Do not plug the unit into the wall socket with wet hands
- Do not pour water or other liquids into the bottle with aroma oil.
- Do not tilt, move, or attempt to empty or refill unit while in operation.
- To prevent clogging of the diffuser, run rubbing alcohol through once a month for 15 min.
- Always turn off and unplug the device during maintenance, or when not in use.
- Ensure that the power adapter is not covered or blocked when plugged in; it must be able to dissipate heat properly.
- Do not cover the diffuser with objects or material while in use.
- Keep the device at least 24" from the ceiling.
- Use only Scent Better diffuser blends; other oils may contain fragrances, base oils or synthetics that could result in malfunction. Some single note essential oils are also too thick or heavy for use in the ultrasonic diffuser. See FAQs for more information.
- In case of smoke, unusual scent, loud noise, or other malfunction, unplug the unit immediately and discontinue use. Further use may result in fire or electric shock.
- Do not immerse the unit in water.
- Always keep unit out of reach of small children and pets.
- Store at 0°C - 50°C (32°F - 122°F) and 5% - 95% humidity.

**CAUTION:** Always be aware of where you place the SB-1500. Make sure it cannot be tipped over as that may cause some aroma oil to leak out. Keep out of reach of children. Avoid getting aroma oil liquid in contact with wood or other delicate surfaces.

**NOTE:** Do not place the SB-1500 BT near an HVAC return grill, exhaust fan or vent, open door or window as that will cause the scent to escape the space. Remember you want to work with the natural airflow, not against it.

**IMPORTANT:** Keep nose clear of fragrance output when the device is operating. Instead, wave air towards nose to experience fragrance.

**TIP:** As a rough estimate, start with level 1 and go up from there. When you change a scent level, give the SB-1500 BT some time to equalize the scent level throughout the space before you decide if you need to adjust further.

