

SB-100

car & room aroma diffuser 



Product: SB-100

Dimension: 70x133mm / 2.8"x5.2"

Input Voltage: 5V

Power: 1.5W

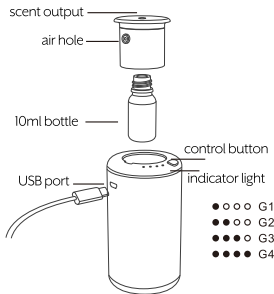
Bottle Capacity: 10 ml

G.W.: 220gr / 8 oz

Consumption: 0.02-0.10ml/h

Coverage: 10m² / 110 sq.ft

What's inside:



Diffuser



10ml bottle



USB cable



Manual

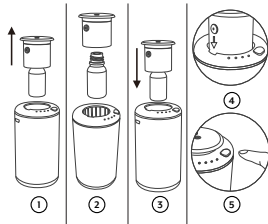
How to operate the SB-100:

Step 1. Pull up on the nozzle with the 10 ml bottle.

Step 2. Unscrew the empty bottle, replace with your favorite 10ml bottle of scent.

***Please note not all 10ml bottles fit the SB-100.**

Step 3. Screw the bottle into the diffuser. Do not over-tighten. Make sure it's snug and straight.



Step 4. Insert the nozzle (with the bottle) into the base of the diffuser. Make sure the air hole on the diffuser nozzle and the base of the diffuser align.

Step 5. Press the Power/Control button to turn the diffuser ON or OFF.

How to operate the SB-100:

There are 4 intensity grades on the SB-100. Grade 1 is the lowest and Grade 4 is the highest. Use your discretion as to the amount of scent you want to diffuse. Simply press the control button to increase or decrease the scent intensity.



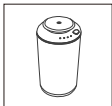
Diagram of Start and Stop time.

Grade	RUN TIME (seconds)	PAUSE TIME (seconds)
G1	5	360
G2	5	180
G3	10	120
G4	10	60

Handling the SB-100:

WARNING

After installation, please keep the machine vertical. Tilting or placing it flat may cause oil to overflow. If the SB-100 is tilted, the oil will over flow inside and may damage the machine.



CORRECT



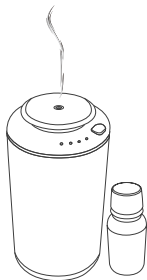
WRONG

Please ensure the SB-100 is always kept in the upright position. If tilted oil may spill inside the device or the surface it's on.



www.scentbetter.com

PRODUCT MANUAL



SB-100

car & room aroma diffuser 

www.scentbetter.com