

# Teleflex Marine Mechanical Steering

## *Steering Connection Kits Overview:*

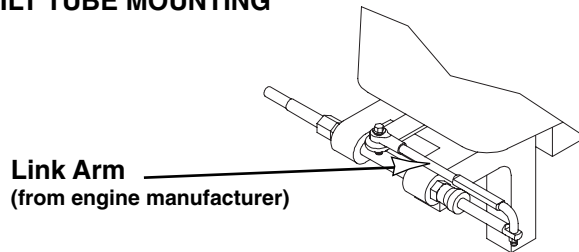
There are four basic types of connections for mechanical steering.

### *Tilt Tube Mount*

This is the most popular steering cable-to-engine connection method for outboards with an ABYC standard tilt tube. This installation requires the use of a link arm which can be purchased from the engine manufacturer.

**Parts Required: Engine Manufacturer's Link Arm**

#### TILT TUBE MOUNTING



### *Transom Support Mount*

This cable connection is used for older model outboards without tilt tubes, low HP outboards or applications where transom design interferes with standard tilt tube mounting.

**Parts Required: D, G & H**

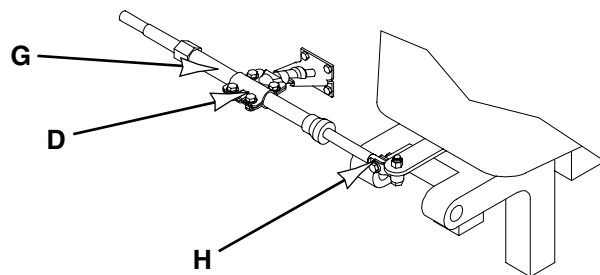
**Master Kits (Include D, G & H):**

*Stainless Steel Transom Mount Kit SA27255P or*

*Corrosion Resistant Transom Mount Kit SA27256P*

*(See following pages for individual components.)*

#### TRANSOM SUPPORT MOUNTING



### *Splashwell Mount*

This cable connection is used on boats where standard tilt tube or transom support mounting methods are precluded by a splashwell box or lack of engine tilt tube. The mounting surface is usually near perpendicular to the transom and between 12 and 16 inches from the center line of the boat and/or tiller (25-33" total splashwell width).

**Parts Required: B, H (90°) or A, H (15°)**

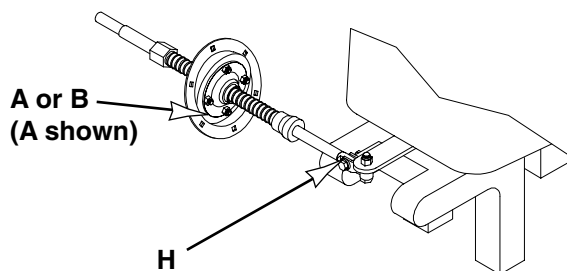
**Master Kits (Include H & A/B):**

*90° Splashwell Mount Kit SA27254P or*

*15° Splashwell Mount Kit SA27253P*

*(See following pages for individual components.)*

#### SPLASHWELL MOUNTING



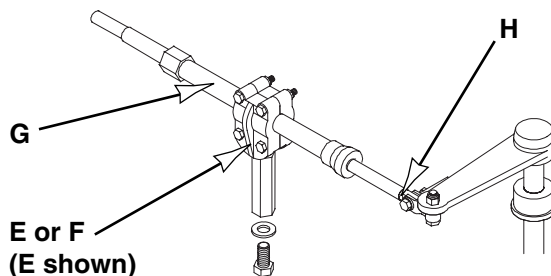
### *Inboard Stringer Support Mount*

This connection is used on inboards and is attached to a stringer or suitable mounting bracket below deck. The cable is perpendicular to the centered tiller and in half stroke for proper operation. An additional bracket may be needed to support the ball post. Available in heavy duty "Ski Boat" versions, with either long (4.5") or short (2.25") post standoff.

**Parts Required: E,G,H (long post) or  
F,G,H (short post)**

*(See following pages for individual components.)*

#### INBOARD STRINGER SUPPORT MOUNTING



connection kits for cable to engine and cable to helm

# Teleflex Steering Connection Kits:

**NOTE: Parts shown on this page are available in kit form ONLY.**

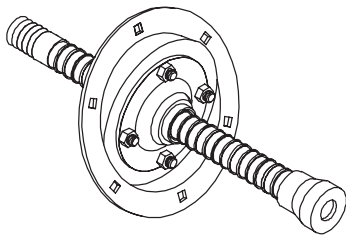
**A**

**SPLASHWELL  
MOUNT KIT  
15° Corrosion  
Resistant**

**SA27253P**

(NOTE: OUTER RING NOT SOLD SEPARATELY)

(BOOT ONLY P/N: SA37868P)

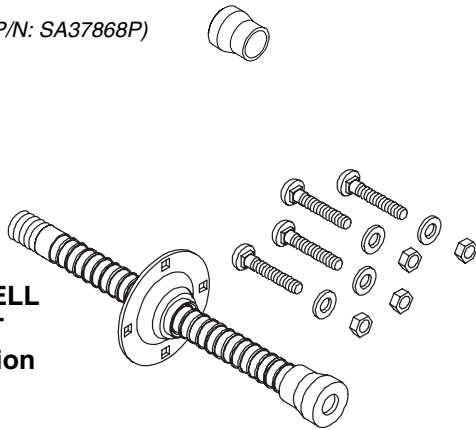


**B**

**SPLASHWELL  
MOUNT KIT  
90° Corrosion  
Resistant**

**SA27254P**

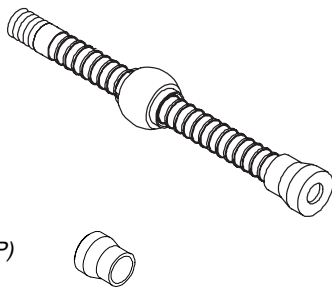
(BOOT ONLY P/N: SA37868P)



**C**

**SPLASHWELL  
THREADED  
TUBE WITH BALL  
Corrosion Resistant  
SA36316P**

(BOOT ONLY P/N: SA37868P)

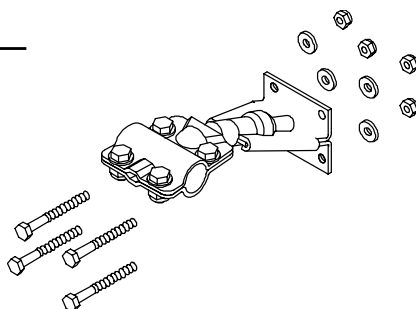


**D**

**CLAMP BLOCK —  
OUTBOARD**

**Stainless Steel  
SA27149P**

**Corrosion  
Resistant  
SA27055P**

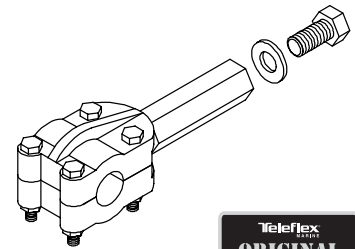


**E**

**CLAMP BLOCK —  
SKI BOAT INBOARD  
4-1/2" Stand-Off**

**SA27579P**

(Heavy Duty with  
Black Metal Flake Finish)

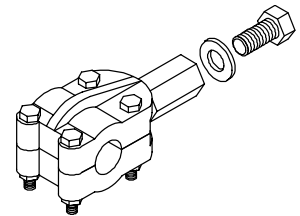


**F**

**CLAMP BLOCK —  
SKI BOAT INBOARD  
2-1/4" Stand-Off**

**SA27578P**

(Heavy Duty with  
Black Metal Flake Finish)

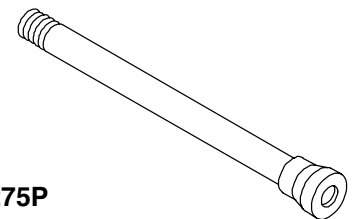


**G**

**SUPPORT TUBE**

**Aluminum SA27274P**

**Stainless Steel SA27275P**



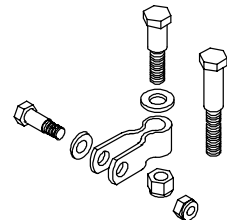
**H**

**CLEVIS KIT —  
STAINLESS STEEL**

**With Short Bolt SA27314P**

**With Long Bolt SA27329P**

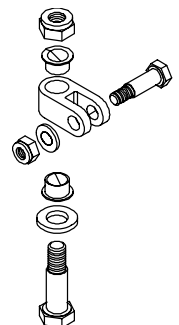
NOTE: SA27313P Bushing should be ordered with SA27329P.



**CLEVIS KIT — SKI BOAT  
(STAINLESS STEEL)**

**With Short Bolt  
SA27576P**

**With Long Bolt  
SA27577P**



# Teleflex Marine Mechanical Steering

## *Teleflex Steering Connection Kits:*

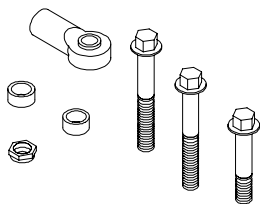
**NOTE: Parts shown on this page are available in kit form ONLY.**

**I**

**ROD END KIT  
(1/2-20 THD.)**

**Steel SA27276P**

**Stainless Steel SA27277P**

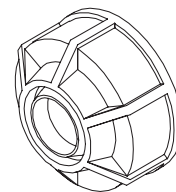


**O**

**CABLE GARD  
For Most  
Outboards  
with Tilt Tube**

**SA39329P**

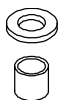
*(Helps to keep the tilt tube clean.)*



**J**

**BUSHING KIT —  
INBOARD TILLER ARM**

**SA27313P**

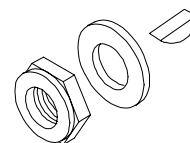


**P**

**STEERING WHEEL  
HARDWARE KIT**

**2745417P**

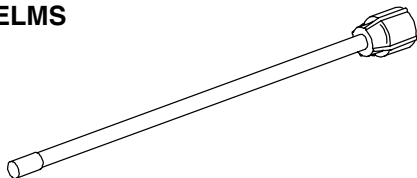
*(For All Teleflex Mechanical Helms  
with standard marine round 3/4" Tapered Shaft.)*



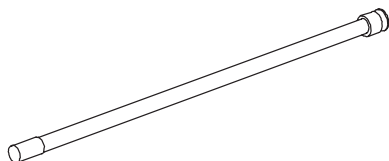
**M**

**SPENT TRAVEL TUBES  
FOR ROTARY HELMS**

**SAFE-T QC/  
SAFE-T "TS"/  
BIG-T Helms  
SA35680P**



**NFB 4.2 /  
NFB SAFE-T II /  
HPS Rotary Helms  
SA38603P**

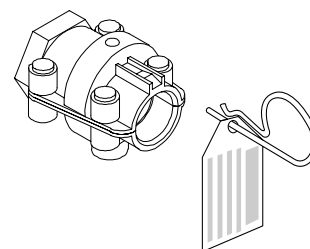


**Q**

**QC II HELM  
CONVERTER  
For Helms  
with Threaded  
Spigots**

**SA27620P**

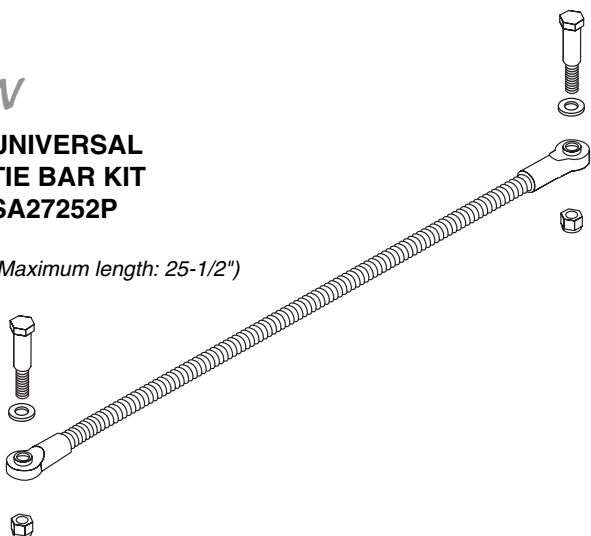
*(Upgrades older Teleflex rotary helms to Quick-Connect cable  
interface, allowing use of SSC61/SSC62 QC cables.)*



**N**

**UNIVERSAL  
TIE BAR KIT  
SA27252P**

*(Maximum length: 25-1/2")*

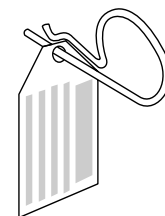


**R**

**HITCH PIN & TAG FOR  
QUICK CONNECT HELM  
AND QC II HELM CONVERTER**

**2724514P**

*(Replacement hitch pin for all Teleflex helms with the Quick  
Connect cable attachment port and for all Teleflex SA27620P  
QC II Helm Converters.)*



connection kits for cable to engine and cable to helm

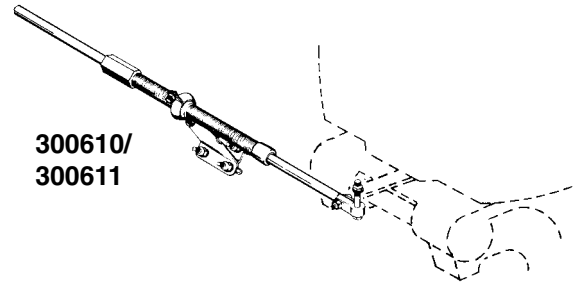
# Morse Steering Connection Kits:

**NOTE: Parts shown on this page are available in kit form ONLY.**

**SUPPORT TUBE**  
(Aluminum) 064480

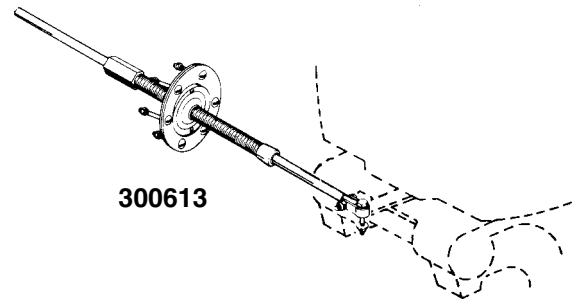


**FRONT HOOKUP,  
OUTBOARD TRANSOM MOUNT**  
(Galvanized) 300610  
(Stainless Steel) 300611

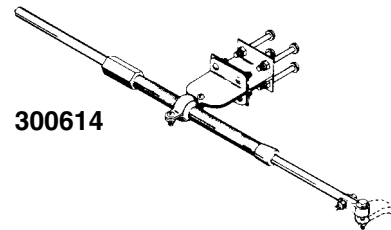


**ADAPTER BRACKET**  
for Johnson/Evinrude 40 hp and under  
(not pictured)  
300612  
(See also Teleflex outboard clamp block kits on preceding pages.)

**FRONT HOOKUP,  
OUTBOARD SPLASHWELL MOUNT**  
300613  
(See also Teleflex splashwell mount kits on preceding pages.)

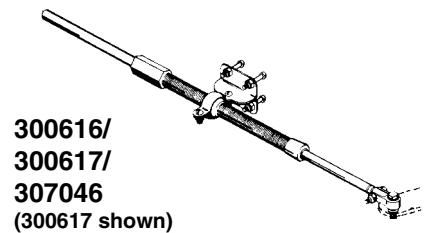


**HOOKUP, INBOARD TRANSOM MOUNT**  
for Volvo, 1977 and earlier  
300614



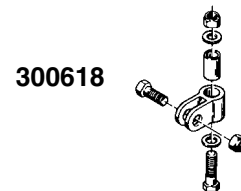
**HOOKUP, INBOARD STAND-OFF**  
Tall Bracket  
300616

**HOOKUP, INBOARD STAND-OFF**  
Short Bracket 2"  
300617



**Short Bracket 2" (Stainless Steel)**  
307046  
(See also Teleflex ski boat inboard clamp block kits on preceding pages.)

**SWIVEL ASSEMBLY ONLY**  
300618  
(See also Teleflex ski boat clevis kit on preceding pages.)



**COMMAND 290 HELM CONVERTER**  
(replaces 300959)  
3924516P  
(Adapts Teleflex SSC72 [threaded helm nut] or SSC61 [QC II] steering cables for use with Morse Command 290 helms that require a through-bolt [not threaded nut] type cable connection.)



*See Previous Pages for Teleflex Steering Connection Kits.*