

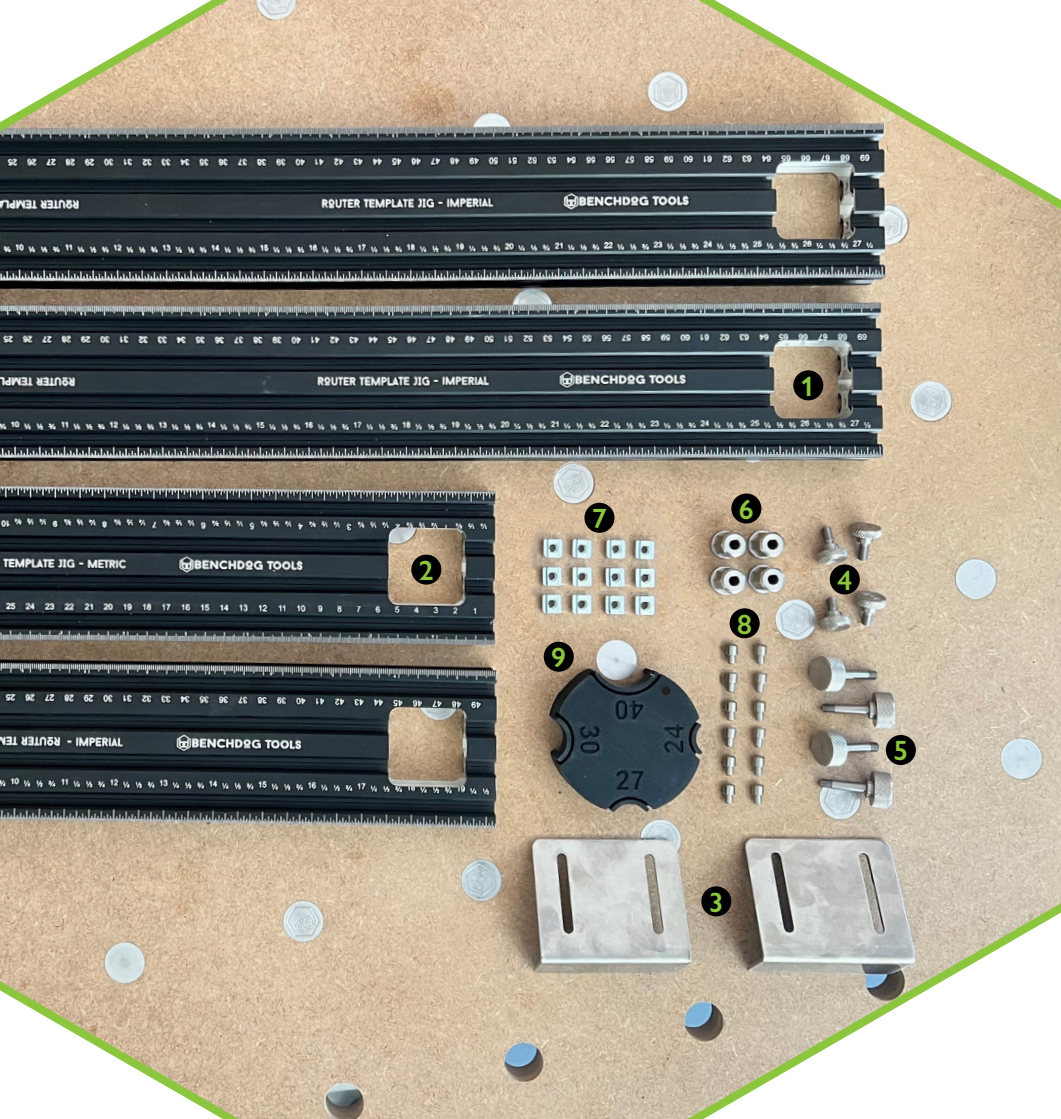


INSTRUCTION MANUAL
Router Template Jig

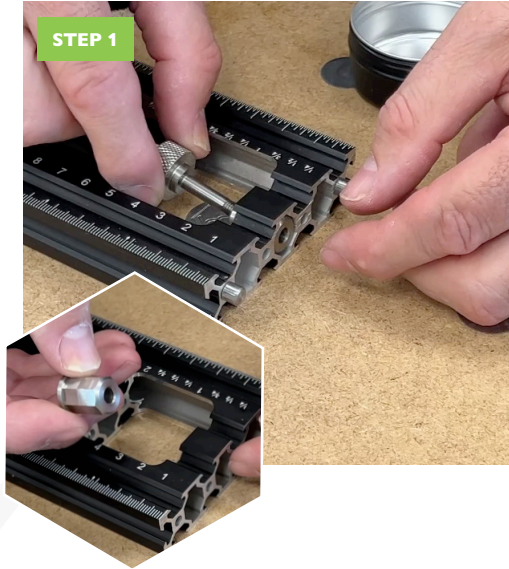
BENCHDOG TOOLS

WHAT'S IN THE KIT

1. 700MM OR 1000MM EXTRUSION 2X ◀
2. 500MM OR 700MM EXTRUSION 2X ◀
3. ANGLE STOPS 2X ◀
4. THUMSCREWS (FOR ANGLE STOPS) 4X ◀
5. THUMBSCREW 4X ◀
6. S.STEEL BUSHINGS 4X ◀
7. T-NUTS 12X ◀
8. ANTI-ROTATING PINS 12X ◀
9. ANTI-TIPPING MAGNETIC PUCK ◀

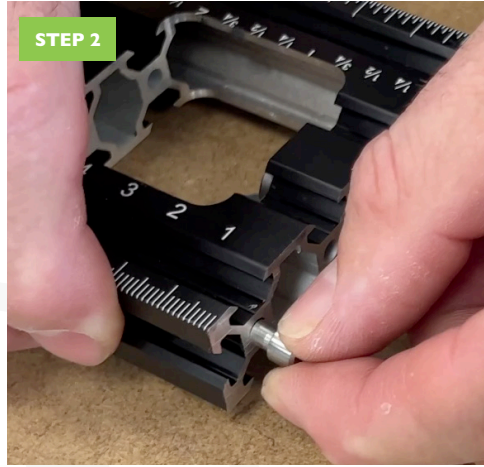


STEP 1



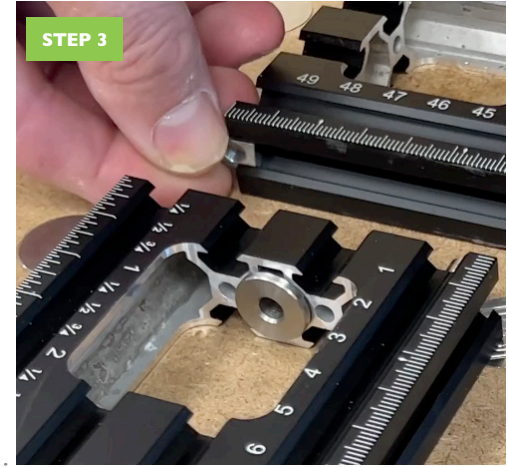
Take the bushings and rotate them until they fit inside the hole of the extrusion and replicate this on all 4 of the extrusions.

STEP 2



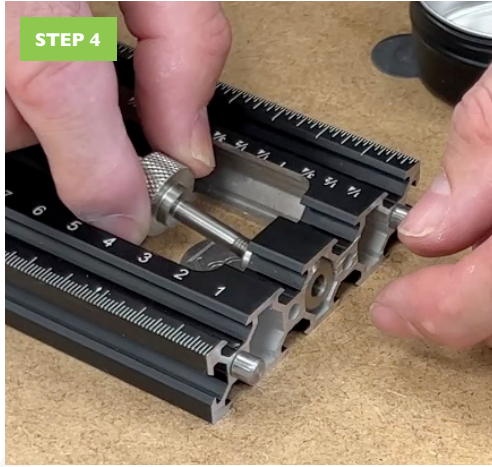
Using the anti-rotating pins, plug these into the holes on both sides of the extrusion.

STEP 3



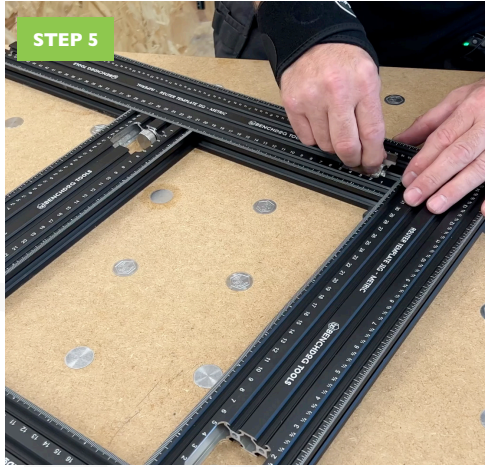
Slide in a T-Nut down the extrusion and align it up with the bush.

STEP 4



Take a thumbscrew and place it in and through the bush, fixing it into the T-Nut and lock this into place. Apply this on all 4 of the extrusions.

STEP 5



Once all extrusions have been fixed into place, you can then move these about to your desired size.

STEP 6



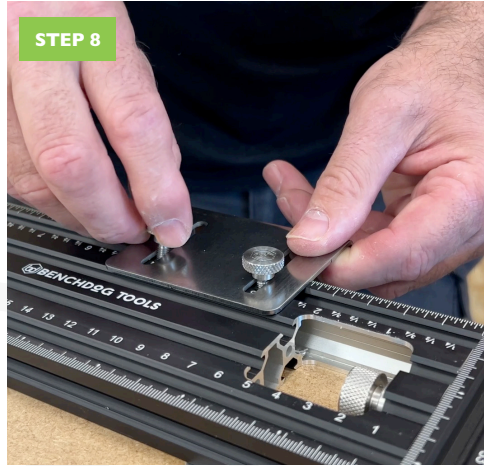
Slide 2 T-Nuts into the extrusion where you require them.

STEP 7



Using the angle stop, bring the router to the edge of the table and then apply the thumbscrews.

STEP 8



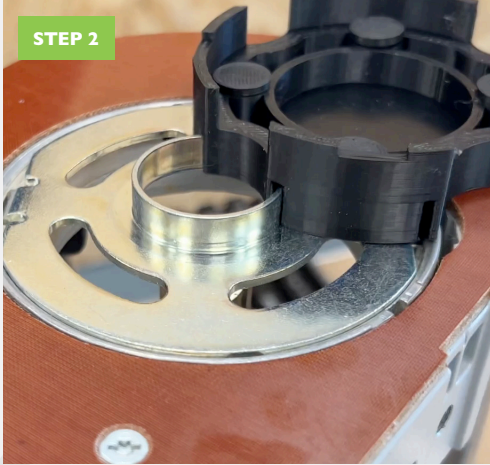
Once you have the angle stop attached to the jig you can slide the angle stop up and down to where you want the stops to be, and then tighten them down giving you a nice and straight reference edge.

STEP 1



Turn your router upside down and select the guide bush that you need, whether it is 24,27,30 or 40mm.

STEP 2



The magnetic puck will snap into place

STEP 3



When you are routing, the puck will slide around on the router and make sure that this does not tip.

WATCH OUR VIDEO ON HOW TO
USE THE TEMPLATE JIG HERE...



SCAN THE QR CODE





BENCHDOG TOOLS

Bringing precision to your work



WWW.BENCHDOGS.CO.UK

MADE IN BRITAIN