



---

INSTRUCTION MANUAL  
**Rail Square**

**BENCHDOGS**



## INSTRUCTIONS FOR

90° angle cuts ◀

45° angle cuts ◀

Bevel-edged cuts ◀

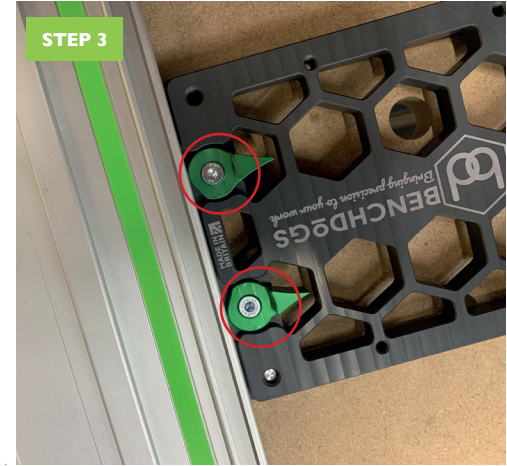
Using the b-collars ◀



Screw the MFT grooved dogs in the holes as shown.

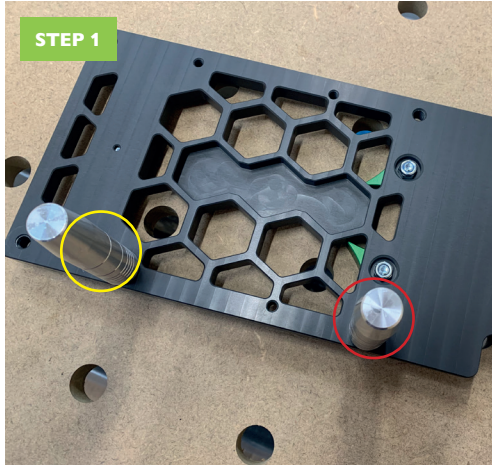


Push the dogs through your MFT Table holes.



Slide your rail through the guide on the square and tighten the thumbscrews to secure the rail in place - this setup will enable you to cut at 90° angles.

### STEP 1



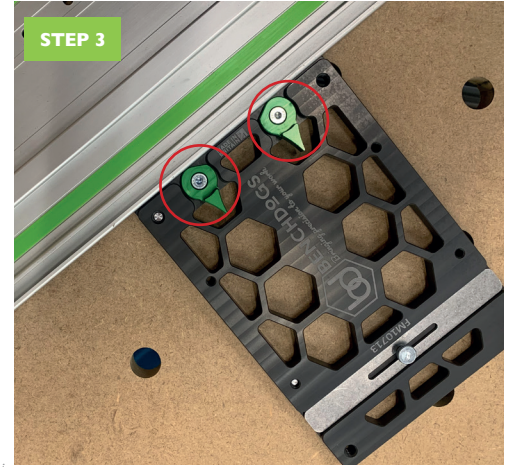
You will need 1x MFT grooved 45° adapter which can be bought separately. Screw one MFT grooved dog in the right hand hole (marked red) and a MFT grooved 45° adapter in the smaller hole on the left (marked yellow).

### STEP 2



Push the dogs through your MFT Table holes at a 45° angle.

### STEP 3



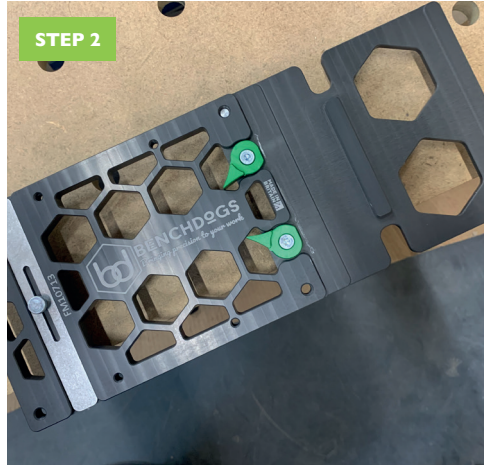
Slide your rail through the guide on the square and tighten the thumbscrews to secure the rail in place - this setup will enable you to cut at 45° angles.

STEP 1



Screw either the 30mm Bevel Adapters or the 60mm adapters – depending on the thickness of the board you are cutting – into the holes as shown.

STEP 2



Place the square/rail over the bevelled edge of your work piece to enable you get maximum stability to make the cuts you require.

STEP 1



With either of the grooved adapters in place you can use our b-collars to adjust the height of the square to fit perfectly with the thickness of your work piece, simply tighten the grub screws (circled) using the commonly spaced grooves to fix in place.



# BENCHDOGS

*Bringing precision to your work*



[WWW.BENCHDOGS.CO.UK](http://WWW.BENCHDOGS.CO.UK)

MADE IN BRITAIN