



QUAD HINGE SYSTEM

INSTRUCTION MANUAL

Alignment Pin Kit

BENCHDOGS

WHAT'S IN THE KIT

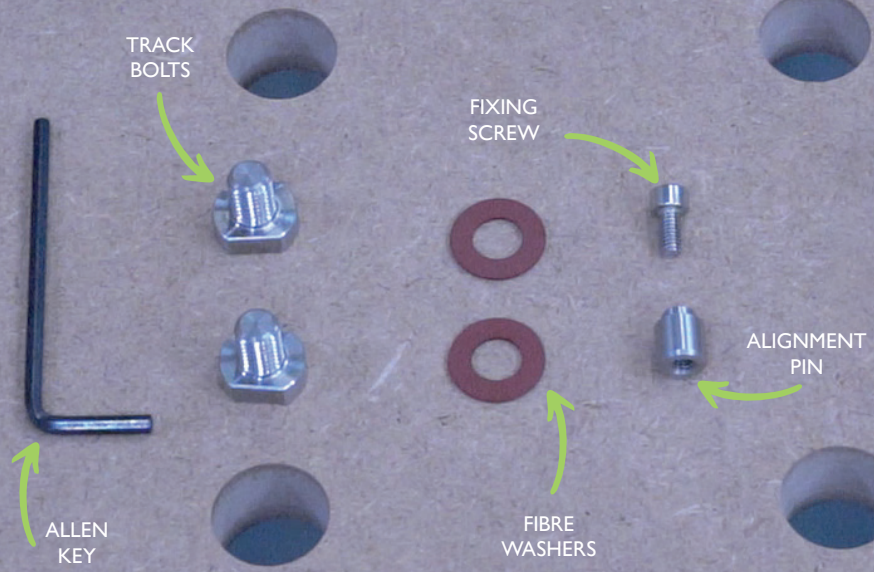
1 x Alignment Pin ◀

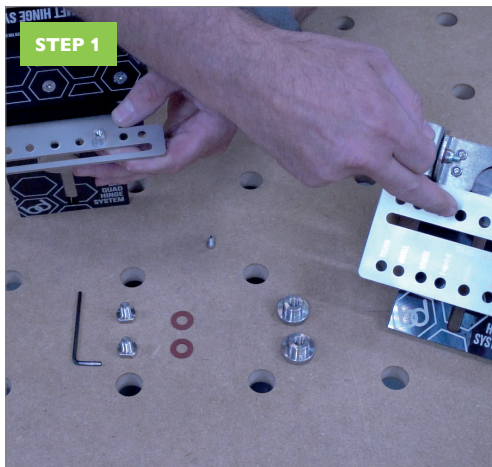
1 x Fixing Screw ◀

2 x Track Bolts ◀

2 x Fibre Washers ◀

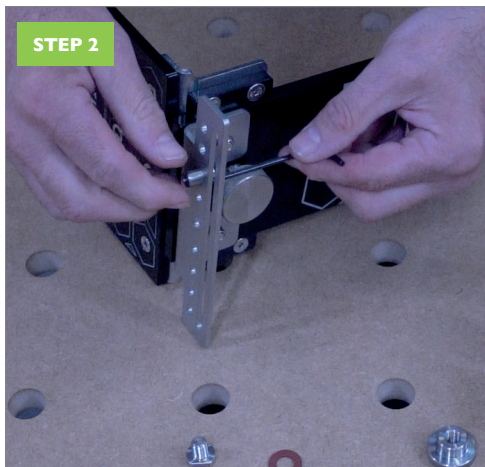
1 x Allen Key ◀





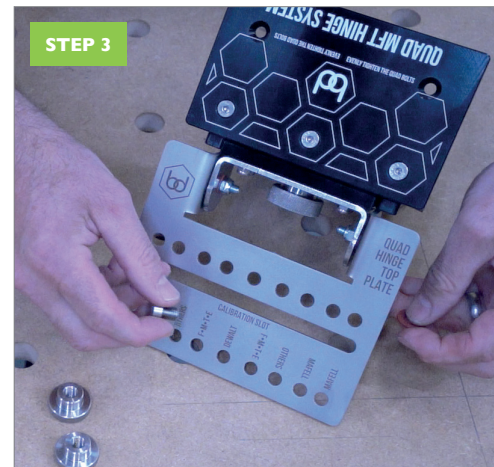
STEP 1

Fix your alignment pin to the relevant hole according to your track brand.



STEP 2

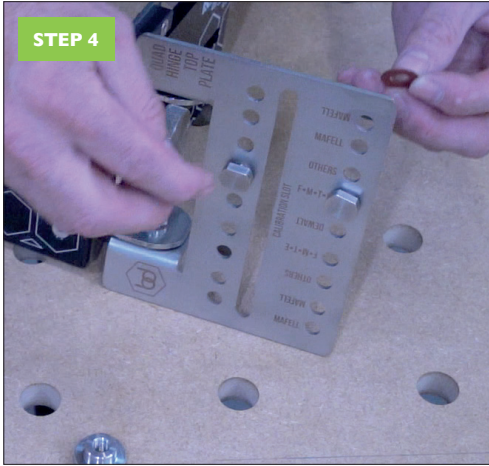
Using the supplied allen key, tighten the track screw to the alignment pin.



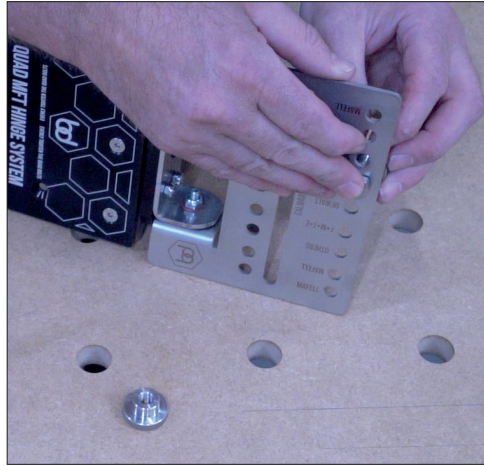
STEP 3

Fix your first track bolt to the hole selected for your brand

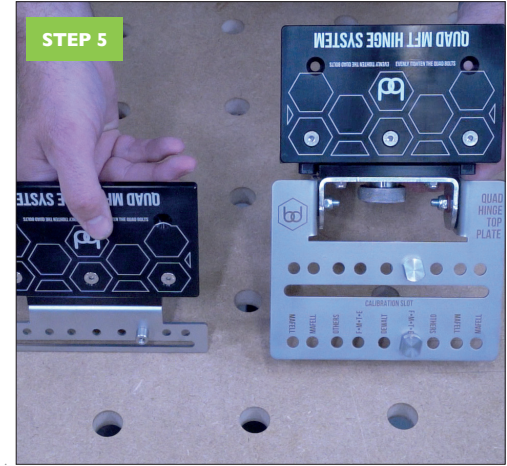
STEP 4



Place the second track bolt in the coordinating hole, first place the fibre washers before tightening using your thumbscrews

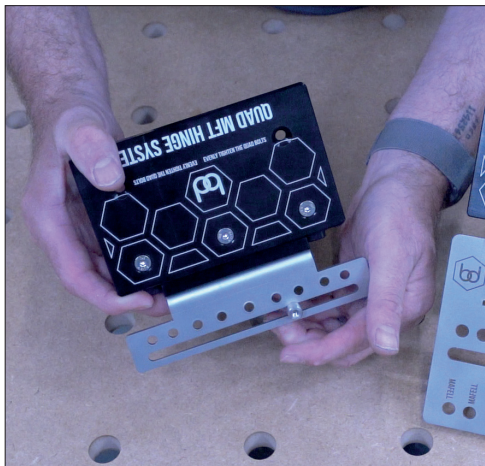
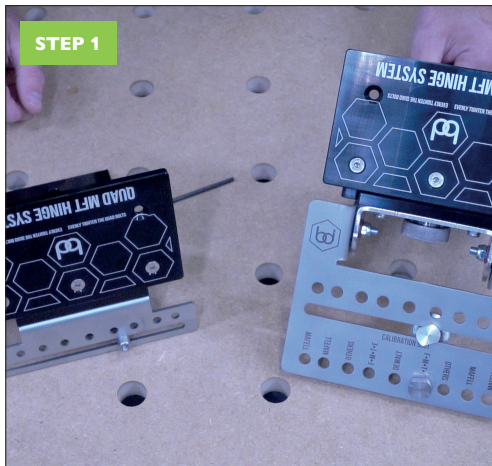


STEP 5



Your alignment pin kit should look like the image above, depending on the brand you are using.

STEP 1



If your table is not perfectly square, we have included an option to manually adjust your hinge system using the calibration slot. Firstly fix your alignment pin into the calibration slot and follow the same step for the unmarked track bolt.

STEP 2



Align your track and confirm accuracy, then tighten to the desired position.



BENCHDOGS

Bringing precision to your work



WWW.BENCHDOGS.CO.UK

MADE IN BRITAIN