



INSTRUCTION MANUAL

Parallel Guide System
Mafell / Bosch

BENCHDOGS

WHAT'S IN THE KIT

1. Fences 330mm (6) or 445mm (4) ◀
2. Track Adaptors Left & Right ◀
3. Stop Blocks - Left & Right ◀
4. Fence connectors 330mm(4) 445mm(2) ◀
5. Hex Keys 2mm, 2.5mm & 3mm ◀
6. Fence Joiners - 330mm(6) 445mm(4) ◀
7. Stainless Steel Thumb M5 x 10 with M5 T-Nut (2) ◀
8. Stainless Steel Thumb M5 x 10 (2) ◀
9. M5 Countersunk Screws (4) ◀

STEP 1



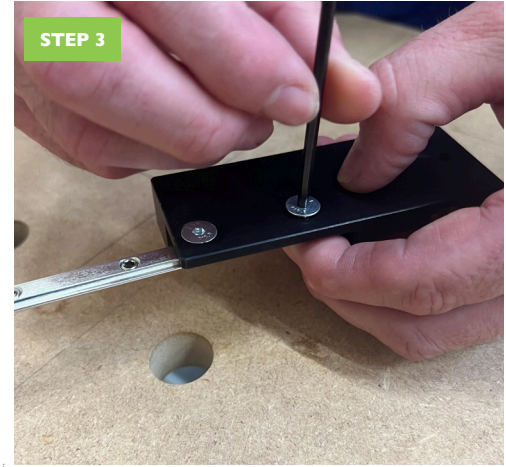
Remove 2 grub screws from 2 joining bars. These are not required and can be stored for spares.

STEP 2



Using the M5 countersunk screws (**item 9**) and place in the bottom two holes on the track adaptors (**item 2**) to attached the fence joiners from **Step 1**.

STEP 3



Tighten the screws with a 3mm Hex Key (**item 5**) but leave loose to allow the fence (**item 1**) to slide in.

STEP 4



If required, undo the grub screws to allow the fence to slide over the fence joiner.

STEP 5



Using the correct side, start sliding over the fence joiner and into the track adaptor.

STEP 6

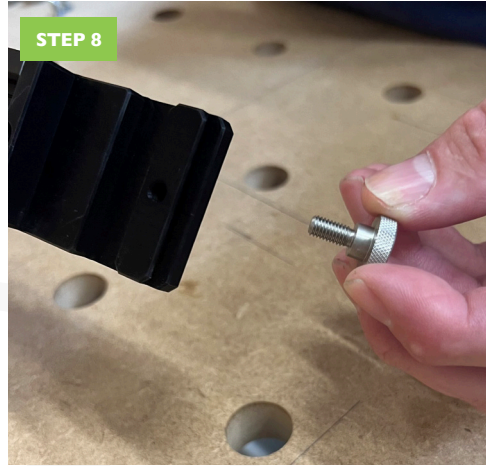


Ensure the fence is attached to the track adaptor like in the above images.



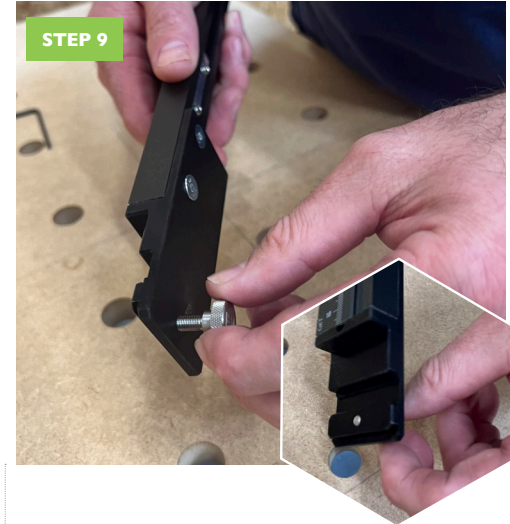
STEP 7

Tighten one of the screws to secure the fence, but do not over tighten as this will be loosen to calibrate to your track.



STEP 8

Using the M5 x 10 Thumbscrews (item 8) attach from the bottom of the track adaptor in the M5 tapped hole.



STEP 9

Tighten just before it appears through the other side.

STEP 10



Locate the stop block for the correct side of the track (**item 3**) and inset the thumbscrew with the plastic washer.

STEP 11



Insert the M5 T-Nut into the fence slot.

STEP 12



Attach the stop block to the T-Nut.

STEP 13



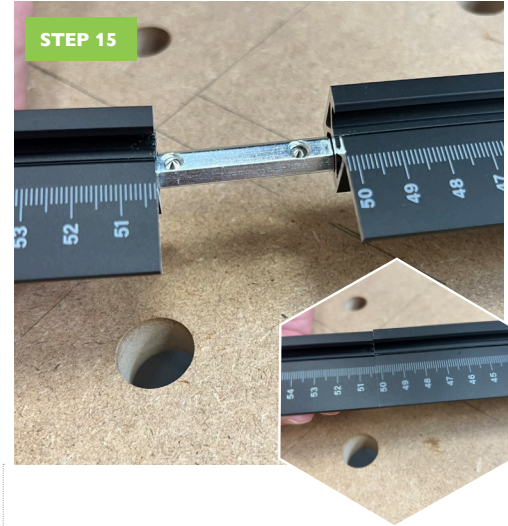
Move to a desired measurement and tighten the thumbscrew. Do not over tighten as this may cause damage to the aluminium fence.

STEP 14



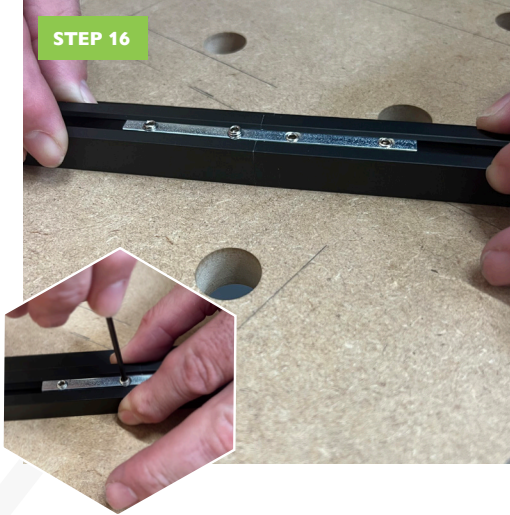
If additional measurement is required, you can add extra pieces to lengthen the fence. Using the supplied fence joiners, loosen the grub screws and insert into the bottom of the already fitted fence using 2 grub screws for each fence.

STEP 15



Slide in the additional fence extension.

STEP 16



Tighten the grub screws to make contact with the fence, not to fully tighten.

STEP 17

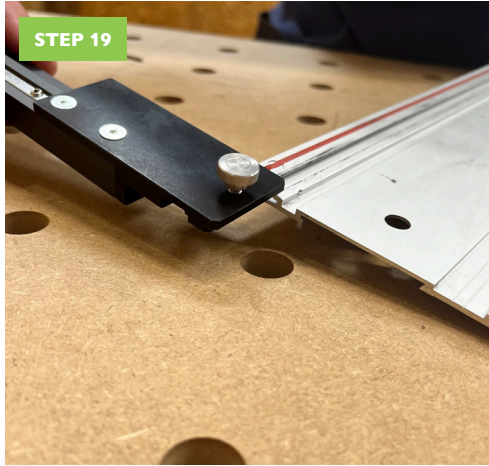


Locate a fence connector (**item 4**) and loosen the two grub screws with the 2mm Hex Key

STEP 18



Fit over the fence like the above image, this will level the 2 fences. Then tighten the two grub screws then tighten the grub screws from **STEP 16**



Slide the track adaptors into your Mafell or Bosch Track in the rear bottom slot.



Move to the approx width of the workpiece and tighten one of the thumbscrews.



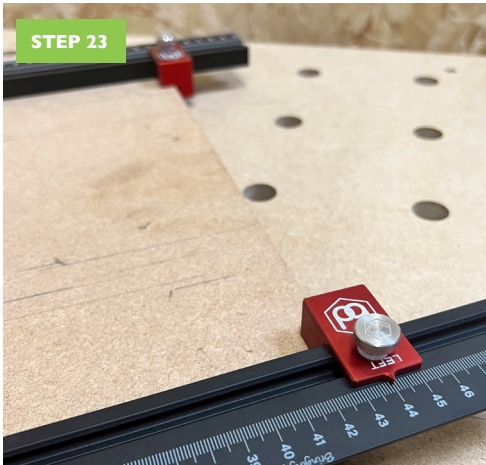
The parallel guide works from either side of the workpiece, not on top of the workpiece.

STEP 22



Rest the stop block on the material. This is the true reference point to the pointer on the top of the stop block.

STEP 23

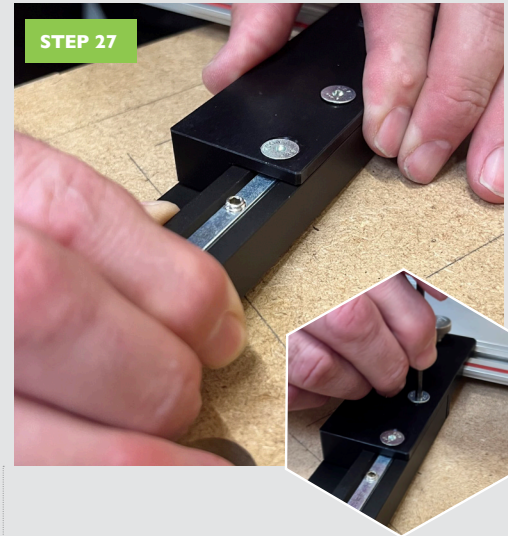
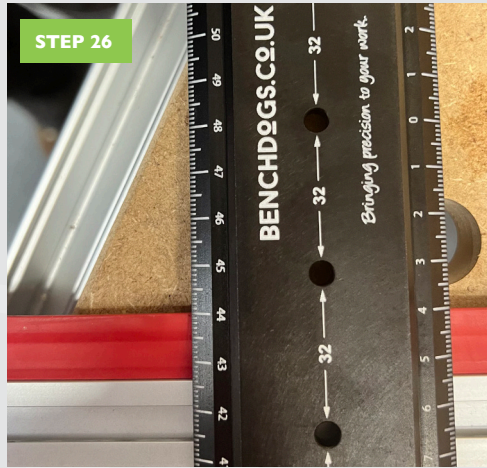
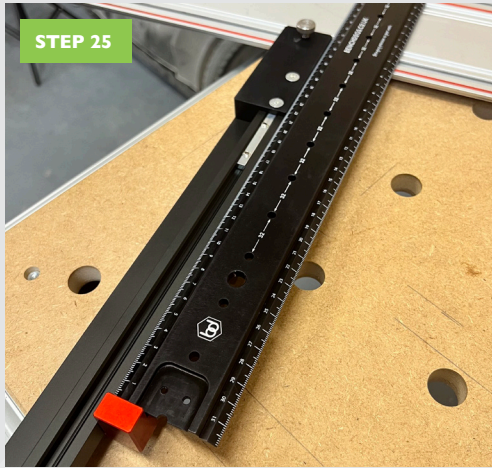


Slide the other track up to the other edge of the work piece and tighten the other bottom thumbscrew.

STEP 24



From the bottom of the track and parallel guide system, loosen the two grub screws.



Using a ruler (preferred item) or tape measure.

Measure from the stop block to your cut line on the splinter strip.

Adjust the fence to the measurement that you have set on your stop block, in our case this was 440mm as set in **STEP 23**.

Once the correct movement has been made, tighten the two screws on the track adaptor and repeat this on both sections.



BENCHDOGS

Bringing precision to your work



WWW.BENCHDOGS.CO.UK

MADE IN BRITAIN