



INSTRUCTION MANUAL

**Quad MFT
Hinge System**

BENCHDOGS

WHAT'S IN THE KIT

1. HINGE ADAPTOR ◀

2. ALIGNMENT ADAPTOR ◀

3. SPARE ORINGS 8X ◀

4. SPARE FIBRE WASHERS 2X M9.1MM ◀

5. QUAD BASE BOLTS ◀

6. QUAD BASE ◀

7. HEX KEY ◀

8. TRACK BOLTS ◀

9. ALIGNMENT PIN ◀

10. TRACK BOLTS THUMB ◀

11. FIBRE WASHERS M8 ◀

12. HEX KEY ◀

ALIGNMENT PIN PACK



STEP 1



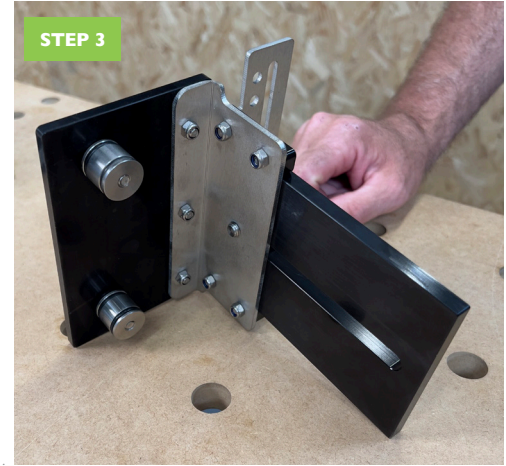
Locate the alignment adaptor as pictured above

STEP 2



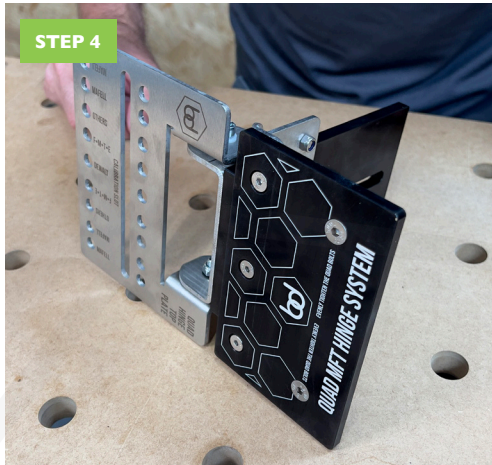
Using the supplied countersunk screws place them in the countersunk holes (x2)

STEP 3



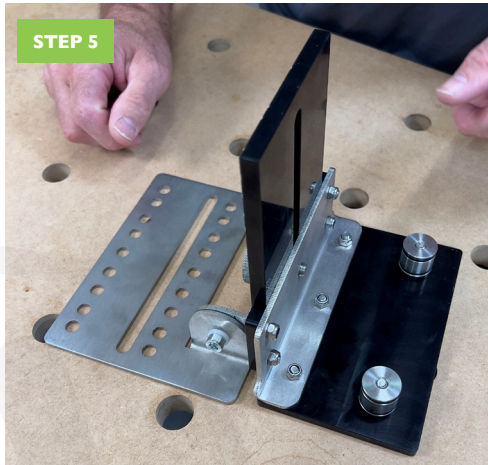
Thread into the quad bases (x2)

STEP 4



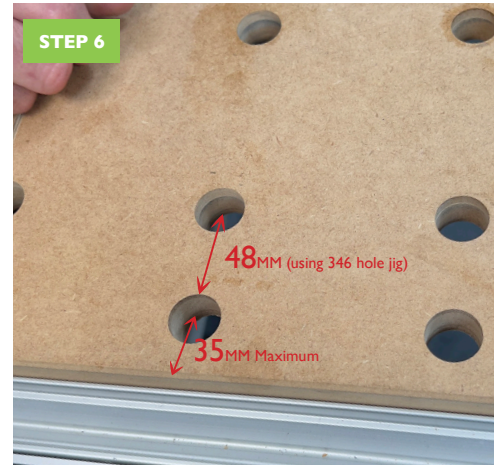
Locate the Hinge adaptor plate

STEP 5



Using the supplied countersunk screws place them in the countersunk holes and attach the quad bases like in previous alignment adaptor instruction.

STEP 6



With your pre-drilled holes in your MFT top, ensure the holes are a maximum distance of 35mm from the edge of the table. If using our 346 hole jig we advise the holes are 48mm from a row of holes.

STEP 7



Locate and Insert the hinge adaptor plate into the 2x 20mm holes.

STEP 8



Using the supplied hex key tighten the quad bases evenly until solid and no movement is made with the hinge system.

STEP 9



STEP 10



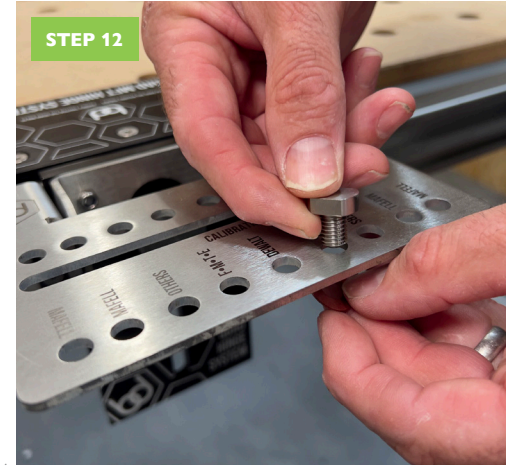
Locate and Insert the hinge support plate into the 2 x 20mm holes.

STEP 11



Using the supplied hex key tighten the quad bases evenly until solid and no movement is made with the hinge system.

STEP 12



Using the supplied track bolts insert these into the labelled track brand holes (FMTE - Festool Makita Triton and Evolution)

STEP 13



Using the supplied fibre washers, attach the track bolt with the knurled female thumbscrew. Ensure there is play left to allow the track to slide in.

STEP 14



Set the 2nd Track bolt with the knurled female thumbscrew.

STEP 15



Ensure there is play left to allow the track to slide in.



Slide the track bolts into the track.



Line up the edge of the track with the edge of the hinge plate



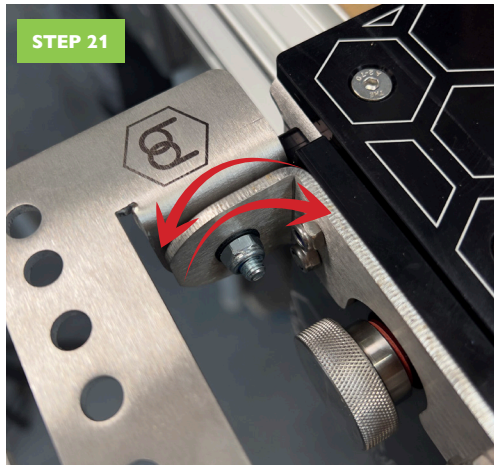
Locate the supplied alignment pin which fits your brand of track, this was selected when purchasing your system.



Insert this in the hole in line with the brand you have ordered (FMTE - Festool Makita Triton and Evolution)

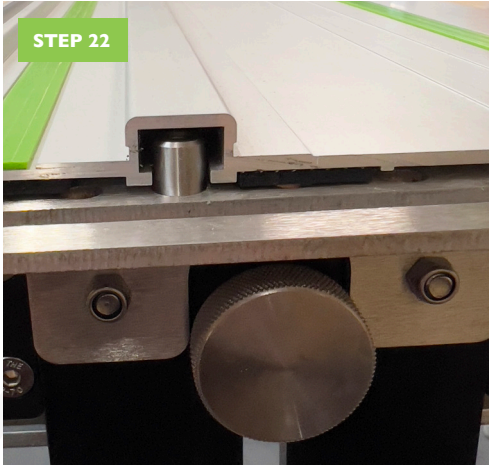


Check hinge lifts into a vertical position and stays in place with the hinge in its upright or lowering position, there will be some lateral movement this is normal and will not move once located in the alignment pin



Adjust tension to achieve the desired force to allow the track to hold itself

STEP 22



When lowering the track ensure the track locates in the pin as shown above

FINAL SET UP



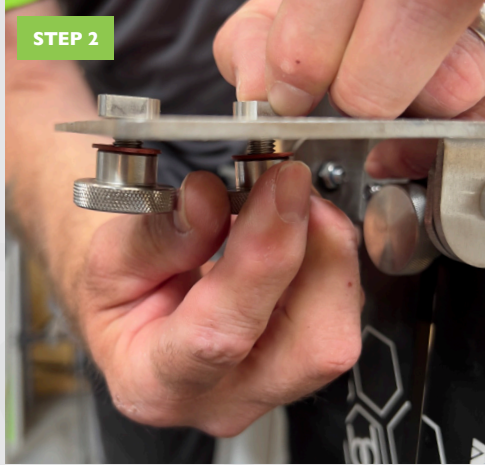
STEP 1



If your mft is not square you can still achieve square cuts by moving 2 parts and calibrating to your fence or benchdogs.

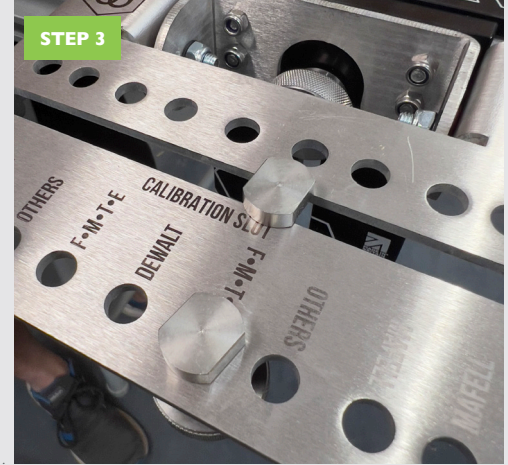
Move the alignment pin into the long slot and leave loose

STEP 2



Move the inner track bolt

STEP 3



Place into the calibration slot and leave loose

STEP 4



Line up your track with the track bolts

STEP 5



Slide in your track

STEP 6



Once square tighten the thumbscrew and hex bolt on the alignment pin and recheck for squareness

STEP 7



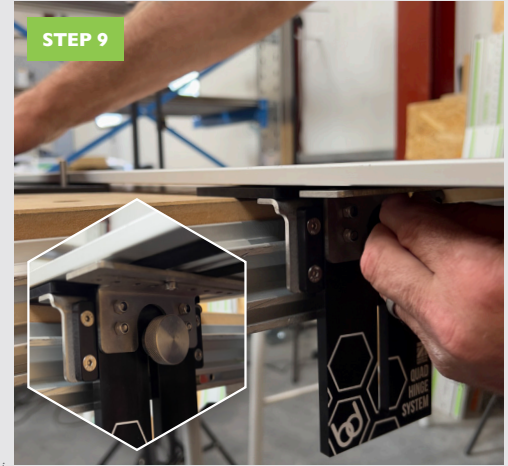
Using a known accurate square like our precision triangle use this to square up your track with the fence or benchdogs

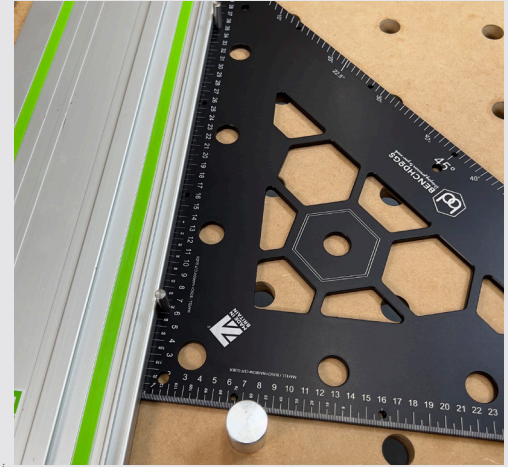
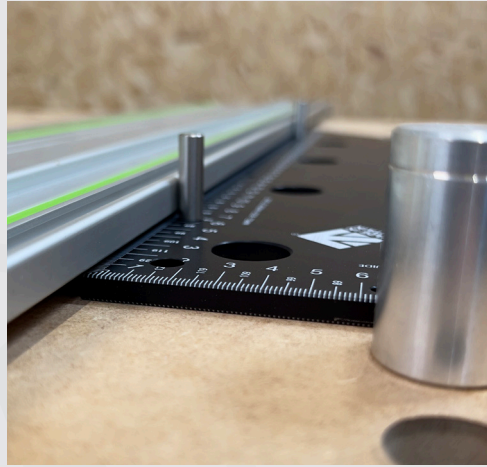
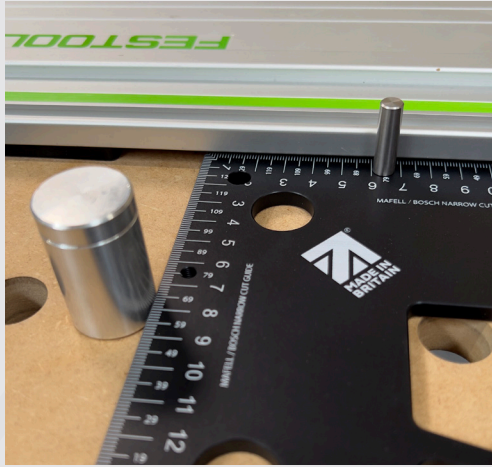
STEP 8



With the alignment pin still loose place the pin in the track slot

STEP 9





Checking Precision With Metric Fence System

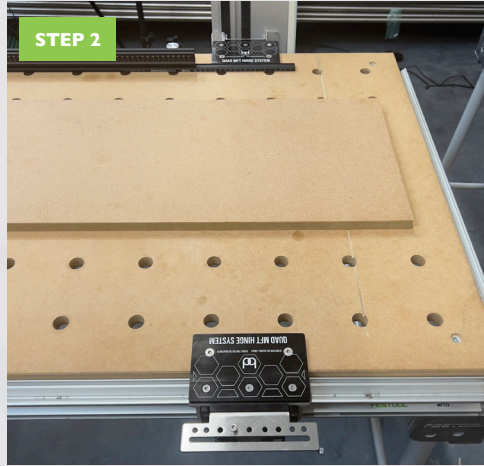


STEP 1



Loosen the knurled thumb screw on both ends

STEP 2



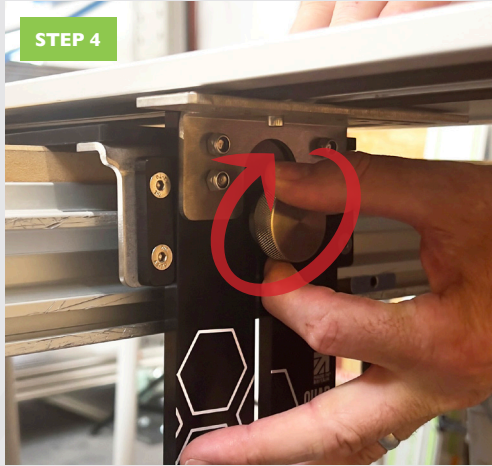
Lift and slide in a piece of material you are going to cut and lay the track flat on the surface,

STEP 3



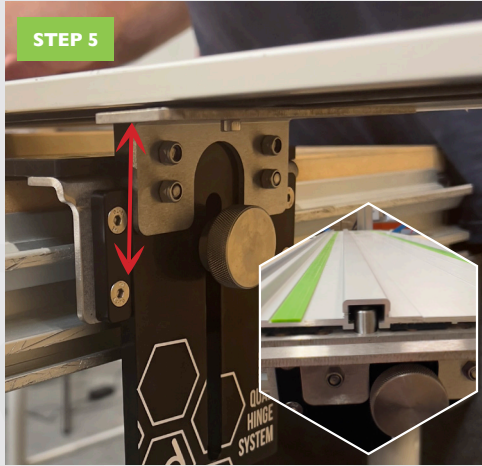
Place your hand on the track

STEP 4



Tighten the knurled thumbscrew on the hinge part

STEP 5



Lift the support/alignment pin into the track slot

STEP 6



Tighten the knurled thumbscrew



BENCHDOGS

Bringing precision to your work



WWW.BENCHDOGS.CO.UK

MADE IN BRITAIN