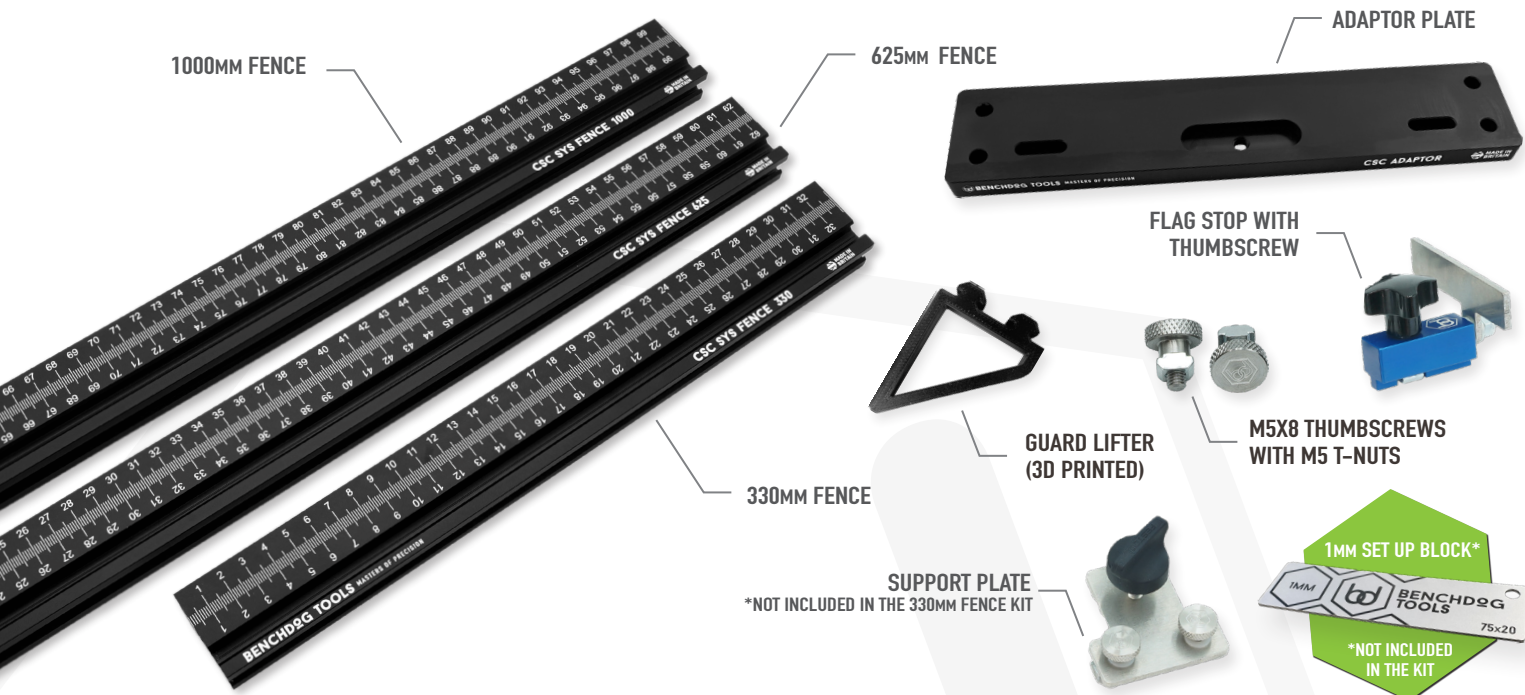


CSC SYS FENCE & ADAPTER PLATE SET UP INSTRUCTIONS



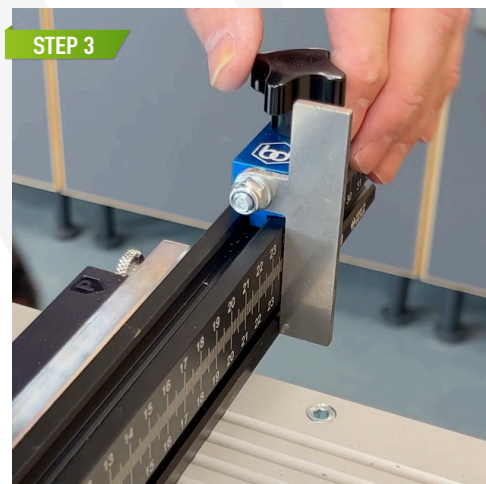
STEP 1

REMOVE THE THUMBSCREW & FENCE THAT COMES WITH THE CSC SYS 50 AND REPLACE IT WITH THE PROVIDED ADAPTOR PLATE. THEN USING THE THUMBSCREWS, PUT A T-NUT ONTO EACH THUMBSCREW ON EITHER SIDE OF THE ADAPTOR PLATE AND LEAVE LOOSE.



STEP 2

TAKING THE ADAPTOR PLATE, ALIGN UP THIS AGAINST THE MITRE SAW. USING THE THUMBSCREW THAT IS SUPPLIED WITH THE CSC SYS, SCREW THE ADAPTOR PLATE INTO POSITION AND MAKING SURE THAT THIS IS NICE AND TIGHT



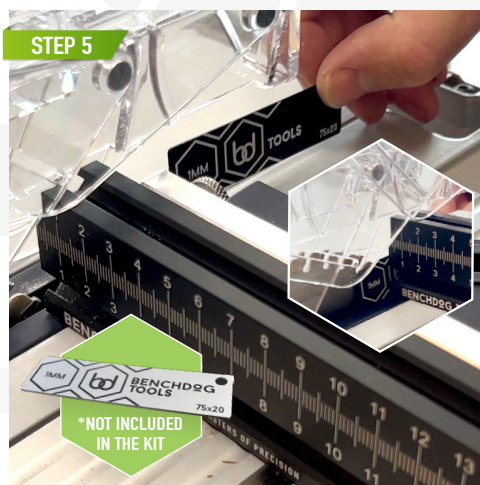
STEP 3

SLIDE THE FLAG STOP TO THE LENGTH YOU WANT YOUR MATERIAL SIZE TO BE.



STEP 4

NEXT YOU NEED TO SET THE HIGHT OF THE THE BLADE TO BE AT A MINIMUM OF 36mm. THIS ALLOWS THE FENCE TO GO THROUGH AND RETURN BACK.



STEP 5

YOU THEN WANT TO MAKE SURE THAT YOU'RE 1MM AWAY FROM THE SAW BLADE. (WE HAVE USED OUR 1MM SET UP BLOCK FOR THIS). PUT THIS BLOCK AGAINST THE BLADE AND THE FENCE, THEN TIGHTEN THE THUMBSCREWS ON THE ADAPTOR BLOCK AND PULL AWAY THE SET UP BLOCK.



STEP 6

YOU CAN NOW USE THIS TO CUT DOWN YOUR MATERIAL TO SIZE

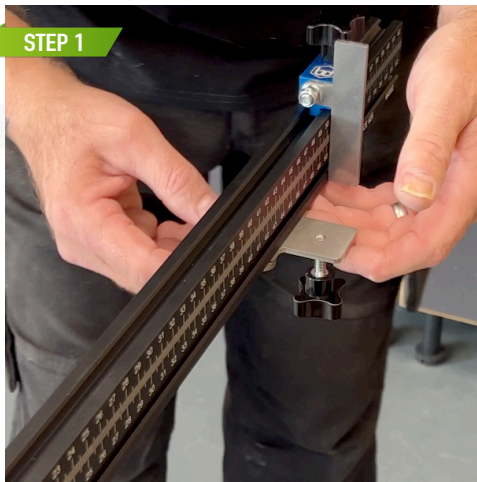
CSC SYS FENCE & ADAPTER PLATE SET UP INSTRUCTIONS

SUPPORT PLATE FOR 625MM & 1000MM



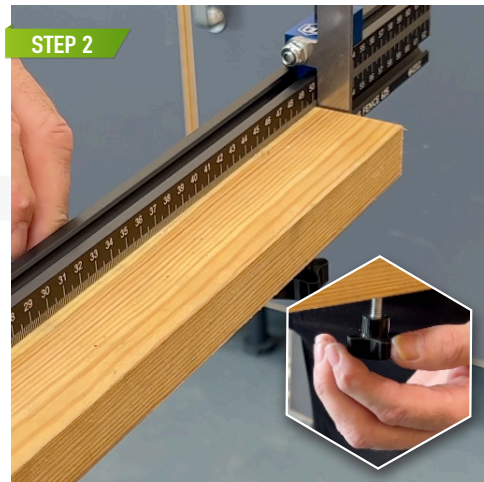
SUPPORT PLATE
*NOT INCLUDED IN
THE 330MM FENCE KIT

STEP 1



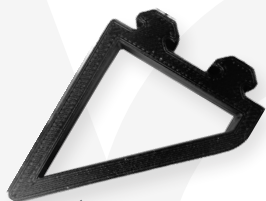
FOR THE 625MM AND 1000MM FENCE, YOU CAN SLIDE THE MATERIAL SUPPORT PLATE ON THE UNDERSIDE OF THE EXTRUSION AND SCREW THEM INTO PLACE USING THE ATTACHED STAINLESS STEEL THUMBSCREWS. THIS IS FOR WHEN THE MATERIAL YOU ARE USING IS LARGE / LONG TO STOP THE MATERIAL FROM TIPPING.

STEP 2



PLACE THE MATERIAL ON TOP OF THE SUPPORT PLATE AND YOU CAN ADJUST THE THUMBSCREW UNDERNEATH IF YOU NEED TO ALIGN AND LEVEL THE MATERIAL.

GUARD LIFTER



GUARD LIFTER
(3D PRINTED)

STEP 1



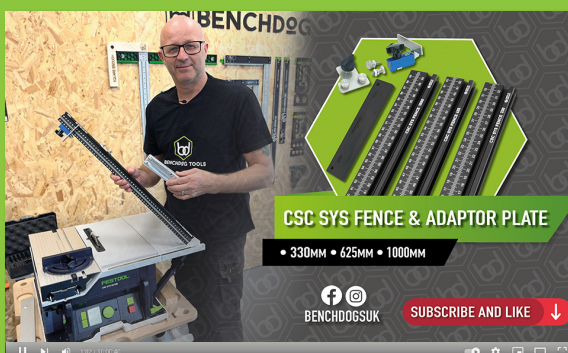
SLIDE ON THE GUARD LIFTER TO THE END OF THE FENCE AND NEAR TO THE CUTTING BLADE, THIS WILL ALLOW YOU TO GLIDE THIS THROUGH THE SAFETY GUARD WITHOUT ANY SNAGGING.

STEP 2



YOU CAN NOW SET YOUR BLADE TO BE AT ANY HEIGHT AND IT SHOULD PASS FREELY USING ANYTHING ABOVE 36MM HIGH.

WATCH OUR VIDEO ON HOW TO USE THE
CSC SYS FENCE AND ADAPTOR PLATE HERE...



SCAN THE QR CODE

CSC SYS FENCE & ADAPTER PLATE

SET UP INSTRUCTIONS



REMOVE THE THUMBSCREW & FENCE THAT COMES WITH THE CSC SYS 50 AND REPLACE IT WITH THE PROVIDED ADAPTOR PLATE. THEN USING THE THUMBSCREWS, PUT A T-NUT ONTO EACH THUMBSCREW ON EITHER SIDE OF THE ADAPTOR PLATE AND LEAVE LOOSE.

TAKING THE ADAPTOR PLATE, ALIGN UP THIS AGAINST THE MITRE SAW. USING THE THUMBSCREW THAT IS SUPPLIED WITH THE CSC SYS, SCREW THE ADAPTOR PLATE INTO POSITION AND MAKING SURE THAT THIS IS NICE AND TIGHT

SLIDE THE FLAG STOP TO THE LENGTH YOU WANT YOUR MATERIAL SIZE TO BE.

NEXT YOU NEED TO SET THE HIGHT OF THE THE BLADE TO BE AT A MINIMUM OF 36mm. THIS ALLOWS THE FENCE TO GO THROUGH AND RETURN BACK.

YOU THEN WANT TO MAKE SURE THAT YOU'RE 1mm AWAY FROM THE SAW BLADE. (WE HAVE USED OUR 1mm SET UP BLOCK FOR THIS). PUT THIS BLOCK AGAINST THE BLADE AND THE FENCE, THEN TIGHTEN THE THUMBSCREWS ON THE ADAPTOR BLOCK AND PULL AWAY THE SET UP BLOCK.

YOU CAN NOW USE THIS TO CUT DOWN YOUR MATERIAL TO SIZE

FOR THE 625MM AND 1000MM FENCE, YOU CAN SLIDE THE MATERIAL SUPPORT PLATE ON THE UNDERSIDE OF THE EXTRUSION AND SCREW THEM INTO PLACE USING THE ATTACHED STAINLESS STEEL THUMBSCREWS. THIS IS FOR WHEN THE MATERIAL YOU ARE USING IS LARGE / LONG TO STOP THE MATERIAL FROM TIPPING.

PLACE THE MATERIAL ON TOP OF THE SUPPORT PLATE AND YOU CAN ADJUST THE THUMBSCREW UNDERNEATH IF YOU NEED TO ALIGN AND LEVEL THE MATERIAL.

SLIDE ON THE GUARD LIFTER TO THE END OF THE FENCE AND NEAR TO THE CUTTING BLADE, THIS WILL ALLOW YOU TO GLIDE THIS THROUGH THE SAFETY GUARD WITHOUT ANY SNAGGING.

YOU CAN NOW SET YOUR BLADE TO BE AT ANY HEIGHT AND IT SHOULD PASS FREELY USING ANYTHING ABOVE 36mm HIGH.