

SWISS QUARTZ CALIBER 507

USER MANUAL

APPLICABLE TO:

THE GENERATIONS SERIES DAYDATE


Fromanteel
AMSTERDAM

CONGRATULATIONS

Welcome to the small circle of individuals who, if we are to be absolutely precise, demand slightly more of a watch than absolute precision.

Appreciation of a watch is more than a mere recognition of the correct time. It is enthusiasm for an ingenious idea. For the interplay between precision and imagination. Between time and timelessness. Between boundaries and infinity. Between laws to which the entire world is subject, and taste, which cannot be dictated to anyone.

That's why Fromanteel devotes time to watches that must not only run with absolute precision but which also, with every passing second, exert a fascination with the great achievements of master craftsmanship: a fascination with new inventions of a technical, material or formal nature, even if they are concealed in minute details that are perhaps not even visible.

You are now the owner of a beautiful new example of this Fromanteel tradition, gifted to you by a special someone, or by yourself. Whoever it was, has come to realize that this was the time to credit you for the good you did or achieved. May this watch forever be the reminder of that moment.

Fromanteel. Quality Time you can truly own.

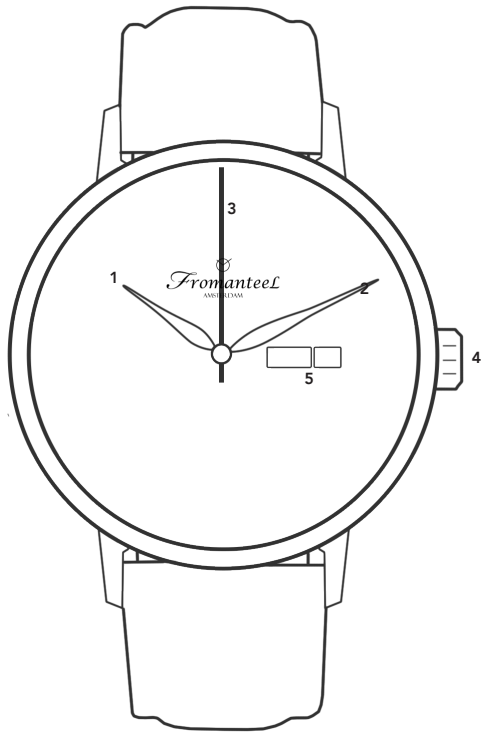
TECHNICAL FUNCTIONS OF THE QUARTZ 507 CALIBER

Your Fromanteel watch displays the time in hours, minutes, seconds and the day of the week. The 507 Caliber is therefore one of our most advanced and complicated movements.

The Swiss Quartz movement is of the highest quality and manufactured by the renowned Swiss caliber (movement) manufacturer Ronda.

Your watch is protected by a sapphire glass of hardness grade 9 on Mohs' scale. Your watch is water-resistant to 5 ATM.

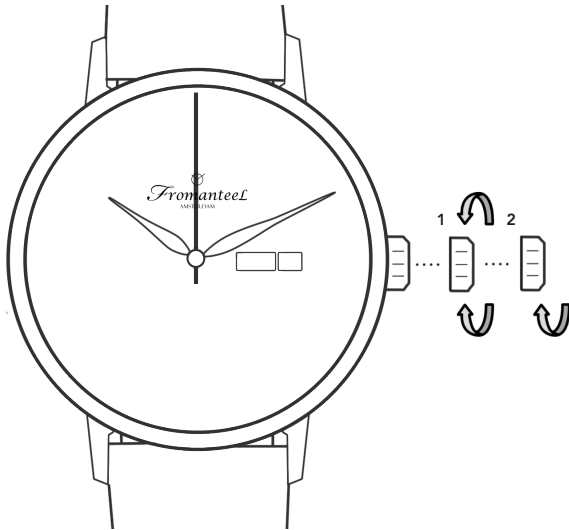
To ensure that this extraordinary watch continues to perform faultlessly in the future, we present you with a good set of tips on how to operate and maintain it.



Hour hand ...1 5 ... Day-Date Indicator
Minute hand ...2
Second hand ...3

Crown ... 4

FUNCTIONS OF THE CROWN



NORMAL POSITION

With the crown in the normal position (0), your watch is 'locked' from an accidental adjustment of your hour, minute, day or date. Also, the Quartz movement is activated and draws power from its battery at this position. The crown must always be in position 0 when you are wearing your watch.

DATE SETTING

Pull the crown out to position (1) to stop the watch. Turn the crown clockwise to adjust the date. Once done, push the crown into position 0 to 'lock' the watch and activate it once again.

DAY SETTING

Pull the crown out to position (1) to stop the watch. Turn the crown anti-clockwise to adjust the day of the week. You will notice that the day of the week can both be indicated in English as in French. Once you're done, push the crown into position 0 to 'lock' the watch and activate it once again.

TIME SETTING

Pull out the crown to position (2). This will stop the movement.

Now use the crown to move the minute hand a few minute-strokes beyond the time to be set. Then position the minute hand by moving it gently backward until it is precisely above the correct minute stroke. This ensures that the minute hand begins to run immediately when you restart the movement. Push the crown back into position (0) to activate the watch.

PREVENTIVE MAINTENANCE

Dust and dirt tend to collect in gaps in the back of the case or strap. We advise, therefore, to clean your watch occasionally. Use a dry toothbrush to clean your watch-case. Avoid contact with solvents, detergents, perfumes, cosmetic products, since they may damage the leather strap, your watch case or the gaskets between the pushers or crown.

Avoid speakers or refrigerators, since these have strong magnetic fields. Avoid shocks, whether thermal or other. Avoid temperatures above 60°C (140°F), below 0°C (32°F) or extreme temperature changes.

For the Chronograph: do not operate the pushers under water to prevent water from entering the movement. Store your watch in a dry place when not using it.

Replace an empty battery as soon as possible. Fromanteel offers a battery replacement service on its website or in The Fromanteel Store. Each Fromanteel Quartz watch comes with an 'end-of-life' battery indicator. You will notice the second-hand jumping in intervals of 3 to 4 seconds. This means the battery should be changed in the next 2-3 weeks to prevent permanent damage to the watch.

A THING OR TWO ABOUT WATER RESISTANCE

The water-resistance of Fromanteel watches is stated in ATM (atmosphere) instead of in meters. 1 ATM stands for a unit of pressure equal to the air pressure at sea level (or 14.72 pounds of weight per square inch). Meters, which are often used elsewhere in the watch industry to indicate water-resistance, cannot be equated with dive depth because of the test procedures that are frequently used.

Water-resistance shown in meters provides no indication as to actual use of the watch in the presence of moisture and wetness, and in or under water. As body movement caused by swimming or strong water current can also influence the increase in pressure. Depth alone would be inaccurate to address the water-resistance of your watch. All Fromanteel watches are made to resist 5 ATM (or more, if differently indicated).

To ensure that your watch continues to function correctly, you should have it checked by a Fromanteel Service Centre at least once every two years. Your watch should also be tested after exposure to unusually harsh conditions. If the tests are not carried out as stipulated, or if the watch is opened by an unauthorized third party, Fromanteel will accept no warranty or liability claims.

A NOTE: ABOUT THE STRAPS

Most of the Fromanteel straps are made of leather. Fromanteel offers, however, a small selection of textile or rubber with a leather or textile inlay. These straps are carefully made by hand and use natural materials. It is therefore essential to make sure that the high-quality strap does not come into contact with water, oily substances, solvents, cleaning agents, or cosmetic products. This way, you can prevent discoloration and premature aging of the material.

SERVICE YOUR WATCH

Although the parts in this watch are all manufactured from top-quality materials, some components are subject to natural wear and tear. It is particularly important to ensure that the points at which wear occurs are always well lubricated and that oil contaminated by metal abrasion is regularly removed. For this reason, we recommend that you have your watch serviced approximately every 3 to 4 years.


Fromanteel
AMSTERDAM
