

SWISS AUTOMATIC CALIBER 2824-2

USER MANUAL

APPLICABLE TO:

THE PENDULUM ORIGINAL
THE PENDULUM DARK EDITION
THE PENDULUM BLUE
THE SPECIAL EDITION X PENDULUM


Fromanteel
AMSTERDAM

CONGRATULATIONS

Welcome to the small circle of individuals who, if we are to be absolutely precise, demand slightly more of a watch than absolute precision.

Appreciation of a watch is more than a mere recognition of the correct time. It is enthusiasm for an ingenious idea. For the interplay between precision and imagination. Between time and timelessness. Between boundaries and infinity. Between laws to which the entire world is subject, and taste, which cannot be dictated to anyone.

That's why Fromanteel devotes time to watches that must not only run with absolute precision but which also, with every passing second, exert a fascination with the great achievements of master craftsmanship: a fascination with new inventions of a technical, material or formal nature, even if they are concealed in minute details that are perhaps not even visible.

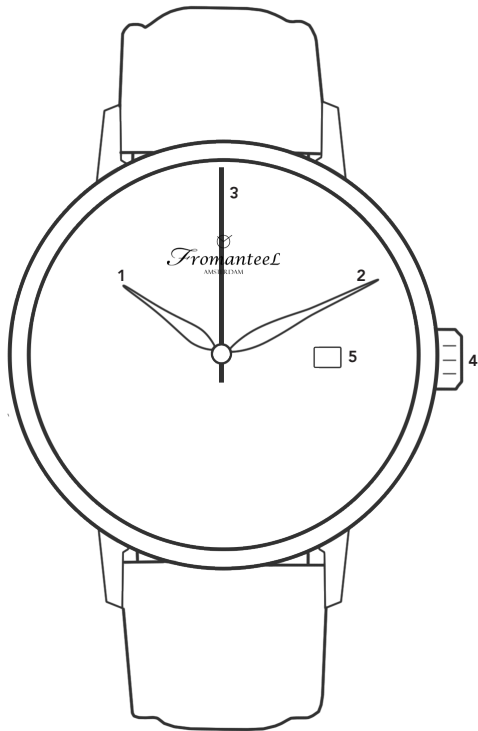
You are now the owner of a beautiful new example of this Fromanteel tradition, gifted to you by a special someone, or by yourself. Whoever it was, has come to realize that this was the time to credit you for the good you did or achieved. May this watch forever be the reminder of that moment.

Fromanteel. Quality Time you can truly own.

TECHNICAL FUNCTIONS OF THE AUTOMATIC 2824-2 CALIBER

Your Fromanteel watch shows you the time in hours, minutes, seconds and date. This mechanical movement comes with an automatic self-winding mechanism and has a power reserve of approximately 38 hours when fully wound.

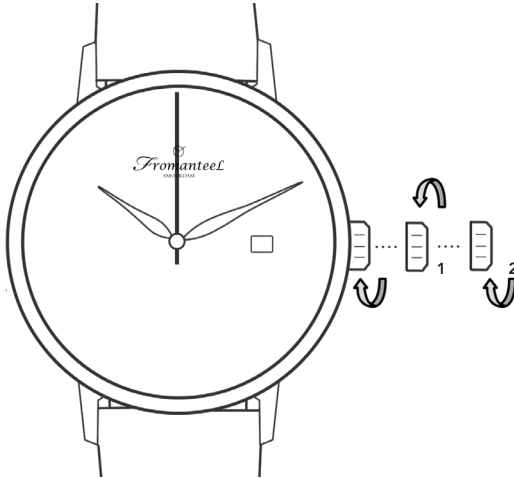
Your Pendulum watch is protected by a sapphire of hardness-grade nine on Mohs' scale. Your watch is water-resistant up to 5 ATM. Fromanteel has formulated the following instructions to ensure that this extraordinary watch continues to perform faultlessly in the future.



Hour hand ... 1 5 ... Date Indicator
Minute hand ... 2
Second hand ... 3

Crown A ... 4

FUNCTIONS OF THE CROWN



NORMAL POSITION

When the crown is in its normal position (0), the watch is 'locked.' This position protects accidental tampering of the time and date settings. Also, this position allows you to wind the movement by hand, — in case the watch has not been worn for a while. Please note that the crown must always be in position (0) when you are wearing your watch.

A few revolutions of the crown are sufficient to start the movement. It is best not manually to wind the watch when on the wrist — manually winding while on the wrist can lead to damage to the stem of the crown.

Also, it is best to wind the watch through approximately 20 revolutions. The 2824-2 automatic movement has a built-in safety, so it can not be overwound. After about 50 revolutions, the stem stops to interface with the winding mechanism, preventing winding related-damage.

DATE SETTING

Pull the crown out to position (1). You can now set the date by turning the crown clockwise. Once set, push the crown back into its normal position (0) to 'lock' your watch.

Note: If a month has fewer than 31 days, you will need to set the date manually to the first day of the following month.

TIME SETTING

Pull out the crown into position 2; this will stop the movement. It is best to stop the movement just as the Second hand hits the full minute (60 second), for an accurate setting of the time.

Now, move the minute hand a bit beyond the time to be set. Then position the minute hand by moving it gently backward until it is exactly above the correct minute stroke.

Once set, push in the crown back into position 0.

Please note that when setting the time, please be aware of the date change, which always takes place at 12-midnight. If this change has already taken place at noon, you must move the hands forward by 12 hours.

PREVENTIVE MAINTENANCE

Dust and dirt tend to collect in gaps in the back of the case or strap. We advise, therefore, to clean your watch occasionally. Use a dry toothbrush to clean your watch-case. Avoid contact with solvents, detergents, perfumes, cosmetic products, since they may damage the leather strap, your watch case or the gaskets between the pushers or crown.

Avoid speakers or refrigerators, since these have strong magnetic fields. Avoid shocks, whether thermal or other. Avoid temperatures above 60°C (140°F), below 0°C (32°F) or extreme temperature changes.

Do not operate the crown under water to prevent water from entering the movement. Store your watch in a dry place when not using it.

A THING OR TWO ABOUT WATER RESISTANCE

The water-resistance of Fromanteel watches is stated in ATM (atmosphere) instead of in meters. 1 ATM stands for a unit of pressure equal to the air pressure at sea level (or 14.72 pounds of weight per square inch). Meters, which are often used elsewhere in the watch industry to indicate water-resistance, cannot be equated with dive depth because of the test procedures that are frequently used.

Water-resistance shown in meters provides no indication as to actual use of the watch in the presence of moisture and wetness, and in or under water. As body movement caused by swimming or strong water current can also influence the increase in pressure. Depth alone would be inaccurate to address the water-resistance of your watch. All Fromanteel watches are made to resist 5 ATM (or more, if differently indicated).

To ensure that your watch continues to function correctly, you should have it checked by a Fromanteel Service Centre at least once every three to four years. Your watch should also be tested after exposure to unusually harsh conditions. If the tests are not carried out as stipulated, or if the watch is opened by an unauthorized third party, Fromanteel will accept no warranty or liability claims.

A NOTE: ABOUT THE STRAPS

Most of the Fromanteel straps are made of leather. Fromanteel offers, however, a small selection of textile or rubber with a leather or textile inlay. These straps are carefully made by hand and use natural materials. It is therefore essential to make sure that the high-quality strap does not come into contact with water, oily substances, solvents, cleaning agents, or cosmetic products. This way, you can prevent discoloration and premature aging of the material.

SERVICE YOUR WATCH

Although the parts in this watch are all manufactured from top-quality materials, some components are subject to natural wear and tear. It is particularly important to ensure that the points at which wear occurs are always well lubricated and that oil contaminated by metal abrasion is regularly removed. For this reason, we recommend that you have your watch serviced approximately every 3 to 4 years.


Fromanteel
AMSTERDAM
