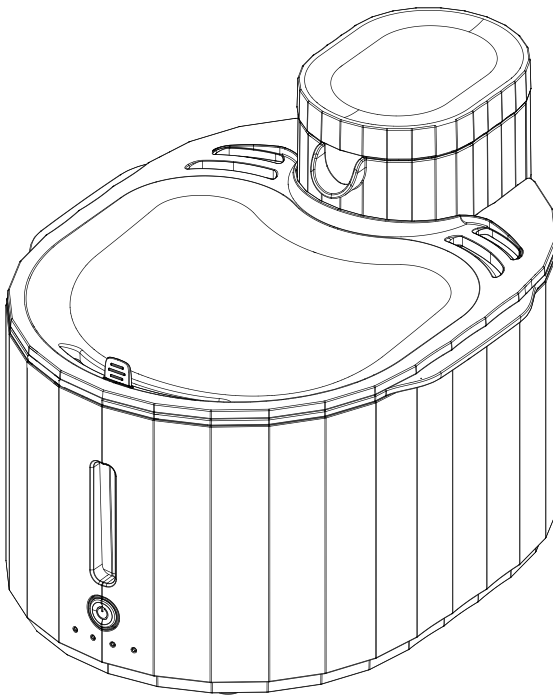


Operation Manual

CJ501 Magic Clean Pet Water Purifier



Thank you very much for choosing our magic clean pet water purifier. Please read the operation manual carefully before use and keep the operation manual properly for future reference.

Notes of Caution:

Please read the operation manual carefully before use and keep the operation manual properly, to gain a good experience with our product.

1. Do not disassemble, maintain or refit the machine by yourself, to avoid causing trouble, danger or even fire.
2. Please use the original bite-proof braided conducting wire in conjunction with the original DC adapter of Petfamily.
3. Do not move the machine by pulling on the braided conducting wire.
4. Please use the machine indoors only, and avoid direct sunlight; please place the machine on a flat and stable floor, to avoid internal damage or potential safety hazard due to the machine's turning over.
5. The base of the product is forbidden to be immersed or soaked in water.
6. It is recommended to replace the filter elements once within two months (simultaneously replace #1 and #2 filter elements), to avoid causing the deterioration of the water quality and affecting the function of the water outlet.
7. Keep the surroundings of the product cool and dry, and rinse the water tank regularly every week.
8. When cleaning the machine, do not wipe the surface and interior of the pet water purifier with etchant solution, to prevent the surface of the machine from fading and the interior of the machine from corroding.
9. Please unplug the DC adapter if the product has not been used for more than 7 days. Please discard the residual water in the water tank and replace it with clear water before re-enabling the product.
10. Do not place any candle, lighter or other flammable dangerous goods on the pet water purifier.
11. Do not place any vessels containing water, medicine, food or small metal objects above the pet water purifier, to prevent small objects entering the water purifier or the water receiving tray and thus being accidentally eaten by pet.

12. The pet water purifier should be neither close to any heating and strong magnetic appliances nor exposed to sun, rain or humidity, which might cause damage to the machine.

13. When cleaning, maintaining or temporarily not using the machine, it is required to press the ON/OFF key for turning off the machine and then unplug the DC adapter.

14. The product adopts the mode of low voltage, but electricity leakage will still be caused when a pet bites the wire. Please guide the pet properly. If the bite-proof wire is damaged, to avoid danger, please buy new original type-C bite-proof braided conducting wire.

15. Any child must use the product under the guidance and attention from an adult.

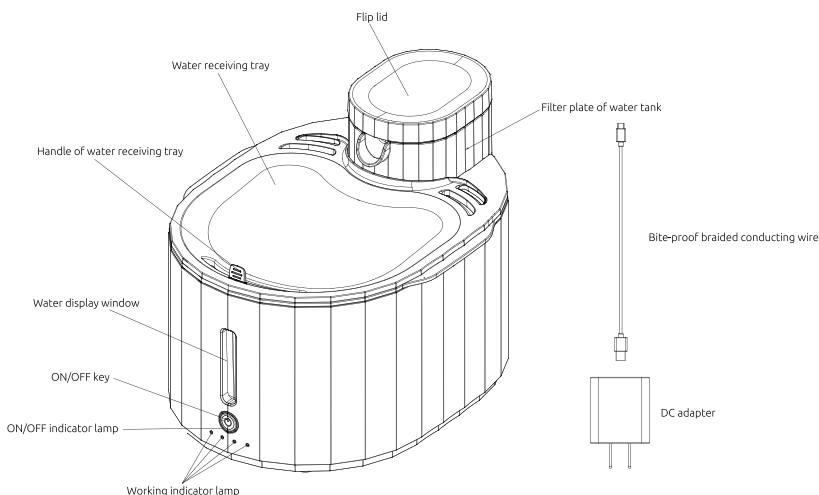
Note: Before use, please acquire detailed information of the correct operation method of the magic clean pet water purifier; if you fail to comply with the above terms, the product might not function properly or other accidental injury might occur.

2. Operation

2.1 Unpacking

Open the package, and take out the product as well as its accessories and information materials. (Please keep the package properly for future transportation needs.)

2.2 Parts list

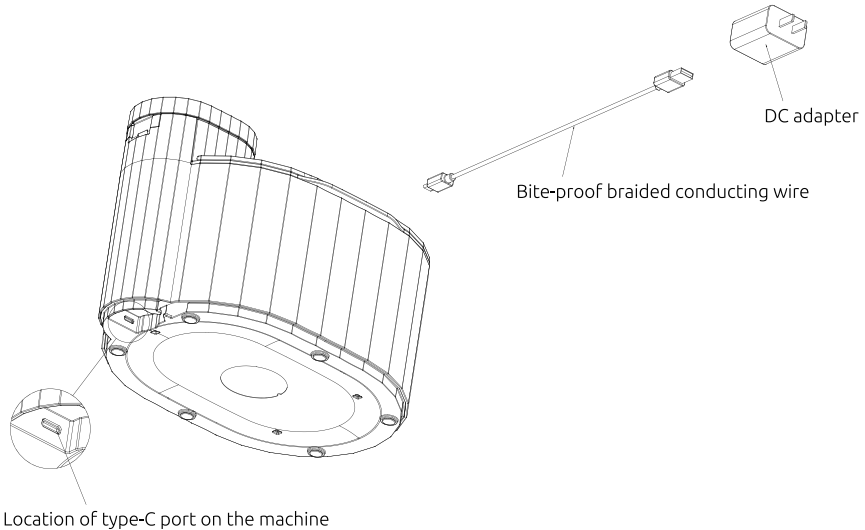


2.3 Packing list

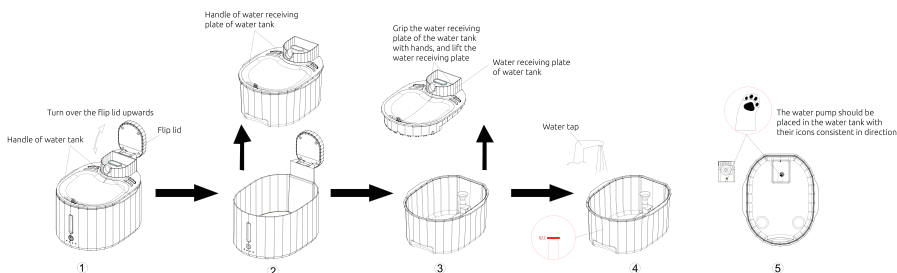
Name	Quantity
Pet water purifier	1
DC adapter	1
Bite-proof braided conducting wire	1
Operation manual	1
#1 filter element	1
#2 filter element	1

2.4 Installation

1. After taking the product out of the package, place the product on the flat floor (there is 100~240V 50Hz/60Hz municipal power supply within 1.5m; it is required to avoid direct sunlight or heavy lamp-black), insert the type-C interface of the bite-proof braided conducting wire into the type-C port of the pet water purifier, insert the USB interface into the adapter port, and insert the adapter into the power socket.



2. Open the flip lid upwards, carry the handle of the water tank with hands, lift the water tank away from the pet water purifier, and then bring the water tank to the side of water receiving pool; grip the water receiving plate of the water tank with hands, lift the water receiving plate, and then place it beside the water receiving pool; place the water tank under the municipal water tap to receive water (Note: 1. The water storage height in the water tank should be neither higher than the maximum water level (MAX) nor lower than the minimum water level (MIN). 2. The water temperature should be no higher than 30°C, to prevent scald in oral cavity of pet); after the tank is filled with water, assemble the water tank into the pet water purifier, and cover with the flip lid. (Note: If the water pump is removed from the water tank for cleaning and then replaced in the water tank, the icon on the water pump should be consistent in direction with the icon on the water tank during placement.)



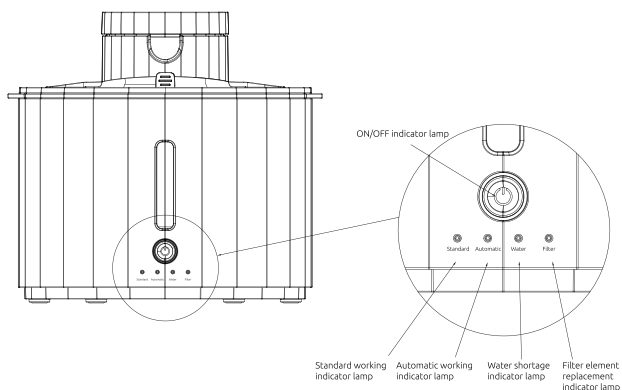
2.5 Operation

1. After pressing the ON/OFF key, the machine will enter the "standard" mode; after the "standard" indicator lamp is on in white, the machine will continually spray water.

2. When the machine is in "standard" mode, after pressing the ON/OFF key again, the machine will enter "automatic" mode; after the "automatic" indicator lamp becomes on in green, the machine will intermittently (spraying for 2 minutes, and then stopping for 2 minutes) spray water.

3. When the machine is in "automatic" mode, after pressing the ON/OFF key again, the machine will enter the off state.

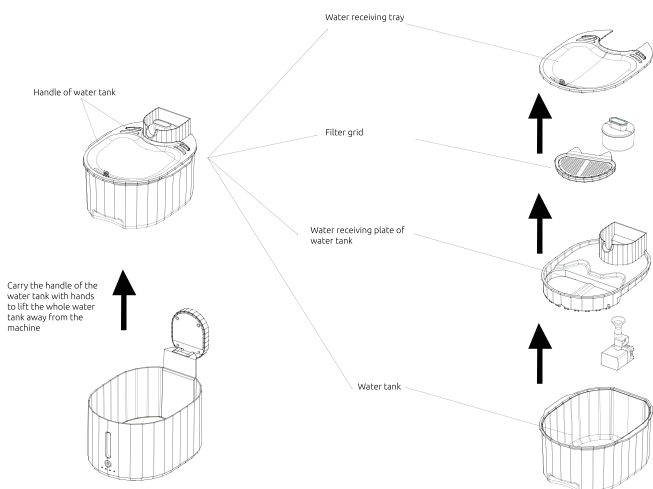
Note: When the "water shortage" indicator lamp is red, it indicates that the water tank is short of water; please add water to the water tank in time (it is required to discard the residual water in the water tank before adding water).



3. Cleaning and Maintenance

3.1 Cleaning of water tank

Before cleaning the water tank, it needs to turn off the water purifier. Unplug the adapter from the socket, pinch the handle of the water tank, take the whole tank out of the machine, bring the water tank to the side of the water receiving pool, flush such parts as water receiving tray, filter grid, filter plate of water tank and water tank one by one and wipe them with clean rag, and then assemble them into the base. (Note: The base cannot be flushed and then wiped, but its surface can be wiped with clean rag only, to prevent water from entering the internal circuit and bring damage to the machine.)



3.2 Replacement of filter elements

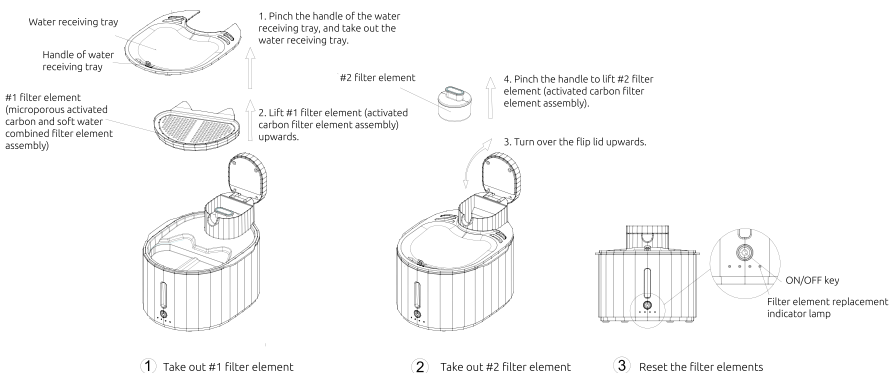
When the "filter element" indicator lamp of the machine is red, it indicates that the filter elements of the water purifier need to be replaced in time.

3.2.1 Pinch the handle of the water receiving tray, lift the water receiving tray slowly (to prevent the water in the water receiving tray from splashing); pinch the edge of #1 filter element (microporous activated carbon and soft water combined filter element assembly) for lifting upwards to take out #1 filter element;

3.2.2 Turn over the flip lid upwards for opening, pinch the handle of #2 filter element (activated carbon filter element assembly) for lifting upwards to take out #2 filter element.

3.2.3 After replacement with new filter elements, it needs to operate the indicator lamp on the machine for resetting, to ensure that the machine re-monitor the life of the filter elements. Operation method: After the normal start of the machine, the "water shortage" indicator lamp is red; after long press on the ON/OFF key for 3S, the "filter element" red indicator lamp is off, which indicates that the replacement and reset of the filter elements are completed.

Note: During replacement of filter elements, the residual water in the filter elements will flow out and might wet the table or the floor; please clean up in time.



Note: If the filter elements are not replaced regularly, the filtering effect of the product might be reduced, and the water outlet performance of the product might be affected.

Filter element	Name	Recommended replacement cycle
#1 filter element	CJ501 microporous activated carbon and soft water combined filter element assembly	2 months
#2 filter element	CJ501 activated carbon filter element assembly	2 months

4. Trouble Shooting

Before entrusting a maintenance department, please check the following:

Trouble	Possible reason	Shooting
The machine cannot be turned on	Power-off	Confirm whether the machine is power-on
	The USB wire is damage	Confirm whether the USB data line is electrified
The water is little or there is no water flowing out	The water tank is short of water or the water level of the water tank is too low	Confirm whether the water shortage indicator lamp is red, and add water as appropriate
	The installed water pump is dislocated	Make the icon on the water pump consistent in direction with the icon on the water tank during placement
	The filter elements are blocked or exceed their service life	Replace #1 and #2 filter elements
The machine is spilling water	The surface smudginess of the filter elements affect their seepage effect	Replace the filter elements in time

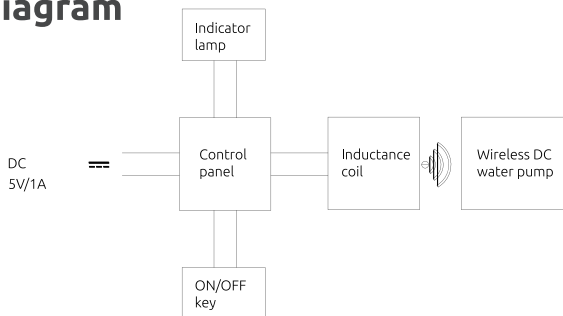
Undesirable odor	Not used for a long time	Discard the residual water in the water tank, flush the water tank and filter elements with running water, turn on the machine for half-hour empty running, and then add clear water before use.
------------------	--------------------------	--

If there is any other trouble, special tools might be required; please go to the specified after-sales maintenance point for maintenance or replacement.

5. Technical Parameters

Product name	Magic clean pet water purifier	Size	267mm*197mm*182mm
Type of power supply	AC 100V~240V 50Hz/60Hz	Noise	≤35dB
Output of adapter	DC 5V=1A	Filtration technology	Microporous activated carbon and soft water combined filter element assembly
Volume of water tank	2.5L		Activated carbon filter element assembly

6. Circuit Diagram



7. Harmful Substances

Part name	Harmful Substances					
	Pb	Hg	Cd	Cr (VI)	PBB	PBDE
PCBA and components	<input type="radio"/>	<input type="radio"/>	<input type="radio"/>	<input type="radio"/>	<input type="radio"/>	<input type="radio"/>
Data line	<input type="radio"/>	<input type="radio"/>	<input type="radio"/>	<input type="radio"/>	<input type="radio"/>	<input type="radio"/>
Water pump	<input type="radio"/>	<input type="radio"/>	<input type="radio"/>	<input type="radio"/>	<input type="radio"/>	<input type="radio"/>
Filter elements	<input type="radio"/>	<input type="radio"/>	<input type="radio"/>	<input type="radio"/>	<input type="radio"/>	<input type="radio"/>
Housing	<input type="radio"/>	<input type="radio"/>	<input type="radio"/>	<input type="radio"/>	<input type="radio"/>	<input type="radio"/>
Other accessories	<input type="radio"/>	<input type="radio"/>	<input type="radio"/>	<input type="radio"/>	<input type="radio"/>	<input type="radio"/>
<p>This table has been prepared in accordance with ROHS:2002/95/EC of the European Union.</p> <p><input type="radio"/>: It indicates that the content of the substance in all homogeneous materials of the part is below the limits specified in ROHS:2002/95/EC.</p>						

8. After-sales Support

User can enjoy one-year free warranty from the date of purchase. This card and valid document(s) are required for warranty (if you are a foreign customer, please send this card together with the valid purchase document(s) for warranty).

Warranty Card

Product name			
Product number		Warranty period	MM/DD/YY
Vendor name			
Vendor address			
Customer name		Date of purchase	MM/DD/YY
Customer address			
Contact number			

The following are not covered by our warranty:

1. Damage caused by a human factor, e.g. damage caused by use under abnormal conditions or not in accordance with the operation manual, or damage caused by improper custody.
2. Both #1 and #2 filter elements are consumables, and they are not within the scope of free maintenance service.
3. User disassembles, maintains or refits the machine without permission, or does not have the warranty card and valid purchase document.
4. Damage caused by poor transportation or irresistible factor (e.g. fire, flood, lightning stroke, earthquake or any other natural disaster).

The Company reserves the right to modify and interpret the above terms