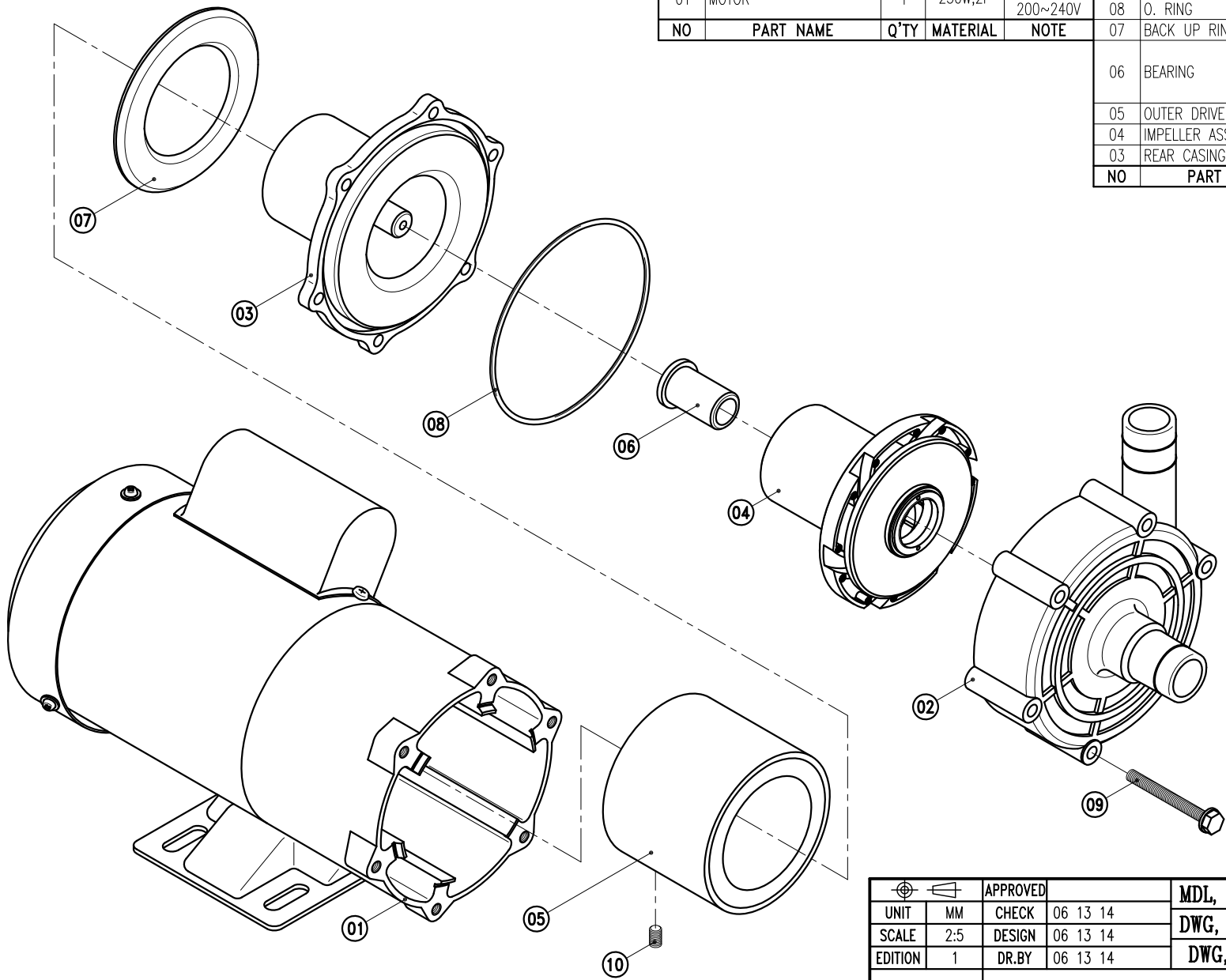


02	FRONT CASING	1	PPG	HOSE THREAD	10	SET SCREW	2	S435	M6X10
01	MOTOR	1	250W,2P	100~120V	09	HEAXGON HEAD BOLT w/t PLAIN WASHER	6	SUS304	M6X55
				200~240V	08	O. RING	1	FKM	G110
NO	PART NAME	Q'TY	MATERIAL	NOTE	07	BACK UP RING	1	SUS304	ø98X4.5
06	BEARING	1		CERAMIC					ø25X35
				CARBON					
				RULON					
05	OUTER DRIVE RING	1	ADC-12						ø86X86
04	IMPELLER ASS'Y	1	PPG						
03	REAR CASING	1	PPS						ø123X75
NO	PART NAME	Q'TY	MATERIAL	NOTE					



HOSE: 26mm X 26mm
G : 1" X 1"
NPT : 1" X 1"

APPROVED				MDL, NAME	275PS
UNIT	MM	CHECK	06 13 14	DWG, NAME	DECOMPOSITION DRAWING
SCALE	2:5	DESIGN	06 13 14	DWG, NO.	T3272184
EDITION	1	DR.BY	06 13 14		A3

TECHNIFLO®