

WORKSTEAD



PARK II
white enamel

WORKSTEAD



PARK II
black enamel

WORKSTEAD

PARK II

hardwired

Description

The PARK II incorporates a domed hand-blown milk glass shade atop a slender enameled base. Referencing porcelain fixtures of the pre-war period, the iconic sconce has an integrated dimmer knob, for a tactile experience. Made in the USA. UL Listed. Damp Rated upon request.

Finish Options

- White Enamel
- Black Enamel
- Brushed Nickel
- Hewn Brass
- Hand Finished Bronze

Dimensions

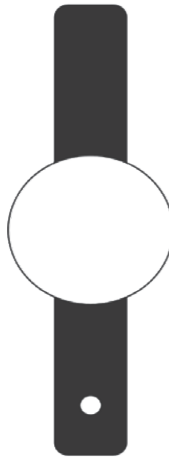
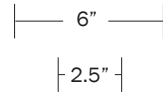
- Overall Height - 18"
- Glass Width - 6"
- Fixture Body Width - 2.4"
- Depth - 5"

Weight

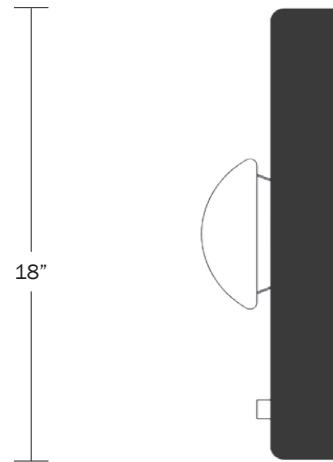
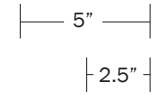
3 lbs

Lamp

- 60 Watt Incandescent Max
- 4.5W Screw Base
- Dimmable LED Bulb Included
- 40 Watt Equivalent
- 300 Lumens
- 2700K Color Temperature
- Bulb Life 35,000 Hours
- 110/120V, E26
- 220/240V, E27
- UL/CE Listed
- Requires 2"x 4" Single Gang Junction Box
- Custom Backplate Extensions Available
- Damp Rated Upon Request



front

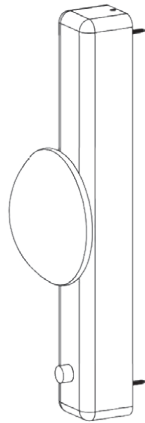
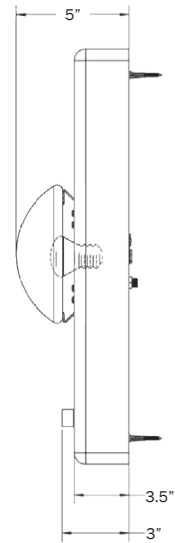
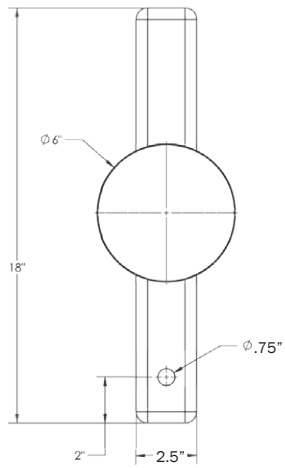


side

18"



WORKSTEAD



WORKSTEAD

PARK II ALTERNATE BACKPLATE

