

**Materials Book** / 2022

VALID FROM 01. 07. 2022

**prostoria**



# Content

---

<b>4</b>	Keep in Mind
<b>5</b>	Materials & Maintenance
<b>6</b>	Solid Wood Oils & Lacquers collection
<b>7</b>	Table tops
<b>9</b>	Metal colour Collection
<b>10</b>	Upholstery & Cushions
<b>12</b>	Product Chart: Upholstery Collection
<b>16</b>	Fabrics & Leathers specifications
<b>20</b>	· Fabric Category 200
<b>24</b>	· Fabric Category 300
<b>33</b>	· Fabric Category 400
<b>42</b>	· Fabric Category 500
<b>48</b>	· Fabric Category 600
<b>49</b>	· Fabric Category 700
<b>52</b>	· Leather Category 80
<b>58</b>	· Outdoor fabric category 300
<b>62</b>	· Outdoor fabric category 400
<b>64</b>	· Outdoor fabric category 600
<b>65</b>	· Outdoor fabric category 700

# Keep in Mind when making your Choice

---

## **COF - CUSTOMER OWN FABRIC**

- price from the Price List refers to fabrics without any patterns
- all orders submitted in COF needs to be approved from the manufacturer based on the delivered sample, min. size 15x20 cm
- for use of the fabrics with pattern it's necessary to submit a min. 1 ml sample, in order to make estimation of consumption of the fabric and additional work that will determine the price
- Prostoria is not responsible for any claims related to the fabric quality
- fabric needs to be delivered min. 15 days prior to the dispatch date

## **COL - CUSTOMER OWN LEATHER**

- possibility of using leather selected by the customer is available solely with prior submission of a sample, size of approx. 20 x 30 cm
- leather consumption depends on the leather quality; natural or prefabrication flaws might increase required quantities
- Prostoria is not responsible for any claims related to the leather quality
- leather needs to be delivered min. 15 days prior to the dispatch date

# Materials & Maintenance

---

To maintain the quality and durability of your product for as long as possible, you should follow these basic and simple guidelines:

- avoid placing the product near a source of heat and exposing it to direct sunlight as this may cause alternations in the tone and affect the hardness of the product.
- when moving the product, be careful not to drag it on the floor as such action may result in damage both to the product and the floor
- perform regular checks of the condition of the sliders as it may result in damage of the product and the floor; you can purchase additional or new sliders (plastic or felt) at the nearest salon or at the dealer where you purchased the product
- for stackable products, check the condition of the safety components; if they fall out, the products may be damaged, and you should contact the nearest salon or the dealer where you've purchased the product
- chairs and easy chairs should be stacked carefully and according to the listed stacking number to avoid any possibility of damage
- for tables and coffee tables, avoid partial covering of the surface as this may cause discoloration of the surface
- for surfaces used for shelving, be careful not to damage the surface with sharp or damp objects
- suitably protect and store products for outdoor use over winter or against adverse conditions; we recommend storing those products in a dry and airy place or using protective covers
- avoid improper use of the product, such as sitting on a backrest or armrest, or swinging or standing on a chair
- avoid placing greasy, wet, hot or cold objects directly on the solid wood surfaces, as they may leave a permanent trace

## PRODUCT CONSTRUCTIONS

The inner construction of our furniture is made of panel materials (plywood) and/or metal elements, which provide the basic shape of the product. Seat and backrest supports (wave springs, elastic bands, goodside® slats), together with the foam (HR foam, polyurethane foam), make our furniture comfortable and durable.

Foams are high quality polymer materials with high elasticity and resistancy to permanent deformation. HR foam is produced by cold process based on water and does not contain any harmful chemicals. It has excellent hygienic and antiallergic properties. Polyurethane foam is made of recyclable material. We use cold and polyurethane foams of a wide range of density and hardness to provide a wide selection in obtaining the desired comfort. Moulded polyurethane foam is used in products of specific shape - the construction is soaked in foam which takes the form of a mould into which it is poured. Due to expansion, this process results in the final form ready for upholstery.

Metal parts are made of the highest quality aluminium, carbon steel and stainless steel suitable for outdoor use by the sea.

The fabrics and the leathers in our collection originate from the workshops of the most famous and renown European manufacturers.

We approach the wood as a natural resource with great respect and responsibility. The raw material we use the most is solid wood, especially Slavonian oak. In order to promote sustainable development and environmental protection, we are part of the Slavonian Oak Cluster. We have also introduced the FSC-STD-40-004 V3-0 Certificate to guarantee the sustainable development of forest management. The ISO 14001: 2015 standard sets out requirements for the environmental management system, including the planning, establishment, implementation and monitoring of the environmental management system.

# Materials & Maintenance

## solid wood

Natural imperfections of wood, such as variations in colour and texture, knots and tree rings, are not considered faults and undesirable characteristics but rather values of the natural material used. Our wood is treated with oil or lacquer in such a way that the material appears as naturally as possible, emphasising the appearance of an open tree ring. Colour lacquer does not completely fill the pores of wood to highlight the natural quality of the material, and tree rings remain visible. There are no visible tree rings in lacquered plywood. Oil and lacquer on all wooden surfaces always give matte effect, which is Prostoria's visual standard for the processing and protection of the wood.

Outdoor wood, especially teak, has an even more pronounced change in the tone and intensity of visible tree rings over time, which is not considered as a flaw but a natural quality and refinement of the product.

high quality oil



OAK LIGHT



OAK NATURE



OAK DARK



WALNUT  
EUROPEAN

outdoor oil



LARCH



IROKO



TEAK

lacquer matte



OAK LIGHT



OAK NATURE



OAK DARK

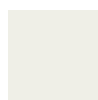


ASH



WALNUT  
EUROPEAN

colour lacquer matte



grey white



beige



yellow



red



red brown



light green



blue



sapphire blue



antique green



dark grey



black

Wipe the surface regularly with a clean and dry cloth. If the surface of the product is dirty, you can wipe it using a well-drained cloth soaked in water or a light neutral soap. Remove any soapy residue immediately. If the surface is slightly damaged or appears matt, we recommend our wood surface maintenance kit. Avoid products containing acetone, diluents, ammonia, abrasive detergents or furniture wax. avoid placing greasy, wet, hot or cold objects directly on the solid wood surfaces, as they may leave a permanent trace.

# Materials & Maintenance

## table tops

Fenix NTM is a table top finish in the form of a thin laminate that is pressed to the bottom and top of the mdf. The sides of the mdf are lacquered. Fenix is a durable material that does not show fingerprints. It can be cleaned using a damp soft cloth soaked in warm water or a solution of water and mild detergent. We recommend the use of the Fenix maintenance kit (contact your nearest salon or the dealer where you purchased the product). Damages such as scratches that are not cut in can be treated thermally using an iron and a damp cloth.

### MDF + FENIX NTM



**0720**  
black



**0724**  
dark grey



**0725**  
light grey



**0718**  
beige



**0032**  
white

### TRESPA HPL

Trespa Meteon outdoor table tops have a compressed surface, virtually pore-free, making them impervious to contamination. This is why Trespa Meteon® is highly resistant to most chemicals, including many non-aggressive and aggressive cleaning agents.

Do not use abrasive or polishing cleaners. Use only clean sponges and soft cloths. Algae and mould will not penetrate the pores of the material so they are easy to clean just like dust, stains or fingerprints. You can wash them off using a universal household cleaner. Rinse and wipe the board using a soft cloth to avoid any traces remaining after washing.



**L 90.0.0**  
black



**L 21.5.1**  
grey



**L 05.0.0**  
white

### GLASS

Glass surfaces can be cleaned with a well-drained soft cloth soaked in a mixture of alcohol and water or glass cleaner. Wipe the surface with a dry, lint-free cloth. Avoid products containing acetone, ammonia, chlorine, and solvents, abrasives, and furniture wax.



**PARSOL GREY**



**PARSOL BRONZE**

# Materials & Maintenance

---

## table tops

The quartz tops are made from a mixture of quartz sand or pure quartz, structural polyester resin and color pigments that are stabilized by UV rays. The resin creates flexibility, and the top-making process is strictly controlled and involves compressing the mixture by vibration within vacuum, making the top extremely resistant to mechanical and chemical impacts. The quartz composite top has a shiny, non-porous and very durable work surface that will retain its quality for decades with the same beauty, appearance and impression of natural stone. This non-toxic and environmentally friendly product is resistant to stains from most liquids, it is not porous and it is resistant to heat, acids and impacts, and it is not flammable. To maintain and clean the quartz surfaces, it is enough to use soap and warm water, and a soft microfiber cloth.

### QUARTZ



**BLACK AND  
MORE 625**  
brushed



**BREEZE HULL  
830**  
brushed



**FOSSIL  
SEASHELL 865**  
brushed

### COMPACT BOARDS

Compact boards are high-pressure thermoset laminates (HPL) obtained by pressing under high pressure and high temperature. Refined with decor on both sides, this multi-layer material is at the same time extremely resistant and long-lasting as well as easy to maintain. It also provides high resistance to scratches, wear, solvents, chemicals, moisture and heat. The surface of Compact boards is extremely resistant to dirt, but if necessary it can be treated with standard non-abrasive cleaners.



**COMPACT  
BLACK**



**COMPACT  
WHITE**



# Materials & Maintenance

## metal

All powder coated metal products and elements have a matte finish, which is Prostoria's visual standard used in the processing and protection of metallic materials. Hand-welded metal parts may have minor imperfections that do not affect the quality or function of the product, but are a reflection of the manual work of our craftsmen. Metal products intended for outdoor use have a double finish - a primer for better mechanical resistance and a coloured coating for protection against corrosion.

To clean powder coated metal products use a damp soft cloth soaked in a solution of water and a pH neutral detergent, and wipe using a clean, dry and soft cloth.



white



grey white



light grey



grey



dark grey



beige



black



antique green



yellow



green yellow



red



ruby red



orange



red ochre



red brown



pale english green



light english green



nickel green



pastel blue



blue



sapphire blue

# Materials & Maintenance

---

## upholstery & cushions

Suede and other types of leather may have scars and wrinkles, or minor changes in tone or imperfections that are not considered faults but an anomaly that confirms the natural quality of the material. As such, they are considered a positive feature of the product. It is the responsibility of Prostoria to position such anomalies on less visible parts of the product when tailoring the material.

Some types of fabrics have certain properties due to finishing, such as tufting, dots or other effects on fabrics, etching of velvet, or production methods that are not considered as flaws. For fabrics, suede and other types of leather, each production lot may indicate a slight difference in colour in comparison with the pattern or a product manufactured at an earlier time. To properly maintain the leather and fabrics, visit the manufacturer's website or [www.prostoria.eu](http://www.prostoria.eu) and follow the instructions.

Products made with leather or fabric should not be exposed to direct light and positioned at least 1 meter away from the source of the heat, as those factors may contribute to discoloration or drying of the leather, which can cause cracks.

Upholstered sofas should be vacuumed regularly using a suitable extension and ventilated to prevent deterioration and impurities. Due to use, the fabric will eventually need to be straightened and seams adjusted manually. The folds can be straightened using steam. In case of spillage, remove the liquid immediately by tapping with absorbent paper or cloth. Do not rub the stain!

The velour covers should also be regularly vacuumed or wiped with a cloth, always following the direction of the thread. Aniline leather has no or very light surface protection and, by its nature, gains patina and traces of use over time. Semi-aniline leather has a lightweight surface protection so these furniture sets can be vacuumed and stains cleaned using a damp cloth soaked in the water, a light neutral soap, or a specialized leather care agent. Remove soap marks immediately using a dry, soft, cotton cloth. Be careful not to let too much water soak into the pores. Always remove stains moving from the edge towards the centre of the stain, so as not to expand the affected area. Avoid concentrated detergents or agents containing bleach, ammonia, or products used for cleaning and protecting of clothing and shoes.

The Outdoor textiles are water-repellent and fast drying. They are resistant to negative environmental impacts and damage caused by sun, seawater and chlorine. To find out more about the properties and methods of care and maintenance of the Outdoor textile, visit the website linked below.

Cushions can be filled with 100% feathers and down mixture, or with 100% polyester fibre filling. In order for the cushions to look good and provide comfort for as long as possible, they need to be regularly aerated and their filling shaken, which will allow them to return to their original shape. We recommend rotating the cushions (top-bottom and front-back sides) so that they are equally used on all sides. Cushions filled with feathers have a 100% goose feathers and down filling, without chemical treatment. They should be shaken and tapped regularly to redistribute the filling and reduce the effect of flattening.

For Warranty and Maintenance details, visit:  
[www.prostoria.eu/en/professionals](http://www.prostoria.eu/en/professionals)



# Product Chart:

NOTE - PLUS + HIGHLY RECOMMENDED | DOT • AVAILABLE | X NOT AVAILABLE

	CONTOUR 200	CUBA 200	GANCBIC 200	ATLAS 300	BOHEMIAN 300	CREPE 300	DUFFY 300	GORDON 300	HAKU 300	MYSTIC 300	ORSETTO 300	TUNDRA 300	ARCO 400
ANGLE	•	•	+	•	•	•	•	•	•	•	•	•	+
ABSENT	•	•	•	•	•	•	•	•	X	X	+	•	+
BAVUL	•	•	•	+	+	+	+	+	•	+	+	•	+
BIK CUSHION	+	+	+	+	+	+	+	+	+	+	+	+	+
CLASSIC	•	•	•	•	+	+	+	+	+	•	+	•	+
CLOUD	X	X	•	X	•	•	•	+	•	•	•	•	•
COMBINE	•	X	•	•	+	+	•	+	•	•	+	•	+
COMBO	•	•	•	•	•	•	+	+	•	•	+	•	+
CONVERT	•	•	•	+	•	•	•	•	•	•	•	•	+
DOBRA	•	•	•	+	•	•	•	•	•	•	•	•	•
ECHO	•	X	•	X	•	•	•	+	X	•	+	•	+
ELEGANCE	•	•	+	•	•	•	•	+	•	•	•	•	+
ELEGANCE LUX	•	X	+	X	•	•	•	+	•	•	+	•	+
FADE	•	•	•	•	•	•	•	•	•	•	•	•	+
IMPRESSION	•	•	+	•	+	+	•	+	X	•	+	•	+
JUGO	X	X	X	X	X	X	X	X	X	X	X	X	X
KLASTER	•	•	•	•	•	•	•	•	•	•	+	•	+
KONTRAPUNKT	•	•	•	•	•	•	•	+	•	•	+	•	+
LAYOUT	•	•	•	•	•	•	•	+	•	•	+	•	•
MATCH	•	•	•	•	•	•	+	+	•	•	+	+	+
MONK EASY CHAIRS, CHAIRS, BARSTOOLS WITH BACKREST	•	•	•	•	•	•	•	+	•	•	+	•	+
MONK BARSTOOLS	•	•	•	+	•	•	•	+	+	•	+	•	+
MONK BENCH CUSHION	•	•	•	•	•	•	•	+	•	•	+	•	+
OBLIKANT COVER	•	•	•	+	•	•	•	+	+	•	+	•	+
OBLIQUE	•	•	•	+	•	•	•	•	•	•	•	•	+
OSMO CUSHION	X	X	X	X	X	X	X	X	X	X	X	X	X
PILUN	•	•	•	+	•	•	•	•	•	•	+	•	+
PIL-LOW	•	•	•	•	X	X	X	X	•	•	X	X	+
POLYGON	•	•	•	+	•	•	•	•	•	•	•	•	+
REVOLVE	•	•	•	•	•	•	•	•	X	•	•	X	+
RHOMB CUSHION	•	•	•	+	•	•	•	•	•	•	•	•	+
ROSTRUM	•	•	•	•	•	•	•	•	•	•	•	•	+
SABOT	•	•	•	•	+	+	•	+	•	•	•	•	+
SEAM	•	•	•	•	+	+	•	•	•	•	•	•	+
SEGMENT	•	•	•	•	•	•	•	•	•	•	•	•	+
STRAIN EASY CHAIR	•	•	•	+	•	•	•	+	•	•	+	•	+
STRAIN LOW CHAIR	•	•	•	+	•	•	•	•	•	•	•	•	+
STRAIN & UNSTRAIN CHAIRS	•	•	•	+	•	•	•	•	•	+	•	•	+
UMOMOKU	X	X	X	X	X	X	X	X	X	X	X	X	X
UP-LIFT	•	•	•	•	•	•	•	•	•	•	•	X	•
TINKER	•	X	•	•	+	+	+	+	X	•	+	•	+
TOGGLE	•	•	+	•	•	•	•	+	•	•	+	•	+
TRIFIDAE	•	•	•	•	•	•	•	•	•	•	•	•	+
TRIFIDAE CHAIR & EASY CHAIR	•	•	•	•	•	•	•	•	•	X	•	•	+
CUSHIONS	•	•	+	•	+	+	+	+	•	+	+	•	+

# Product Chart:

NOTE - PLUS + HIGHLY RECOMMENDED | DOT • AVAILABLE | X NOT AVAILABLE

	CREDO	DIVINA 3	DIVINA MD	DIVINA MELANGE	NOVUM	PLANUM	HALINDAL 65	MIZMAZE	MOSS	STEELCUT TRIO 3	UNIFORM MELANGE	CODA 2	SISU
	400	400	400	400	400	400	500	500	500	500	600	700	700
ANGLE	+	+	+	+	•	•	+	•	•	+	•	+	•
ABSENT	+	•	•	•	+	+	+	+	•	•	+	•	•
BAVUL	+	+	+	+	•	+	+	+	•	•	•	•	•
BIK CUSHION	+	•	•	•	•	•	+	•	+	•	•	•	•
CLASSIC	+	•	•	•	•	•	+	•	+	•	•	•	•
CLOUD	+	X	X	X	X	X	+	X	+	X	X	+	+
COMBINE	+	•	•	•	•	X	+	•	+	•	•	+	+
COMBO	+	•	•	•	+	•	+	•	+	•	•	•	•
CONVERT	•	+	+	+	+	•	+	•	•	+	•	•	•
DOBRA	+	+	+	+	•	•	+	•	•	•	•	+	•
ECHO	+	•	•	•	•	X	+	•	+	•	•	+	•
ELEGANCE	+	•	•	•	•	•	+	•	+	•	•	+	•
ELEGANCE LUX	+	•	•	•	•	X	+	•	+	•	•	+	•
FADE	+	+	+	+	•	•	+	•	+	•	•	•	•
IMPRESSION	+	•	•	•	•	•	+	•	+	•	•	+	+
JUGO	X	X	X	X	X	X	X	X	X	X	X	X	X
KLASTER	•	+	+	+	•	•	+	+	+	•	+	+	•
KONTRAPUNKT	+	•	•	•	•	•	+	•	+	+	•	•	•
LAYOUT	+	•	•	•	•	•	+	•	+	•	•	•	•
MATCH	+	•	•	•	+	•	+	•	+	•	•	+	+
MONK EASY CHAIRS, CHAIRS, BARSTOOLS WITH BACKREST	+	+	+	+	•	•	+	+	+	+	+	•	•
MONK BARSTOOLS	+	+	+	+	•	•	+	+	+	+	+	•	•
MONK BENCH CUSHION	+	+	+	+	•	•	+	•	+	+	•	•	•
OBLIKANT COVER	+	+	+	+	•	•	+	•	+	+	•	•	•
OBLIQUE	+	+	+	+	•	•	+	•	•	+	•	•	•
OSMO CUSHION	X	X	X	X	X	X	X	X	X	X	X	X	X
PILUN	•	+	+	+	•	•	+	•	+	+	•	•	•
PIL-LOW	•	+	+	+	+	•	+	•	X	•	•	•	•
POLYGON	+	•	•	•	+	•	+	+	•	+	•	•	•
REVOLVE	•	+	+	+	•	•	+	•	•	•	•	X	X
RHOMB CUSHION	•	+	+	+	•	•	+	•	•	+	•	+	•
ROSTRUM	+	+	+	+	•	•	+	•	•	+	•	•	•
SABOT	+	+	+	+	•	•	+	•	+	•	•	+	•
SEAM	+	+	+	+	•	•	+	•	+	+	•	•	•
SEGMENT	+	+	+	+	•	•	+	•	•	+	•	•	•
STRAIN EASY CHAIR	+	+	+	+	•	•	+	•	+	•	•	+	•
STRAIN LOW CHAIR	+	+	+	+	•	•	+	•	•	+	•	•	•
STRAIN & UNSTRAIN CHAIRS	+	+	+	+	+	•	+	•	•	+	•	•	•
UMOMOKU	X	X	X	X	X	X	X	X	X	X	X	X	X
UP-LIFT	+	+	+	+	•	•	+	•	•	•	•	•	•
TINKER	+	•	•	•	•	•	+	•	+	•	•	+	+
TOGGLE	+	+	+	+	•	•	+	•	+	+	•	•	•
TRIFIDAE	+	+	+	+	+	•	+	•	•	•	+	•	•
TRIFIDAE CHAIR & EASY CHAIR	+	+	+	+	+	•	+	•	•	•	+	•	•
CUSHIONS	+	+	+	+	+	•	+	+	+	•	•	+	+

# Product Chart:

NOTE - PLUS + HIGHLY RECOMMENDED | DOT • AVAILABLE | X NOT AVAILABLE

	CERVO	DIVINA	ELMO-SADDLE	TUNDRA	ACERO OUTDOOR	AMACHE OUTDOOR	BERGUD OUTDOOR	PATIO OUTDOOR	TAN TAN OUTDOOR	ZAGORA OUTDOOR	RECCO OUTDOOR	LIBERA OUTDOOR
	80	80	80	80	300	300	300	300	400	400	600	700
3ANGLE	•	•	•	×	×	×	×	×	×	×	•	•
ABSENT	×	×	×	×	×	×	×	×	×	×	•	•
BAVUL	×	×	×	×	×	×	×	×	×	×	•	•
BIK CUSHION	•	•	×	•	×	×	×	×	×	×	•	•
CLASSIC	•	•	•	•	×	×	×	×	×	×	•	•
CLOUD	+	+	×	+	×	×	×	×	×	×	+	+
COMBINE	•	•	•	•	×	×	×	×	×	×	+	+
COMBO	•	•	•	•	×	×	×	×	×	×	•	•
CONVERT	•	+	•	•	×	×	×	×	×	×	•	•
DOBRA	+	+	+	+	×	×	×	×	×	×	+	+
ECHO	•	+	×	•	×	×	×	×	×	×	•	•
ELEGANCE	+	+	•	+	×	×	×	×	×	×	•	•
ELEGANCE LUX	+	+	•	+	×	×	×	×	×	×	•	•
FADE	×	×	×	×	×	×	×	×	×	×	+	+
IMPRESSION	×	×	×	×	×	×	×	×	×	×	+	+
JUGO	×	×	×	×	+	+	+	+	+	+	+	+
KLASTER	×	×	×	×	×	×	×	×	×	×	+	+
KONTRAPUNKT	+	+	×	•	×	×	×	×	×	×	+	+
LAYOUT	×	×	×	×	×	×	×	×	×	×	+	+
MATCH	•	•	•	•	×	×	×	×	×	×	+	+
MONK EASY CHAIRS, CHAIRS, BARSTOOLS WITH BACKREST	×	×	×	×	×	×	×	×	×	×	+	+
MONK BARSTOOLS	•	•	×	•	×	×	×	×	×	×	+	+
MONK BENCH CUSHION	•	•	•	•	×	×	×	×	×	×	+	+
OBLIKANT COVER	×	×	×	×	×	×	×	×	×	×	+	+
OBLIQUE	×	×	×	×	×	×	×	×	×	×	•	•
OSMO CUSHION	×	×	×	×	+	+	+	+	+	+	+	+
PIJUN	×	×	×	×	×	×	×	×	×	×	+	+
PIL-LOW	×	×	×	×	×	×	×	×	×	×	×	×
POLYGON	•	•	•	×	+	+	+	•	•	+	•	•
REVOLVE	×	×	×	×	×	×	×	×	×	×	×	×
RHOMB CUSHION	+	+	+	+	+	+	+	+	+	+	+	+
ROSTRUM	×	×	×	×	×	×	×	×	×	×	•	•
SABOT	×	×	×	×	×	×	×	×	×	×	•	•
SEAM	•	•	×	•	×	×	×	×	×	×	•	•
SEGMENT	•	•	×	•	×	×	×	×	×	×	•	•
STRAIN EASY CHAIR	•	•	×	•	×	×	×	×	×	×	•	•
STRAIN LOW CHAIR	•	•	×	•	×	×	×	×	×	×	•	•
STRAIN & UNSTRAIN CHAIRS	•	•	×	•	×	×	×	×	×	×	•	•
UMOMOKU	×	×	×	×	+	+	+	+	+	+	+	+
UP-LIFT	×	×	×	×	×	×	×	×	×	×	•	•
TINKER	•	•	×	•	×	×	×	×	×	×	•	•
TOGGLE	•	•	•	•	×	×	×	×	×	×	•	•
TRIFIDAE	•	•	×	×	×	×	×	×	×	×	•	•
TRIFIDAE CHAIR & EASY CHAIR	×	×	×	×	×	×	×	×	×	×	•	•
CUSHIONS	+	•	•	•	•	•	•	•	•	•	•	•



# Fabrics & Leathers Specifications

fabric			collection	specification	pilling	martindale cycles	light fastness	maintenance
200	<b>CONTOUR</b>	GABRIEL	FABRIC	100% polyester	4-5	85.000	5-7	
200	<b>CURA</b>	GABRIEL	FABRIC	98% post-consumer recycled polyester, 2% polyester	4-5	100.000	5-8	
200	<b>GARC BIC</b>	TORRI LANA	FABRIC	100% cotton	-	30.000	4-5	
300	<b>ATLAS</b>	KVADRAT	FABRIC	90% new wool worsted, 10% nylon	4-5	100.000	6-7	
300	<b>BOEMIAN</b>	TORRI LANA	FABRIC	5% cotton, 13% linen, 25% viscose, 15% wool, 25% polyester, 15% polycarbonate, 2% polyamide	-	45.000	4-5	
300	<b>CREPE</b>	TORRI LANA	FABRIC	50% cotton, 33% viscose, 17% linen	3-4	35.000	4-5	
300	<b>DUFFY</b>	MERCIS	FABRIC	81% polyester, 19% cotton	4	100.000	6	
300	<b>GORDON</b>	MARIO SIRTORI	FABRIC	31% viscose, 28% cotton, 20% wool, 10% polyamide, 6% polyester, 5% other	3-4	30.000	5	
300	<b>HAKU</b>	KVADRAT	FABRIC	100% polyurethane, 100% polyester (backing)	5	100.000	7	
300	<b>MYSTIC</b>	MERCIS	FABRIC	100% polyester	5	150.000	4-5	
300	<b>ORSETTO</b>	MARIO SIRTORI	FABRIC	34% viscose, 33% acrylic, 17% wool, 8% polyester, 4% flax, 4% cotton	5	80.000	4-5	
300	<b>TUNDRA</b>	MARIO SIRTORI	FABRIC	42% viscose, 36% cotton, 16% acrylic, 6% polyester	3-4	30.000	5	
400	<b>ARCO</b>	ROHI	FABRIC	95% virgin wool, 5% polyamide	4-5	70.000	5	
400	<b>CREDO</b>	ROHI	FABRIC	95% virgin wool, 5% polyamide	4-5	100.000	5	
400	<b>DIVINA 3</b>	KVADRAT	FABRIC	100% new wool	3	45.000	5-6	
400	<b>DIVINA MD</b>	KVADRAT	FABRIC	100% new wool	3	45.000	5-6	
400	<b>DIVINA MELANGE</b>	KVADRAT	FABRIC	100% new wool	3	45.000	6-7	
400	<b>NOVUM</b>	ROHI	FABRIC	96% virgin wool, 4% polyamide	4-5	90.000	5-8	
400	<b>PLANUM</b>	KVADRAT	FABRIC	44% new wool, 42% polyester, 14% nylon	4	100.000	5-6	
500	<b>HALLINGDAL 65</b>	KVADRAT	FABRIC	70% new wool, 30% viscose	3-4	100.000	7	
500	<b>MIZMAZE</b>	KVADRAT	FABRIC	60% polyester, 30% wool, 10% nylon	4	100.000	6	
500	<b>MOSS</b>	KVADRAT	FABRIC	52% cotton, 22% viscose, 14% polyacrylic, 6% linen, 3% polyester 3% nylon	4-5	50.000	5-7	
500	<b>STEELCUT TRIO 3</b>	KVADRAT	FABRIC	90% new wool worsted, 10% nylon	4	100.000	6-7	
600	<b>UNIFORM MELANGE</b>	KVADRAT	FABRIC	68% wool, 22% polyamide, 10% polyester	4	100.000	6	
700	<b>CODA 2</b>	KVADRAT	FABRIC	90% new wool, 10% nylon	4	100.000	6	
700	<b>SISU</b>	KVADRAT	FABRIC	91% new Norwegian wool, 8% new New Zealand wool, 1% nylon	3-4	70.000	7	



leather		
80	<b>CERVO</b>	STOLZ
80	<b>DIVINA</b>	STOLZ
80	<b>ELMOSADDLE</b>	ELMO
80	<b>TUNDRA</b>	STOLZ

indoor & outdoor fabric		
300	<b>ACERO</b>	MARIA-FLORA
300	<b>APACHE</b>	MARIA-FLORA
300	<b>ERFOUD</b>	MARIA-FLORA
300	<b>PATIO</b>	KVADRAT
400	<b>TAN TAN</b>	MARIA-FLORA
400	<b>ZAGORA</b>	MARIA-FLORA
600	<b>ROCOÇÒ</b>	DEDAR
700	<b>LIBERA</b>	DEDAR

collection	specification
LEATHER	aniline leather, slightly pigmented
LEATHER	aniline leather, organic pigment
LEATHER	aniline leather, organic pigment
LEATHER	aniline leather, organic pigment

collection	specification	colour fastness uv outdoor	martindale cycles	colour fastness dry & wet friction	maintenance
OUTDOOR	100% solution dyed arcylic	-	40.000	7-8	
OUTDOOR	100% solution dyed arcylic	-	45.000	7-8	
OUTDOOR	100% solution dyed arcylic	-	50.000	7-8	
OUTDOOR	100% trevira CS	4-5	50.000	7	
OUTDOOR	100% solution dyed arcylic	-	50.000	7-8	
OUTDOOR	100% solution dyed arcylic	-	50.000	7-8	
OUTDOOR	97% polypropylene, 3% polyester	-	40.000	-	
OUTDOOR	100% polypropylene	-	40.000	-	

Do not wash in water

Wash in cold water

Hand wash only

Do not bleach

Bleach

Do not tumble dry

Tumble dry

Machine wash at 30°C max

Machine wash at 30°C max, mild process

Machine wash at 30°C max, very mild process

Machine wash at 40°C max

Dry clean

Do not dry clean

Do not centrifuge

To iron use cool setting (max 110°C)

To iron use medium setting (max 150°C)

To iron use hot setting (max 200°C)

Do not iron

Iron on reverse side

Dry clean using perchloroethylene only

Dry clean with perchloroethylene, use precautions



# **Fabric collection**

# Category 200

## Contour by Gabriel

collection: Fabric  
composition: 100% polyester  
width: 140 cm +/- 2 cm  
piling: 4-5  
abrasion resistance: 85,000 cycles  
light fastness: 5-7  
rubbing fastness: 4-5 dry and wet



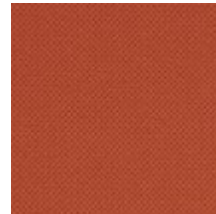
**61138**



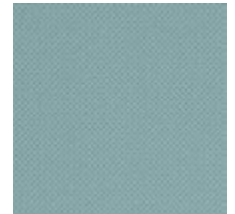
**61215**



**62041**



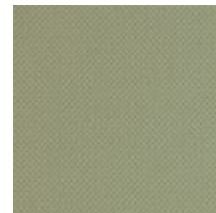
**61216**



**66213**



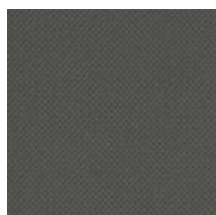
**67033**



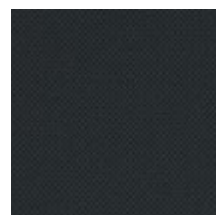
**68238**



**68239**



**60003**



**68130**

# Category 200

## Cura by Gabriel

collection: Fabric  
composition: 98% post-consumer recycled polyester / 2% polyester  
width: 140 cm +/- 2 cm  
piling: 4-5  
abrasion resistance: 100.000 cycles  
light fastness: 5-8  
rubbing fastness: 4-5 dry and wet



60000



61168



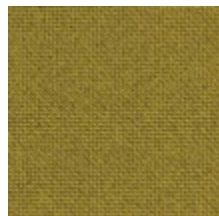
61259



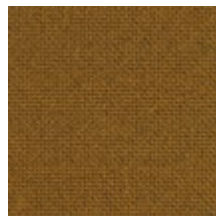
61169



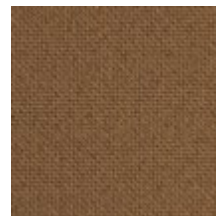
62083



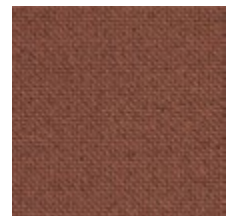
62084



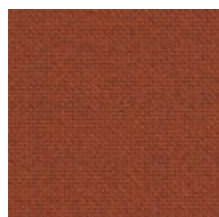
62082



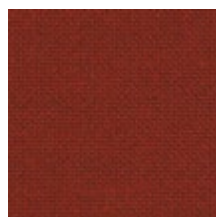
61260



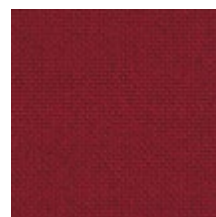
61257



63078



63012



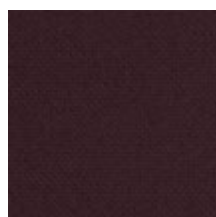
64013



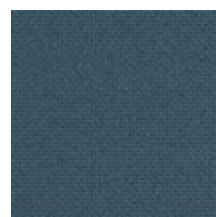
64194



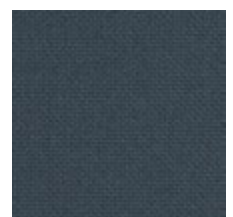
64195



65137



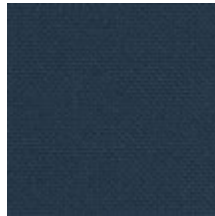
66167



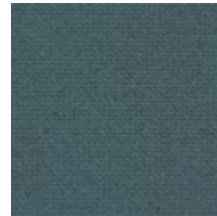
66166

# Category 200

## Cura by Gabriel



66170



68187



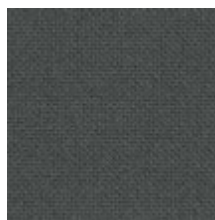
68264



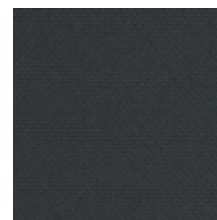
60112



60110



60109



60019



60999

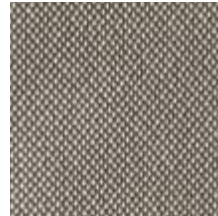
# Category 200

## Garc Bic by Torri Lana

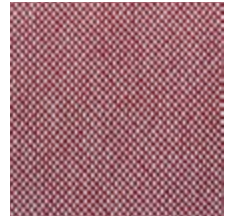
collection: Fabric  
composition: 100% cotton  
width: 140 cm +/- 3 cm  
abrasion resistance: 30.000 cycles  
light fastness: class 4-5



111



230



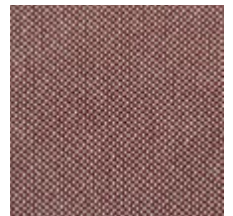
420



236



232



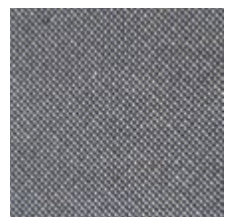
234



238



421



422

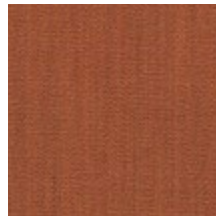
# Category 300

## Atlas by Kvadrat

collection: Fabric  
composition: 90% new wool worsted,  
10% nylon  
width: 150 cm +/- 2 cm  
piling: 4-5  
abrasion resistance: 100.000 cycles  
light fastness: class 6-7  
rubbing fastness: 4-5 dry and wet



**461**



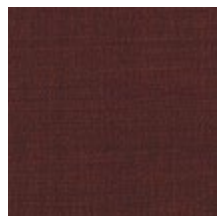
**561**



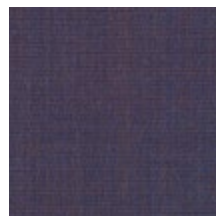
**501**



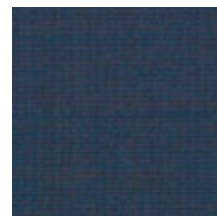
**621**



**681**



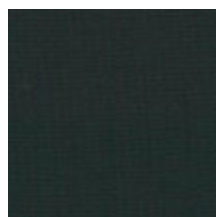
**641**



**861**



**961**



**981**



**111**



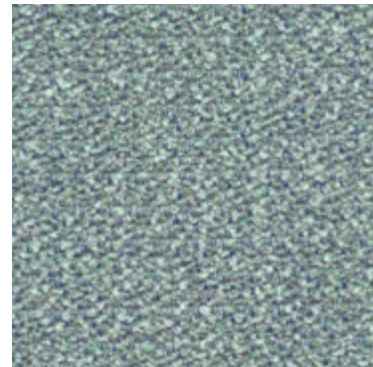
**161**



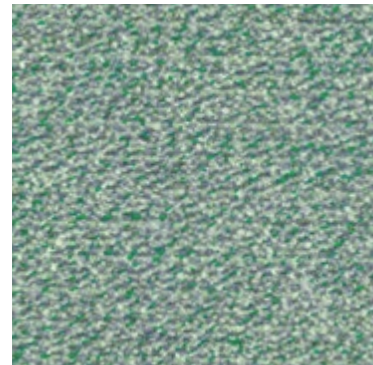
# Category 300

## Boemian by Torri Lana

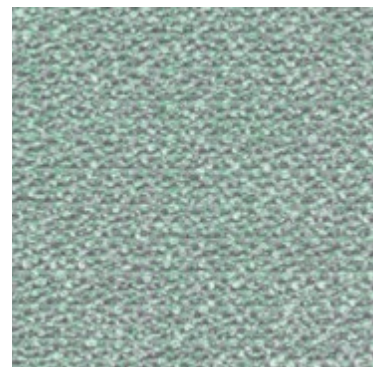
collection: Fabric  
composition: 5% cotton, 13% linen,  
25% viscose, 15% wool, 25% PL, 15% PC, 2% PA  
width: 137 cm +/- 3 %  
abrasion resistance: 45.000 cycles  
light fastness: class 4-5



**O40**



**O31**



**O30**

# Category 300

## Crepe by Torri Lana

collection: Fabric  
composition: 50% cotton, 33% viscose,  
17% linen  
width: 140 +/- 3 %  
piling: 3-4  
abrasion resistance: 35.000 cycles  
light fastness: class 4-5



**034**



**039**



**103**

# Category 300

## Duffy by Mercis

collection: Fabric  
composition: 81% Polyester, 19% Cotton  
width: 140 cm +/-2%  
piling: 4  
abrasion resistance: 100.000 cycles  
light fastness: class 6



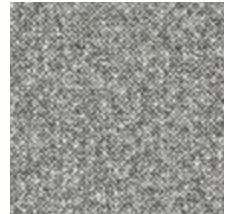
**009**



**007**



**041**



**018**



**023**

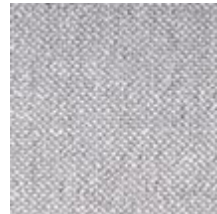
## Category 300

### **Gordon** by Mario Sirtori

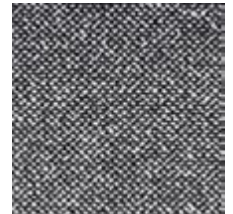
collection: Fabric  
composition: 31% viscose, 28% cotton, 20% wool,  
10% polyamide 6% polyester 5% other  
width: 140 cm +/- 2 cm  
piling: 3-4  
abrasion resistance: 30.000 cycles  
light fastness: class 5  
rubbing fastness: 4-5 wet and dry



**03/1**



**90/1**



**98/2**

# Category 300

## Haku by Kvadrat

collection: Fabric  
composition: 100% polyurethane, 100% polyester  
on the backside  
width: approx 140 cm  
piling: 4  
abrasion resistance: 100.000 cycles  
light fastness: class 7  
rubbing fastness: 4-5 dry and wet  
manufacturer warranty: 10 years



**221**



**321**



**351**



**961**



**941**



**871**



**981**



**241**



**281**



**191**

# Category 300

## Mystic by Mercis

collection: Fabric  
composition: 100% polyester  
width: 140 cm  
piling: 5  
abrasion resistance: 150.000 cycles  
light fastness: class 4-5



**01**



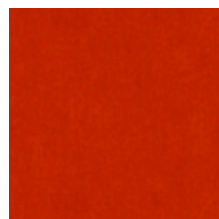
**032**



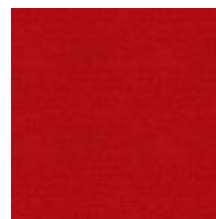
**012**



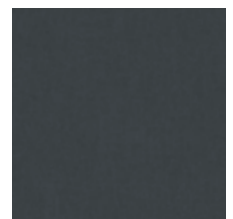
**105**



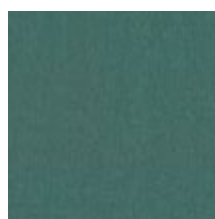
**062**



**056**



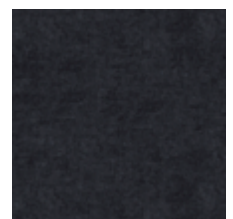
**311**



**395**



**069**



**214**

# Category 300

## Orsetto by Mario Sirtori

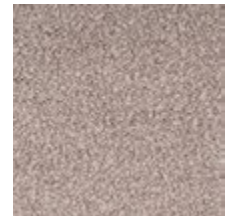
collection: Fabric  
composition: 34% viscose, 33% acrylic,  
17% wool, 8% polyester, 4% flax, 4% cotton  
width: 138-140 cm  
piling: 5  
abrasion resistance: 80.000 cycles  
light fastness: class 5  
rubbing fastness: 5 dry, 3-4 wet



**01/1**



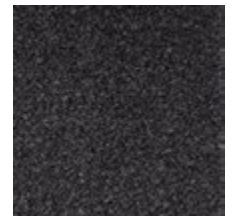
**01/2**



**05/10**



**02/22**



**98/21**

# Category 300

## Tundra by Mario Sirtori

collection: Fabric  
composition: 42% viscose, 36% cotton  
16% acrylic, 6% polyester  
width: approx 140 cm  
piling: 3-4  
abrasion resistance: 30.000 cycles  
light fastness: class 5  
rubbing fastness: 4-5 wet and dry



**003**



**004**



**008**



**010**



**011**



**012**



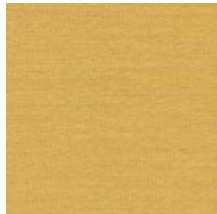
# Category 400

## Arco by Rohi

collection: Fabric  
composition: 95% WV 5% PA  
width: 140 cm  
piling: 4-5  
abrasion resistance: 70.000 cycles  
light fastness: class 5  
rubbing fastness: 4-5 dry and wet



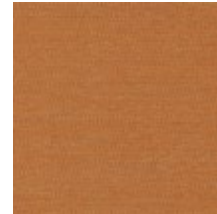
**arctic**



**corn**



**jade**



**safran**



**vivid**



**breeze**



**samba**



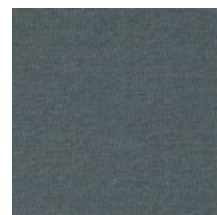
**azur**



**mare**



**aqua**



**pond**



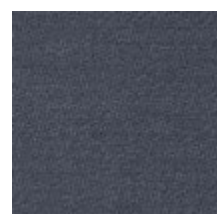
**forest**



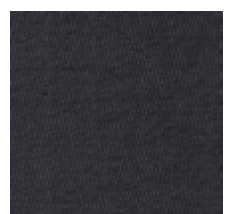
**fels**



**kies**



**carbon**

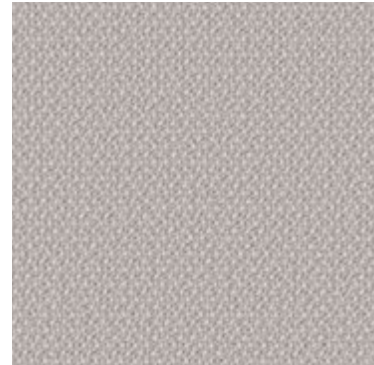


**lanoso**

# Category 400

## Credo by Rohi

collection: Fabric  
composition: 95% wV, 5% PA  
width: 140 cm  
piling: 4-5  
abrasion resistance: 100.000 cycles  
light fastness: class 5



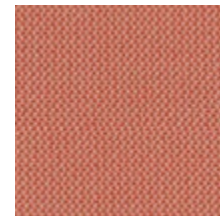
**calla**



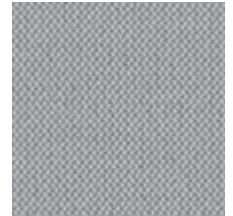
**macadamia**



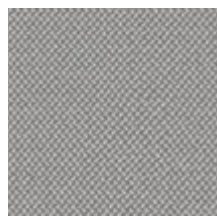
**aureo**



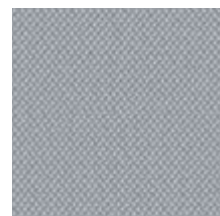
**grapefruit**



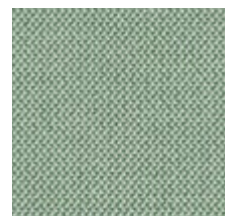
**chalk**



**zinn**



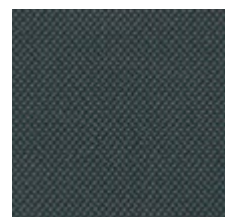
**diamond**



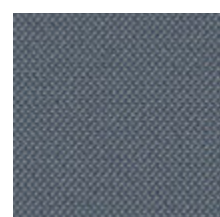
**aloe**



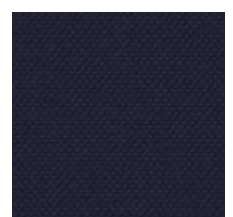
**lake**



**jaspis**



**sea**

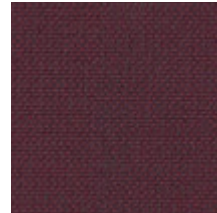


**navy**

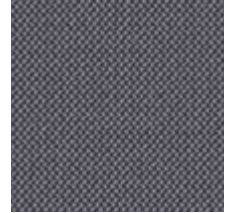
# Category 400

## Credo

by Rohi



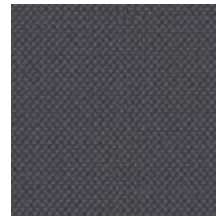
rubin



carbon



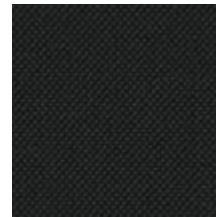
fango



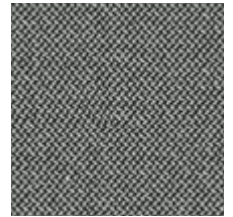
schiefer



asphalt



black



pepper

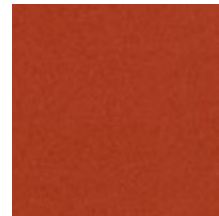
# Category 400

## Divina 3 by Kvadrat

collection: Fabric  
composition: 100% new wool  
width: 150 cm  
piling: 3  
abrasion resistance: 45.000 cycles  
light fastness: class 5-6  
rubbing fastness: 4-5 dry, 3-5 wet  
manufacturer warranty: 10 years



224



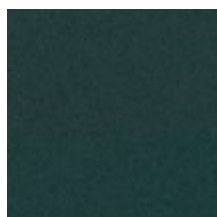
552



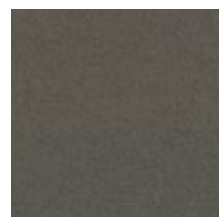
584



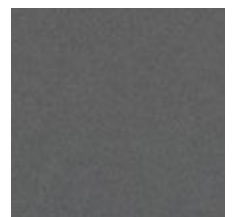
893



886



944



173



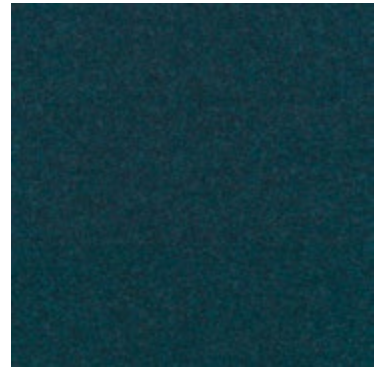
191

## Category 400

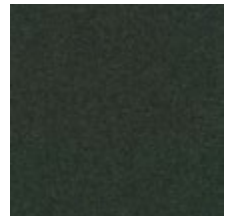
---

### **Divina MD** by Kvadrat

collection: Fabric  
composition: 100% new wool  
width: 150 cm  
piling: 3  
abrasion resistance: 45.000 cycles  
light fastness: class 5-6  
rubbing fastness: 4-5 dry, 3-5 wet  
manufacturer warranty: 10 years



**873**



**973**

# Category 400

## Divina Melange 3

by Kvadrat

collection: Fabric  
composition: 100% new wool  
width: 150 cm  
piling: 3  
abrasion resistance: 45.000 cycles  
light fastness: class 6-7  
rubbing fastness: 4-5 dry, 3-5 wet  
manufacturer warranty: 10 years



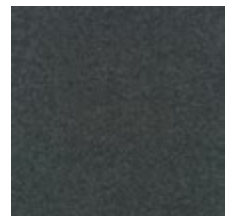
227



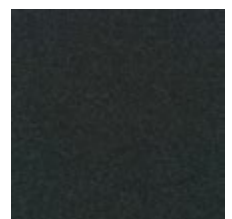
581



147



170



180

# Category 400

## Novum by Rohi

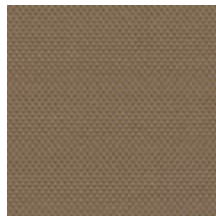
collection: Fabric  
composition: 96% virgin wool, 4 % polyamide  
width: 150 cm +/- 2 cm  
piling: 4-5  
abrasion resistance: 90.000 cycles  
light fastness: class 5-8  
rubbing fastness: 4-5 dry and wet



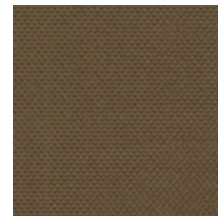
**angora**



**cocos**



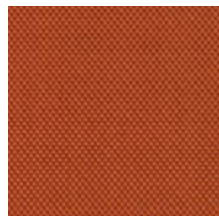
**paradise**



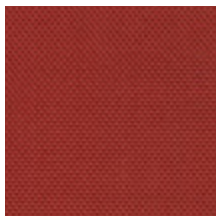
**cacao**



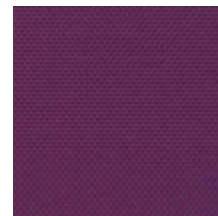
**curry**



**coral**



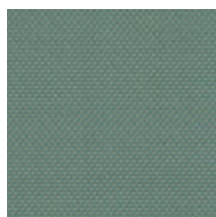
**heart**



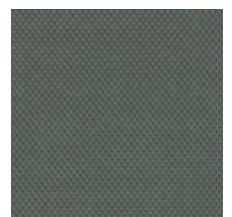
**viola**



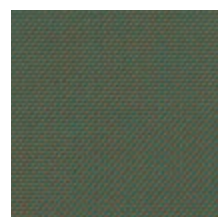
**prune**



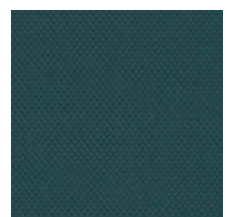
**lagoon**



**delphi**



**mambo**



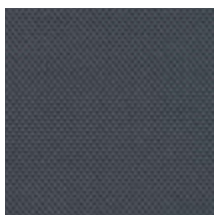
**samoa**

# Category 400

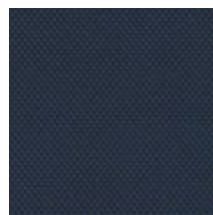
---

## Novum

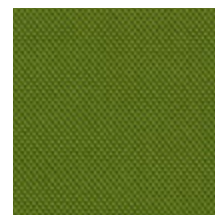
by Rohi



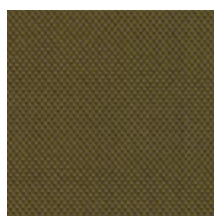
**blues**



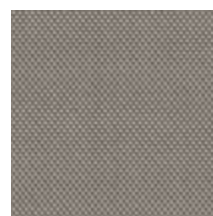
**amur**



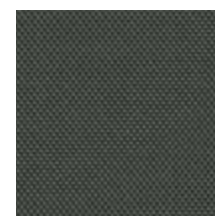
**moss**



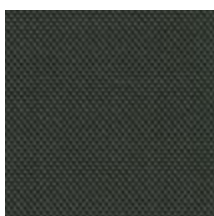
**pinie**



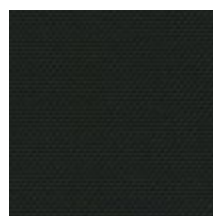
**kies**



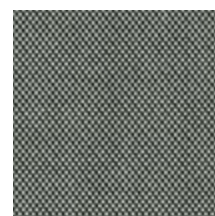
**carbon**



**lanoso**



**ebony**



**pepper**



# Category 400

## Planum by Kvadrat

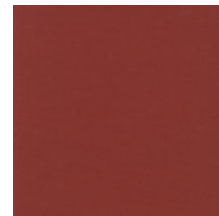
collection: Fabric  
composition: 44% new wool, 42% polyester,  
14% nylon  
width: 160 cm  
piling: 4  
abrasion resistance: 100.000 cycles  
light fastness: class 5-6  
rubbing fastness: 4-5 dry and wet  
manufacturer warranty: 5 years



**521**



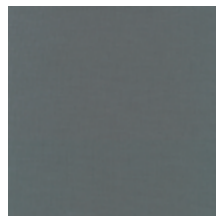
**351**



**571**



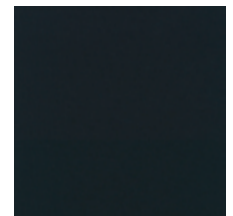
**741**



**141**



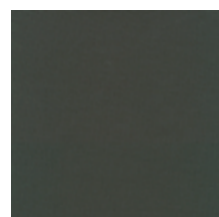
**921**



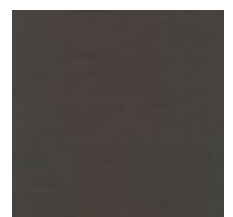
**791**



**941**



**971**



**271**

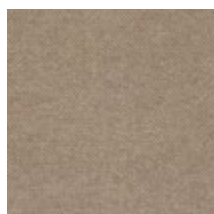
# Category 500

## Hallingdal 65 by Kvadrat

collection: Fabric  
composition: 70% new wool, 30% viscose  
width: 130 cm  
piling: 3-4  
abrasion resistance: 100.000 cycles  
light fastness: class 7  
rubbing fastness: 4-5 dry, 3-5 wet  
manufacturer warranty: 10 years



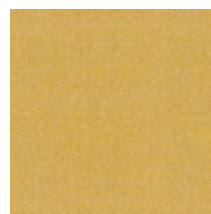
**200**



**220**



**350**



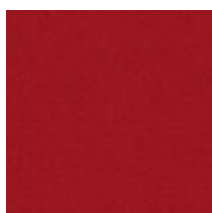
**407**



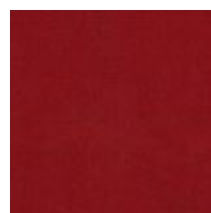
**457**



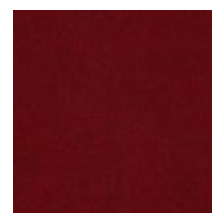
**590**



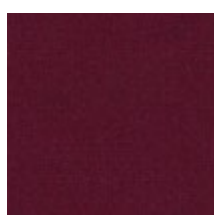
**674**



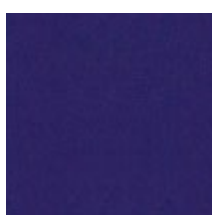
**657**



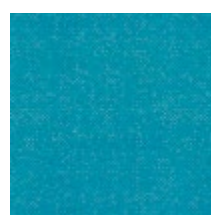
**687**



**573**



**763**



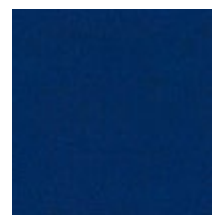
**840**



**850**



**810**



**754**

# Category 500

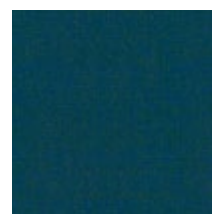
## Hallingdal 65 by Kvadrat



733



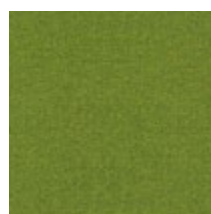
764



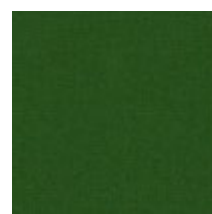
890



944



980



960



110



116



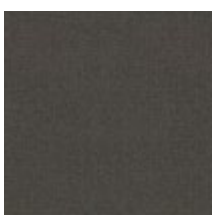
130



166



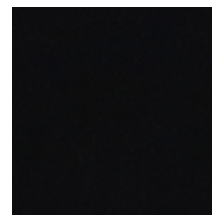
123



153



173

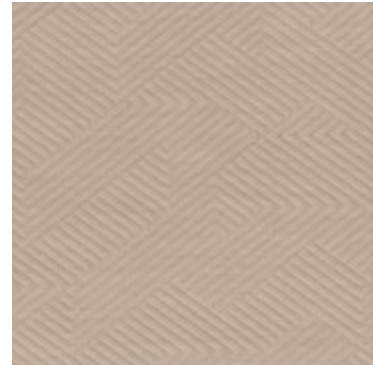


190

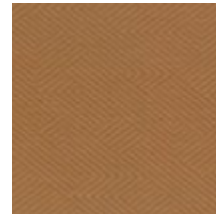
# Category 500

## Mizmaze by Kvadrat

collection: Fabric  
composition: 60% polyester, 30% wool,  
10% nylon  
width: 163 cm  
piling: 4  
abrasion resistance: 100.000 cycles  
light fastness: class 6  
rubbing fastness: 4 dry, 4-5 wet  
manufacturer warranty: 10 years



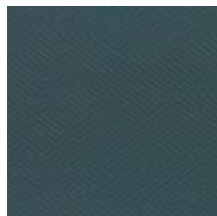
**212**



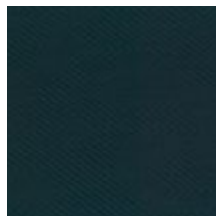
**322**



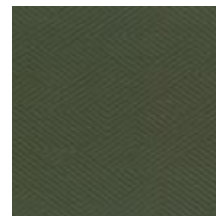
**562**



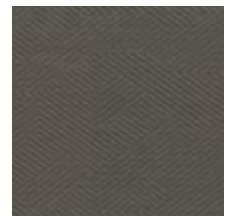
**762**



**882**



**962**



**252**



**392**

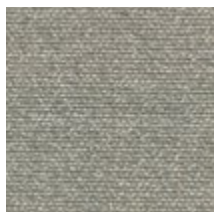
# Category 500

## Moss by Kvadrat

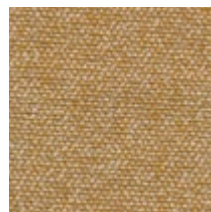
collection: Fabric  
composition: 52% cotton, 22% viscose  
14% polyacrylic, 6% linen, 3% polyester, 3% nylon  
width: 138 cm  
piling: 4-5  
abrasion resistance: 50.000 cycles  
light fastness: class 5-7  
rubbing fastness: 4-5 dry and wet  
manufacturer warranty: 2 years



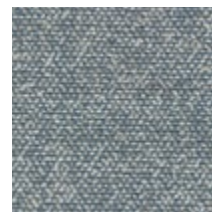
**011**



**005**



**021**



**010**



**003**



**006**



**015**



**002**

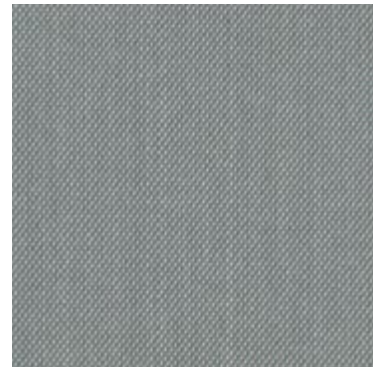


**001**

# Category 500

## Steelcut Trio 3 by Kvadrat

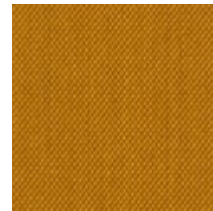
collection: Fabric  
composition: 90% new wool worsted, 10% nylon  
width: approx 140 cm  
piling: 4  
abrasion resistance: 100.000 cycles  
light fastness: class 6-7  
rubbing fastness: 4-5 dry and 3-5 wet  
manufacturer warranty: 10 years



113



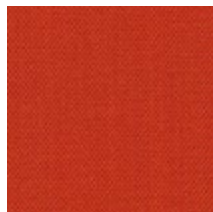
205



453



576



533



636



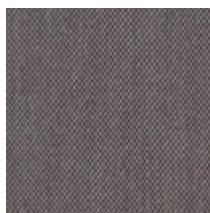
686



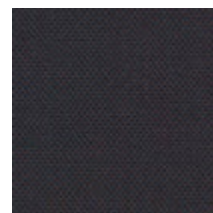
645



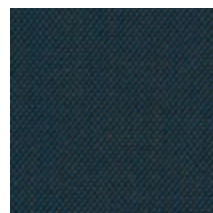
806



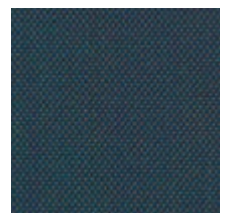
336



776



756



883

# Category 500

## Steelcut Trio 3 by Kvadrat



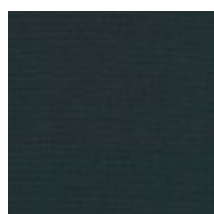
983



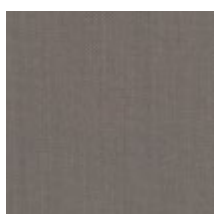
946



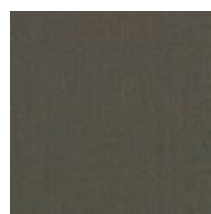
966



996



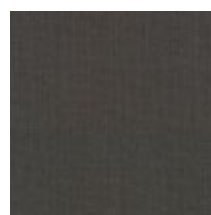
246



266



153



176

# Category 600

## Uniform Melange

by Kvadrat

collection: Fabric  
composition: 68% new wool, 22% nylon,  
10% polyester  
width: 165 cm  
piling: 4  
abrasion resistance: 80.000 cycles  
light fastness: class 6  
rubbing fastness: 4-5 dry and wet  
manufacturer warranty: 5 years



553



363



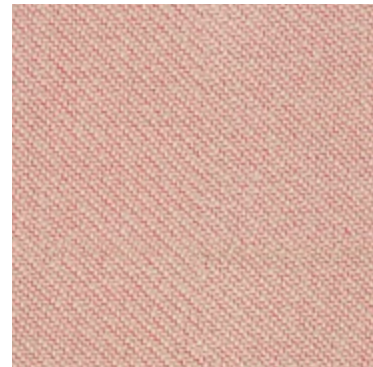
933



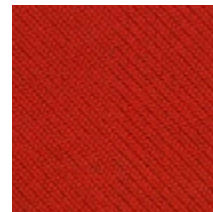
# Category 700

## Coda 2 by Kvadrat

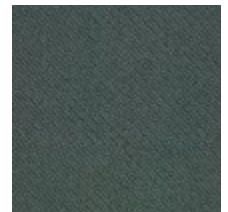
collection: Fabric  
composition: 90% wool, 10% nylon  
width: 140 cm  
piling: 4  
abrasion resistance: 100.000 cycles  
light fastness: class 6  
rubbing fastness: 4-5 dry and 4 wet  
manufacturer warranty: 10 years



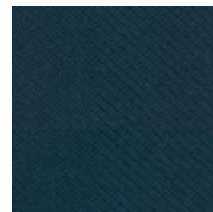
**116**



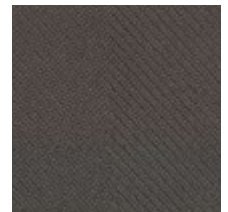
**610**



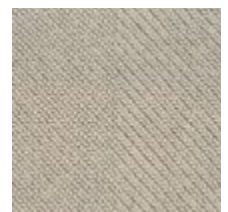
**962**



**762**



**182**

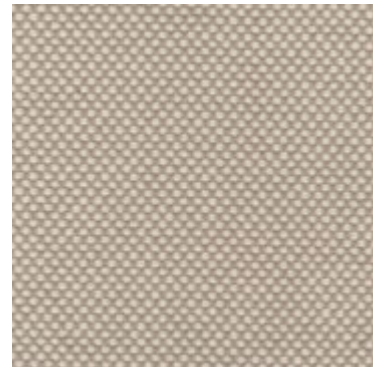


**100**

# Category 700

## Sisu by Kvadrat

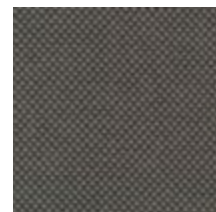
collection: Fabric  
composition: 91% new Norwegian wool,  
8% new New Zealand wool, 1% nylon  
width: approx 142 cm  
piling: 3-4  
abrasion resistance: 70.000 cycles  
light fastness: class 7  
rubbing fastness: 4-5 dry and wet  
manufacturer warranty: 10 years



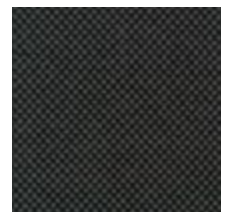
105



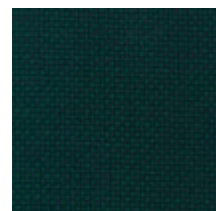
125



175



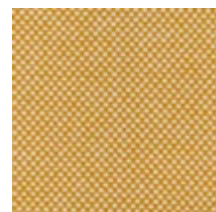
195



885



805



405



165

# Leather collection



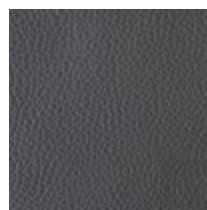
# Category 80

## Cervo by Stolz

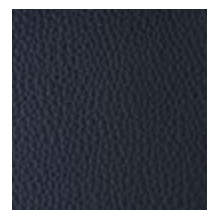
collection: Leather  
origin: scandinavian bullhides  
thickness: 1.5 - 1.7 mm  
light fastness: 4  
surface: aniline – slightly pigmented



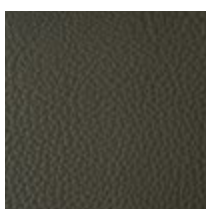
354



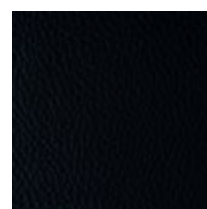
358



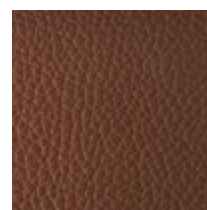
360



359



150

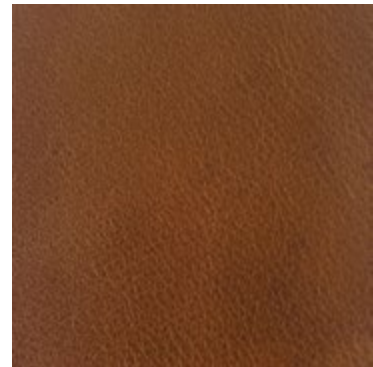


357

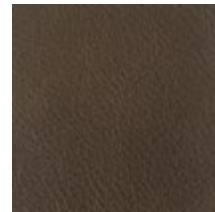
# Category 80

## Divina by Stolz

collection: Leather  
origin: scandinavian bullhides  
thickness: 1.2 - 1.4 mm  
surface: pigmented nappa with fine grain structure



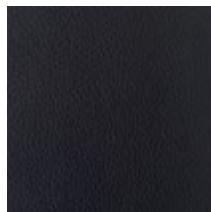
**cognac**



**pietra**



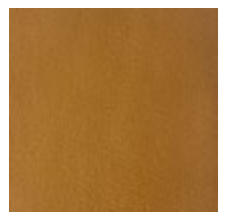
**deserto**



**antracite**



**muschio**



**caramello**

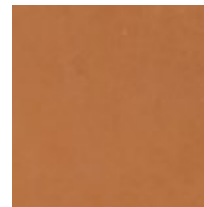
# Category 80

## Elmosaddle by Elmo

collection: Leather  
origin: grain leather from Scandinavian cattle  
thickness: 1.0 - 1.2 mm  
light fastness: 3  
rubbing fastness: wet 80/4, dry 2000/4  
surface: aniline, full grain



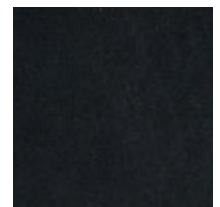
**12129**



**43131**



**48017**



**99115**

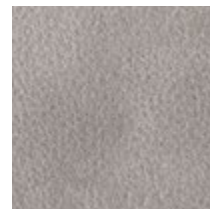
# Category 80

## Tundra by Stolz

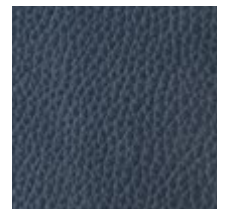
collection: Leather  
origin: south german bullhides  
thickness: 2.0 - 2.2 mm  
light fastness: 3  
rubbing fastness: dry and wet 3  
surface: aniline



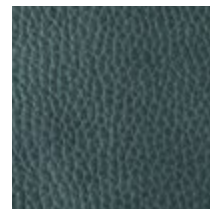
**600 choco**



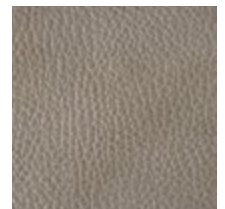
**603 taupe**



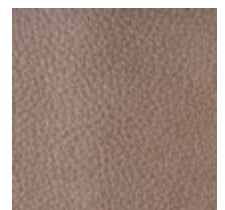
**604 basalt**



**606 dark olive**



**602 sahara**



**601 cognac**





# Outdoor collection

# Category 300

## Acero by Mariaflora

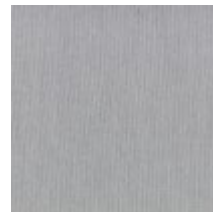
collection: Outdoor  
composition: 100% solution dyed acrylic  
width: 140 cm  
abrasion resistance: 40.000 cycles  
light fastness: class 7-8  
rubbing fastness: 5 dry and wet



**9287**



**15102**

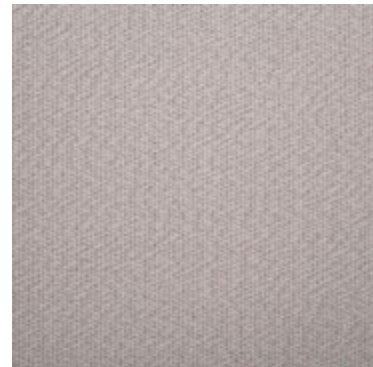


**793079**

# Category 300

## Apache by Mariaflora

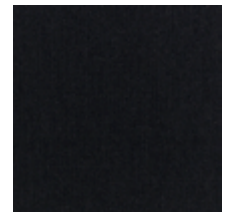
collection: Outdoor  
composition: 100% solution dyed acrylic  
width: 140 cm  
abrasion resistance: 45,000 cycles  
light fastness: class 7-8  
rubbing fastness: 5 dry and wet



**002**



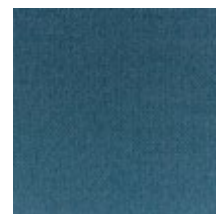
**004**



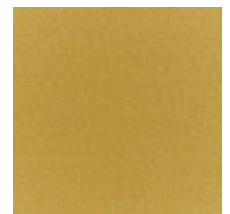
**008**



**010**



**011**



**015**

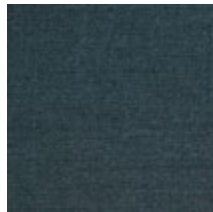
# Category 300

## Erfoud by Mariaflora

collection: Outdoor  
composition: 100% solution dyed acrylic  
width: 140 cm  
abrasion resistance: 50.000 cycles  
light fastness: class 7-8  
rubbing fastness: 5 dry and wet



79



81



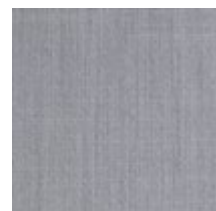
82



130



150



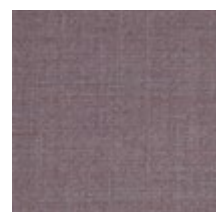
2010



7587



8715



16020



92693

# Category 300

## Patio by Kvadrat

collection: Outdoor  
composition: 100% Trevira CS  
width: Approx. 140 cm  
piling: 4-5 (ISO 1-5)  
abrasion resistance: 50.000 cycles  
light fastness: class 7  
rubbing fastness: 4-5 dry and wet  
manufacturer guarantee: 10 years  
sustainability: Greenguard Gold, HPD, EPD



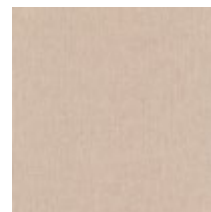
**0170**



**0220**



**0340**



**0430**



**0780**

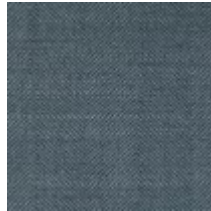
# Category 400

## Tan tan by Mariaflora

collection: Outdoor  
composition: 100% solution dyed acrylic  
width: 140 cm  
abrasion resistance: 50.000 cycles  
light fastness: class 7-8  
rubbing fastness: 5 dry and wet



**7587**



**8182**



**9479**



**13093**



**92693**

# Category 400

## Zagora by Mariaflora

collection: Outdoor  
composition: 100% solution dyed acrylic  
width: 140 cm  
abrasion resistance: 50.000 cycles  
light fastness: class 7-8  
rubbing fastness: 5 dry and wet



**2010**



**8271**



**8281**



**20160**



**92693**



**170150**

# Category 600

## Rococò by Dedar

collection: Outdoor  
composition: 97% PP, 3% PES  
width: 137 cm  
abrasion resistance: 40.000 cycles



**navy**



**rouge  
mariniere**



**sale pepe**



# Category 700

---

## **Libera** by Dedar

collection: Outdoor  
composition: 100% PP  
width: 134 cm  
abrasion resistance: 40.000 cycles



**Rice 001**

# Contacts

---

## **Prostoria Ltd.**

Pustodol Zacreški 19G  
49 223 Sv. Kriz Zacrešje  
Croatia  
T: +385 49 200 555  
M: [wholesale@prostoria.eu](mailto:wholesale@prostoria.eu)  
M: [export@prostoria.eu](mailto:export@prostoria.eu)  
[www.prostoria.eu](http://www.prostoria.eu)

Please contact us for any information:  
Monday-Friday: 08-16 h

COPYRIGHT 2022

The Materials Book is valid from is valid from 01. 06. 2022, until the new edition is published.

Prostoria Ltd. is not responsible for errors made in the print. The photos are informative. Possible texture and colour variations are caused by the printing process.