

Cité

Jean Prouvé, 1930

vitra.



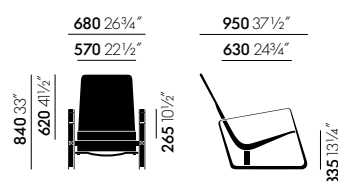
Designed for a competition to furnish the student residence halls at the Cité Universitaire in Nancy, the Cité armchair is one of Jean Prouvé's early masterpieces. Prouvé himself used this dynamic looking armchair – with distinctive runners made of powder-coated sheet steel and

broad leather belts for armrests – in the living room of his own home. Generous dimensions and inviting upholstery contribute to the great comfort of Cité.

Materials

- **Cover:** seat and backrest with a continuous cover in fabric or leather.
- **Upholstery:** neck cushion in polyurethane foam, height-adjustable.
- **Seat height:** 335 mm (210 mm with applied load, measured in accordance with EN 1335-1).
- **Base:** bent sheet steel, powder-coated finish (smooth).
- **Glides:** fitted with plastic glides for carpet; felt glides for hard floors optionally available.
- **Note:** the steel frame in Métal Brut has a raw irregular surface protected by a transparent powder coating.

DIMENSIONS (in accordance with EN 1335-1:2000)



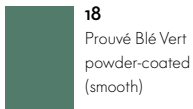
Cité

COLOURS AND MATERIALS

vitra.



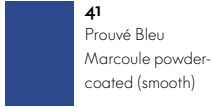
88
Prouvé Blanc
Colombe (Ecrú)
powder-coated
(smooth)



18
Prouvé Blé Vert
powder-coated
(smooth)



06
Japanese red
powder-coated
(smooth)



41
Prouvé Bleu
Marcoule powder-
coated (smooth)



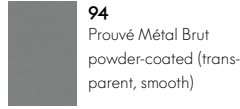
13
Prouvé Gris
Vermeer powder-
coated (smooth)



12
deep black
powder-coated
(smooth)



14
Prouvé Bleu
Dynastie powder-
coated (smooth)



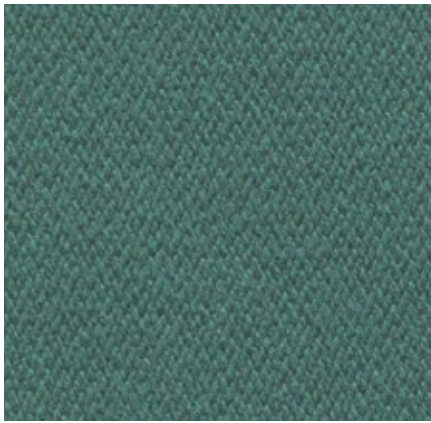
94
Prouvé Métal Brut
powder-coated (trans-
parent, smooth)

Base frame
Colour group 1

Base frame
Colour group 2

Mello Home, F40

vitra.



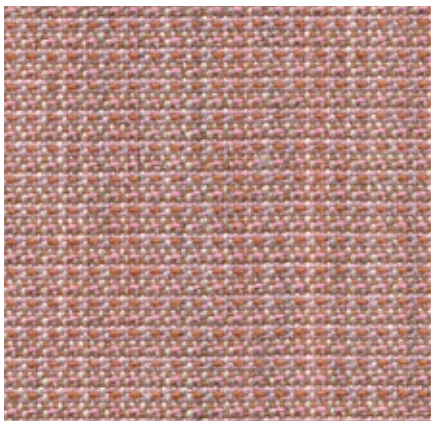
Mello is an elegant cotton fabric with a pleasant softness and cool tactile qualities. Thanks to a thicker melange yarn of recycled cotton, the robust twill weave has a lively yet balanced appearance. The understated colour palette for Mello ranges from pastel tones to natural, earthy shades and darker hues.

Mello is available in 8 colours.

Material	80% cotton, 20% polyester
Weight	530 g/m ² (15.6 oz/y ²)
Width	142 cm +/- 2 cm (56")
Abrasion resistance	30,000 Martindale
Fastness to light	Type 5
Pilling	Grade 4
Fastness to rubbing	Grade 3-4 dry and wet



Tress Home/Office, F80



Tress is a flat woven fabric with a lively appearance that derives from the contrast between its even structure and the natural melange of colours. The combination of yarns with varied hues creates a harmonious and yet vibrant look. Thanks to its high wool content, Tress is a durable, easy-care material with a home-like aesthetic.

Tress is available in 22 colours.

Material	8% polyamide, 73% new wool, 19% polyester
Weight	310 g/m ² (9.1 oz/y ²)
Width	142 cm +/- 2 cm (56")
Abrasion resistance	40,000 Martindale
Fastness to light	Type 6
Pilling	Grade 4-5
Fastness to rubbing	Grade 4-5 dry and wet



Leather Premium F Home/Office, L50

vitra.



The properties of Leather Premium F are equivalent to those of Leather Premium. However, Leather Premium F is processed with a tanning agent extracted from olive tree leaves (a waste product of the olive harvest), and the entire production process is carried out with the least hazardous chemicals in the smallest possible amounts.

This pleasantly soft, sustainably produced semi-aniline leather is available in a selection of 22 colours.

Material

Semi-aniline nappa leather with a very soft and supple feel, vegetable tanned

Fastness to light

Type 5

Thickness

1.1–1.3 mm

Fastness to rubbing

Grade 4 dry and wet

