



PlateWriter Infuse

GLUNZ & JENSEN 



work positive

AFFORDABLE. EASY TO USE. GREEN CHOICE.

Space-saving & affordable • The PlateWriter™ Infuse is an affordable, metal Computer-to-Plate system which produces press-ready aluminium plates for small to mid-size commercial print applications, with daylight operation and without the use of chemical processing. This small foot-print CtP solution is completely self-contained and its chemical-free approach means no additional equipment (such as chemical processors or washout units) are required.

Digital & semi-automated • High quality digital CtP plates with accurate registration are guaranteed with the PlateWriter™ Infuse. Its semi-automated plate registration system provides a versatile plate handling approach, so multiple plate sizes and gauges can be used interchangeably. This makes the Glunz & Jensen PlateWriter™ Infuse suitable for both commercial printers and smaller newspaper printers with one or more printing presses.

Inkjet technology delivers plates without chemistry • A water-based Liquid Dot™ image is applied to non-photosensitive aluminium printing plates. The imaged plates are manually fed through an integrated finishing unit which dries the plates and bonds the Liquid Dot™ to the plate surface, making CtP plates capable of printing more than 50,000 impressions.

The sustainable choice • PlateWriter™ Infuse has the lowest energy usage in its class and it eliminates water usage, chemicals and disposal costs. In fact, you can now refurbish your old PlateWriter to a new PlateWriter™ Infuse with an Infuse-kit – renew your PlateWriter and reduce waste!



PlateWriter™ Infuse

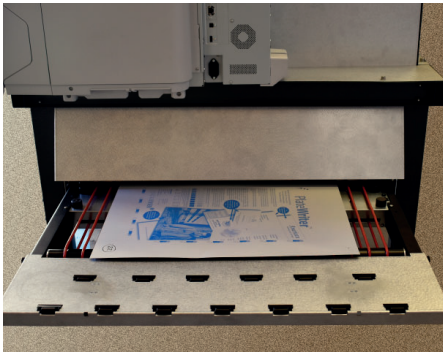
A fusion of proven function, features and flexibility from earlier PlateWriter™ models, reimagined with modular functionality. Suitable for commercial printers, small and medium newspapers, and some book printing. Compatible with 2-up and 4-up press formats up to 915 x 1140 mm.



Infuse-kit

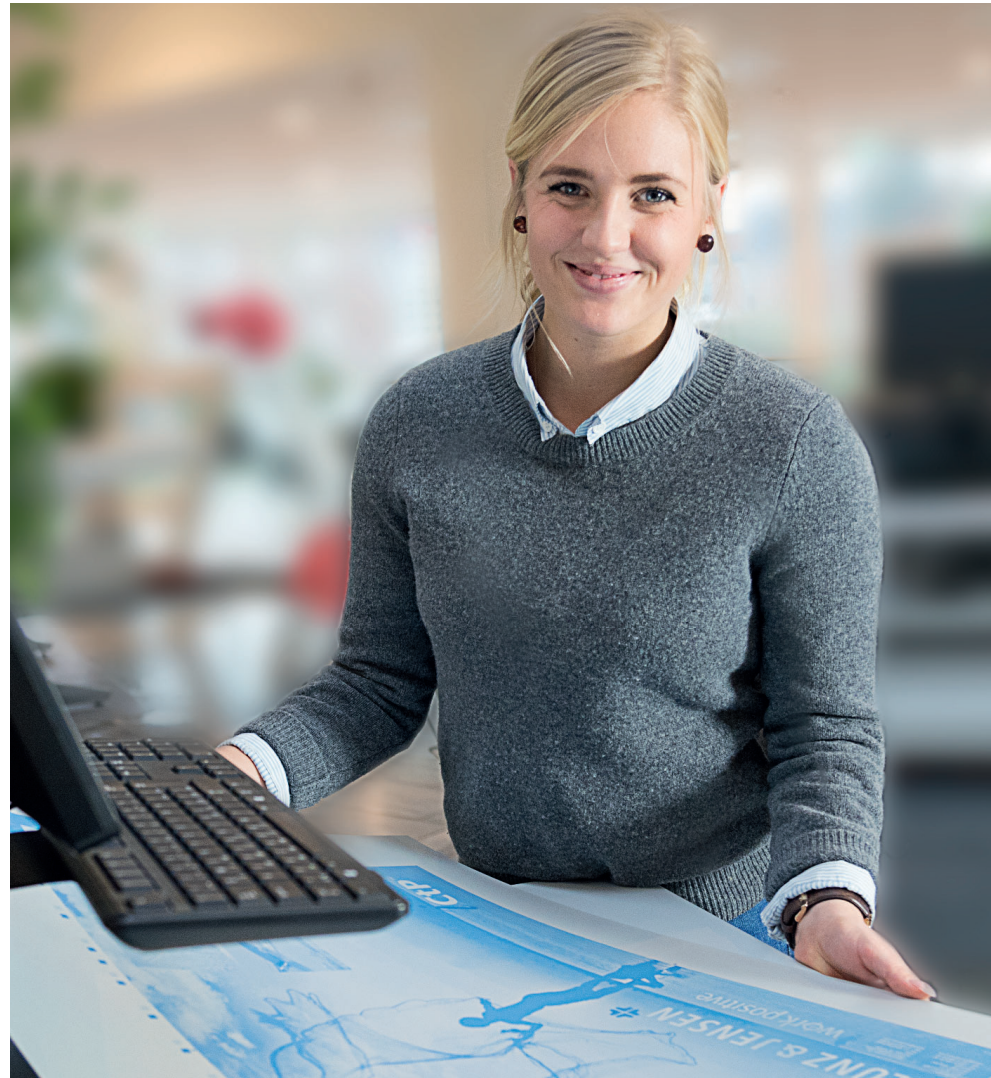
Infuse your current iCtP™ machine with new life! Upgrade any previous PlateWriter™ or NewsWriter™ model to a PlateWriter Infuse in one day – renew your prepress and reduce waste. Simply move your current computer and finishing unit to the ready-built Infuse-kit and you are ready to go!





▲ The imaged plates are manually fed through the integrated finishing unit which dries the plates and bonds the liquid dots to the plate surface.

▼ Simple, clean operation with no mess and no fuss. Advanced inkjet technology means you only handle cartridges.



▲ Inkjet technology is used to apply a Liquid Dot™ image to non-photosensitive, conventionally grained aluminium plates.

▼ Semi-automated plate loading mechanism uses optical sensors to deliver digitally accurate plates.



Plates have no light sensitive coating meaning they can be handled and imaged in normal daylight.



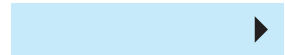
▲ The PlateWriter™ delivers standard metal plates for your press which requires no pressroom changes.

▼ Supplied with an industry standard Harlequin-based Xitron RIP on a powerful PC platform ready to accept jobs from Mac or PC.

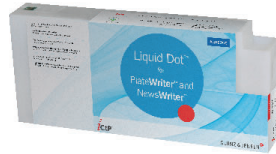


iCtP™ CONSUMABLES

iCtP™ consumables are designed to work together to create the sharpest and most resiliant image possible when using inkjet technology to make offset printing plates.



Liquid Dot is a patented, specially fomulated liquid oleophilic coating, which is applied directly onto the iPlate, creating a high definition image.



iPlates™ are specially designed, conventionally grained aluminum plates with no thermal or light sensitive coatings. They are available in both standard and custom size and in gauges from 0.15-0.30 mm.

i-Finisher protects the background of your plates. It is designed for use with the iCtP™ automated finishing unit after imaging and can also be applied manually for protection of plates during storage.



iPlate Cleaner is a mild and fast acting cleaner which powers through dried ink and gum without damage to the image. It leaves a water receptive film on the non-image area, ensuring fast start-up.



Deletion pens allow you to make small corrections and remove minor flaws on your imaged plates, without having to re-image a new plate, saving you time and ressources.



Learn more about iCtP™ by scanning this QR code

Stay updated!
Follow
Glunz & Jensen



GLUNZ & JENSEN

		PlateWriter™ Infuse
MODEL		Professional quality – Low price point
IMAGING		
Market position		Small to medium commercial printers; 2-up and 4-up
Imaging technology		10 x 360 Ultra high definition imaging array (3600 dual density nozzles delivering up to 2880dpi)
Imaging resolution		1440 x 1440dpi or 2880 x 2880dpi
Screening		AM
Imaging fluid		Water-based Liquid Dot™ technology
Plate thickness		0.15-0.3 mm (0.006-0.012")
Plate types		Standard aluminium iPlates
Plate width		210-914mm (8.3-36")
Plate length		311-1140mm (9.5-44.9")
Max imaging size (W x L)		909 x 1123mm (35.8 x 44.2")
Plate registration		Professional pin bar register with optical plate loading or manual loading lever, depending on options
Imaging speed (by plate size)	400 x 511mm / 15.7 x 20.1"	2.53-5.46min/plate (Quality dependent)
	550 x 650mm / 21.7 x 25.6"	5.10-10.20min/plate (Quality dependent)
	605 x 745mm / 23.8 x 29.3"	6.05-12.10min/plate (Quality dependent)
GREEN CREDENTIALS		
Water consumption		None required
Power consumption (stand-by)		0.06kW (200BTU/hour)
Power consumption (average)		1.1kW (3,870BTU/hour) based on 500 plates/month
GENERAL		
Dimensions (LxWxH)		3131 x 960 x 1498mm (123.3 x 37.8 x 59")
Weight		310kg (683lbs)

Part no. 10105070A_10/20

Note: Specifications are subject to changes without prior notice.

Glunz & Jensen (Headquarters)
Lindholm Havnevej 29
5800 Nyborg, Denmark
+45 5768 8181
gj@glunz-jensen.com

Glunz & Jensen (Americas)
2185 Hwy. 292
Inman, SC 29349, USA
+1 864 568 4638
gj-americas@glunz-jensen.com

www.glunz-jensen.com