

S80 series

Ø80mm LED Steady/ Flashing Signal Lights



S80AL LED Steady/ Flashing Signal Light

- Equipped wall mount allows for easy assembly. Additional mounting brackets not required
- Maintenance reduced with longlasting LED light source
- Buzzer not allowed
- Terminal block designed inside the side mount bracket enables easy wiring
- Built-in buzzer available (Volume : Max 90dB at 1m)
- Flashing rate : 60-80 flashes/min
- Materials : Lens-AS, Housing-ABS, Reflector-Heat resistant ABS
- Ambient operating temperature : -30°C to +50°C
- Protection rating : IP44
- Compliant with RoHS directive



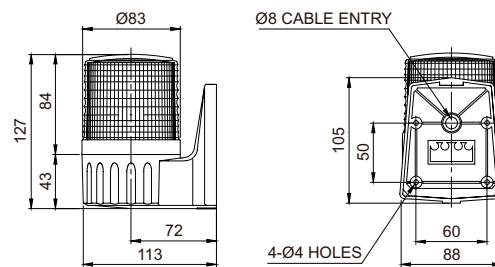
Specifications

Model number	Voltage	Current	Certificates	Weight	Color
S80AL	DC12V	0.123A	-	0.26kg	● R-Red
	DC24V	0.094A		0.26kg	● A-Amber
	AC110V	0.035A		0.35kg	● G-Green
	AC220V	0.017A		0.35kg	● B-Blue

Technical Diagram

(Units : mm)

S80AL



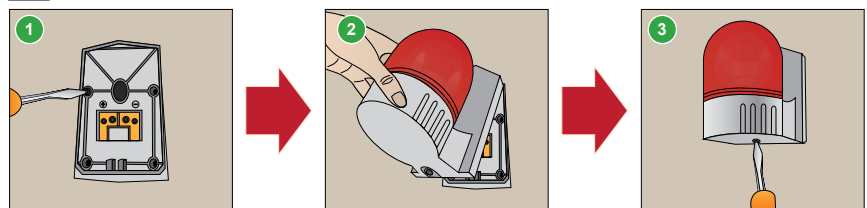
S80AL



Wiring Instructions

- Attach the power supply wire to the terminal block
- Product can be wired regardless of polarity

Mounting Instructions



- 1 Secure the base plate to the mounting surface, and the power line to the terminal block
- 2 Mount the warning light by inserting the ring(hook) into the upper part of the base plate
- 3 Screw in the bolt at the base of the mounting bracket to complete assembly

Ordering Specification

S80AL	-	BZ	-	110	-	R
[Model number]		[Buzzer option]		[Voltage]		[Color]
• S80AL		• None • No buzzer • BZ • Built-in buzzer		• 12-DC12V • 24-DC24V • 110-AC110V • 220-AC220V		• R-Red • A-Amber • G-Green • B-Blue



S80A series enable easy wiring

S80A series enables easy wiring with its terminal block attached to the fixed base plate. With this system the contacts in the housing sends power directly to the terminal block.