

front

USE AND CARE MANUAL

Epic One Manual Opener

 KITCHEN MAMA

IMPORTANT SAFEGUARDS

When using the Epic One Manual Opener, please follow the basic safety precautions:

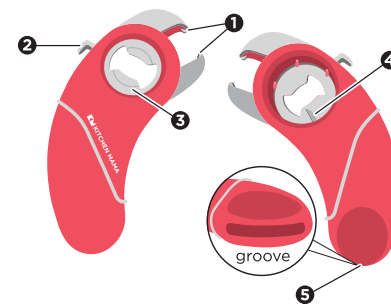
- 1 Read all instructions.
- 2 **Cleaning:** wipe clean only. Do not immerse this product in liquid.
- 3 Keep away from excessive heat and fire.
- 4 Keep out of reach of young children.
- 5 Supervise closely when the product is used by or near children.

SAVE THESE INSTRUCTIONS

Watch a quick instructional video on how to use the Epic One Manual Opener online.

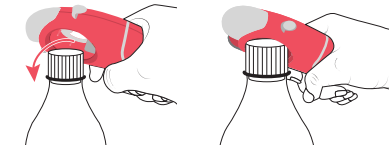


PARTS



- 1 Jar Lid Vacuum Releaser
- 2 Pull Tab Opener
- 3 Classic Bottle Opener
- 4 Screw Cap Bottle Opener
- 5 Pop Tab Opener

INSTRUCTIONS



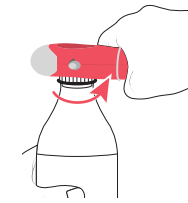
SCREW CAP BOTTLE OPENER

Step 1

Slide sideways into the cap. (24-36mm diameter)

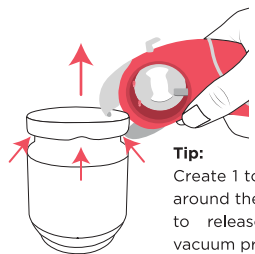
Step 2

Press firmly and twist counter clockwise.



 KITCHEN MAMA

back



Tip: Create 1 to 3 indentations around the edge of the lid to release the internal vacuum pressure.

JAR LID VACUUM RELEASER

Step 1

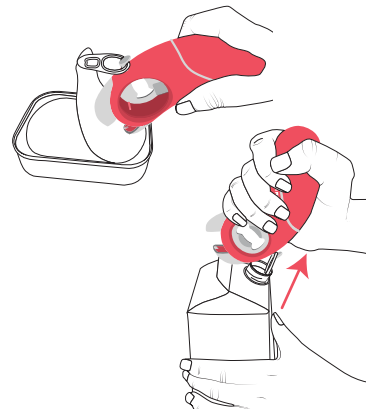
Grip the bottom of the lid edge (up to 14 mm high lid).

Step 2

Lift the opener slightly to break the vacuum seal.

Step 3

Twist off the lid by hand.



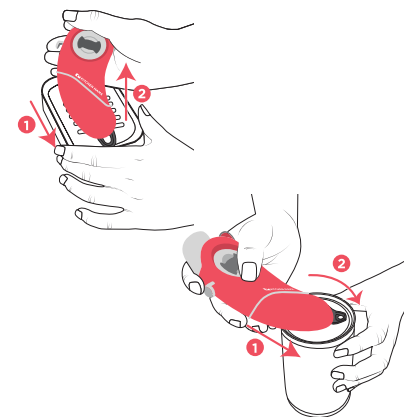
PULL TAB OPENER

Step 1

Hook the ring with the pull tab opener and brace the opener on the top of the item you're opening.

Step 2

Use the rounded back of the opener as leverage and pull the tab back to open.



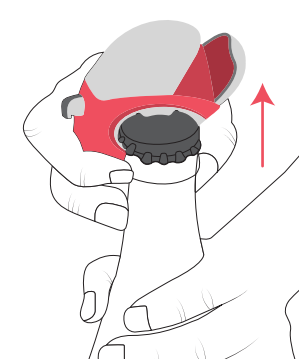
POP TAB OPENER

Step 1

Insert the ring into the groove of the pop tab opener (up to 24mm width pull tab)

Step 2

Tilt the opener up to press down on the tear strip.



CLASSIC BOTTLE OPENER

Step 1

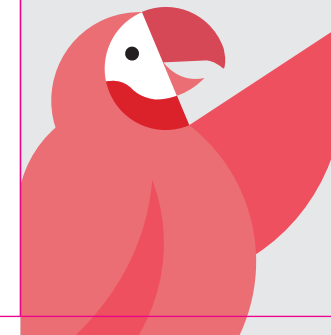
Slip the tab of classic bottle opener under the metal bottle cap.

Step 2

Flip up the opener to pop off the cap.

USER MAINTENANCE

- 1 Store in a dry place. (Storage Tip: The opener can be attached to the refrigerator with the integrated magnet)
- 2 Wipe clean with a damp towel.
- 3 Do not put the opener in the dishwasher or submerge into liquid.



FOLLOW US ON OUR SOCIAL

-  kitchenmamaus
-  kitchenmamaus
-  KitchenMama
-  support@shopkitchenmama.com
-  www.shopkitchenmama.com

