

A fresh feel to enhance your life.

CBU -bubu

Misting System

USER MANUAL

TABLE OF CONTENTS

1. INTRODUCTION	1
2. FUNCTION & SPECIFICATION	2
3. NOZZLE SPEC. & APPLICATION	3
4. ACCESSORIES	4
5. OPERATIONAL INFORMATION & SPEC	5
6. BUBU MISTING SYSTEM FLOW CHART	6
7. HOW QUICK CONNECTORS WORK	7
8. INSTALLATION	
- A. DIVERTER VALVE ASSEMBLY	8
- B. OPTIONAL PREFILTER INSTALLATION	9
- C. UNIT BODY INSTALLATION	10
- D. TIME CONTROL BOX INSTALLATION.....	12
- E. SPRAY NOZZLE INSTALLATION.....	12
9. START-UP	13
10. SPRAY/ INTERVAL TIME SETTING	13
11. SPRAY NOZZLE TECHNICAL INFORMATION	14
12. TROUBLESHOOTING	15

PuricomUSA BUBU misting system is the perfect combination of misting mechanics and excellent product design. In the blistering summer heat, BUBU brings you fresh coolness, giving you all the summer joy you deserve.

As the fine mist droplets vaporize, 1cc of water is able to absorb 539 kJ of energy, thus effectively decreases environmental temperature. BUBU unites misting mechanics and outstanding Puricom components. It is compact, only 1/8 the size of traditional misting systems. It is environmentally friendly, quiet and power saving.

BUBU Misting System also gives the following features:

- Patented booster pump, with innovative cooling system. Steady pump operating temperatures even during continuous use.
- Adjustable misting interval.
- High quality nozzles selected for various usage for maximum cooling effect.



BUBU Misting system is both decorative and practical, refreshing your environment.

■ FUNCTION

1. Temperature cooling

The instant vaporization of fine water particles absorbs huge amount of latent heat and achieves rapid cooling.

2. Environment humidifying

Humidity control helps reduce static electricity and other uncomfortable environmental conditions.

3. Advertising and special effects

Misting system is an effective method for creating desirable atmosphere setting and stage effects.

4. Agriculture and horticulture

Ideal for humidity control and greenhouse use.

5. Keeping fresh

Misting helps keep fruit and vegetables fresh and appealing for a longer period.

6. Odor and dust reduction

The vaporized cool mist absorbs odors, reduces airborne dust.

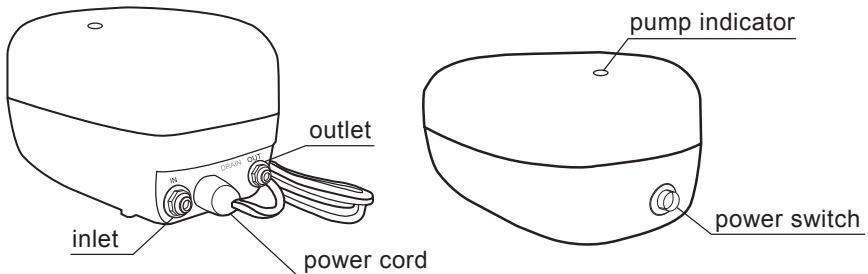
■ SPECIFICATION

Model	CBU	Tube	32 ft.
Power	AC 110V • 220V / 60Hz	Default Setting	Interval - 30 seconds Spray - 30 seconds
Size	LxDxH: 10.83 x 6.5 x 6.1in.	Note	5 sec voltage detection every time switched on.
Nozzle	15 pcs.		

■ NOZZLE SPEC. & APPLICATION

Spec.	No.1 A050400005 0.15mm/0.006"
Application	Interior spaces Restaurants Kindergarten Playground Fruit and Veg. Greenhouse Exhibitions

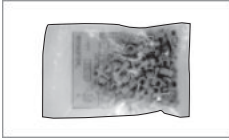
■ PRODUCT DESCRIPTION



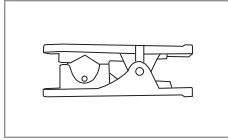
REAR VIEW

FRONT VIEW

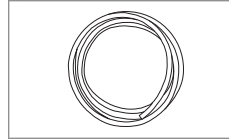
■ ACCESSORIES



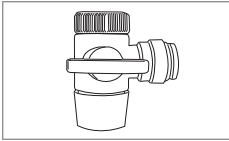
Nail cable clips
(1 packet)



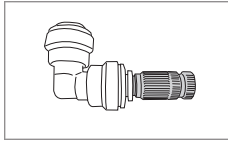
Tube cutter



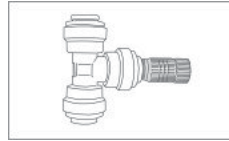
PE tubing - black, 1/4"



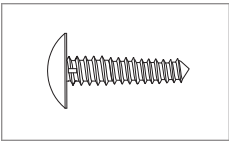
Diverter valve



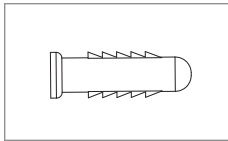
Drain valve



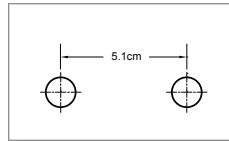
Metal nozzle



Screws for wall
mounting



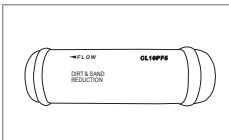
PVC plastic plug
for wall mounting



Wall-mount diagram

(★) Optional accessories - Not included:

- Dust, Sand and Hardness reduction prefilter.



Prefilter (★)

■ OPERATIONAL INFORMATION

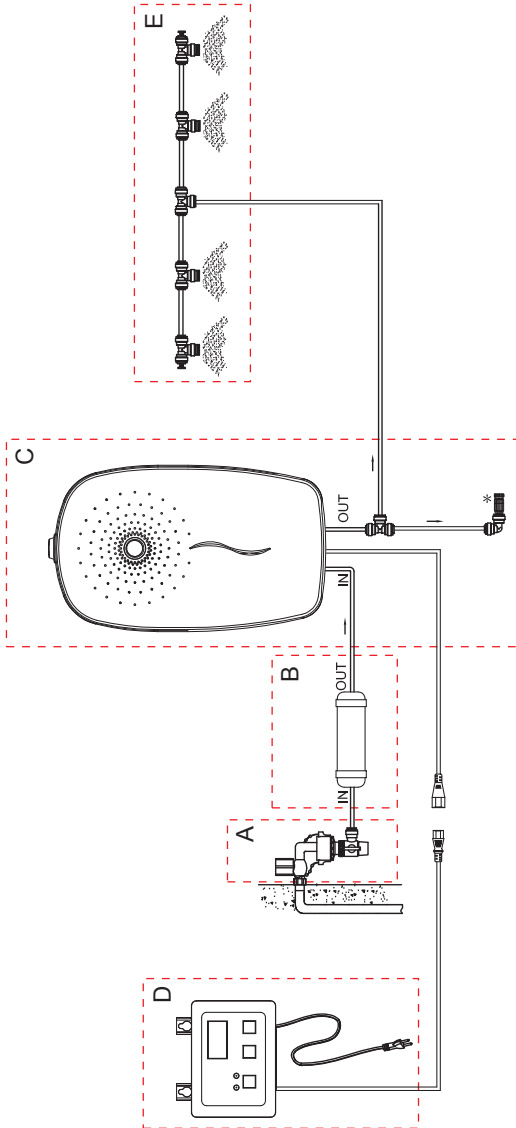
1. Make sure power supply conforms with product specification.
2. Do not place the unit in direct sunlight or damp environments.
3. Do not use hot water (> 40 °C) with the system.
4. Regular maintenance is prerequisite to ensure product reaches expected lifespan.
5. Use an optional prefilter with a problematic water supply such as presence of sand, sediment or hardness.
6. Ensure the inlet and outlet tubing is correctly connected.
7. Install the misting nozzles according to installation guideline for optimal performance.
8. The misting system's pump is under warranty for 1 year.
9. Pretreated or softened water is recommended to prolong nozzle lifespan.
10. Disassembly, remodel or maintenance by non-professional technicians will void warranty.

■ OPERATIONAL SPEC.

Item	Range
Inlet water pressure	25 - 50 psi
Pump working pressure	100 - 150 psi
Optimal water temperature	4 - 40 C [°]

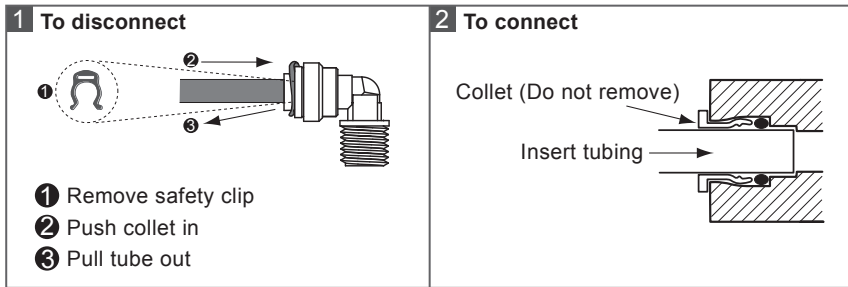
■ BUBU MISTING SYSTEM FLOW CHART

※ Installation Index (Unit A -E)



* The drain valve releases water present in the system and prevents dripping from occurring when the system is shut off. Please place the drain valve at an appropriate drainage point.

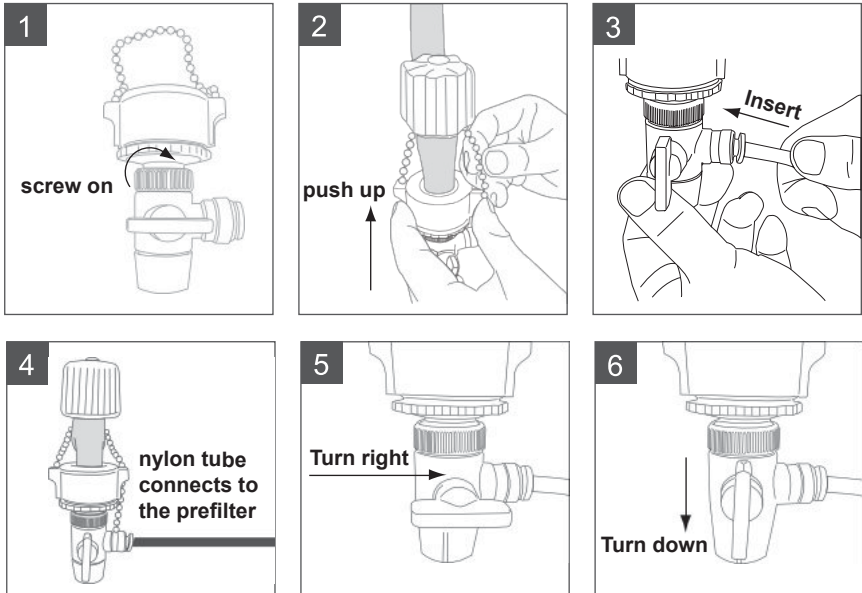
■ HOW QUICK CONNECTORS WORK



1. To remove tubing from the connector: Remove the safety clip from under the collet, push in the collet, and pull the tube out.
2. Installation: Ensure the tube is clean and free of burrs. Push the tube into the connector until it stops. Pull tube out a little bit, and replace the safety clip.

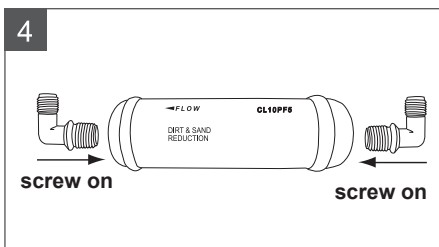
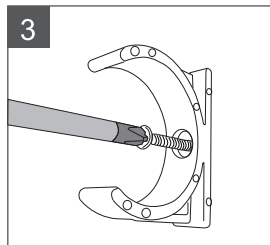
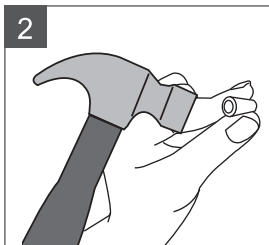
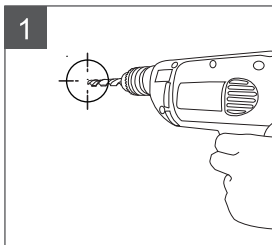
■ **INSTALLATION** (Also refer to p. 6)

A. Diverter Valve Assembly



1. Screw the diverter valve onto the optional universal connector with chain - not included. The diverter valve can be directly connected to faucet.
2. Push up and lock chain.
3. Insert the nylon tube into the diverter valve.
4. The nylon tube connects diverter valve to prefilter.
5. Turn right to diver water to BUBU misting system.
6. Turn down to divert water to faucet.

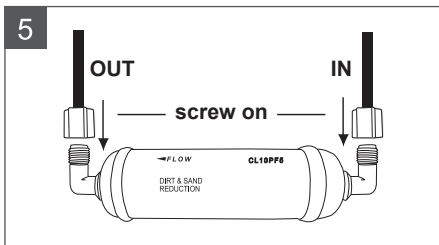
B. Optional Prefilter Installation



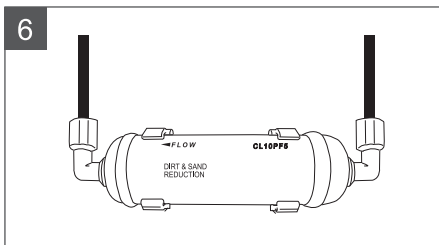
1. Drill a \varnothing 6mm hole for each bracket

2. Hammer in PVC plugs.

3. Screw the brackets onto the PVC plugs.



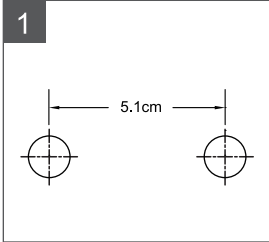
4. Wind seal tape on the elbow connectors. Note to wind seal tape in the direction of thread. Screw the elbow connectors onto the IN and OUT of prefilter.



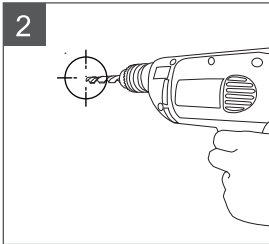
5. Assemble according to illustration.

6. Place the prefilter in the bracket to complete installation.

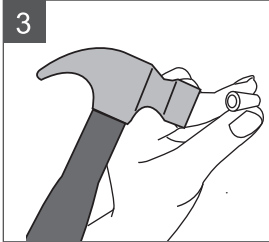
C. Unit Body Installation



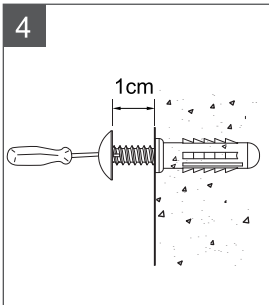
1. Use the wall-mount diagram to mark installation position.



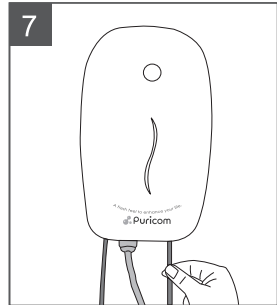
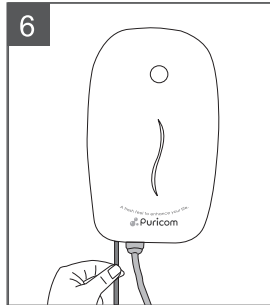
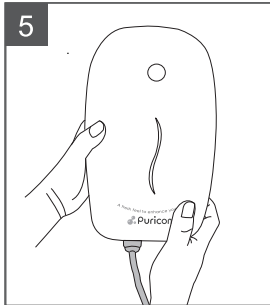
2. Drill \varnothing 6mm holes.



3. Hammer in PVC plugs.



4. Use a screwdriver to screw the screw into the PVC plug. The screw protrusion must be uniform (± 10 mm) to avoid damage to unit body.



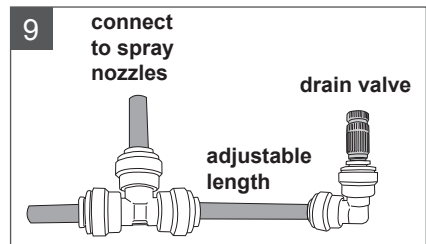
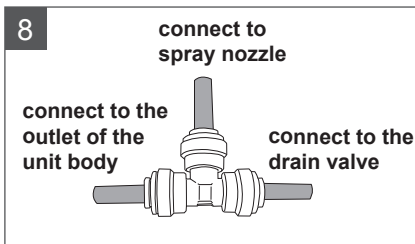
5. Hang the BUBU unit body.

6. Connect the outlet PE tube from the prefilter to the inlet of the unit body.

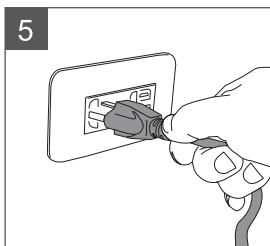
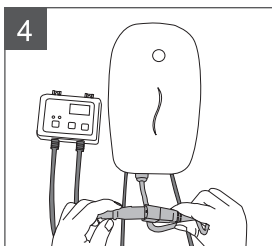
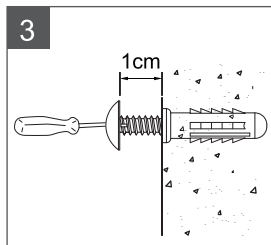
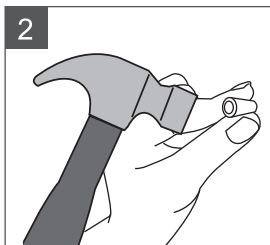
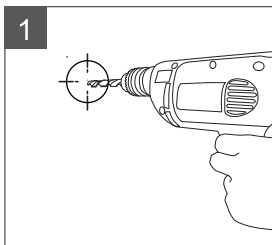
7. Connect a PE tube to the outlet of the unit body.

8. Install a tee connector on the outlet nylon tube of the unit body.

9. The tee connector connects to the nylon tube that joins the spray nozzles, and the drain valve. Place the drain valve at an appropriate drainage point. Adjust the drain tube according to need.

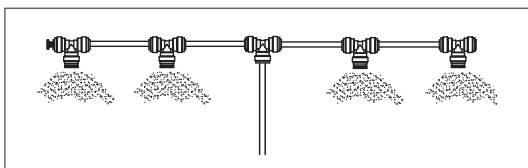


D. Timer Control Box Installation (for optional)



1. Drill \varnothing 6mm holes.
2. Hammer in PVC plugs.
3. Use a screwdriver to screw the screw into the PVC plug. The screw protrusion must be uniform (± 10 mm) to avoid damage to time control box.
4. Connect the power cords of BUBU unit body and time control box. Hang up the time control box.
5. Plug in power when all installation steps are complete.

E. Spray Nozzle Installation

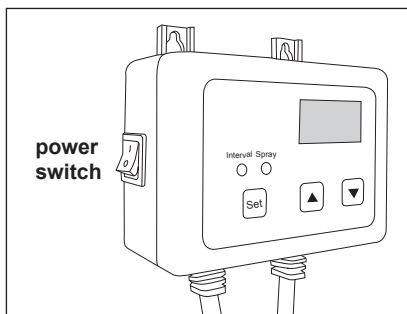


For optimal effect, space the nozzles evenly on either side of the nylon tube.

■ START-UP

1. Turn on the diverter valve.
2. Plug in power.
3. Turn on time control box and BUBU unit body power - ○
4. Set spray/interval time. See p.13 for spray/ interval time setting.
5. Enjoy BUBU misting system.
6. Do not forget to turn off power, unplug and turn off diverter valve (water supply) after use.

■ SPRAY/ INTERVAL TIME SETTING



Plug in and turn on time controller power switch located on the left side of the box.

Default setting:

Spray time 30sec. (max. 250 sec.)
Interval time 30sec. (max. 250 sec.)

Spray time setting:

1. Press **Set** and the 'spray time indicator' (blue) starts to flash.
2. Press ▲▼ to adjust spray time (unit: seconds).

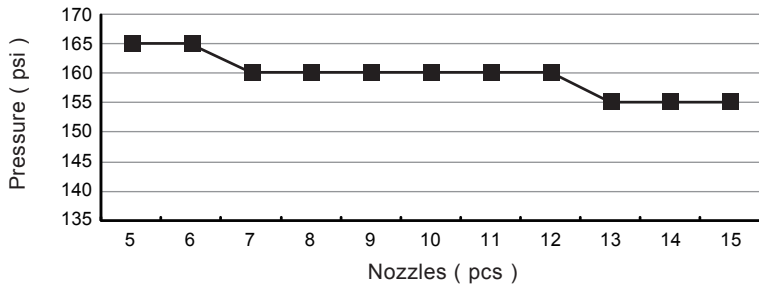
Interval time setting:

1. Press **Set** and the 'interval time indicator' (green) starts to flash.
2. Press ▲▼ to adjust spray time (unit: seconds).
3. 3 seconds after completing time setting, if no further adjustment is made, the system will exit setting mode and begin operating with new spray / interval time.

■ SPRAY NOZZLE TECHNICAL INFORMATION

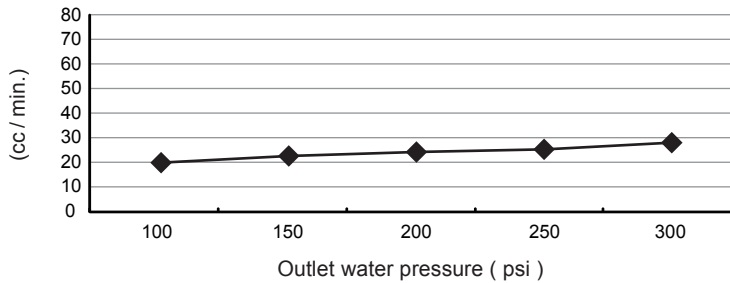
A. Spray Nozzle Quantity V.S. Outlet Water Pressure (Inlet water pressure 20psi)

Nozzle(pcs)	5	6	7	8	9	10	11	12	13	14	15
■	165	165	160	160	160	160	160	160	155	155	155



B. Outlet Water Pressure V.S. Nozzle Flow Rate (Unit: cc/min., Inlet water pressure 20psi)

Outlet water pressure (PSI)	100	150	200	250	300
◆	20	22	24	26.5	28



■ TROUBLESHOOTING

Problem	Inspection Point	Solution
No water or very little water coming out of nozzle	<ol style="list-style-type: none"> 1. Check for blockage in nozzles and tubes. 2. Check pump output water pressure. 	<ol style="list-style-type: none"> 1. Clean or Replace nozzle and / or tubing. 2. See solution for “Insufficient pump outlet pressure”.
Pump not working	<ol style="list-style-type: none"> 1. Check if power indicator is lit. 2. Check if pump indicator is lit. 	<ol style="list-style-type: none"> 1. If not lit, call customer service. 2. If not lit, call customer service.
Insufficient pump outlet pressure	<ol style="list-style-type: none"> 1. Check for blockage in prefilter. 2. Check pump head cap for leakage. 3. Check for blockage in the solenoid valve. 	<ol style="list-style-type: none"> 1. Replace prefilter. 2. Contact service center for pump replacement. 3. Clean the solenoid valve.
Time control box not working	<ol style="list-style-type: none"> 1. Check wiring 	<ol style="list-style-type: none"> 1. Install the time control box as instructed in the manual.
Drain valve is faulty	<ol style="list-style-type: none"> 1. Check pump outlet pressure . 2. Check if drain vlave is functioning. 	<ol style="list-style-type: none"> 1. See solution for “insufficient pump outlet pressure”. 2. If not functioning, call customer service.

*** When all above fails, please contact customer service ***

Visit PuricomUSA.com or call 1-800-803-4551

Email: info@puricomusa.com

