



# ANCHORS HEAVY STUFF TO PLASTERBOARD

## TWISIT SELF-DRIVE

up to  
**20kg**



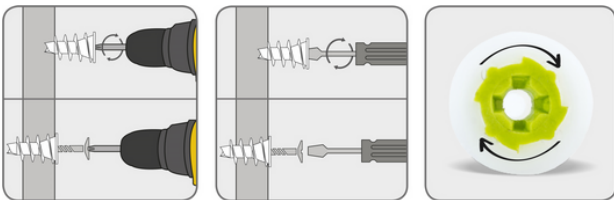
**THE ONLY SELF-DRIVE THAT WON'T OVERTIGHTEN**

The TwistIt self-drive is designed for fastening light loads to plasterboard. The key differentiator is that unlike normal metal and nylon self-drives, you cannot overtighten the TwistIt.

### BENEFITS

- Design includes inner cam that rotates once outer cam reaches maximum torque.
- Quick and easy installation.
- Self-drilling with standard screwdriver or drill.
- No over tightening
- Perfect to hang picture frames, light switches etc.

Holds up to 20% more than other self-drives



Install with a screwdriver or drill

### PERFORMANCE INFORMATION

#### Dimensions

	Fixing length	Min thickness to supporting layer	Screw size
TwistIt self drive	28mm	35mm	3.5 mm / 6G diameter x 30mm length screw

#### Basic performance data

Performance data for single fixing without influence of edge distance and spacing.

Loads\*

	Shear	Tension
Load	0.15kN	0.8kN

Weights shown indicate max. shear load (straight down load adjacent to the wall, not on a cantilever or fixed away from the wall) on 10mm plasterboard.

\* Independently tested on 15mm plasterboard