

GRIPIT

ANCHORS HEAVY STUFF TO PLASTERBOARD



One yellow holds up to **30KG**

15MM DRILL BIT

Curtain rails, blinds and picture frames



One brown holds up to **50KG**

20MM DRILL BIT

AV equipment, cabinets and bathroom suites



One red holds up to **40KG**

18MM DRILL BIT

Shelves, mirrors and shower units



One blue holds up to **60KG**

25MM DRILL BIT

Wall mounted TVs, radiators, kitchen units

† Drill bits sold separately

Gripit Plasterboard Anchors are designed for use with all types of plasterboard installations. Using their uniquely designed slim gripping wings, the Gripit Anchors folds out in the gap behind the plasterboard to create a vice like grip and distribute weight more effectively than conventional anchors or plugs.

BENEFITS

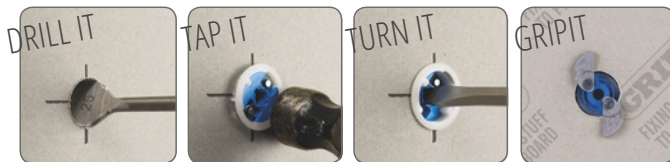
- Suitable for all plasterboard types (10mm to 13mm)
- No need for battening or additional anchor points.
- Removable and reusable

PERFORMANCE INFORMATION

Loads

	15mm	18mm	20mm	25mm
Diameter (mm)	15	18	20	25
Length (mm)	11.5	11.5	11.5	11.5
Screw sizes diameter (mm)	4.0	5.0	M6	M8
Screw sizes length (mm)	25	30	30	30
Min Spacing between Gripit centres (mm)	25	30	50	100

Fit with a drill and screwdriver, simply...



BASIC PERFORMANCE DATA

Shear

Weight suspended from a fixing, mounted in a vertical wall with a load or weight attached to that fixing and acting vertically downwards.

	15mm	18mm	20m	25m
Substrate thickness (mm)	Up to 13mm	Up to 13mm	m Up to 13mm	m Up to 13mm
Safe Load*	30kg	40kg	50kg	60kg
Safe Load**	40kg	50kg	55kg	60kg

Tension

The force applied to the fixing is 'pulled' away from the wall.

	15mm	18mm	20m	25m
Substrate thickness (mm)	Up to 13mm	Up to 13mm	Up to 13mm	Up to 13mm
Safe Load*	12kg	13kg	14kg	15kg
Safe Load**	15kg	16kg	18kg	22kg

* Independently tested on 10mm* and 13mm** Aus/NZ standard plasterboard

GR0049 *Not suitable for full motion or cantilever TV brackets. *Do not install on damp, weak, or damaged drywall. *Should not be used with objects that have continuous or repetitive loading/unloading, movement, vibration or rotation. *Always refer to manufacturer's instructions before fixing any object to plasterboard with Gripit and use the maximum recommended number of fixings

FOR MORE INFORMATION PLEASE VISIT WWW.GRIPITFIXINGS.COM.AU