

stryker®

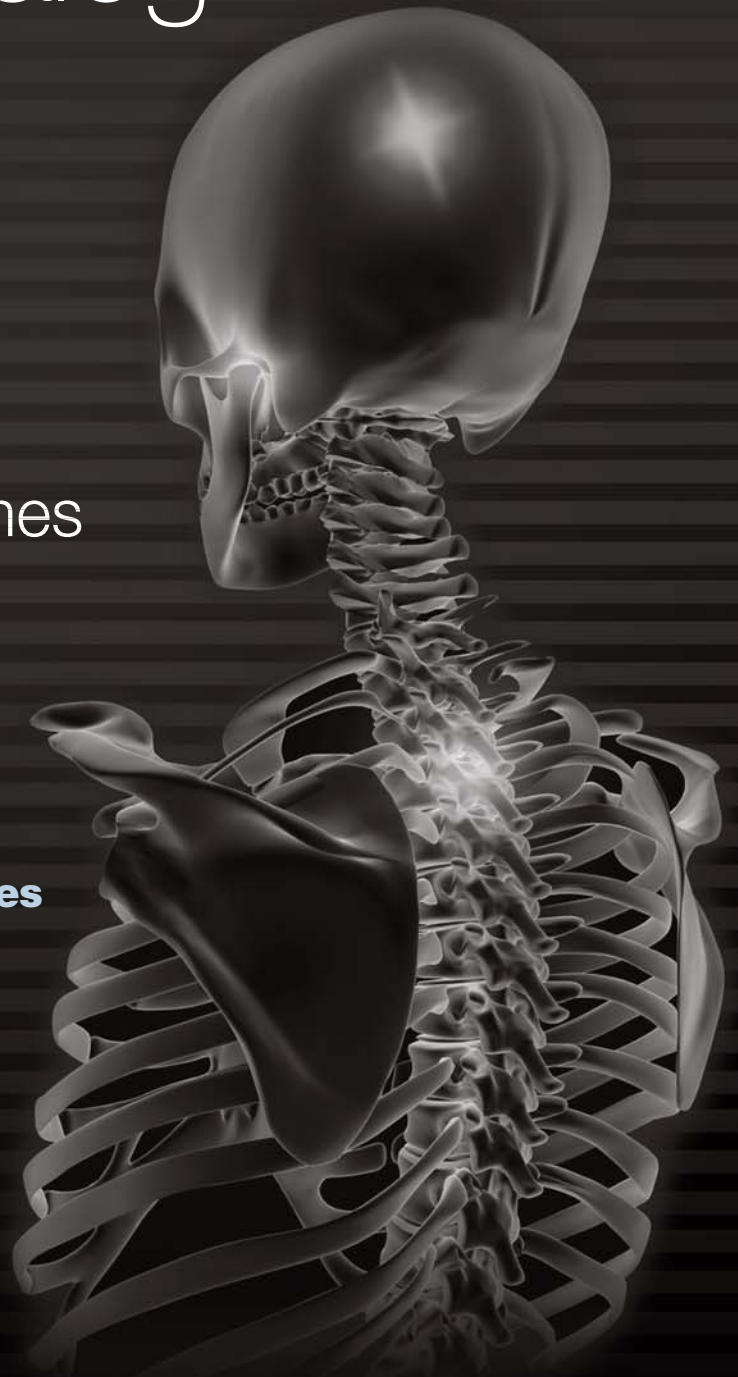
Neuro Spine ENT

Neuro Spine ENT

Product Catalog

access
to better Outcomes

Advancing meaningful innovation
Improving patient's lives



Contents

pneumatic

Maestro Drills

electric

Sumex Drill

U Drill

UHT Drill

Saber Drill

ESSx Microdebrider

Micro Saw

Universal Driver

bone mill

The Mill

ultrasonic aspirator

Sonopet Universal

2000
access
to better Outcomes



ess

Every life improved by innovations like CORE (Consolidated Operating Room Equipment) demonstrates Stryker's commitment to achieving better patient outcomes.



Stryker. Advancing meaningful innovations that provide greater access to better outcomes.

Maestro Pneumatic



5400-200-000 Maestro Drill

5400-201-000 Maestro Drill with Handswitch



Irrigation Clips

- 5100-010-272 Long Elite Irrigation Clip
- 5100-010-270 Medium Elite Irrigation Clip
- 5100-010-210 Short TPS Irrigation Clip
- 5100-010-200 Medium/Long TPS Irrigation Clip

Precision Round Two Flute Bur with RIM Glide Technology



Ordering Information

- 5820-009-030 3.0mm Precision Round Two Flute Bur
- 5820-009-040 4.0mm Precision Round Two Flute Bur
- 5820-009-050 5.0mm Precision Round Two Flute Bur
- 5820-009-060 6.0mm Precision Round Two Flute Bur
- 5820-009-075 7.5mm Precision Round Two Flute Bur

SD/PD Series Elite Attachments



5100-120-450 SD/PD Series Elite Medium Straight



5100-120-450s1 SD/PD Series XL Elite Medium Straight



5100-120-470 SD/PD Series Elite Long Straight



5100-120-470s1 SD/PD Series XL Elite Long Straight



5100-120-480 SD/PD Series Elite Extra Long Straight



5100-120-480s1 SD/PD Series XL Elite Extra Long Straight



5100-120-484 SD/PD Series Elite Extra Long Straight w/ Bur Guard



5100-120-485 SD/PD Series Elite Extra Long Plus Straight



5100-120-490 SD/PD Series Elite Extra Long Plus Straight



5100-120-452 SD/PD Series Elite Medium Angled



5100-120-452s1 SD/PD Series XL Elite Medium Angled



5100-120-472 SD/PD Series Elite Long Angled



5100-120-482 SD/PD Series Elite Extra Long Angled



5100-120-492 SD/PD Series Elite Extra Long Plus Angled

Maestro Pneumatic

PD Series Attachments



5400-210-090 PD Series Extra Long Straight RX



5400-210-070 PD Series Straight AM



5400-210-072 PD Series Angled AM



5400-210-050 PD Series Straight M



5400-210-052 PD Series Angled M



5400-210-020 PD Series Straight O



5400-210-011 Right Angle Attachment



5400-210-501 Adjustable Depth Drill Guide



5400-210-060 PD Series Perforator Chuck



5100-060-001 Zyphr Perforator Bit (14/11mm)



◀ 5400-206-000 Maestro Irrigation Console

- Self-priming
- Controlled flow rates
- Uses same irrigation cassette as Core Electric

DuraGuards



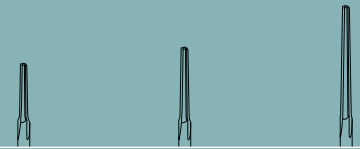
12 mm	5400-210-057	Fixed
	5400-210-257	Steering
16 mm	5400-210-058	Fixed
	5400-210-258	Steering
25 mm	5400-210-059	Fixed
	5400-210-259	Steering



5400-210-059s1 PD Series Extended Footed Attachment

Tapered Router

For use with
DuraGuards and
D-Attachment



Head Diameter (mm)	1.5	1.7	1.7
Head Length (mm)	12.0	16.0	25.0
DuraGuard Router	D-57 5400-071-057	D-58 5400-071-058	D-59 5400-071-059

5400-210-056
"D" Attachment



5400-071-059s1 Extended Router

Maestro Accessories



5400-006-000 Diffuser (10/pkg)

5400-005-000 Oil Cartridge (10/pkg)

- Separate oil cartridge and diffuser for more consistent lubrication

◀ 5400-218-000
Universal Foot Pedal

- Three functional operations (exhausting, non-exhausting, handswitch)
- Variable speed control

5400-207-000
Non-Exhaust Foot Pedal

5400-208-000
Exhausting Foot Pedal

5400-279-000
Maestro Sterilisation Case

Notes

Sumex Drill

SD/PD Series Elite Attachments



5400-130-000 Sumex Drill



5400-131-000 Sumex Handswitch

PD Series Attachments



5400-210-070 PD Series Straight AM



5400-210-072 PD Series Angled AM



5400-210-090 PD Series Extra Long Straight RX



5400-210-011 Right Angle Attachment



5400-210-050 PD Series Straight M



5400-210-052 PD Series Angled M



5400-210-501 Adjustable Depth Drill Guide



5400-210-020 PD Series Straight O



5400-210-060 PD Series Perforator Chuck



5100-060-001 Zyphr Perforator Bit (14/11mm)



5100-120-450 SD/PD Series Elite Medium Straight



5100-120-450s1 SD/PD Series XL Elite Medium Straight



5100-120-470 SD/PD Series Elite Long Straight



5100-120-470s1 SD/PD Series XL Elite Long Straight



5100-120-480 SD/PD Series Elite Extra Long Straight



5100-120-480s1 SD/PD Series Elite Extra Long Straight



5100-120-484 SD/PD Series Elite Extra Long Straight w/ Bur Guard



5100-120-485 SD/PD Series Elite Extra Long Plus Straight



5100-120-490 SD/PD Series Elite Extra Long Plus Straight



5100-120-452 SD/PD Series Elite Medium Angled



5100-120-452s1 SD/PD Series XL Elite Medium Angled



5100-120-472 SD/PD Series Elite Long Angled



5100-120-482 SD/PD Series Elite Extra Long Angled



5100-120-492 SD/PD Series Elite Extra Long Plus Angled

Tapered Router

For use with
DuraGuards and
D-Attachment

Head Diameter (mm)	1.5	1.7	1.7
Head Length (mm)	12.0	16.0	25.0

DuraGuard Router	D-57 5400-071-057	D-58 5400-071-058	D-59 5400-071-059
------------------	----------------------	----------------------	----------------------

5400-210-056
"D" Attachment



5400-071-059s1 Extended Router

DuraGuards

12 mm	5400-210-057	Fixed
	5400-210-257	Steering
16 mm	5400-210-058	Fixed
	5400-210-258	Steering
25 mm	5400-210-059	Fixed
	5400-210-259	Steering



5400-210-059s1 PD Series Extended Footed Attachment

U Drill/UHT Drill



5400-100-000 CORE U Drill



5400-110-000 UHT Drill



5100-009-000 Handswitch



5400-111-000 UHT Handswitch

U Series Elite Attachments



5100-010-450 U Series Elite Medium Straight



5100-010-470 U Series Elite Long Straight



5100-010-480 U Series Elite Extra Long Straight



5100-010-490 U Series Elite Extra Long Plus Straight



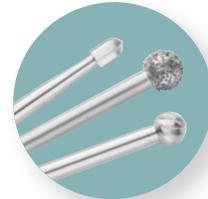
5100-010-452 U Series Elite Medium Angled



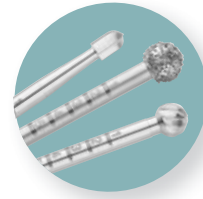
5100-010-472 U Series Elite Long Angled



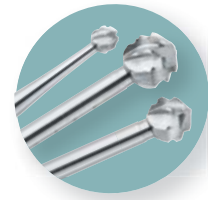
5100-010-482 U Series Elite Extra Long Angled



TPS Burs



Elite Burs



Zyphr™ Burs



MIS Burs

U Drill/UHT Drill

U Series Attachments



5100-010-090 U Series Extra Long Straight RX



5100-010-080 U Series Long Straight R



5100-010-070 U Series Long Straight AM



5100-010-072 U Series Long Angled AM



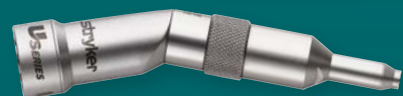
5100-010-050 U Series Medium Straight M



5100-010-052 U Series Medium Angled M



5100-010-020 U Series Short Straight O



5100-010-022 U Series Short Angled O



5100-010-501 U Series Adjustable Depth Drill Guide



5100-010-011 U Series Right Angle

U Series DuraGuards



12 mm	5400-010-057	Fixed
	5400-010-257	Steering
16 mm	5400-010-058	Fixed
	5400-010-258	Steering
25 mm	5400-010-059	Fixed
	5400-010-259	Steering



Tapered Router

For use with
DuraGuards and
D-Attachment

Head Diameter (mm)	1.5	1.7	1.7
Head Length (mm)	12.0	16.0	25.0
DuraGuard Router	D-57 5120-071-057	D-58 5120-071-058	D-59 5120-071-059

5400-010-056
U Series D Attachment



5100-010-060 U Series Perforator Chuck



5100-060-001
Zyphr Perforator Bit (14/11mm)



Irrigation Clips

- 5100-010-272 Long Elite Irrigation Clip
- 5100-010-270 Medium Elite Irrigation Clip
- 5100-010-210 Short TPS Irrigation Clip
- 5100-010-204 TPS Duraguard Irrigation Clip
- 5100-010-200 Medium/Long TPS Irrigation Clip
- 5400-010-204 Core Duraguard Irrigation Clip

Saber Drill



5400-120-000 Saber Drill



5400-121-000 Saber Handswitch



Irrigation Clips

- 5100-010-272 Long Elite Irrigation Clip
- 5100-010-270 Medium Elite Irrigation Clip



Elite Burs



Zyphr™ Burs



MIS Burs

SD/PD Series Elite Attachments



5100-120-450 SD/PD Series Elite Medium Straight



5100-120-450s1 SD/PD Series XL Elite Medium Straight



5100-120-470 SD/PD Series Elite Long Straight



5100-120-470s1 SD/PD Series XL Elite Long Straight



5100-120-480 SD/PD Series Elite Extra Long Straight



5100-120-480s1 SD/PD Series XL Elite Extra Long Straight



5100-120-484 SD/PD Series Elite Extra Long Straight w/ Bur Guard



5100-120-485 SD/PD Series Elite Extra Long Plus Straight



5100-120-490 SD/PD Series Elite Extra Long Plus Straight



5100-120-452 SD/PD Series Elite Medium Angled



5100-120-452s1 SD/PD Series XL Elite Medium Angled



5100-120-472 SD/PD Series Elite Long Angled



5100-120-482 SD/PD Series Elite Extra Long Angled



5100-120-492 SD/PD Series Elite Extra Long Plus Angled

MIS Attachments



SD/PD MIS Attachments



5100-120-920 SD/PD MIS Medium Straight



5100-120-950 SD/PD MIS Long Straight



5100-120-952 SD/PD MIS Long Curved



5100-120-922 SD/PD MIS Medium Curved



MIS Burs

- Variety of bur sizes and head styles

U Series MIS Attachments



5100-010-920 U Series MIS Medium Straight



5100-010-950 U Series MIS Long Straight



5100-010-952 U Series MIS Long Curved



5100-010-922 U Series MIS Medium Curved

ESSx™ Microdebrider



Precision Cutters



SharpEdge (5/pkg)
 Part # Dia. Length
5290-340-000 4.0 mm 8 cm



Aggressive (5/pkg)
 Part # Dia. Length
5290-648-000 4.0 mm 8 cm
5290-638-000 3.5 mm 8 cm
5290-628-000 2.5 mm 8 cm
5290-011-000 4.0 mm 11 cm



Aggressive Serrated (5/pkg)
 Part # Dia. Length
5290-645-000 4.0 mm 8 cm
5290-635-000 3.5 mm 8 cm



Jaguar (5/pkg)
 Part # Dia. Length
5290-540-000 4.0 mm 8 cm
5290-530-000 3.5 mm 8 cm



Angled Aggressive 60° (5/pkg)
 Part # Dia. Length
5290-760-100 4.0 mm 11 cm



Angled Aggressive 40° (5/pkg)
 Part # Dia. Length
5290-740-100 4.0 mm 11 cm



Angled Aggressive 12° (5/pkg)
 Part # Dia. Length
5290-744-100 4.0 mm 11 cm



Angled Aggressive 40° Convex (5/pkg)
 Part # Dia. Length
5290-740-200 4.0 mm 11 cm



Angled Aggressive Serrated 40° (5/pkg)
 Part # Dia. Length
5290-440-100 4 mm 11 cm
5290-435-100 3.5 mm 11 cm



Angled Aggressive Serrated 60° (5/pkg)
 Part # Dia. Length
5290-640-100 4 mm 11 cm
5290-635-100 3.5 mm 11 cm

Burs



Hooded Round Bur (5/pkg)
 Part # Dia. Length
5290-647-000 3.0 mm 8 cm

Accessories

5290-075-000 (10/pkg)
 Irrigation Cassettes

Micro Saw

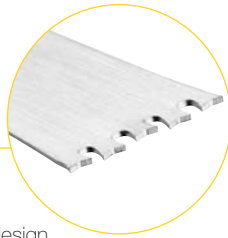


6400-034-000 Sagittal Saw

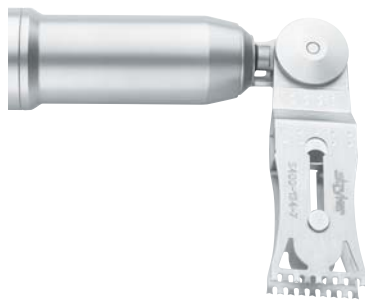
Micro Dual-Cut Blades

Dual-Cut Advantages

- 21% More efficient cut patented dual-cut blade design provides greater cutting efficiency, resulting in quicker cuts, longer blade life and improved handpiece reliability
- 35% Reduction of heat reduced friction with improved blade efficiency results in less heat generated at the point of blade contact
- Patent pending



Sagittal Saw Advantages



- Rotating, indexing head
- 40% more power than TPS Sagittal Saw

Universal Driver



6400-099-000 Universal Driver

4100-125-000
Pin Collet
(Accepts pins from .078-.125" diameter)



4100-062-000
Wire Collet
(Accepts wires from .028-.078" dia.)

Drilling Attachments



4100-160-000 Trinkle Drill



4100-135-000 Hudson®/ Modified Trinkle Drill



4100-134-000 1/8" Keyless Drill



4100-133-000 1/4" Keyless Drill



4100-132-000 5/32" Keyed Drill Chuck



4100-131-000 1/4" Keyed Drill Chuck



4100-110-000 Synthes® Drill



4100-231-000 Reamer with Jacobs Chuck



The Mill

The Mill

5400-700-000

- Blades designed for a uniform, consistent bone yield
- Different blade sizes allow for desired bone granulation
- Blades come preassembled for simple set up and operation
- Single pass cutting action enables uniform particulate size with low temperature bone exposure



Ordering Information

- 5400-704-000** The Mill Cable
- 5400-702-000** Fine Blade, 3.2mm (5/pkg)
- 5400-701-000** Medium Blade, 5.0mm (5/pkg)
- 5400-703-000** Coarse Blade, 8.0mm (5/pkg)

5400-705-000

Sterilisation Container



5400-750-000

Mill Instrument Driver



System Accessories

CORE Console



5400-050-000 CORE Console with Integrated Irrigation Pump



5400-050-001 (10/Pkg)
CORE Irrigation Cassette

5290-075-000 (10/Pkg)
Hummer 4/ESSx
Irrigation Cassette

I-Switch



0277-200-100 I-Switch Wireless Receiver ▲

0277-100-100 I-Switch Wireless Footswitch

Footswitches



5400-007-000
NSE Bi-Directional Footswitch

5100-008-000 Bi-Directional Footswitch ►

5100-007-000 Uni-Directional Footswitch

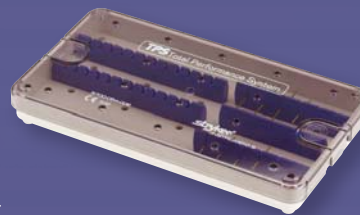


Sterilisation

- 6400-276-000 RemB Sterilisation Case - Small
- 6400-277-000 RemB Sterilisation Case - Medium
- 6400-278-000 RemB Sterilisation Case - Large
- 5400-276-000 CORE Sterilisation Case - Small
- 5400-277-000 CORE Sterilisation Case - Medium
- 5400-278-000 CORE Sterilisation Case - Large
- 5400-279-000 Maestro Sterilisation Case ▼



Storage



A variety of storage units and labels are available for cutting accessory organisation.

- 5700-054-001 Saber Bur Rack
- ◀ 5700-054-002 Saber/Stapes Bur Rack
- 0298-098-100 Bur Organiser

5400-410-000
CORE Accessory Cart



Sonopet[®]

Ultrasonic Aspirator



Micro Claw Neuro Bur

The Universal Handpiece

5450-820-000

- Lightweight, ergonomic design provides superb tactile feedback and requires no external cooling.
- 25kHz Universal handpiece partnered with an additional 34kHz handpiece, allows for tailoring of instrumentation to specific tissue/procedure.
- Frangible tip covers for improved visualisation and access.
- Large selection of specialty tips available.



Barracuda Micro Claw



Claw Nakagawa



Straight Payner 360°

Proprietary LT technology

Longitudinal + Torsional Vibration

SONOPET is the first ultrasonic aspirator to effectively address soft tissue and fine bone dissection by coupling longitudinal oscillation and torsional vibration.



	Working Side Amplitude	Topside Amplitude	Rotation Angle
Handpiece Tip			
Micro Claw Tip	300µm	45µm	8.6°

Sonopet[®] Smart Console

Smart Console

5450-850-000 (includes footpedal and IV pole)

- Automatically recognises handpieces for easy set-up
- Multiple frequencies of handpieces allow tissue selectivity for in situ evacuation in eloquent areas or aggressive removal of fine bone
- Suction, Irrigation and Ultrasonic functions can be used alone or simultaneously by using the SYNC mode
- Individual linear control of each output enables user to fine tune power balance

You'll have the power to fully complete the procedure to help you maximise your patients' outcomes.

 **SONOPET**[®]
Ultrasonic Aspirator



Sonopet Cart
5450-850-410

Footpedal
5450-850-007



Sonopet[®]

Universal Tips - Soft Tissue



5450-800-307 (N602-25) 5/pkg

Straight
Length: 4.5 in (11.4 cm)
OD 1.92 mm ID 1.50 mm



5450-800-309 (N602-25M) 5/pkg

Straight Micro Dia.
Length: 4.9 in (12.3 cm)
OD 1.77 mm ID 1.37 mm



5450-800-308 (N602-25L) 5/pkg

Straight Large Dia.
Length: 4.6 in (11.7 cm)
OD 2.47 mm ID 2.01 mm



5450-800-310 (N606-25) 5/pkg

Spetzler® Barracuda™
Length: 4.5 in (11.5 cm)
OD 1.92 mm ID 1.50 mm



5450-800-306 (N606-25L) 5/pkg

Spetzler® Large Dia. Barracuda™
Length: 4.6 in (11.8 cm)
OD 2.46 mm ID 2.01 mm



5450-800-316 (N605-25) 5/pkg

Ring Curette
Length: 4.4 in (11.2 cm)
OD 3.18 mm ID 2.26 mm



5450-800-301 (N802-25) 5/pkg

Superlong Straight
Length: 7.9 in (20.1 cm)
OD 1.92 mm ID 1.50 mm



Sonopet[®]

Universal Tips - Bone Cutting



5450-800-315 (N708-25) 5/pkg

Spetzler® Long Micro Claw™

Length: 4.7 in (11.9 cm)

OD 3.00 mm ID 1.19 mm



5450-800-313 (N658-25) 5/pkg

Spetzler® Open Angle Micro Claw™

Length: 4 in (10.1 cm)

OD 2.92 mm ID 1.19 mm



5450-800-312 (N617-25) 5/pkg

Payner™ 360

Length: 3.9 in (10 cm)

OD 3.15 mm ID 1.19 mm



5450-800-302 (N817-25) 5/pkg

Payner™ Superlong 360

Length: 7.7 in (19.6 cm)

OD 3.15 mm ID 1.19 mm



5450-800-304 (N858-25) 5/pkg

Spetzler® Superlong Open Angle Micro Claw™

Length: 7.7 in (19.6 cm)

OD 2.92 mm ID 1.19 mm



5450-800-303 (N808-25) 5/pkg

Spetzler® Superlong Micro Claw™

Length: 7.7 in (19.6 cm)

OD 3.00 mm ID 1.19 mm



5450-800-305 (N600-25) 5/pkg

Nakagawa Serrated Knife

Length: 4.3 in (10.9 cm)

OD 2.11 mm



access
to better Outcomes



The information presented in this brochure is intended to demonstrate the breadth of Stryker product offerings. Always refer to the package insert, product label and/or user instructions before using any Stryker product. Products may not be available in all markets. Product availability is subject to the regulatory or medical practices that govern individual markets. Please contact your Stryker representative if you have questions about the availability of Stryker products in your area.

Products referenced with TM designation are trademarks of Stryker.
Products referenced with ® designation are registered trademarks of Stryker.

Literature Number: 9100-927-017-SSP

Copyright © 2012 Stryker
Printed in Australia

Stryker Australia
8 Herbert Street
St Leonards
NSW 2065 Australia
Ph: + 61 2 9467 1000
Fax: + 61 2 9467 1010

Stryker New Zealand
515 Mt Wellington Highway
Auckland 1060 New Zealand
Ph: + 64 9 573 1890
Fax: + 64 9 573 1891

www.stryker.com