

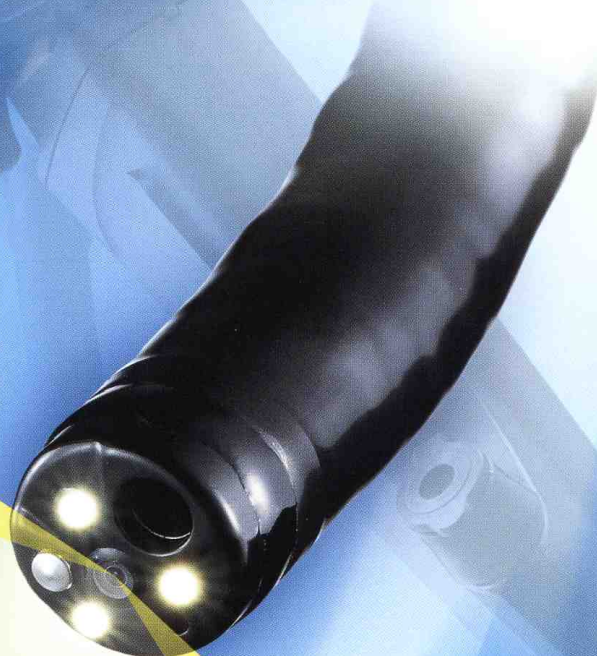
OLYMPUS[®]

Your Vision, Our Future

EVIS EXERA II COLONOVIDEOSCOPE

OLYMPUS CF TYPE Q180AL/I

EVIS
EXERA II



*Unique wide-angle lens technology
maximizes colonoscopy efficiency*

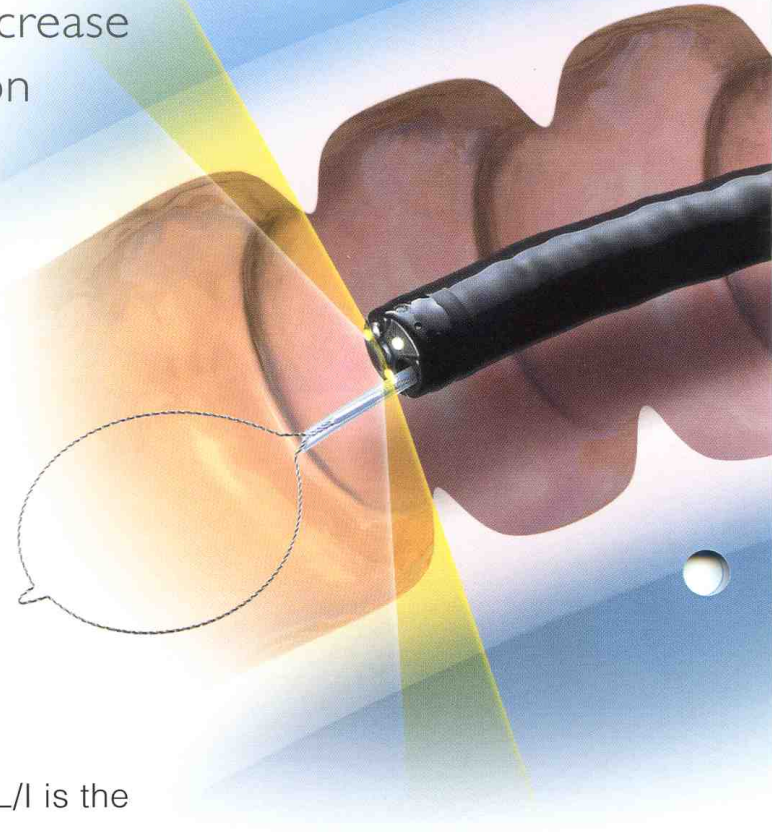
innoflex

Olympus wide-angle imaging facilitates easier insertion into the colon and may increase diagnostic yield, shorten examination times and enhance efficiency

The CF-Q180AL/I offers the widest field of view ever available in a colonoscope.

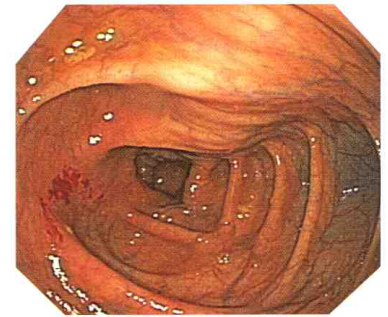
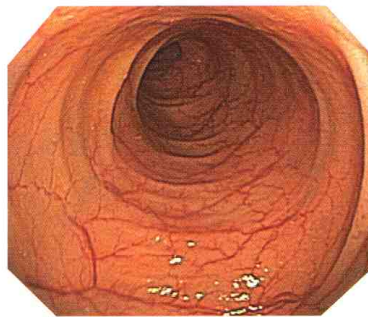
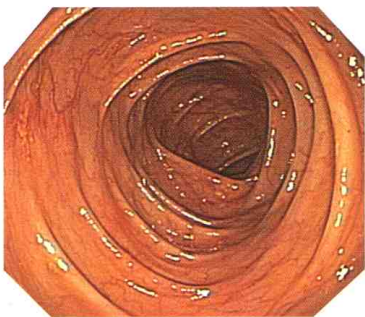
By increasing the field of view to 170°, the colonoscopist is able to view peripheral areas, making it possible to orient the scope in the colon more easily.

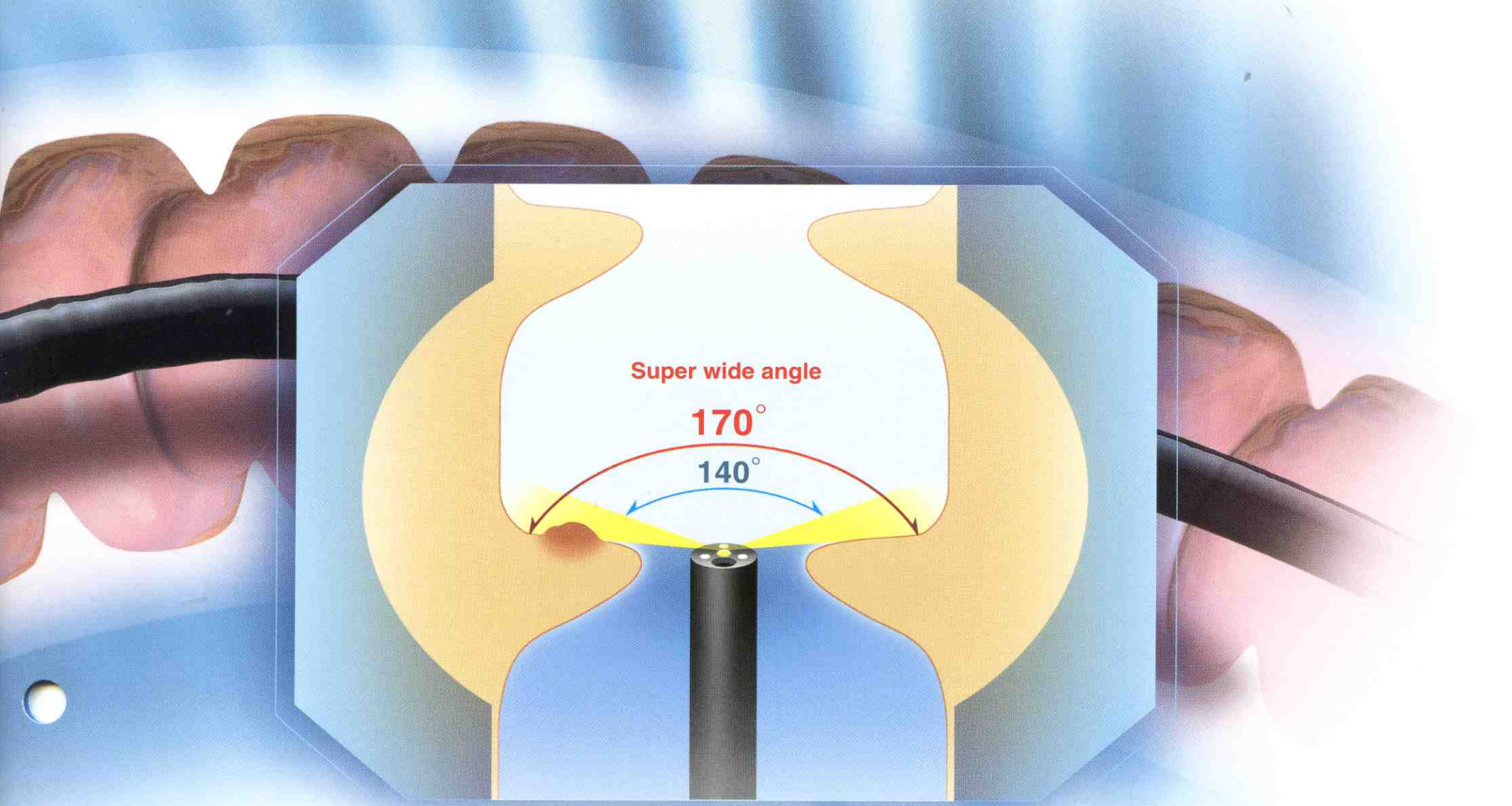
Supported by the Variable Stiffness innoflex function, superb image quality, improved brightness, and a 3.7 mm diameter channel to maximize therapeutic capability, the CF-Q180AL/I is the right choice for today's most demanding procedures.



■ High-resolution, superb wide-angle images with large-size display

With the CF-Q180AL/I, superb images are sharp and clear from one edge to the other, faithfully reproducing the texture of the mucosa and the distribution of capillaries. The large display size may make images easier to view and small details more apparent. The combination of these larger, high-quality images with the expanded 170° field of view should enable you to maneuver the scope more smoothly in the colon and make it easier to detect lesions, even ones behind folds. As a result, you can expect shorter examination times and enhanced procedural efficiency.





■ Auxiliary water jet facilitates mucosal cleansing

The CF-Q180AL/I's independent forward auxiliary water jet makes it easy to keep a clear view at all times. When combined with the dedicated flushing pump, it allows you to remove mucus and debris inside the colon at the touch of a button on the scope or on the footswitch unit. Keeping the view continuously clear ensures effective observation and may increase the diagnostic yield.



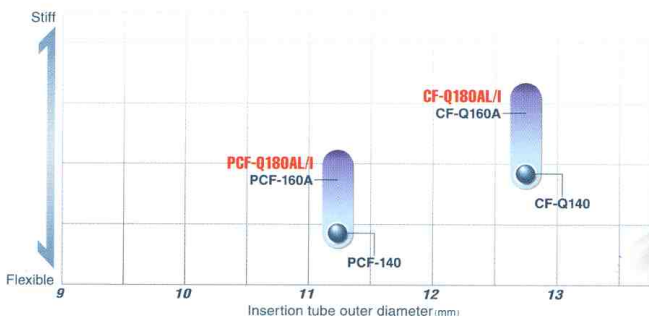
■ Many treatment options with a 3.7 mm channel

With an instrument channel measuring 3.7 mm across, the CF-Q180AL/I can easily accommodate a wide range of endo therapy accessories offering you an expanded array of treatment options, and satisfactory suction capability.



■ Olympus-exclusive Variable Stiffness capability

This innovative feature enables you to adjust insertion tube's flexibility to the patient's anatomy simply by turning the ring located below the control section.

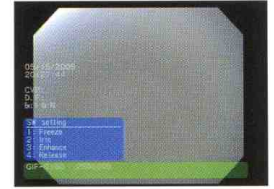




Main Features

- Olympus wide-angle imaging capability enables thorough observation of the colon and may facilitate scope maneuvering which could shorten examination times and enhance efficiency.
- Clear, sharp, high-quality images in a large-size display.
- NBI function is available in combination with the CV-180 and CLV-180.
- Auxiliary water jet can be combined with a dedicated flushing pump, enabling removal of mucus and debris in the colon at the touch of a button on the scope or on the footswitch unit.
- Highly acclaimed Variable Stiffness capability for adjustment of insertion tube flexibility to suit the patient's anatomy.
- Generous 3.7 mm diameter instrument channel accommodates a wide range of endo therapy accessories while preserving satisfactory suction capability.
- Insertion tube measuring 12.8 mm across with a distal end diameter of 13.2 mm.
- Wide-ranging 4-way angulation (180° up/down and 160° right/left) for superior observation through all contours of the colon.
- Ergonomically designed grip enhances scope maneuverability while easy-to-access controls and user programmable switches improve operability.
- Fully compatible with the CV-180/160/140.


- Scope ID function stores individual scope information in the built-in memory chip and displays it on the monitor, facilitating endoscopy suite management.

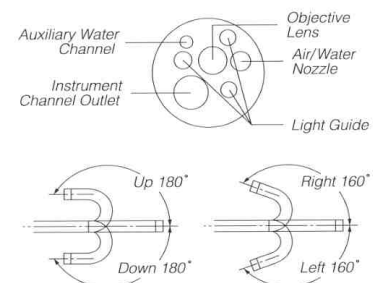


Start-up display



Specifications

Optical System	Field of view	170°
	Direction of view	Forward viewing
	Depth of field	3 to 100 mm
Distal End	Outer diameter	13.2 mm
Insertion Tube	Outer diameter	12.8 mm
Bending Section	Angulation range	Up 180°, Down 180°, Right 160°, Left 160°
Working Length		L:1680 mm, I:1330 mm
Total Length		L:2005 mm, I:1655 mm
Instrument Channel	Inner diameter	3.7 mm
	Minimum visible distance	3 mm from the distal end
	Endo therapy accessory entrance/exit position in field of view	



Specifications, design and accessories are subject to change without any notice or obligation on the part of the manufacturer.

OLYMPUS[®]

OLYMPUS MEDICAL SYSTEMS CORP.
Shinjuku Monolith, 3-1 Nishi-Shinjuku 2-chome, Shinjuku-ku, Tokyo 163-0914, Japan
OLYMPUS MEDICAL SYSTEMS EUROPA GMBH
Postfach 10 49 08, 20034 Hamburg / Wendenstrasse 14-18, 20097 Hamburg, Germany
OLYMPUS AMERICA INC.
3500 Corporate Parkway PO Box 610, Center Valley, PA 18034-0610, U.S.A.
OLYMPUS LATIN AMERICA, INC.
6100 Blue Lagoon Drive, Suite 390 Miami, Florida 33126-2087, U.S.A.
KEYMED LTD.
Keymed House, Stock Road, Southend-on-Sea, Essex SS2 5QH, England

OLYMPUS SINGAPORE PTE LTD.
491B River Valley Road #12-01/04, Valley Point Office Tower, Singapore 248373
OLYMPUS HONG KONG AND CHINA LIMITED
Room 1520-1527, Ocean Centre, 5 Canton Road, Tsimshatsui, Kowloon, Hong Kong
OLYMPUS (BEIJING) SALES & SERVICE CO., LTD.
Room.1202, NCI Tower, A12 Jianguomenwai Avenue Chaoyang District Beijing, 100022, China
OLYMPUS LIMITED LIABILITY COMPANY
117071, Moscow, Malaya Kaluzhskaya 19, bld. 1, fl.2, Russia
OLYMPUS AUSTRALIA PTY LTD
31 Gilby Road, Mount Waverley, VIC., 3149, Australia