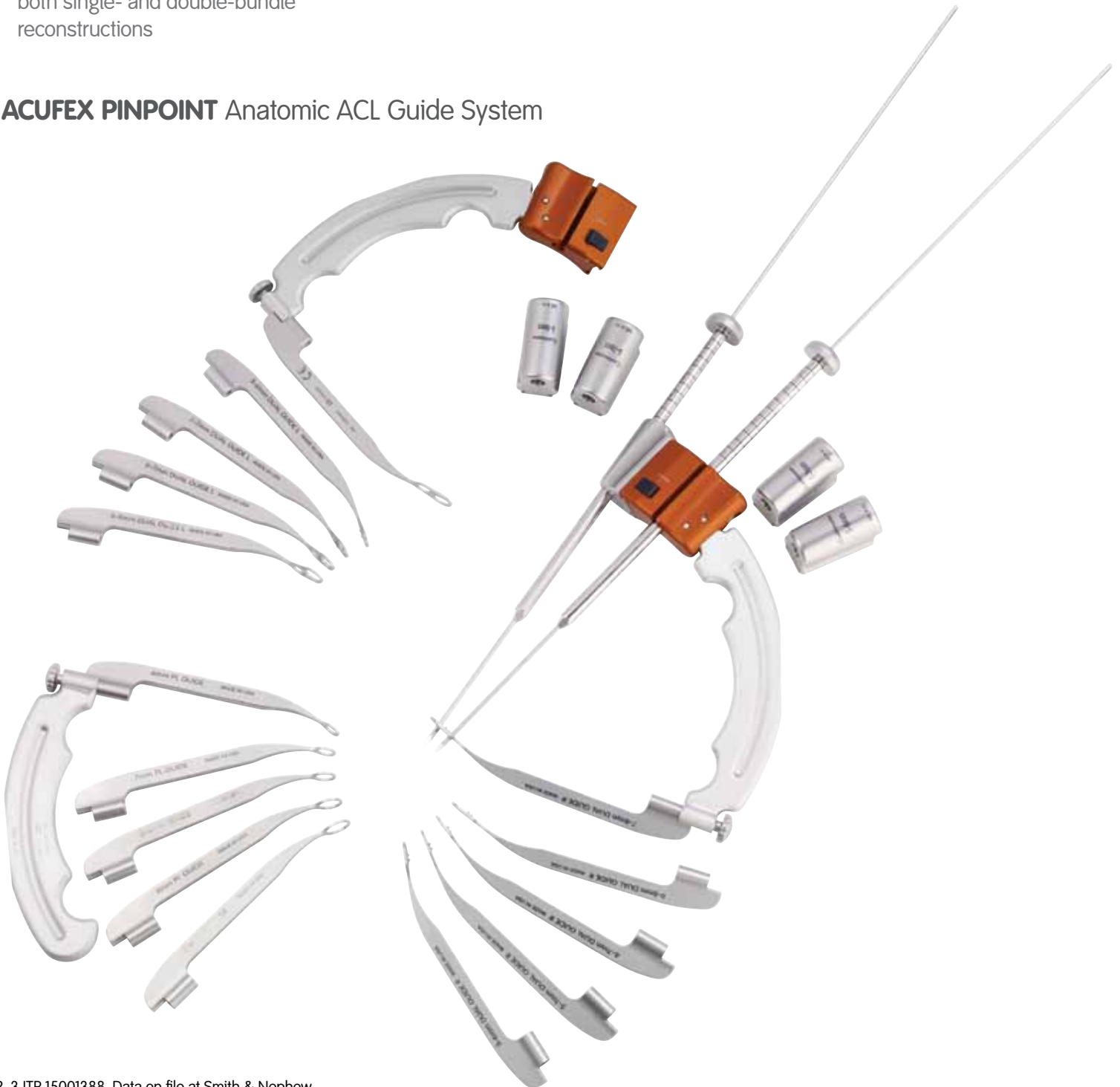
 **smith&nephew**
ACUFEX[®]
PINPOINT
Anatomic ACL Guide System

Precisely locate anatomic femoral
ACL insertion sites¹

This versatile and easy-to-use guide system enables visualization of the size and placement of femoral tunnel(s) in the native anatomic location.

- Enables transition from trans-tibial to medial portal drilling
- Facilitates accurate tunnel placement with or without bony landmarks²
- Determines position of AM and PL bundles
- Complete system accommodates both single- and double-bundle reconstructions
- Addresses different technique preferences for drilling, including inside-out and outside-in
- Features multiple sizes to help cover the native footprint
- Reliable reproducible technique³

ACUFEX PINPOINT Anatomic ACL Guide System



Easily configurable for a variety of techniques and tunnel sizes

Double-bundle, Outside-in TECHNIQUE



1

Select the size of the Double-bundle Guide to correspond with the size of the grafts and/or footprint of the native ACL.

Insert the Double-bundle Guide through the lateral portal with the knee in 90° of flexion.



2

Place the guide over the center of the femoral footprint and align the top of the guide with resident's ridge.

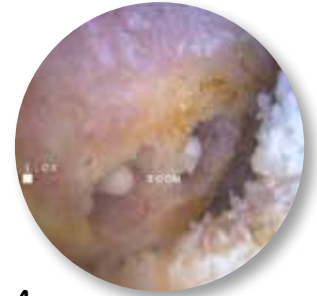
If the ridge is not visible, align the bottom flat surface of the guide parallel to the tibial plateau.



3

Lock the AM and PL bullets onto the lateral femoral condyle.

Viewing through the medial portal, drill the beath pins through the bullets until the tips exit the femur intra-articularly.



4

Remove the guide system from the joint and over-drill the beath pins with an appropriate size cannulated drill bits.

Single-bundle, Outside-in TECHNIQUE



1

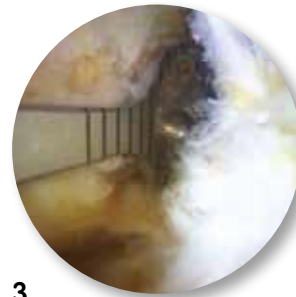
Select the size of the Single-bundle Guide to correspond with the size of the graft and/or footprint of the native ACL.

Insert the guide through the lateral portal with the knee in 90° of flexion.



2

Place the guide over the center of the femoral footprint and lock the bullet onto the lateral femoral condyle.



3

Viewing through the medial portal, drill the beath pin through the bullet until the tip exits the femur intra-articularly.



4

Remove the guide system from the joint and over-drill the beath pin with an appropriate size cannulated drill bit

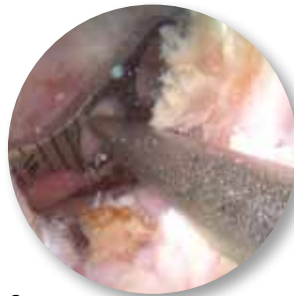
Double-bundle or Single-bundle Inside-out TECHNIQUE



1

Select the size of the Single- or Double-bundle Guide to correspond with the size of the graft(s) and/or footprint of the native ACL.

Insert the guide through the lateral portal with the knee in 90° of flexion.

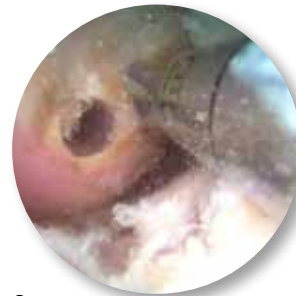


2

Place the guide over the center of the femoral footprint. If using the double-bundle technique, align the top of the guide with resident's ridge.

If the ridge is not visible, align the bottom flat surface of the guide parallel to the tibial plateau.

Place the Insertion Site Marking Awl through the Accessory Anteromedial (AAM) portal and mark the tunnel location in the center of each hole.

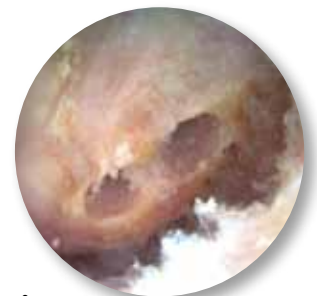


3

Remove the guide from the joint.

Through the AAM portal, place the beath pin(s) on the marked location(s) and secure slightly into the bone.

Slowly flex the knee to maximum flexion then drill the pin(s) while aiming for the lateral femoral epicondyle.



4

Complete the technique by over-drilling the pin(s) through the AAM portal, first with a 4.5 mm ENDOBUTTON® drill and then with an appropriate size cannulated drill bit.

Use for Double-bundle, Outside-in Technique

Use for Single-bundle, Outside-in Technique

Use for Inside-out Technique



Benefits of using the ACUFEX PINPOINT Anatomic ACL Guide System

Enhanced Visualization

- Optimized for use in 90° of flexion
- Designed for use in the lateral portal
- Allows scope to be placed in the medial portal

Accurate Tunnel Placement and Size¹

- Determine tunnel placement and size prior to drilling
- Accounts for anatomic relationship of AM and PL bundles

Complete Footprint Coverage

- Assess femoral footprint coverage
- Depth markings in one-millimeter increments
- Guides feature multiple size templates

Versatility

- Inside-out and outside-in drilling options
- Single and double bundle configurations
- Primary and revision cases

All guides laser marked at 1 mm increments – aiding native footprint length estimation

Top of guide aligns with resident's ridge; angle ensures tunnels offset by 15°

2 mm bone bridge between tunnels

Flat surface aligns parallel to tibial plateau

Teeth on underside of guides aid in securing guide on footprint



For more information about the ACUFEX PINPOINT Anatomic ACL Guide System, contact your sales representative at +1 800 343 5717.



Ordering Information

ACUFEX PINPOINT Anatomic ACL Guide System

Reference #	Description
72203454	ACUFEX PINPOINT Anatomic ACL Guide System

System includes

72203433	6 mm Single-bundle Guide
72203434	7 mm Single-bundle Guide
72203435	8 mm Single-bundle Guide
72203436	9 mm Single-bundle Guide
72203437	10 mm Single-bundle Guide
72203438	5-6 mm Double-bundle Guide, Left
72203439	5-7 mm Double-bundle Guide, Left
72203440	6-7 mm Double-bundle Guide, Left
72203441	6-8 mm Double-bundle Guide, Left
72203442	7-8 mm Double-bundle Guide, Left
72203443	5-6 mm Double-bundle Guide, Right
72203444	5-7 mm Double-bundle Guide, Right
72203445	6-7 mm Double-bundle Guide, Right
72203446	6-8 mm Double-bundle Guide, Right
72203447	7-8 mm Double-bundle Guide, Right
72203425	Outside-in Aimer Arm, Left
72203426	Outside-in Aimer Arm, Right
72203432	Inside-out Handle
72203427	5-6 mm Double-bundle Bullet Support
72203428	5-7 mm Double-bundle Bullet Support
72203429	6-7 mm Double-bundle Bullet Support
72203430	6-8 mm Double-bundle Bullet Support
72203431	7-8 mm Double-bundle Bullet Support
72203448	System Sterilization Tray
72203453	ACUFEX Insertion Site Marking Awl, 45°
72203450	4-point Bullet, 6.5" (x2)

Reference #	Description
72203452	ACUFEX PINPOINT Anatomic ACL Single-bundle Guide System

System includes

72203433	6 mm Single-bundle Guide
72203434	7 mm Single-bundle Guide
72203435	8 mm Single-bundle Guide
72203436	9 mm Single-bundle Guide
72203437	10 mm Single-bundle Guide
72203425	Outside-in Aimer Arm, Left
72203426	Outside-in Aimer Arm, Right
72203432	Inside-out Handle
72203451	Single-bundle System Sterilization Tray
72203453	ACUFEX Insertion Site Marking Awl, 45°
72203450	4-point Bullet, 6.5" (x1)