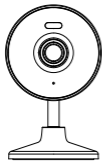


Smart Home Security Camera

K04 Quick Start Guide

What's in the Box?



Camera
(with mounting bracket)



Pack of Screws



USB Cable



Power
Adapter

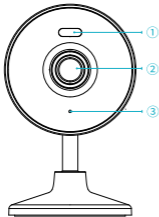


Bracket



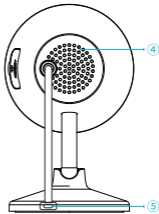
Quick Start
Guide

Product Diagram

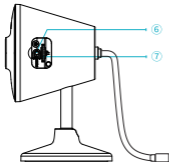


- ① Spotlight
- ② Camera Lens

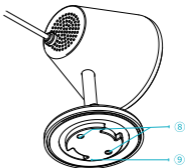
- ③ Microphone



- ⑤ Type-C Power Port



- ⑥ Reset Button
- ⑦ MicroSD Card Slot



- ⑧ Mounting Hole
- ⑨ Mounting Bracket

Light Indicators

Light Indicators	Camera Status
Flashing blue light	The device is connecting
Blue light always on	The device has successfully connected
Blue light off	Not connected to the power supply

Quick Start

Download & Add

Search the app store for 'TinoSec' app or use your browser to scan the QR code below to download, register and use. (by email, agree to the user agreement and obtain a verification code)

Scan the QR code to go to the link:



CAUTION

DO NOT use 3rd party QR code scanning tool or app to avoid scam or malware! Use QR code scanning app provided by your mobile phone system, e.g. the system camera app.

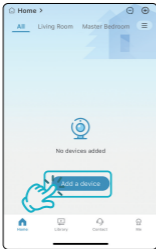
Add camera

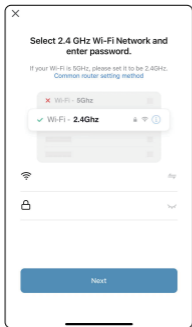
There are two ways to add a camera: QR code scanning, hotspot adding.



Add device by QR code

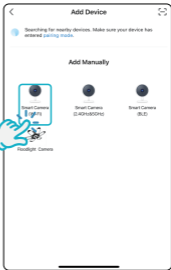
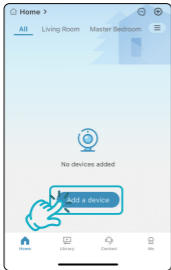
After clicking on the add device, select the "Smart Camera(Wi-Fi)", enter the 2.4Ghz wifi name and password, scan the QR code that appears on the phone with the device, and the connection will be successful.

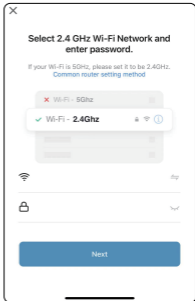
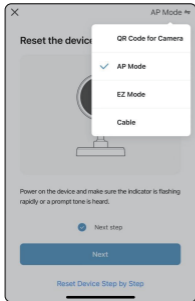


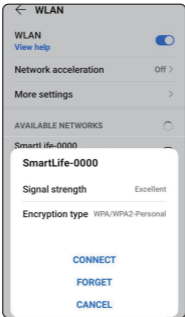


Add device by Hotspot

Select AP mode, enter WiFi name and password, then select AP hotspot Smartlife-XXXX, and return to the add step

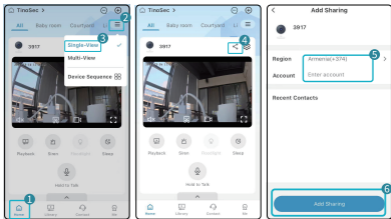






Sharing methods

Select the home menu, then select the menu bar in the upper right corner, select Single View, select the share button, enter the corresponding region and account, and click share.



Install The Device

Please install the camera in a position where its view will not be blocked, make sure it is within the coverage of the Wi-Fi network.

The device can be placed on a shelf or other surfaces to use, and also can be installed on a wall.

You can install the camera on a wall by the below method.

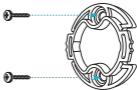


1) Mounting Bracket

a) Taking the bracket out of the package

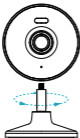


b) Use screws to mount the bracket to the target position

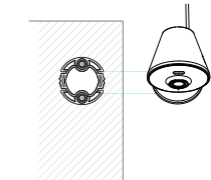


2) Install the camera

c) Align the screws on the camera with the screw holes on the bracket and rotate to screw them on



d) Align the snap of the camera base with the snap of the wall bracket and push firmly until locked



Product specification

Item	Specification
Image coding	H.264
Audio	Two-way audio
Storage media	Micro SD card (Up to 128GB)
Night vision light	Infrared light, Spotlight
Network	Wi-Fi (2.4GHz 802.11b/g/n)
Power	DC 5V/1A
Operating	-10° ~ 45° C

FAQ

Q: **The camera is netless or offline?**

- A:
1. Check whether the power supply is working properly
 2. Power off, restart the device and reconnect to the network (press the reset button for no less than 3 seconds)
 3. Areas with weak signal coverage
 4. Signal interference shielding in special places

Q: **How does the camera store the video**

- A:
1. The camera supports FAT32 format, the maximum capacity is 128G, automatic video recording after recognition to the card, automatic overwriting the original video and cyclic recording after the storage is full;
 2. Support the opening of cloud storage service to store video.