



IDC5
SOFTWARE
UPDATE

CAR 75.0.0



IDC5 CAR 75.0.0

The **IDC5 CAR 75.0** software update includes, once again, a large number of diagnostic developments, the best of TEXA's multi-brand diagnosis dedicated to cars and light commercial vehicles.

Using IDC5 CAR during your daily workshop activities means

having an avant-garde solution, rich in new diagnostic possibilities, special functions and technical information that are essential for completing even the most complex workshop operations professionally and with full customer satisfaction.

IDC5 CAR 75.0 includes the update of 74 makes. New diagnostic systems have been developed for these makes, which have never been released previously, and involve over **1100 models**. The work of TEXA's technical developers also led to further increasing the coverage of **ADAS, electric and hybrid vehicles**, the **interactive "DASHBOARD" screens** and **wiring diagrams**.

Moreover, the ENGLISH - AMERICAN language has been added.

IDC5 CAR 75.0 also includes the new features released through the continuous updates 74.0.1, 74.1.0, 74.2.0, 74.2.1, 74.2.2, 74.3, 74.3.1 and is characterised by over 11.000 new possible selections for the major makes on the market worldwide, among which: **ABARTH, ACURA, ALFA ROMEO, ASTON MARTIN, AUDI, BENTLEY, BMW, BUICK, CADILLAC, CHEVROLET, CHRYSLER, DODGE, FERRARI, FIAT, FORD, GENESIS, GMC, HONDA, HUMMER, HYUNDAI, INFINITI, ISUZU, JAGUAR, JEEP, KIA, LANCIA, LAND ROVER, LAMBORGHINI, LANCIA, LAND ROVER, LEXUS, LINCOLN, MAYBACH, MASERATI, MAZDA, MERCEDES-BENZ, MINI, MITSUBISHI, NISSAN, POLESTAR, PONTIAC, PORSCHE, ROLLS-ROYCE, SAAB, SATURN, SMART, SSANGYONG, SUBARU, TOYOTA, TROLLER, VOLKSWAGEN, VOLVO.**

Per conoscere più a fondo la straordinaria copertura messa a disposizione da TEXA, visita il sito:

www.texa.com/coverage

MAIN NEW FEATURES INCLUDED IN THE IDC5 CAR 75.0 VERSION

ADAS DEVELOPMENTS AND IMPLEMENTATIONS

Thanks to this update, many new vehicles are now covered as for the ADAS functionalities. Following are just a few:

AUDI

Q4 E-Tron/Sportback [21>]

- Front radar calibration;
- Front camera calibration;



CAR 75.0.0



- Rear camera calibration;
- Lane change assist;

E-Tron GT/RS E-Tron GT [21>]

- Front radar calibration;
- Front camera calibration;
- Rear camera calibration;
- Front and rear side radar calibration

FERRARI

812 Superfast [17>]

- Front camera calibration;
- Front radar calibration;

GTC4Lusso [16>20]

- Front camera calibration;
- Front radar calibration;

GTC4Lusso T [16>20]

- Front camera calibration;
- Front radar calibration;

Portofino [17>]

- Front camera calibration;
- Front radar calibration;

TOYOTA

The new adjustment "ECU calibration" has been developed for the "Park assist" system for the models:

- TOYOTA Corolla
- TOYOTA RAV4/RAV4 Plug-in
- TOYOTA Yaris
- TOYOTA C-HR
- TOYOTA Highlander
- LEXUS serie UX



VOLKSWAGEN

Arteon Shooting Brake [20>]

- Front radar calibration;
- Front camera calibration;
- 360° camera calibration;
- Lane change assist;

ID.4 [20>]

- Front radar calibration;
- Front camera calibration;
- 360° camera calibration;
- Lane change assist

HYBRID / ELECTRIC VEHICLES

TEXA's constant commitment in the world of multi-brand diagnosis has always played an essential role in the repair market. The introduction of electric and hybrid vehicles in the market has led us to pay careful attention to the addition of new vehicle selections and the development of new diagnostic systems specifically for this type of vehicles.

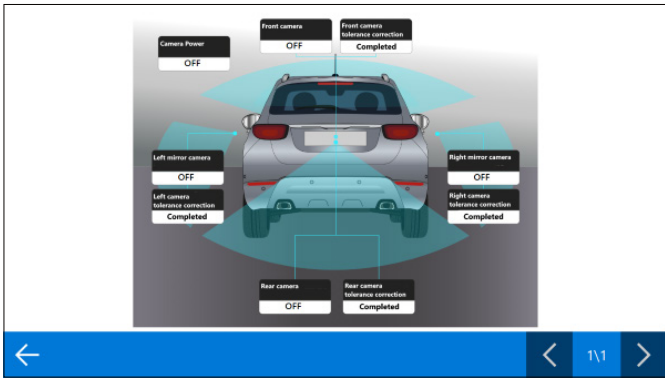
Among the main implementations, following are some models recently introduced in the market:

- AUDI Q4 E-Tron Sportback/E-Tron GT/RS E-Tron GT
- BMW iX3
- FORD Mustang Mach-E
- HYUNDAI Elantra/Sonata Hybrid
- MERCEDES-BENZ EQB
- MITSUBISHI Eclipse Cross PHEV
- TOYOTA C-HR
- VOLKSWAGEN ID.4

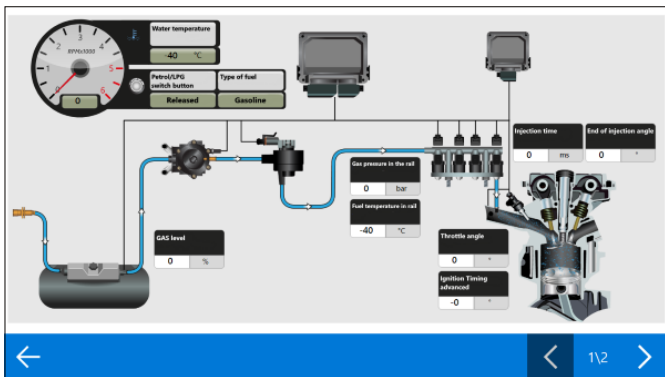
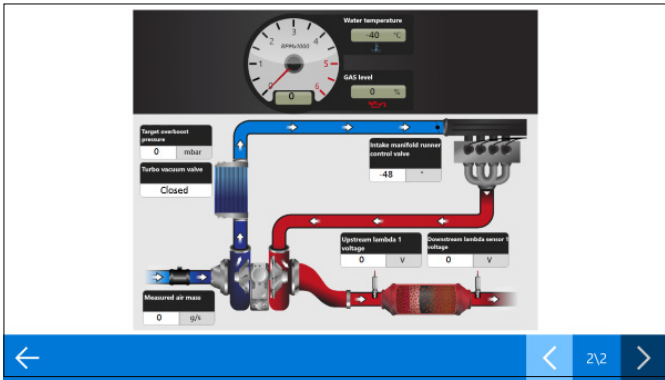
DASHBOARDS IN DIAGNOSIS

Other than the new type of DASHBOARD that will be included, we will illustrate others that can always be consulted from the PARAMETERS page. Here are some examples:

PARKING AID CAMERAS



REDUCING AGENT METERING SYSTEM



NEW DIAGNOSTIC FEATURES

CAR

ACURA

A new model has been created and the related diagnosis has been added:

- MDX [21>]

A new diagnosis of the "PARK ASSIST" system has been developed for the models:

- CDX
- MDX
- NSX
- RDX

A new diagnosis of the "BLUETOOTH" system has been developed for the models:

- CDX
- MDX
- NSX
- RDX

AUDI

New models have been created and the related diagnosis has been added:

- Q4 E-Tron [21>]
- Q4 E-Tron Sportback [21>]
- E-Tron GT [21>]
- RS E-Tron GT [21>]
- RS 3 [21>] Sportback/Sedan

A new diagnosis of the "HIGH VOLTAGE CONVERTER" system has been developed for the models:

- A6 / S6 / RS6
- A7 / S7 / RS7
- E-Tron / E-Tron Sportback/ E-Tron GT
- Q8 / SQ8 / RSQ8

A new diagnosis of the "HEAD-UP DISPLAY" system has been developed for the models:

- A6 / S6 / RS6
- A7 / S7 / RS7
- E-Tron / E-Tron Sportback/ E-Tron GT
- Q8 / SQ8 / RSQ8



CAR 75.0.0



A new diagnosis of the "PETROL INJECTION" system has been developed for the models:

- RS 3 [21>] Sportback/Sedan - 2.5i 20v TFSI

A new diagnosis of the "BATTERY CONTROL MODULE" system has been developed for the models:

- A6
- A7
- A8
- E-Tron / E-Tron Sportback
- Q5
- Q7
- Q8

A new diagnosis of the "APPLICATION SERVER 1 SYSTEM 2 JAVA" system has been developed for the models:

- Q4 E-Tron / Sportback

A new diagnosis of the "INSTRUMENTATION" system has been developed for the models:

- A3/S3/RS3 Sedan/Sportback
- A4 / S4
- A5
- R8

A new diagnosis of the "REAR-VIEW CAMERA" system has been developed for the models:

- A3 Sedan/Sportback
- S3 Sedan/Sportback
- RS3 Sedan/Sportback

A new diagnosis of the "ELECTRIC DRIVE" system has been developed for the models:

- A6
- A7
- E-Tron / E-Tron Sportback
- Q8

BMW

A new model has been created and the related diagnosis has been added:

- iX3 [21>]

A new diagnosis of the "HYBRID BATTERY" system has been developed for the models:

- Series 3 / 4 / 5 / 6 / 7 / 8
- X3 / X4 / X5 / X6 / X7



CAR 75.0.0



A new diagnosis of the "DC/DC CONVERTER" system has been developed for the models:

- Series 3 / 4 / 5 / 6 / 7 / 8
- X3 / X4 / X5 / X6 / X7

A new diagnosis of the "PETROL INJECTION" system has been developed for the models:

- Series 3 / 4
- X3 / X4 / X6
- Z4

A new diagnosis of the "INTEGRATED STARTER GENERATOR" system has been developed for the models:

- Series 3 / 4 / 5 / 6 / 7 / 8
- X3 / X4 / X5 / X6 / X7

A new diagnosis of the "TYRE PRESSURE" system has been developed for the models:

- Series 1 / 2 / 3 / 4 / 5 / 6
- X3 / X4

A new diagnosis of the "HIGH-VOLTAGE BATTERY CHARGE MANAGEMENT" has been developed for the model:

- iX3

CADILLAC

A new diagnosis of the "PARK ASSIST" system has been developed for the models:

- CTS
- CTS-V
- XT4

CHEVROLET

A new diagnosis of the "PARK ASSIST" system has been developed for the models:

- Blazer
- Camaro
- Malibu
- Silverado 1500/2500/3500

A new diagnosis of the "TYRE PRESSURE" system has been developed for the model:

- Trailblazer

CHRYSLER

New models have been created and the related diagnosis has been added:

- Grand Caravan [21>]
- Voyager [20>]



CAR 75.0.0



New diagnostic systems have been developed for the model Pacifica [17>]:

- STEERING LOCK
- ELECTRONIC KEY
- POWER MODULE
- ELECTRIC MOTOR 2
- TYRE PRESSURE
- HEADLIGHT ADJUSTMENT
- OCCUPIED SEAT DETECTION
- STEERING WHEEL AND SEAT HEATING
- REAR MULTIMEDIA SYSTEM
- PARKING AND CAMERAS

DODGE

New diagnostic systems have been developed for the model RAM 1500 [19>]:

- GPS
- DRIVER AND PASSENGER SIDE RUNNING BOARD
- OCCUPIED SEAT DETECTION
- REAR SEAT HEATING
- TRAILER BRAKE CONTROL
- TYRE PRESSURE

A new diagnosis of the "BODY COMPUTER" system has been developed for the models:

- RAM 1500/2500/3500/4500/5000

A new diagnosis of the "ELECTRONIC KEY" system has been developed for the model:

- RAM 1500

A new diagnosis of the "STEERING WHEEL AND SEAT HEATING" system has been developed for the models:

- Challenger
- Charger
- Durango
- RAM 1500/2500/3500/4500/5000



CAR 75.0.0



A new diagnosis of the "DIESEL INJECTION" system has been developed for the models:

- 500L

A new wiring diagram has been developed for the models 500X / 500L:

- 1.6DIESEL INJECTION

FORD

New models have been created and the related diagnosis has been added:

- Bronco [21>]
- Bronco Sport [21>]
- F-150 [21>]
- Mustang Mach-E [21>]

A new diagnosis of the "ADAPTIVE CRUISE CONTROL" system has been developed for the models:

- Bronco
- Bronco Sport
- Escape IV
- Explorer VI
- F-150
- Mustang Mach-E

A new diagnosis of the "AIRBAG" system has been developed for the models:

- Bronco
- Bronco Sport
- Escape IV
- Explorer VI
- F-150
- Mustang Mach-E



CAR 75.0.0



A new diagnosis of the "APPROACHING VEHICLE SOUND FOR PEDESTRIANS" system has been developed for the models:

- Escape IV
- Explorer VI

A new diagnosis of the "PARK ASSIST" system has been developed for the models:

- Bronco
- Bronco Sport
- Escape IV
- Explorer VI
- Maverick

A new diagnosis of the "BODY COMPUTER" system has been developed for the models:

- Expedition IV/MAX
- Explorer V/Facelift
- F150

A new diagnosis of the "AUTOMATIC TRANSMISSION" system has been developed for the models:

- Escape II
- Escape III/Facelift
- Focus III Hatchback Facelift/Sedan Facelift for the NORTH AMERICAN market
- Fusion Sedan

A new diagnosis of the "SUNROOF ECU" system has been developed for the model:

- Mustang VI Cabrio

A new diagnosis of the "ELECTRIC MOTOR CONTROL UNIT" system has been developed for the model:

- Mustang Mach-E

A new diagnosis of the "A/C" system has been developed for the models:

- Bronco Sport
- Escape IV
- Explorer VI
- Mustang Mach-E



CAR 75.0.0



A new diagnosis of the "DRIVING DYNAMICS CONTROL" system has been developed for the models:

- Escape IV
- Explorer VI
- F-150
- Focus IV
- Mustang Mach-E

A new diagnosis of the "DC/DC CONVERTER" system has been developed for the models:

- Bronco Sport
- Expedition IV
- Expedition IV MAX
- Explorer VI

A new diagnosis of the "STEERING COLUMN SWITCH UNIT" system has been developed for the models:

- Bronco
- Bronco Sport
- Escape IV
- Explorer VI
- F-150
- Mustang Mach-E

A new diagnosis of the "GATEWAY" system has been developed for the models:

- Bronco Sport
- Escape IV
- Explorer VI

A new diagnosis of the "PETROL INJECTION" system has been developed for the models:

- Escape II
- Escape III/Facelift
- Fiesta VI Hatchback Facelift/Sedan Facelift for the NORTH AMERICAN market
- Focus III Hatchback Facelift/Sedan Facelift for the NORTH AMERICAN market
- Fusion Sedan



CAR 75.0.0



A new diagnosis of the "GEAR SELECTOR LEVER" system has been developed for the models:

- Bronco Sport
- Escape IV
- Explorer VI
- Mustang Mach-E

A new diagnosis of the "BATTERY CONTROL MODULE" system has been developed for the models:

- Escape IV
- Explorer VI
- Mustang Mach-E

A new diagnosis of the "BATTERY CHARGER CONTROL MODULE" system has been developed for the models:

- Focus IV/
Turnier

A new diagnosis of the "INTEGRATED STARTER GENERATOR" system has been developed for the models:

- Focus IV/
Turnier

A new diagnosis of the "POWER STEERING" system has been developed for the models:

- Bronco
- Bronco Sport
- Escape IV
- Explorer VI
- F-150
- Mustang Mach-E

A new diagnosis of the "MULTIFUNCTION CAMERA" system has been developed for the models:

- F-150
- Mustang Mach-E



CAR 75.0.0



A new diagnosis of the "TRUNK" system has been developed for the models:

- Escape IV
- Explorer VI
- F-150
- Mustang Mach-E

GENESIS

New models have been created and the related diagnosis has been added:

- G90 [17>]
- G90 [20>] Facelift

A new diagnosis of the "PRE-CRASH SYSTEM" has been developed for the models:

- G80
- G90

A new diagnosis of the "DRIVER IDENTIFICATION SYSTEM" has been developed for the model:

- G70

GMC

A new diagnosis of the "PARK ASSIST" system has been developed for the models:

- Acadia
- Canyon
- Sienna 1500/2500/3500

HONDA

New diagnostic systems have been developed for the model e [20>]:

- PARK ASSIST
- BLUETOOTH
- RIGHT HEADLIGHT CONTROL UNIT
- LEFT HEADLIGHT CONTROL UNIT
- EXTERNAL POP-OUT HANDLE MANAGEMENT CONTROL UNIT
- ELECTRIC MOTOR CONTROL UNIT
- MULTI-FUNCTION DISPLAY
- EV CONTROL SYSTEM
- BATTERY CONTROL MODULE



CAR 75.0.0



- BATTERY CHARGER CONTROL MODULE
- DIGITAL EXTERIOR MIRRORS
- PARKING AID CAMERAS

A new diagnosis of the "PARK ASSIST" system has been developed for the models:

- Accord X Hybrid/Sedan
- Civic X Coupé/Hatchback/Sedan
- CR-V
- Fit
- HR-V
- Insight
- NSX
- Odyssey
- Passport

A new diagnosis of the "BLUETOOTH" system has been developed for the models:

- Accord X Hybrid/Sedan
- Civic X Coupé/Hatchback/Sedan
- CR-V
- Fit
- HR-V
- Insight
- NSX
- Odyssey
- Passport

HYUNDAI

New models have been created and the related diagnosis has been added:

- Ioniq 5 [21>]
- Kona/Kauai N [21>]
- Sonata VIII/ Hybrid [20>]



CAR 75.0.0



A new diagnosis of the "BODY COMPUTER" system has been developed for the models:

- Sonata VIII/Hybrid

A new diagnosis of the "AUTOMATIC TRANSMISSION" system has been developed for the models:

- Accent VI
- Elantra Sedan
- Kona
- Santa Fe
- Sonata VIII Hybrid
- Tucson Hybrid
- Tucson Plug-In Hybrid
- Venue

A new diagnosis of the "ELECTRIC MOTOR CONTROL UNIT" system has been developed for the models:

- Santa Fe Hybrid
- Santa Fe Plug-in Hybrid
- Sonata VIII Hybrid
- Tucson Hybrid
- Tucson Plug-In Hybrid

A new diagnosis of the "DC/DC CONVERTER" system has been developed for the models:

- Santa Fe Hybrid
- Santa Fe Plug-in Hybrid
- Sonata VIII Hybrid
- Tucson Hybrid
- Tucson Plug-In Hybrid

A new diagnosis of the "FUEL CELL" system has been developed for the models:

- Tucson
- Nexo



CAR 75.0.0



A new diagnosis of the "GEAR SELECTOR LEVER" system has been developed for the models:

- Azera
- Santa Fe/Hybrid/Plug-In Hybrid
- Sonata VIII
- Sonata VIII Hybrid
- Tucson
- Tucson Hybrid
- Tucson Plug-In Hybrid

A new diagnosis of the "MULTIFUNCTION CAMERA" system has been developed for the models:

- Santa Cruz
- Tucson
- Tucson Hybrid
- Tucson Plug-In Hybrid
- Venue
- Veloster

A new diagnosis of the "PARKING AID CAMERAS" system has been developed for the models:

- Santa Fe
- Santa Fe Hybrid
- Santa Fe Plug-in Hybrid

A new diagnosis of the "DRIVER IDENTIFICATION SYSTEM" has been developed for the models:

- Ioniq 5
- Kona/Hybrid/EV/N
- Santa Cruz
- Santa Fe/Hybrid/Plug-in Hybrid
- Sonata VIII/Hybrid
- Tucson/Hybrid/Plug-in Hybrid

INFINITI

A new model has been created and the related diagnosis has been added:



CAR 75.0.0



QX55 Coupé [21>]

A new diagnosis of the "AUTOMATIC TRANSMISSION" system has been developed for the models:

- EX
- FX
- G Sedan/Coupé/Cabrio
- M
- QX50
- QX55 Coupé
- QX56

A new diagnosis of the "MULTI-FUNCTION DISPLAY" system has been developed for the models:

- Q50
- Q60 Coupé
- Q70
- QX50
- QX55 Coupé
- QX60
- QX80

A new diagnosis of the "GATEWAY" system has been developed for the models:

- M
- Q60
- Q70
- QX50
- QX60
- QX80

A new diagnosis of the "FOUR-WHEEL DRIVE" system has been developed for the model:

- QX60

JAGUAR

New diagnostic systems have been developed for the model E-Pace:

- DC/DC CONVERTER
- PETROL INJECTION
- DIESEL INJECTION
- TRANSMISSION CONTROL MODULE
- PHONE/NAVIGATION SYSTEM INTERFACE MODULE
- INTEGRATED STARTER GENERATOR
- CHASSIS MANAGEMENT SYSTEM
- FOUR-WHEEL DRIVE



CAR 75.0.0



New diagnostic systems have been developed for the model F-Pace:

- DC/DC CONVERTER
- DIFFERENTIAL LOCK ELECTRONICS
- TURBOCHARGER MANAGEMENT
- PETROL INJECTION
- DIESEL INJECTION
- PHONE/NAVIGATION SYSTEM INTERFACE MODULE
- INTEGRATED STARTER GENERATOR

New diagnostic systems have been developed for the model I-Pace:

- ELECTRIC MOTOR CONTROL UNIT
- DC/DC CONVERTER
- PHONE/NAVIGATION SYSTEM INTERFACE MODULE
- CHASSIS MANAGEMENT SYSTEM
- DRIVER STATUS MONITORING SYSTEM

New diagnostic systems have been developed for the model XE:

- DC/DC CONVERTER
- DIFFERENTIAL LOCK ELECTRONICS
- PETROL INJECTION
- DIESEL INJECTION
- PHONE/NAVIGATION SYSTEM INTERFACE MODULE
- INTEGRATED STARTER GENERATOR
- DRIVER STATUS MONITORING SYSTEM

New diagnostic systems have been developed for the model XF:

- PETROL INJECTION
- DIESEL INJECTION
- PHONE/NAVIGATION SYSTEM INTERFACE MODULE
- INTEGRATED STARTER GENERATOR

JEEP

A new diagnosis of the "STEERING LOCK" system has been developed for the models:

- Wrangler
- Gladiator

A new diagnosis of the "SUNROOF ECU" system has been developed for the model:

- Wrangler

A new diagnosis of the "CENTRAL CONSOLE CONTROLS" system has been developed for the models:

- Cherokee
- Compass



CAR 75.0.0



A new diagnosis of the "TELEMATIC ON-BOARD MODULE" system has been developed for the models:

- Compass
- Renegade

A new diagnosis of the "ELECTRIC MOTOR 1/2" system has been developed for the models:

- Compass
- Renegade

A new diagnosis of the "OCCUPIED SEAT DETECTION" system has been developed for the models:

- Wrangler
- Gladiator

A new diagnosis of the "AUDIO AMPLIFIER SYSTEM" system has been developed for the models:

- Compass

A new diagnosis of the "BATTERY CHARGING SYSTEM" system has been developed for the models:

- Compass
- Renegade

A new diagnosis of the "BOOT" system has been developed for the models:

- Compass

KIA

New models have been created and the related diagnosis has been added:

- Borrego Facelift [20>]
- K5 [20>]
- K5 Hybrid [21>]

A new diagnosis of the "ABS" system has been developed for the models:

- K5
- Sorento IV



CAR 75.0.0



A new diagnosis of the "BODY COMPUTER" system has been developed for the models:

- Forte
- K5/Hybrid

New diagnostic systems have been developed for the model Sorento IV/Hybrid/ Plug-in Hybrid:

- BODY COMPUTER
- AUTOMATIC TRANSMISSION
- ELECTRIC MOTOR CONTROL UNIT
- A/C
- DC/DC CONVERTER
- GATEWAY
- GEAR SELECTOR LEVER
- TYRE PRESSURE
- POWER STEERING
- PARK ASSIST CAMERA

A new diagnosis of the "AUTOMATIC TRANSMISSION" system has been developed for the models:

- Forte
- Rio
- Sorento IV Hybrid
- Sorento IV Plug-in Hybrid
- Soul

A new diagnosis of the "INTERIOR LIGHT CONTROL UNITS" system has been developed for the models:

- Soul/EV

LAND ROVER

A new diagnosis of the "IMMOBILISER" system has been developed for the model:

- Range Rover III

A new diagnosis of the "CALF REST SUPPORT MODULE" system has been developed for the model:

- Range Rover IV

A new diagnosis of the "CHASSIS MANAGEMENT SYSTEM" has been developed for the models:

- Discovery V
- Range Rover IV
- Range Rover Sport II

New diagnostic systems have been developed for the models Defender 90/ Defender 110:

- DC/DC CONVERTER
- DIFFERENTIAL LOCK ELECTRONICS
- TURBOCHARGER MANAGEMENT
- PETROL INJECTION
- DIESEL INJECTION
- TRANSMISSION CONTROL MODULE
- PHONE/NAVIGATION SYSTEM INTERFACE MODULE
- INTEGRATED STARTER GENERATOR
- CHASSIS MANAGEMENT SYSTEM

New diagnostic systems have been developed for the model Discovery V:

- DIFFERENTIAL LOCK ELECTRONICS
- TURBOCHARGER MANAGEMENT
- PETROL INJECTION
- DIESEL INJECTION
- TRANSMISSION CONTROL MODULE
- PHONE/NAVIGATION SYSTEM INTERFACE MODULE
- INTEGRATED STARTER GENERATOR
- CHASSIS MANAGEMENT SYSTEM
- MULTIMEDIA SYSTEM
- (HANDS-FREE) BOOT OPENING REQUEST SYSTEM

New diagnostic systems have been developed for the model Discovery Sport:

- DC/DC CONVERTER
- PETROL INJECTION
- DIESEL INJECTION
- TRANSMISSION CONTROL MODULE
- PHONE/NAVIGATION SYSTEM INTERFACE MODULE
- INTEGRATED STARTER GENERATOR
- CHASSIS MANAGEMENT SYSTEM
- DRIVER STATUS MONITORING SYSTEM
- FOUR-WHEEL DRIVE

New diagnostic systems have been developed for the model Range Rover Evoque:

- DC/DC CONVERTER
- PETROL INJECTION
- TRANSMISSION CONTROL MODULE
- PHONE/NAVIGATION SYSTEM INTERFACE MODULE
- INTEGRATED STARTER GENERATOR
- CHASSIS MANAGEMENT SYSTEM
- DRIVER STATUS MONITORING SYSTEM
- MULTIMEDIA SYSTEM
- FOUR-WHEEL DRIVE

LEXUS

A new model has been created and the related diagnosis has been added:

- UX 300e [21>]

LINCOLN

A new model has been created and the related diagnosis has been added:

- Nautilus [18>]

New diagnostic systems have been developed for the model Aviator:

- ADAPTIVE CRUISE CONTROL
- AIRBAG
- PARK ASSIST
- APPROACHING VEHICLE SOUND FOR PEDESTRIANS
- RIGHT SIDE OBSTACLE DETECTION CONTROL UNIT

- LEFT SIDE OBSTACLE DETECTION CONTROL UNIT
- AIR CONDITIONING
- DRIVING DYNAMICS CONTROL
- DC/DC CONVERTER
- STEERING COLUMN SWITCH UNIT
- GATEWAY
- GEAR SELECTOR LEVER
- BATTERY CONTROL MODULE
- POWER STEERING
- PARKING AID CAMERAS
- TRUNK

New diagnostic systems have been developed for the model Corsair:

- ADAPTIVE CRUISE CONTROL
- AIRBAG
- PARK ASSIST
- APPROACHING VEHICLE SOUND FOR PEDESTRIANS
- RIGHT SIDE OBSTACLE DETECTION CONTROL UNIT
- LEFT SIDE OBSTACLE DETECTION CONTROL UNIT
- AIR CONDITIONING
- DRIVING DYNAMICS CONTROL
- DC/DC CONVERTER
- STEERING COLUMN SWITCH UNIT
- GATEWAY
- GEAR SELECTOR LEVER
- BATTERY CONTROL MODULE
- POWER STEERING
- PARKING AID CAMERAS
- TRUNK

A new diagnosis of the "BODY COMPUTER" system has been developed for the models:

- MKZ II/Facelift
- Navigator IV/L

MAZDA

A new diagnosis of the "AUTOMATIC TRANSMISSION" system has been developed for the models:

- Mazda 3
- CX-30
- Tribute

A new diagnosis of the "AUDIO AMPLIFIER SYSTEM" system has been developed for the models:

- CX-5



CAR 75.0.0



- CX-8
- CX-9
- Mazda 3
- Mazda 6

MERCEDES-BENZ

A new model has been created and the related diagnosis has been added:

- EQB [21>]

New diagnostic systems have been developed for the model Citan Tourer [21>]:

- COMAND/AUDIO/MBUX
- MULTI-FUNCTION DISPLAY
- STEERING WHEEL ELECTRONICS
- GATEWAY
- UPPER CONTROL PANEL
- INSTRUMENTATION

A new diagnosis of the "ABS" system has been developed for the models:

- Class E
- CLS

A new diagnosis of the "ABS" system has been developed for the models:

- Class E
- CLS

A new diagnosis of the "ACTIVE SOUND DESIGN" system has been developed for the models:

- Class C L/T/Coupé/Cabrio
- GLE/Coupé
- GLS/Maybach

A new diagnosis of the "REAR COMPARTMENT TABLET PC HOUSING" system has been developed for the models:

- Class E L/T
- CLS Coupé
- GLE/Coupé
- GLS/Maybach

A new diagnosis of the "TRAILER CONTROL UNIT" system has been developed for the models:

- Class A / B
- CLA
- GL/GLS



CAR 75.0.0



- GLA
- GLE
- ML/GLE

A new diagnosis of the "DRIVING DYNAMICS CONTROL" system has been developed for the models:

- E / Gclass
- CLS

A new diagnosis of the "DC/DC CONVERTER" system has been developed for the models:

- EQA
- EQC

A new diagnosis of the "FRONT RIGHT/LEFT AND REAR RIGHT/LEFT DAMPER ELECTRONICS" system has been developed for the models:

- GLE/Coupé
- GLS/Maybach

A new diagnosis of the "HEAD-UP DISPLAY" system has been developed for the models:

- E / Gclass
- CLS
- AMG GT

A new diagnosis of the "BATTERY CONTROL MODULE" system has been developed for the models:

- EQA
- EQC

A new diagnosis of the "BATTERY CHARGER CONTROL MODULE" system has been developed for the models:

- EQA
- EQC

A new diagnosis of the "FRONT INTERFACE MODULE" system has been developed for the models:

- Class A / B
- CLA
- EQA
- EQC
- GLA
- GLB
- GLC

A new diagnosis of the "FRONT ELECTRIC MOTOR" system has been developed for the models:

- EQA



CAR 75.0.0



- EQC

A new diagnosis of the "REAR ELECTRIC MOTOR" system has been developed for the models:

- EQC
- GLC

A new diagnosis of the "POWERTRAIN SYSTEM" has been developed for the models:

- Class E T/Cabrio/Coupé
- CLS Coupé
- EQC
- GLC
- GLE/Coupé

A new diagnosis of the "CRUISE SPEED RADAR" system has been developed for the models:

- Class E/L/Cabrio/Coupé
- CLS
- AMG GT Coupé

A new diagnosis of the "PRE-CRASH SYSTEM" has been developed for the model:

- Citan Tourer

A new diagnosis of the "SUSPENSIONS" system has been developed for the models:

- GLE/Coupé
- GLS/Maybach

A new diagnosis of the "ANTI-VIBRATION ENGINE MOUNT" system has been developed for the models:

- AMG GT Coupé/Roadster

A new diagnosis of the "PHONE" system has been developed for the models:

- Class A/Sedan/L Sedan
- Class C L/T/Cabrio/Coupé
- Class E L/T/Cabrio/Coupé
- Class G T L
- Class S L/LL/Cabrio/Coupé/Maybach
- AMG GT Coupé/Roadster
- CL
- CLS Coupé
- EQA



CAR 75.0.0



- EQB
- GLC Coupé/L
- GLE/Coupé
- GLS/Maybach
- SL

A new diagnosis of the "TOUCH CONTROLLER" system has been developed for the models:

- Class E
- CLS
- AMG GT

MITSUBISHI

A new model has been created and the related diagnosis has been added:

- Eclipse Cross PHEV [21>]

NISSAN

A new diagnosis of the "AUTOMATIC TRANSMISSION" system has been developed for the models:

- Altima
- Cube
- Frontier
- Maxima
- Murano
- Versa

A new diagnosis of the "MULTI-FUNCTION DISPLAY" system has been developed. A new diagnosis of the "GATEWAY" system has been developed.

A new diagnosis of the "HANDS FREE" system has been developed for the models:

- Frontier
- Juke

A new diagnosis of the "FRONT CAMERA" system has been developed for the model:

- Juke

A new diagnosis of the "FOUR-WHEEL DRIVE" system has been developed for the models:

- Rogue



CAR 75.0.0



PORSCHE*

New diagnostic systems have been developed for the model Taycan:

- ELECTRIC MOTOR CONTROL UNIT
- OTA (OVER THE AIR) CONTROL UNIT
- HIGH VOLTAGE CONVERTER
- GATEWAY
- HEAD-UP DISPLAY
- SOUND SYSTEM

New diagnostic systems have been developed for the model 911:

- GATEWAY
- SOUND SYSTEM

A new diagnosis of the "SUNROOF ECU" system has been developed for the models:

- 718 Boxster
- Boxster

A new diagnosis of the "BATTERY CONTROL MODULE" system has been developed for the models:

- Cayenne
- Panamera

A new diagnosis of the "BATTERY CHARGER CONTROL MODULE" system has been developed for the models:

- Cayenne
- Panamera

A new diagnosis of the "NIGHT VISION SYSTEM" has been developed for the models:

- 911
- Cayenne
- Panamera
- Taycan

(*)Visible under the category "CAR - Automobiles" for customers who are not subscribed to SUPERCAR.

SUBARU

New diagnostic systems have been developed for the model Forester:

- HYBRID BATTERY
- REMOTE CONTROL MANAGEMENT
- IMMOBILISER
- MEMORY SEAT MODULE

- HYBRID SYSTEM
- DRIVER STATUS MONITORING SYSTEM
- ELECTRIC DRIVE

New diagnostic systems have been developed for the model Impreza:

- HYBRID BATTERY
- GATEWAY
- REMOTE CONTROL MANAGEMENT
- IMMOBILISER
- MEMORY SEAT MODULE
- HYBRID SYSTEM
- ELECTRIC DRIVE

New diagnostic systems have been developed for the model Legacy:

- VEHICLE CONNECTION CONTROL UNIT
- A/C
- GATEWAY
- REMOTE CONTROL MANAGEMENT
- HEAD-UP DISPLAY
- IMMOBILISER
- GEAR SELECTOR LEVER
- FRONT CORNER RADAR 1
- FRONT CORNER RADAR 2
- STEERING ANGLE SENSOR
- KEYLESS GO SYSTEM
- DRIVER STATUS MONITORING SYSTEM
- REARVIEW MIRRORS



CAR 75.0.0



New diagnostic systems have been developed for the model Outback:

- VEHICLE CONNECTION CONTROL UNIT
- A/C
- GATEWAY
- REMOTE CONTROL MANAGEMENT
- HEAD-UP DISPLAY
- IMMOBILISER
- GEAR SELECTOR LEVER
- FRONT CORNER RADAR 1
- FRONT CORNER RADAR 2
- STEERING ANGLE SENSOR
- KEYLESS GO SYSTEM
- DRIVER STATUS MONITORING SYSTEM
- REARVIEW MIRRORS

New diagnostic systems have been developed for the model XV Crosstrek:

- HYBRID BATTERY
- GATEWAY
- REMOTE CONTROL MANAGEMENT
- IMMOBILISER
- MEMORY SEAT MODULE
- HYBRID SYSTEM
- SERVICE WARNING LIGHT
- ELECTRIC DRIVE

TOYOTA

New models have been created and the related diagnosis has been added:

- C-HR EV [20>]
- Mirai [21>]

VOLKSWAGEN

New models have been created and the related diagnosis has been added:

- Arteon Shooting Brake [20>]
- ID.4 [21>]

A new diagnosis of the "BATTERY CONTROL MODULE" system has been developed for the model:

- Touareg

A new diagnosis of the "APPLICATION SERVER 1 SYSTEM 2 JAVA" system has been developed for the models:

- ID. 3

- ID. 4

A new diagnosis of the "REAR-VIEW CAMERA" system has been developed for the models:

- ID. 3

- ID. 4

New wiring diagrams have been developed for the model Golf VIII:

- MULTIFUNCTION CAMERA
- POWER STEERING
- AIRBAG
- AIR CONDITIONING
- 1.0 / 1.4 / 1.5 / 2.0PETROL INJECTION
- 2.0DIESEL INJECTION
- 1.5CNG INJECTION
- FOUR-WHEEL DRIVE

New wiring diagrams have been developed for the model Passat B8:

- PARK ASSIST
- POWER STEERING
- FOUR-WHEEL DRIVE
- AIRBAG
- 6-speed AUTOMATIC TRANSMISSION
- 7-speed AUTOMATIC TRANSMISSION
- ABS
- 1.4 / 1.8 / 2.0PETROL INJECTION
- 1.6 / 2.0DIESEL INJECTION

New wiring diagrams have been developed for the model Passat NMS:

- PARK ASSIST
- TYRE PRESSURE
- POWER STEERING
- AIRBAG
- ABS
- 2.0PETROL INJECTION

SUPERCAR

BENTLEY

A new diagnostic system has been developed for the model Flying Spur [20>]:

- PETROL INJECTION

A new diagnosis of the "FRONT DOORS" system has been developed for the models:

- Dawn
- Wraith

A new diagnosis of the "REAR DOORS" system has been developed for the model:

- Ghost

New wiring diagrams have been developed for the model Continental GT:

- PETROL INJECTION
- ABS
- AIRBAG
- AUTOMATIC TRANSMISSION
- AIR CONDITIONING
- PARKING BRAKE
- NAVIGATOR
- TYRE PRESSURE
- PARK ASSIST

FERRARI

A new diagnosis of the "ANTI-THEFT" system has been developed for the model:

- California T

A new diagnosis of the "MULTI-FUNCTION DISPLAY" system has been developed for the models:

- California T
- FF



CAR 75.0.0



A new diagnosis of the "CAN LINE" system has been developed for the models:

- 488 Pista/Spider/GTB/Pista Spider
- FF

A new diagnosis of the "PHONE/NAVIGATION SYSTEM INTERFACE MODULE" system has been developed for the models:

- California T
- FF

A new diagnosis of the "DRIVER/PASSENGER SIDE SEAT ADJUSTMENT" system has been developed for the models:

- 458 Italia/Spider
- 488 GTB/Spider
- California/30/T
- F12 Berlinetta
- F12tdf

A new diagnosis of the "AUDIO AMPLIFIER SYSTEM" system has been developed for the models:

- 488 Pista/Spider/GTB/Pista Spider
- California/30/T
- F12 Berlinetta
- F12tdf

A new diagnosis of the "TRUNK" system has been developed for the model:

- GTC4Lusso

New diagnostic systems have been developed for the model 812 Superfast:

- PARK ASSIST
- AIR CONDITIONING
- CONTROLS ON DRIVER'S SIDE
- MULTIMEDIA CONTROLLER
- MULTI-FUNCTION DISPLAY
- INFOTAINMENT INTERFACE
- ION-IONISER UNIT
- RADAR
- POWER STEERING
- AUDIO AMPLIFIER SYSTEM
- INSTRUMENTATION
- FRONT CAMERA
- PARKING AID CAMERAS



CAR 75.0.0



New diagnostic systems have been developed for the model F8 Tributo:

- PARK ASSIST
- AIR CONDITIONING
- CONTROLS ON DRIVER'S SIDE
- MULTIMEDIA CONTROLLER
- INFOTAINMENT INTERFACE
- RADAR
- AUDIO AMPLIFIER SYSTEM
- FRONT CAMERA
- PARKING AID CAMERAS

New diagnostic systems have been developed for the model GTC4Lusso/T:

- PARK ASSIST
- AIR CONDITIONING
- CONTROLS ON DRIVER'S SIDE
- MULTIMEDIA CONTROLLER
- MULTI-FUNCTION DISPLAY
- INFOTAINMENT INTERFACE
- ION-IONISER UNIT
- RADAR
- AUDIO AMPLIFIER SYSTEM
- FRONT CAMERA
- PARKING AID CAMERAS

New diagnostic systems have been developed for the model Monza SP.

- PARK ASSIST
- AIR CONDITIONING
- CONTROLS ON DRIVER'S SIDE
- MULTIMEDIA CONTROLLER
- INFOTAINMENT INTERFACE
- ION-IONISER UNIT
- POWER STEERING
- INSTRUMENTATION

New diagnostic systems have been developed for the model Portofino:

- PARK ASSIST
- CONTROLS ON DRIVER'S SIDE
- MULTIMEDIA CONTROLLER
- INFOTAINMENT INTERFACE
- RADAR
- POWER STEERING
- AUDIO AMPLIFIER SYSTEM





CAR 75.0.0



- FRONT CAMERA
- PARKING AID CAMERAS

New diagnostic systems have been developed for the model SF90 Stradale:

- PARK ASSIST
- MULTI-FUNCTION DISPLAY
- INFOTAINMENT INTERFACE
- RADAR
- POWER STEERING
- AUDIO AMPLIFIER SYSTEM
- FRONT CAMERA
- PARKING AID CAMERAS

FORD

A new diagnosis of the "BODY COMPUTER" system has been developed for the model:

- GT

LAMBORGHINI

A new model has been created and the related diagnosis has been added:

- Huracan [21>] STO

MASERATI

A new diagnosis of the "PETROL INJECTION" system has been developed for the model:

- Levante 3.0i V6 Biturbo

A new "DIESEL INJECTION - 3.0 V6" wiring diagram has been developed for the models: Ghibli/Quattroporte Diesel

A new "PETROL INJECTION - 3.0i V6 Biturbo" wiring diagram has been developed for the models: Ghibli Diesel/S/S Q4

A new "TYRE PRESSURE" wiring diagram has been developed for the models:

- Ghibli/Diesel/S/S Q4
- Quattroporte/Diesel/GTS/S/S Q4/Hybrid/Trofeo

New wiring diagrams have been developed for the systems:

- PARK ASSIST
- SUSPENSIONS
- AUTOMATIC TRANSMISSION
- PARKING BRAKE
- AIRBAG
- ABS



CAR 75.0.0



For the models:

- Ghibli Diesel/S/S Q4/Hybrid/Trofeo

PORSCHE

New diagnostic systems have been developed for the model Taycan:

- ELECTRIC MOTOR CONTROL UNIT
- OTA (OVER THE AIR) CONTROL UNIT
- HIGH VOLTAGE CONVERTER
- GATEWAY
- HEAD-UP DISPLAY
- SOUND SYSTEM

New diagnostic systems have been developed for the model 911:

- GATEWAY
- SOUND SYSTEM

A new diagnosis of the "SUNROOF ECU" system has been developed for the models:

- 718 Boxster
- Boxster

A new diagnosis of the "BATTERY CONTROL MODULE" system has been developed for the models:

- Cayenne
- Panamera

A new diagnosis of the "BATTERY CHARGER CONTROL MODULE" system has been developed for the models:

- Cayenne
- Panamera

A new diagnosis of the "NIGHT VISION SYSTEM" has been developed for the models:

- 911
- Cayenne
- Panamera
- Taycan