

**IDC5**  
SOFTWARE  
UPDATE

# TRUCK 51.0.0



March 2021

# IDC5 TRUCK 51.0.0

The new diagnostic features included in the **IDC5 TRUCK 51.0.0** update, which also contains the continuous updates 50.1.0 / 50.2.0 / 50.3.0 / 50.4.0 / 50.5.0 / 50.6.0 / 50.7.0, allow working on a large number of vehicles that belong to makes of the most popular manufacturers.

The work TEXA's developers carried out on **industrial vehicles**, **light commercial vehicles** and **buses**, but also on **trailers** and **semi-trailers**, **powertrain**, **small utility truck**, guarantees all mechanics the opportunity to use diagnostic tools that are always updated and state-of-the-art, to operate successfully on the vast majority of the vehicles on the road.

## MAIN NEW FEATURES INCLUDED IN THIS VERSION

- ***TGS3s Dashboards***
- ***Logical groups in the adjustments page***
- ***Specific button for the external tools***
- ***“Operator entry” function***
- ***SMART mode***
- ***myTEXA - Diagnostic Reports service***

To learn more about the extraordinary coverage made available by TEXA, visit the website:  
**[www.texausa.com/coverage](http://www.texausa.com/coverage)**

IDC5 TRUCK 51.0.0 contains new possible selections for the major makes worldwide, among which:

**CHEVROLET, CUMMINS Engine, DETROIT Engine, FORD, FREIGHTLINER, GMC, HINO, INTERNATIONAL, ISUZU (North America), KENWORTH, KNORR – BREMSE, MACK, MERCEDES-BENZ, MITSUBISHI FUSO, PETERBILT, UD TRUCKS (NISSAN DIESEL), VOLVO BUS, VOLVO TRUCK, WABCO, ZF TRANSMISSION.**

## Software

TGS3s Dashboards

Logical groups in the adjustments page

Specific button for the external tools

“Operator entry” function

SMART mode

myTEXA - Diagnostic Reports service

## Diagnosis

NORTH AMERICAN Market

TRUCK

BUS & COACH

LIGHT COMMERCIAL VEHICLES

## Wiring Diagrams

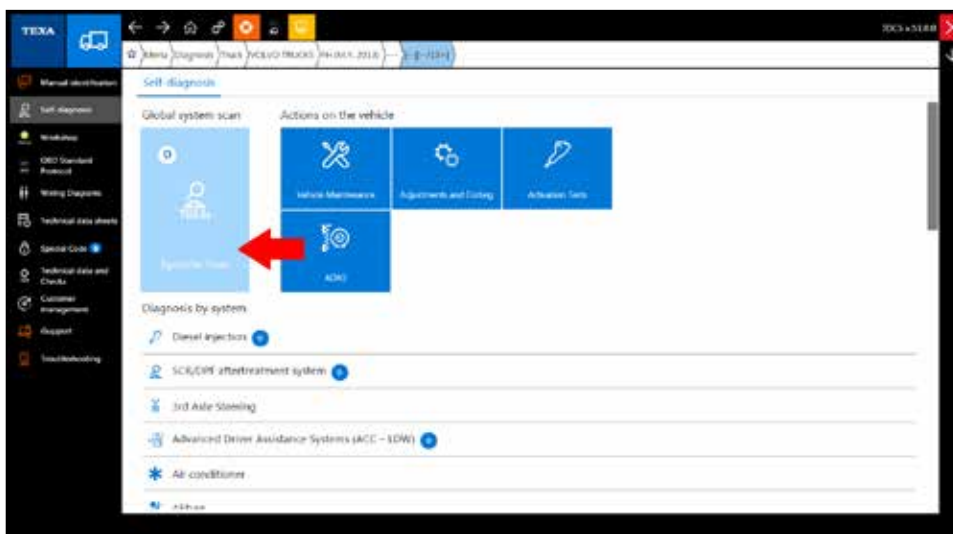
## Dashboard

## Coverage

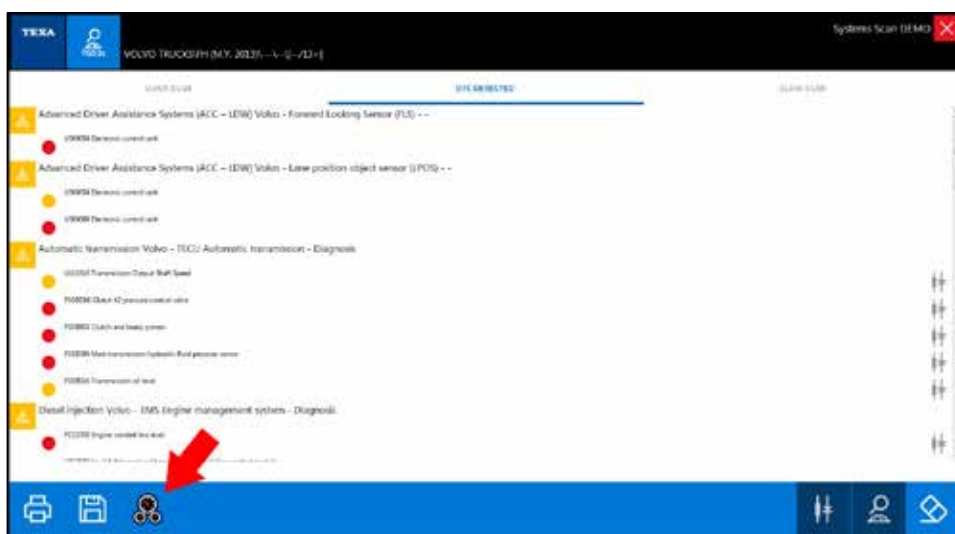
# Software

## TGS3s Dashboards

Starting from the TRUCK version 51, two new types of dashboards have been implemented: the first indicates how the control units are connected with each other, while the second indicates their position in the vehicle. They can be viewed from the TGS3s system scan and allow launching the Diagnosis directly by selecting the systems that show any errors.



Select the TGS3s



DASHBOARD icon

## Software

### TGS3s Dashboards

Logical groups in the adjustments page

Specific button for the external tools

“Operator entry” function

SMART mode

myTEXA - Diagnostic Reports service

## Diagnosis

NORTH AMERICAN Market

TRUCK

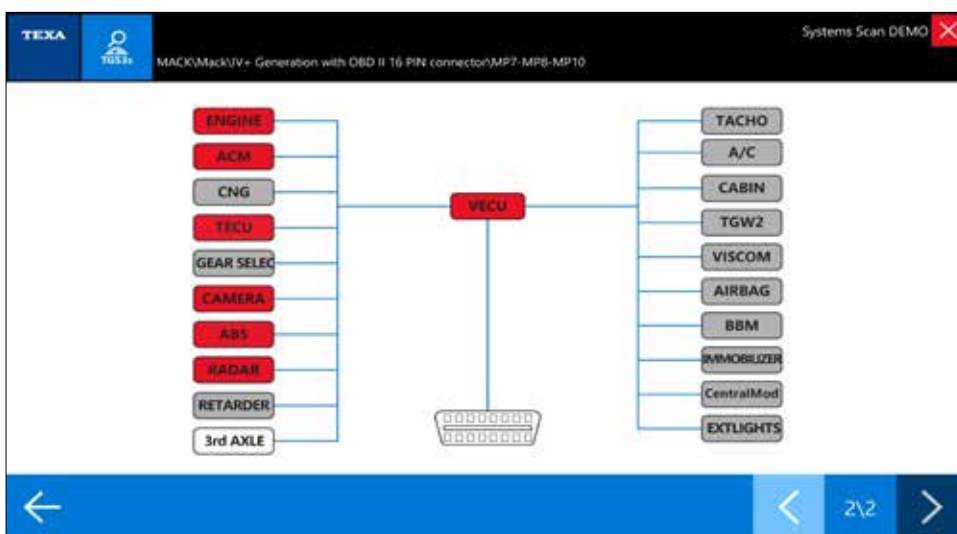
BUS & COACH

LIGHT COMMERCIAL VEHICLES

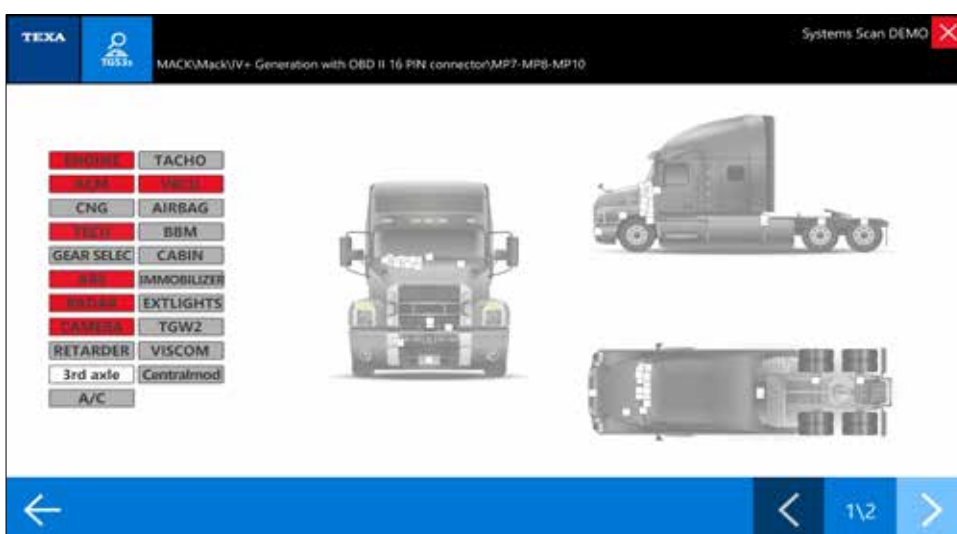
## Wiring Diagrams

## Dashboard

## Coverage



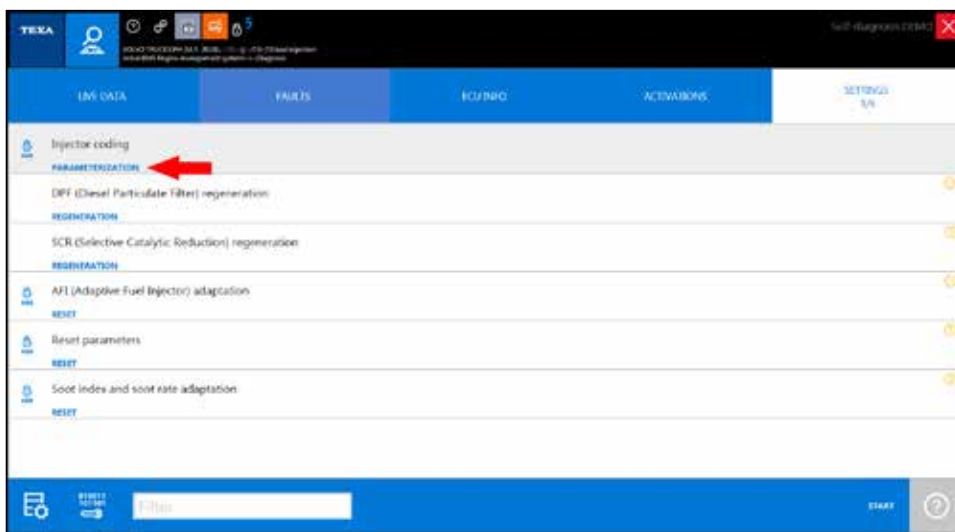
Indication in red of the control units with errors and Diagnosis



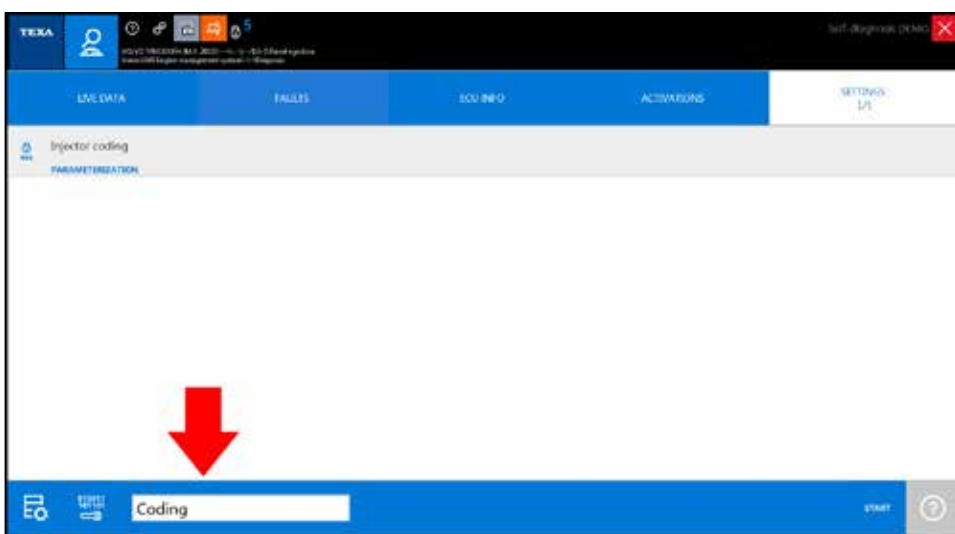
Indication in red of the control units with errors, Diagnosis and position of the control unit

## Logical groups in the adjustments page

Starting from the TRUCK version 51, the adjustments available in the SelfDiagnosis menu have been categorised. Now it is also possible to search for an adjustment using the search bar.



Category of the adjustment



Search bar for the adjustment



## Specific button for the external tools

Starting from the TRUCK version 51, a new button has been implemented in the adjustments page, in the Self-Diagnosis menu, which allows selecting the external tool.

### Software

TGS3s Dashboards

Logical groups in the adjustments page

Specific button for the external tools

“Operator entry” function

SMART mode

myTEXA - Diagnostic Reports service

### Diagnosis

NORTH AMERICAN Market

TRUCK

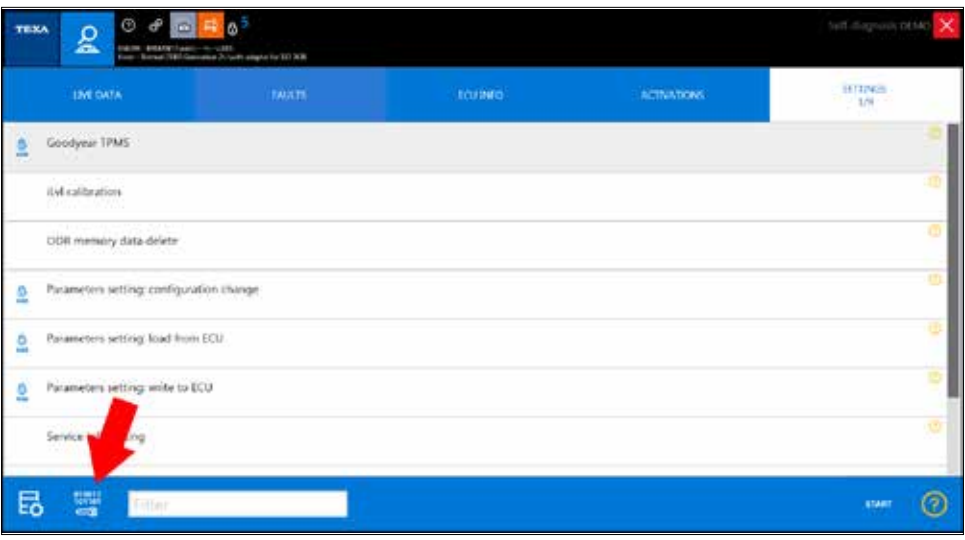
BUS & COACH

LIGHT COMMERCIAL VEHICLES

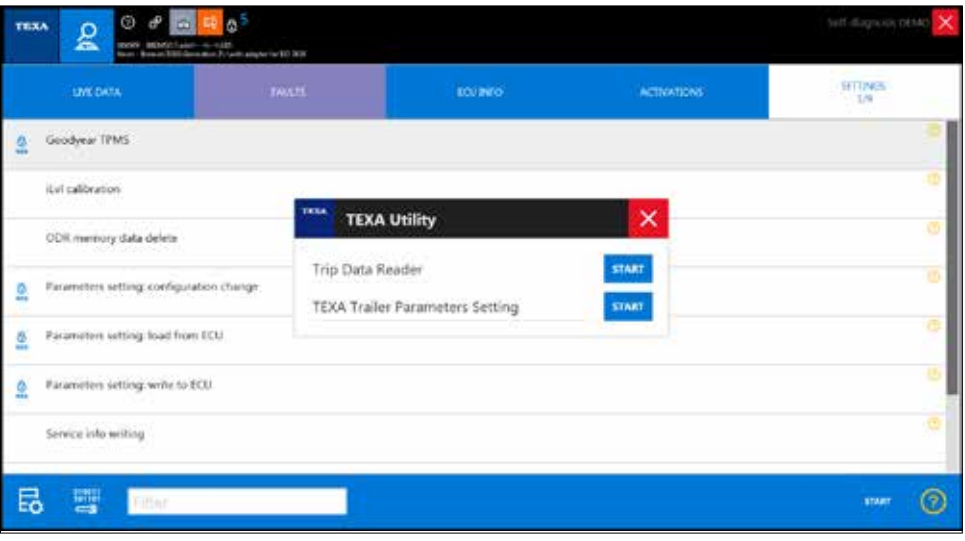
### Wiring Diagrams

### Dashboard

### Coverage



Tool button

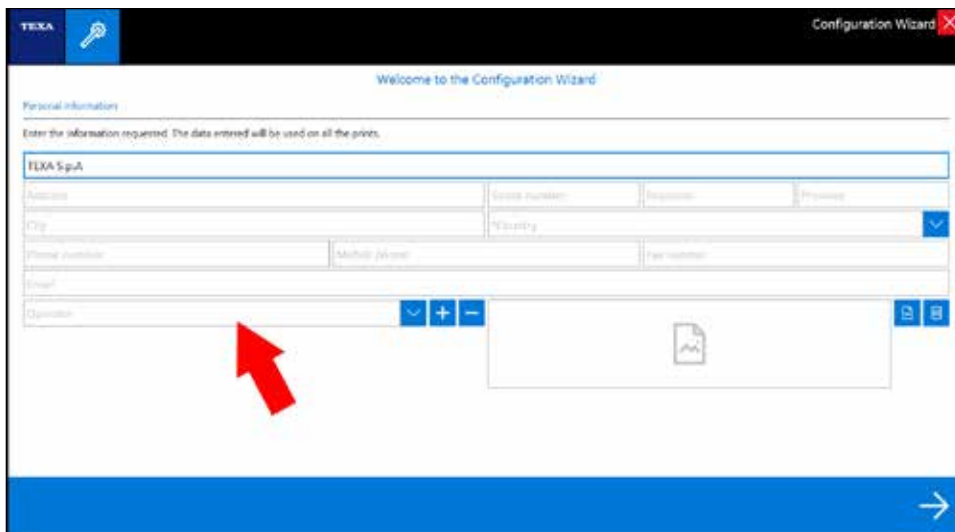


Tool button

## “Operator entry” function

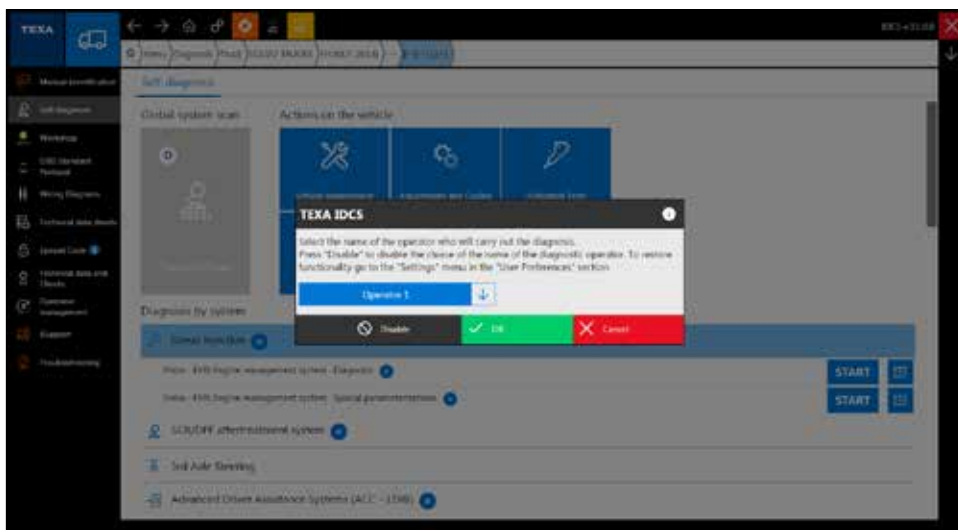
Starting from the TRUCK version 51, a new function called “operator entry” has been implemented. This new function allows configuring the IDC5 software with various diagnostic technicians and collecting the data separately for each operator.

The collected data can be viewed by customers in the “Diagnostic Reports” section in their “myTEXA” web page. To enable the “operator entry” function, simply enter the diagnostic technician’s name in the tool configuration screen.



**Tool configuration screen**

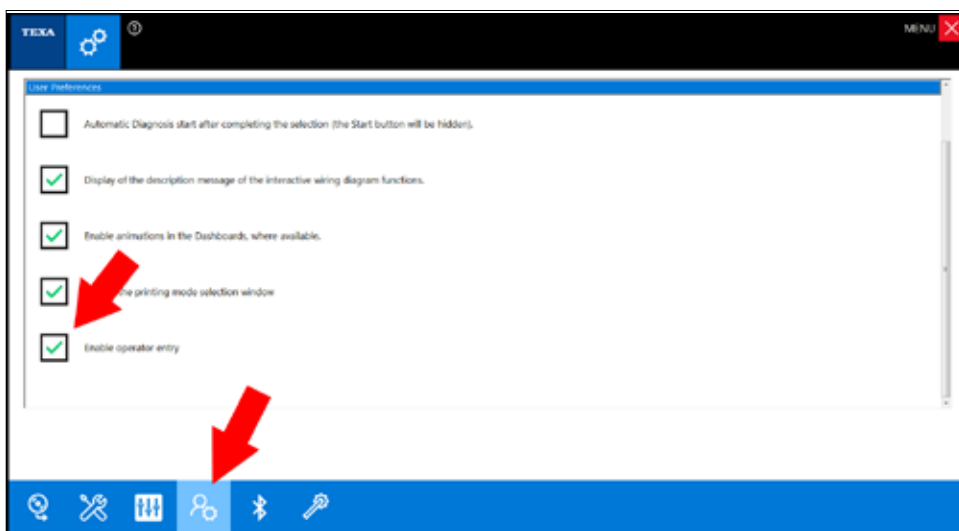
The “+” and “-” buttons allow you to add or remove the diagnostic operators. When carrying out a Diagnosis, the software will request you to select the operator’s name.



**Operator selection during the Diagnosis**



This function can always be deactivated/activated by clicking on the “Disable” button when carrying out the Diagnosis, or from the “Tools-User Preferences” menu.

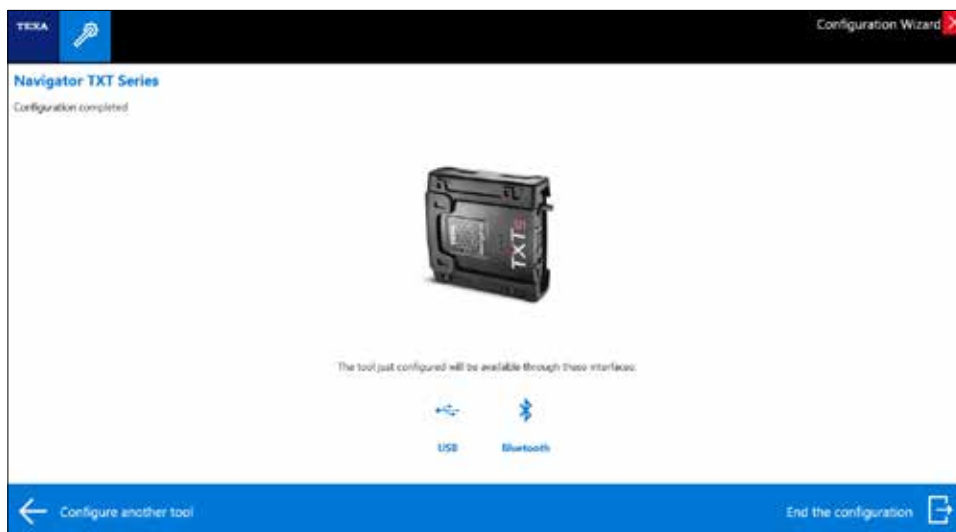


**Disabling from “Tools-User Preferences”**

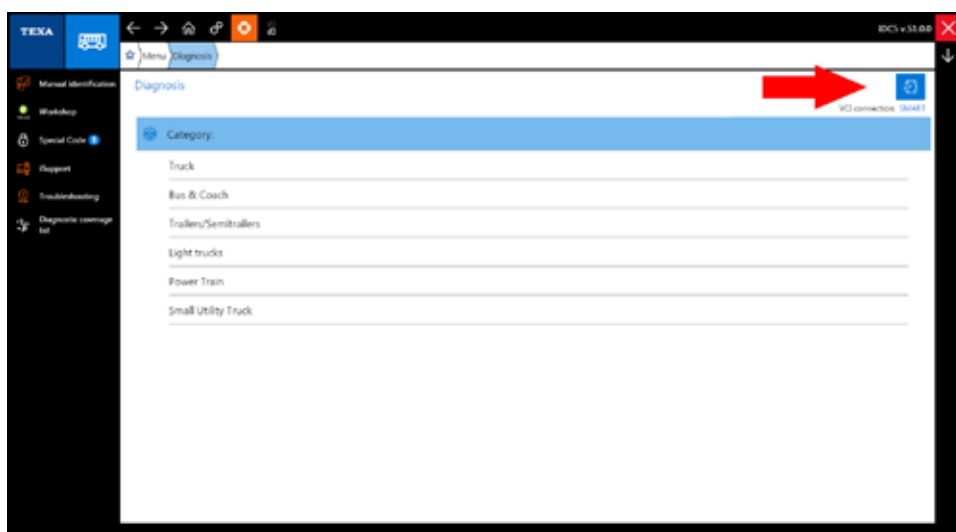
<b>Software</b>
TGS3s Dashboards
Logical groups in the adjustments page
Specific button for the external tools
<b>“Operator entry” function</b>
SMART mode
myTEXA - Diagnostic Reports service
<b>Diagnosis</b>
NORTH AMERICAN Market
TRUCK
BUS & COACH
LIGHT COMMERCIAL VEHICLES
<b>Wiring Diagrams</b>
<b>Dashboard</b>
<b>Coverage</b>

## SMART mode

Starting from the TRUCK version 51, a new tool association interface and communication channel selection has been implemented, called "SMART mode".



New tool configuration interface



Icon to change connection mode



## Software

TGS3s Dashboards

Logical groups in the adjustments page

Specific button for the external tools

“Operator entry” function

### SMART mode

myTEXA - Diagnostic Reports service

## Diagnosis

NORTH AMERICAN Market

TRUCK

BUS & COACH

LIGHT COMMERCIAL VEHICLES

## Wiring Diagrams

## Dashboard

## Coverage



**SMART mode**



**Manual mode**

## myTEXA - Diagnostic Reports service

Inside the portal dedicated to workshops, myTEXA, there is a new section called "Diagnostic Reports" which allows customers to access a series of useful information about the diagnoses carried out by the different diagnostic tools (e.g.: scans grouped by make or adjustments by system).

**Filter settings**

Select the environments: TRUCK  
 Select Serial: 828F0FAT,08081EDC,58811D48  
 From date: 23/01/2021  
 To date: 22/02/2021  
 FILTER

**Periodic report scheduling**

E-Mail: truck.dhw@texa.com  
 Document format: Excel  
 How often (gg): 1  
 SAVE DELETE

**General report of the diagnostic sessions**

Dashboard Table

Date	Diagnostic sessions	Active errors
26/01/2021	1	0
26/01/2021	8	15
27/01/2021	22	8
28/01/2021	13	11
03/02/2021	8	9
04/02/2021	10	11
05/02/2021	4	0

**Diagnostic sessions per system**

Engine Manufacturer: Tractors

Engine Manufacturer	Diagnosis with active errors	Diagnosis with stored errors	Diagnosis without errors
MERCEDES-BENZ	2	22	78
IVECO	7	35	57
SCANIA	1	17	18
MANITEX	0	5	5
FIAT 0.0 MJ	0	4	4
FIAT 0.0 CNG 16V	0	3	3

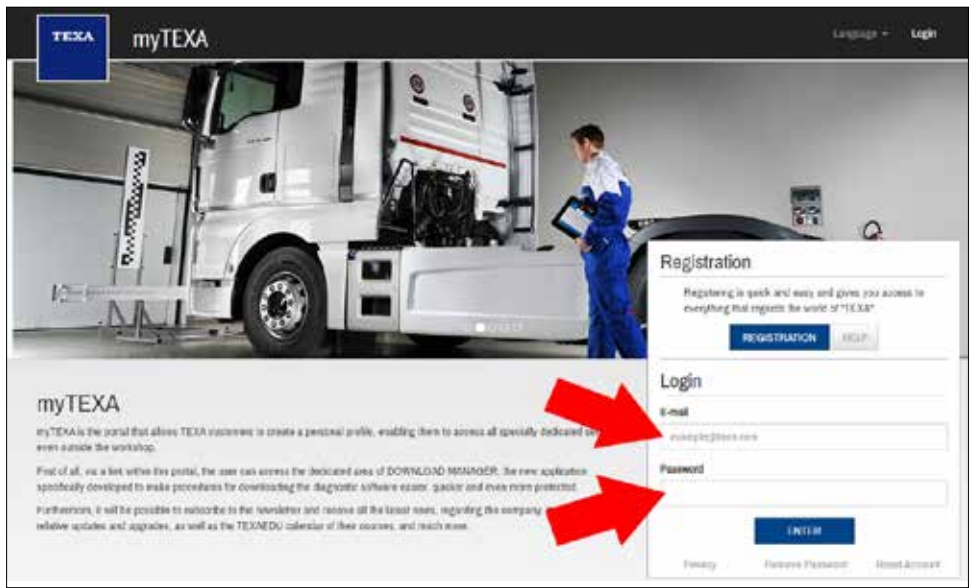
**DTCs detected per system**

Engine Manufacturer: Tractors  
 Active errors Stored errors

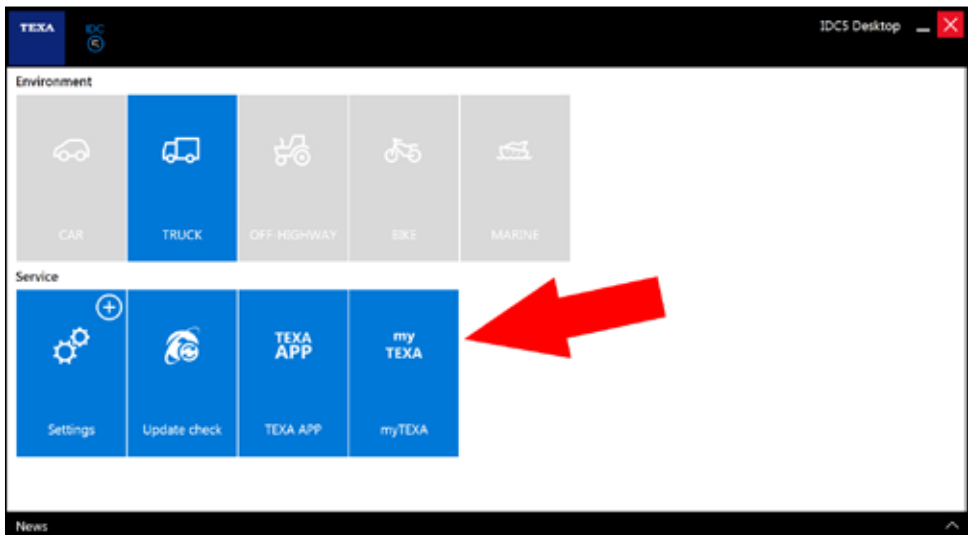
Description	Total errors	Selection
Unknown error	8	IVECO
Control unit internal error	3	IVECO
Door unlock relay	3	FIAT 0.0 CNG 16V
Door lock relay	3	FIAT 0.0 CNG 16V
Initialisation failure	2	FIAT 0.0 MJ
Wrong calibrations or ECU	2	FIAT 0.0 MJ

Showing 1 to 6 of 15 rows

It is possible to access the myTEXA portal from the website <https://mytexa.com/>, inserting the login credentials (user and password), or from the diagnostic tool, through the IDC5 software.

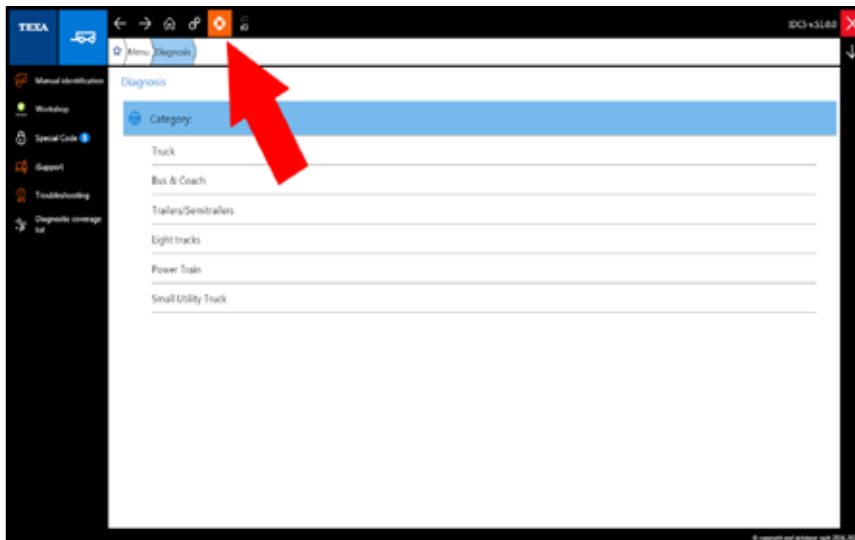


myTEXA portal



Connection to myTEXA portal from IDC5 home page

- Software**
- TGS3s Dashboards
- Logical groups in the adjustments page
- Specific button for the external tools
- “Operator entry” function
- SMART mode
- myTEXA - Diagnostic Reports service**
- Diagnosis**
- NORTH AMERICAN Market
- TRUCK
- BUS & COACH
- LIGHT COMMERCIAL VEHICLES
- Wiring Diagrams**
- Dashboard**
- Coverage**

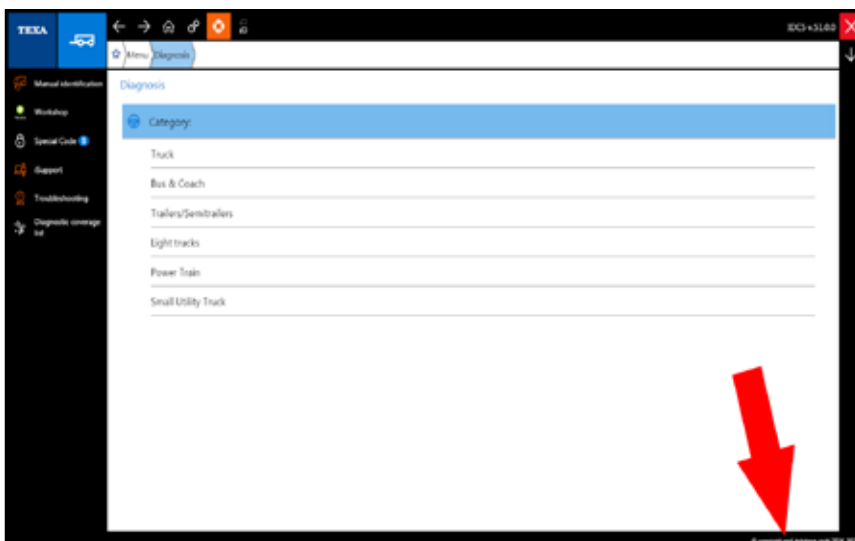


**Connection to myTEXA portal from IDC5 Diagnosis**

In order to access the portal, you need to have a myTEXA account.

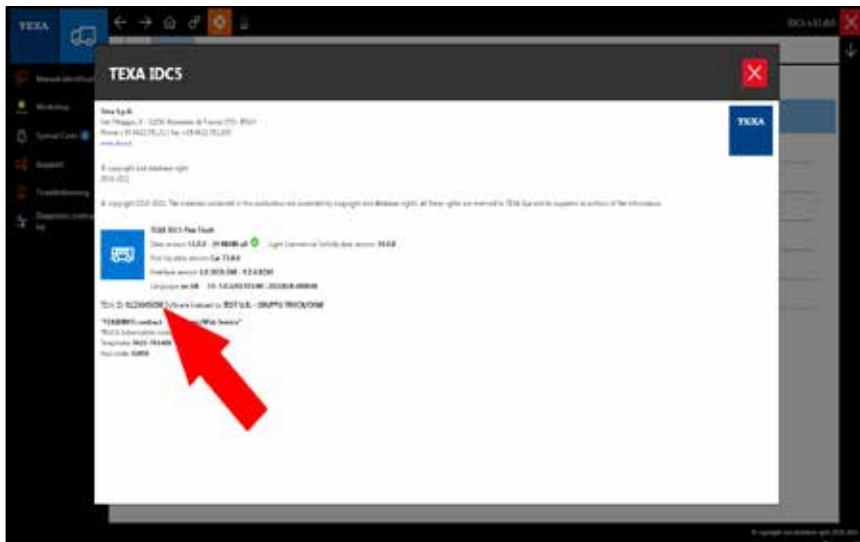
If necessary, you will have to sign up on the portal to obtain the LOGIN data. To sign up, you need to enter the serial number of a TEXA tool and also your TEXA ID.

To obtain the TEXA ID you need to contact your retailer or retrieve it directly from the IDC5 software.



**IDC5 "Vehicle selection" screen**





**IDC5 “Copyright and database rights” screen**

The new “Diagnostic Reports” service allows you to access a series of configurable dashboards available in graphic or table format.

Customers can view the data directly through the dashboards, or create a periodic report, containing all the data summarised in the dashboard, which they can automatically send to a specified e-mail address.

## Software

TGS3s Dashboards

Logical groups in the adjustments page

Specific button for the external tools

“Operator entry” function

SMART mode

**myTEXA - Diagnostic Reports service**

## Diagnosis

NORTH AMERICAN Market

TRUCK

BUS & COACH

LIGHT COMMERCIAL VEHICLES

## Wiring Diagrams

## Dashboard

## Coverage

# Diagnosis

## TRUCK

### **CUMMINS Engine**

- The Diesel Injection system "Cummins J1939 Core 1" has been updated.
- The Diesel Injection system "Cummins J1939 Core 2" has been updated.
- The CNG Injection system "Cummins CNG" has been updated.

### **FREIGHTLINER**

- The ADAS "VRDU Driving assistance system" has been updated for the model Detroit Diesel - Mercedes Benz.
- The ADAS "(MPC) Multi-Purpose Camera" has been updated for the model Detroit Diesel - Mercedes Benz.
- The climate control system "(HVAC) Heating, Ventilation and A/C" has been updated for the model Detroit Diesel - Mercedes Benz.
- The Body Computer system "(BHM) Bulkhead Module" has been updated for the model Detroit Diesel - Mercedes Benz.

### **GMC**

- The new models W Series 6.0 Gasoline [2017], [2018] and [2019] have been developed with the following systems:
  - ABS;
  - Automatic transmission;
  - Petrol Injection;
  - Powertrain System.

### **HINO**

- The diesel Injection system "Denso Common Rail EPA 07/10/13 CAN Line" has been updated in the following models:
  - Class 4 (Series 300);
  - Class 5 (Series 300);
  - Class 6 (Series 600);
  - Class 7 (Series 600).

### **INTERNATIONAL**

- The ABS systems "Wabco D / E" and "Wabco Wheel anti-lock system (HPB)" have been updated for the models:

- Caterpillar;
- Cummins;
- Detroit Diesel - Mercedes Benz;
- International;
- MWM.

- The Diesel Injection system "Navistar-MaxxForce" has been updated for the models:
  - CF 600;
  - International;
  - MWM.

### **ISUZU (North America)**

- The new models N Series 6.0 Gasoline [2017], [2018] and [2019] have been developed with the following systems:
  - ABS;
  - Automatic transmission;
  - Petrol Injection;
  - Powertrain System.

### **KENWORTH**

- The diesel Injection system "Delphi PCI System EPA 10/13" has been updated.
- The SCR/DPF after-treatment system "EAS 4 EPA 13" has been updated.
- The adjustment "Reset MIL (manual procedure)" has been developed for the following systems:
  - "ECS-DC4 EPA 04/07";
  - "ECS-DC5 EPA 10/13";
  - "ECS-DC6 EPA 13".

### **MACK**

- The adjustment "SCR (Selective Catalytic Reduction) inducement reset" has been developed for the SCR/DPF after-treatment system "ACM Exhaust gas after-treatment".
- The Diesel Injection system "Engine control unit" has been updated for the model Mack III Generation with DEUTSCH 9 PIN connector.





- All the diagnostic systems in the model Mack IV+ Generation with OBD II 16 PIN connector have been updated.

## **mitsubishi fuso**

- The ADAS “RDF Front radar sensor” has been updated for the models:
- 4P10 EPA 04/07;
- 4P10 EPA 10/13.

## **PETERBILT**

- The diesel Injection system “Delphi PCI System EPA 10/13” has been updated.
- The SCR/DPF after-treatment system “EAS 4 EPA 13” has been updated.
- The adjustment “Reset MIL (manual procedure)” has been developed for the following systems:
  - “ECS-DC4 EPA 04/07”;
  - “ECS-DC5 EPA 10/13”;
  - “ECS-DC6 EPA 13”.

## **UD TRUCKS (NISSAN DIESEL)**

- The cabin control system “CIOM Cab I/O Module Special parameterisations” has been developed for the models:
  - Heavy Duty M.Y. 2018;
  - Medium Duty M.Y. 2018.
- The Middle Frame Computer system “CCIOM Central Chassis I/O Module Special parameterisations” has been developed for the models:
  - Heavy Duty M.Y. 2018;
  - Medium Duty M.Y. 2018.

## **VOLVO TRUCK**

- The adjustment “SCR (Selective Catalytic Reduction) inducement reset” has been developed for the SCR/DPF after-treatment system “ACM Exhaust gas after-treatment”.
- All the diagnostic systems in the model Volvo Vehicles with OBD II 16 PIN connector have been updated.

## Software

TGS3s Dashboards

Logical groups in the adjustments page

Specific button for the external tools

“Operator entry” function

SMART mode

myTEXA - Diagnostic Reports service

## Diagnosis

**NORTH AMERICAN Market**

**TRUCK**

**BUS & COACH**

**LIGHT COMMERCIAL VEHICLES**

## Wiring Diagrams

## Dashboard

## Coverage

**BUS & COACH****CUMMINS Engine**

- The Diesel Injection system “Cummins J1939 Core 1” has been updated.
- The Diesel Injection system “Cummins J1939 Core 2” has been updated.
- The CNG Injection system “Cummins CNG” has been updated.

**PREVOST**

- The new model H Series has been developed with the following systems:

- ABS;
- Advanced Driver Assistance Systems (ACC – LDW);
- Airbag;
- Chassis equipment and design;
- Automatic transmission;
- Exterior light control unit;
- A/C system;
- Passenger compartment control;
- Gateway;
- Immobiliser;
- CNG Injection;
- Diesel Injection;
- Fault reading from instrument panel;
- Telematic on-board module
- Motor vehicle control;
- Retarder;
- SCR/DPF aftertreatment system;
- Service warning light;
- Instrumentation;
- Tachograph;
- Trip Data Recorder.

- The new model Volvo 9700 has been developed with the following systems:

- ABS;
- Airbag;
- Radio;
- Automatic transmission;
- Exterior light control unit;
- Multifunction display;
- EBS;
- Steering electronics;
- Immobiliser;
- Diesel Injection;
- Tire pressure;

- Motor vehicle control;
- Retarder;
- Chassis management system;
- SCR/DPF aftertreatment system;
- Suspensions;
- Instrumentation;
- Trip Data Recorder.

- The new model X Series has been developed with the following systems:

- ABS;
- Advanced Driver Assistance Systems (ACC – LDW);
- Airbag;
- Chassis equipment and design;
- Automatic transmission;
- Exterior light control unit;
- A/C system;
- Passenger compartment control;
- Gateway;
- Immobiliser;
- CNG Injection;
- Diesel Injection;
- Fault reading from instrument panel;
- Telematic on-board module
- Motor vehicle control;
- Retarder;
- SCR/DPF aftertreatment system;
- Service warning light;
- Instrumentation;
- Tachograph;
- Trip Data Recorder.

# LIGHT COMMERCIAL VEHICLES

## CHEVROLET

• The new model Silverado [19>] has been developed with the following systems:

- ABS;
- Ignition;
- Airbag;
- Park assist;
- Radio;
- Body computer;
- Automatic transmission;
- A/C system;
- Distance control;
- PTO management;
- Petrol Injection;
- Diesel Injection;
- CD player;
- Central interface module;
- Power steering;
- Audio amplifier system;
- Suspensions;
- Instrumentation;
- Front camera;
- Telematics control unit.

• The “PTO management” system has been updated for the models Silverado [05>13] and Silverado [14>18].

## FORD

• The new model F Series Super Duty Boss 6.2 [2017>2019] has been developed with the following systems:

- ABS;
- Airbag;
- Park assist;
- Radio;
- Body computer;
- Automatic transmission;
- Accessory function control unit;
- Obstacle detection control unit, right side;
- Obstacle detection control unit, left side;
- Trailer control unit;
- Audio control;
- Steering column switch unit;
- Steering electronics;
- Gateway;
- GPS;
- Head-up display;
- Petrol Injection;
- Battery control module;
- Telematic on-board module

<b>Software</b>
TGS3s Dashboards
Logical groups in the adjustments page
Specific button for the external tools
“Operator entry” function
SMART mode
myTEXA - Diagnostic Reports service
<b>Diagnosis</b>
<b>NORTH AMERICAN Market</b>
TRUCK
BUS & COACH
LIGHT COMMERCIAL VEHICLES
<b>Wiring Diagrams</b>
<b>Dashboard</b>
<b>Coverage</b>

- Front interface module;
- Driver side door;
- Passenger side door;
- Driver and passenger side running board;
- Seat air conditioning/heating adjustment;
- Driver's side Multicontour seat adjustment;
- Seat adjustment, driver's side;
- Passenger's side Multicontour seat adjustment;
- Speed control;
- Transfer case;
- Steering angle sensor;
- Power steering;
- Multimedia system;
- Sound system;
- Instrumentation;
- Front camera.

• The new model F Series Super Duty Boss 6.2 [2020>] has been developed with the following systems:

- Automatic transmission;
- Petrol Injection.

• The new model F Series Super Duty Godzilla 7.3 [2020>] has been developed with the following systems:

- Automatic transmission;
- Petrol Injection.

• The new model F Series Super Duty Triton 6.8 [2017>2019] has been developed with the following systems:

- ABS;
- Airbag;
- Park assist;
- Radio;
- Body computer;
- Automatic transmission;
- Accessory function control unit;
- Obstacle detection control unit, right side;
- Obstacle detection control unit, left side;
- Trailer control unit;
- Audio control;
- Steering column switch unit;
- Steering electronics;
- Gateway;
- GPS;
- Head-up display;
- Petrol Injection;
- Battery control module;
- Telematic on-board module
- Front interface module;
- Driver side door;
- Passenger side door;

- Driver and passenger side running board;
- Seat air conditioning/heating adjustment;
- Driver's side Multicontour seat adjustment;
- Seat adjustment, driver's side;
- Passenger's side Multicontour seat adjustment;
- Speed control;
- Transfer case;
- Steering angle sensor;
- Power steering;
- Multimedia system;
- Sound system;
- Instrumentation;
- Front camera.

## **GMC**

• The new model Sierra [19>] has been developed with the following systems:

- ABS;
- Ignition;
- Airbag;
- Park assist;
- Radio;
- Body computer;
- Automatic transmission;
- A/C system;
- Distance control;
- PTO management;
- Petrol Injection;
- Diesel Injection;
- CD player;
- Central interface module;
- Power steering;
- Audio amplifier system;
- Suspensions;
- Instrumentation;
- Front camera;
- Telematics control unit.

## **MERCEDES-BENZ**

• The automatic transmission system "Siemens SID 208 Euro 5" has been developed for the model Sprinter (907/910).

• The "ADAS" and "Instrumentation" systems have been updated for the model Metris (447).

# Wiring Diagrams

## **MACK**

- The following diagram has been developed for the model III Generation with DEUTSCH 9 PIN connector:
- Diesel Injection.
- The following diagram has been developed for the model IV+ Generation with OBD II 16 PIN connector:
- Diesel Injection.

## **Consulting a wiring diagram**

The interaction (diagnosis link) with the wiring diagrams in the following models has been improved:

## **MACK**

- III Generation with DEUTSCH 9 PIN connector;
- IV+ Generation with OBD II 16 PIN connector.

<b>Software</b>
TGS3s Dashboards
Logical groups in the adjustments page
Specific button for the external tools
“Operator entry” function
SMART mode
myTEXA - Diagnostic Reports service
<b>Diagnosis</b>
NORTH AMERICAN Market
<i>TRUCK</i>
<i>BUS &amp; COACH</i>
<i>LIGHT COMMERCIAL VEHICLES</i>
<b>Wiring Diagrams</b>
<b>Dashboard</b>
<b>Coverage</b>



## Software

TGS3s Dashboards

Logical groups in the adjustments page

Specific button for the external tools

“Operator entry” function

SMART mode

myTEXA - Diagnostic Reports service

## Diagnosis

NORTH AMERICAN Market

TRUCK

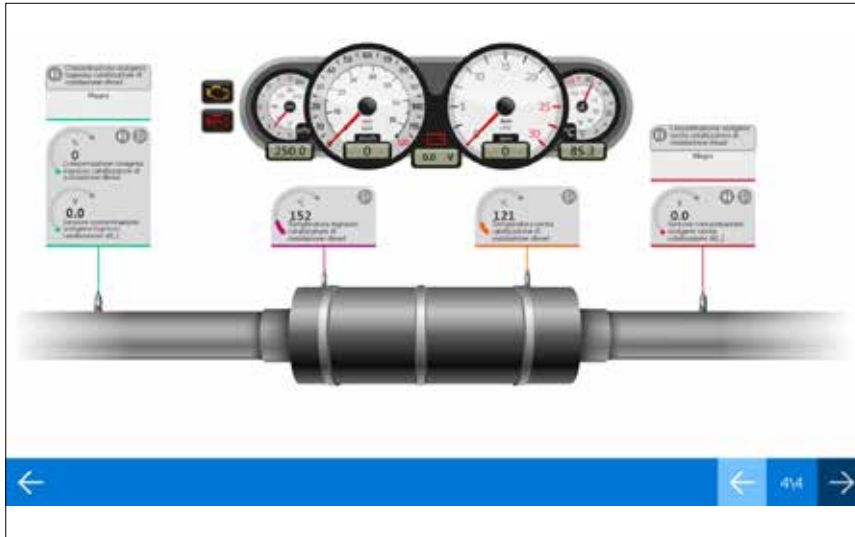
BUS & COACH

LIGHT COMMERCIAL VEHICLES

## Wiring Diagrams

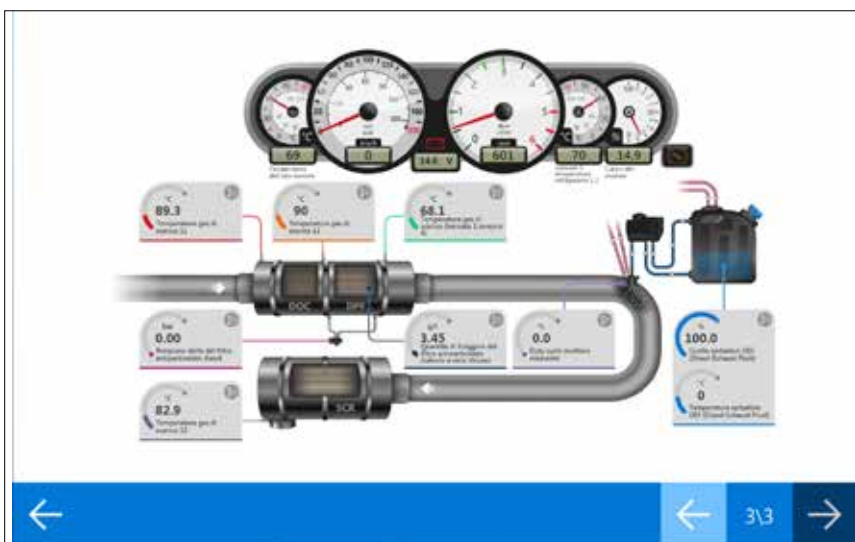
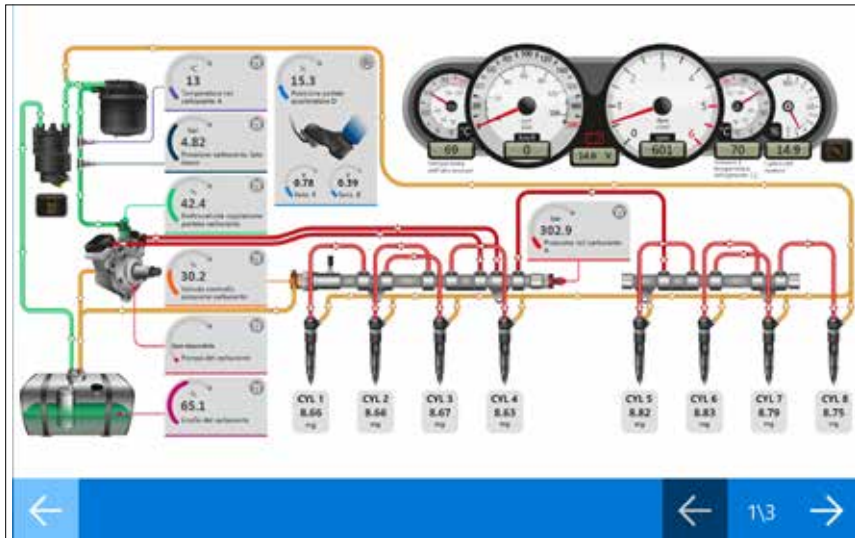
## Dashboard

## Coverage



## FORD

- Parameter dashboards have been developed for the models F Series Super Duty Power Stroke 6.7 [2017>] and F650 / F750 Power Stroke 6.7 [2017>] with Diesel Injection system "Ford Engine control unit".







### **IMPORTANT NOTICE FOR CUSTOMERS WHO OWN A PC with Windows 7**

Dear customers, Windows 7 is by now an obsolete operating system, no longer supported by Microsoft. To make the most of all the functions in TEXA's IDC5 diagnostic software, we recommend you update your Personal Computer to the latest version of the operating system Windows 10.

### **DIAGNOSTIC LIMITATIONS WARNING**

Although TEXA strives to keep its diagnostic tools up to date, it ever more often finds itself having to deal with very complex vehicle electronics that requires tools with advanced technological features.

For this reason we inform you that on some vehicles the diagnosis or certain specific functions may not be compatible with old generation TEXA tools (VCIs) that have a serial number with "DNTxxxxxxx".

**For further information contact your TEXA retailer.**

## Software

TGS3s Dashboards

Logical groups in the adjustments page

Specific button for the external tools

"Operator entry" function

SMART mode

myTEXA - Diagnostic Reports service

## Diagnosis

NORTH AMERICAN Market

TRUCK

BUS & COACH

LIGHT COMMERCIAL VEHICLES

## Wiring Diagrams

## Dashboard

## Coverage

# Coverage

## NORTH AMERICA

### TRAILER

BENDIX  
CARRIER TRANSICOLD  
HALDEX  
MERITOR - WABCO  
THERMO KING  
WABASH

### AMERICAN HEAVY DUTY

ALEXANDER DENNIS  
ALLEGRO  
BLUE BIRD  
CATERPILLAR  
COBUS  
E-ONE  
FODEN  
FREIGHTLINER  
INTERNATIONAL  
IVECO  
KENWORTH  
MACK  
MCI  
NAVISTAR  
NEW FLYER  
OSHKOSH  
PETERBILT  
PREVOST  
STERLING  
TEMSA  
VAN HOOL  
VOLVO BUS  
VOLVO TRUCKS  
WESTERN STAR

### POWERTRAIN AND BRAKE SYSTEM

ALLISON  
DETROIT - MBE  
EATON  
ISUZU  
MTU  
MWM  
PACCAR  
SCANIA  
ZF



## LIGHT COMMERCIAL VEHICLE

CHEVROLET  
DODGE  
FORD  
FREIGHTLINER  
GMC  
MERCEDES-BENZ  
NISSAN

## AMERICAN MEDIUM DUTY

CHEVROLET  
FORD  
GMC  
HINO  
INTERNATIONAL  
ISUZU (North America)  
KENWORTH  
MITSUBISHI FUSO  
PETERBILT  
STERLING  
UD TRUCKS (NISSAN DIESEL)

## Software

TGS3s Dashboards

Logical groups in the adjustments page

Specific button for the external tools

“Operator entry” function

SMART mode

myTEXA - Diagnostic Reports service

## Diagnosis

NORTH AMERICAN Market

TRUCK

BUS & COACH

LIGHT COMMERCIAL VEHICLES

## Wiring Diagrams

## Dashboard

## Coverage

## WARNING

The trademarks and logos of vehicle manufacturers in this document have been used exclusively for information purposes and are used to clarify the compatibility of TEXA products with the models of vehicles identified by the trademarks and logos. Because TEXA products and software are subject to continuous developments and updates, upon reading this document they may not be able to carry out the DIAGNOSTICS of all the models and electronic systems of each vehicle manufacturer mentioned within this document. References to the makes, models and electronic systems within this document must therefore be considered purely indicative and TEXA recommends to always check the list of the "Systems that can be diagnosed" of the product and/or software at TEXA authorized retailers before any purchase. **The images and the vehicle outlines within this document have been included for the sole purpose of making it easier to identify the vehicle category (car, truck, motorbike, etc.) for which the TEXA product and/or software is intended.** The data, descriptions and illustrations may change compared to those described in this document. TEXA S.p.A. reserves the right to make changes to its products without prior notice.



The Bluetooth® brand is the property of Bluetooth SIG, Inc., U.S.A., and is used by TEXA S.p.A. under license.  
Android is a trademark of Google Inc



[facebook.com/texacom](https://facebook.com/texacom)



[linkedin.com/company/texa](https://linkedin.com/company/texa)



[instagram.com/texacom](https://instagram.com/texacom)



[youtube.com/texacom](https://youtube.com/texacom)

Copyright TEXA S.p.A.

03/2021 - NA - V1

**TEXA USA Inc.**  
409 Joyce Kilmer Ave  
New Brunswick,  
NJ 08901  
+1 855.200.8392  
[www.texausa.com](http://www.texausa.com)  
[northamerica@texa.com](mailto:northamerica@texa.com)