



# jaltest cv

COMMERCIAL VEHICLES

## INNOVATIONS 21.1

# SOFTWARE INNOVATIONS

The new software version **Jaltest 21.1** once again offers more improvements and innovations that consolidate this tool as a benchmark in **multibrand diagnosis** for commercial, agricultural and OHW (Off-Highway) vehicles.

Furthermore, in this version, Jaltest includes the coverage of the **Jaltest Marine** project. Contact your distributor and acquire now the license that also allows you to diagnose vessels and jet skis with the same device and a single software.

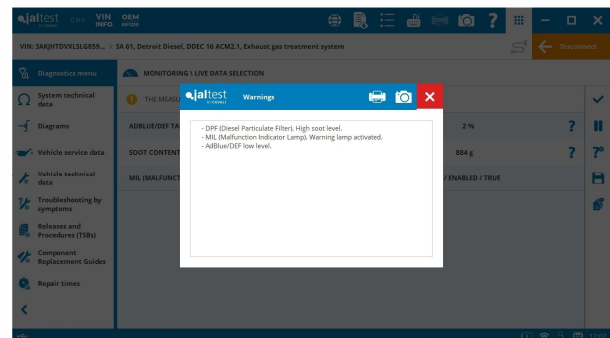
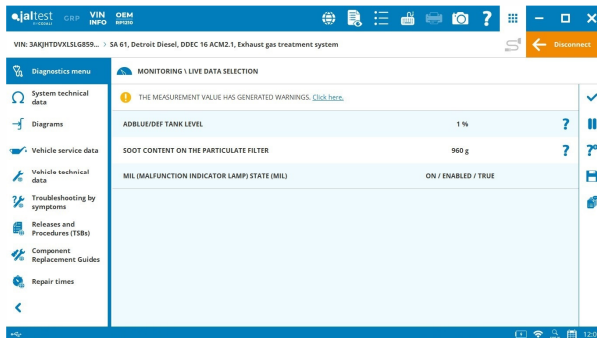
Our **Jaltest University** division includes the entire Jaltest training offer, from courses traditionally taught on-site to online courses or webinars. Thus, we have adapted to the new needs for universal and quality training within the reach and at the disposal of any professional in the sector. First courses will be available soon.



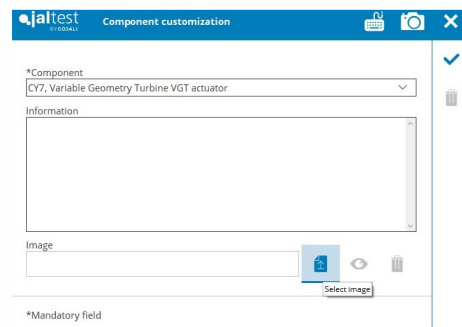
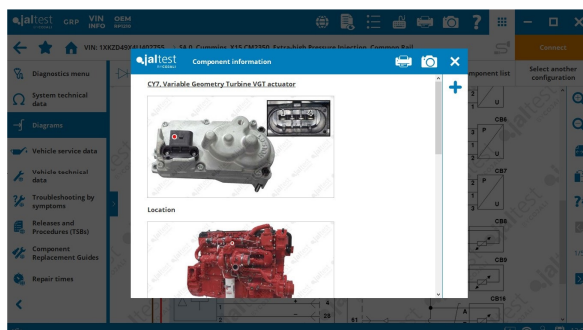
Next, the most relevant software innovations are shown.

## Measurement warnings

In addition to the different display methods available in Jaltest; the possibility to display measurements in graph format, define measurement triggers (also in measurement groups from this 21.1 version) and have measurement warnings during the display of them, now it is also possible to display a summary of slow-dynamic measurement warnings.



## Customization of component information

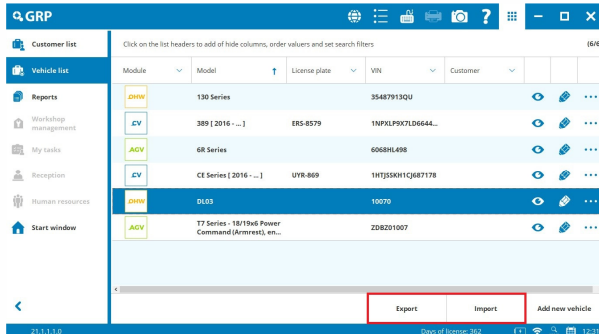


## Others

- Dynamic helps depending on the measurement value in an action.
- Help in the selection of the wiring diagram configuration.
- Fault list order. The present faults are shown first.
- Relevant information on functionalities in the action menu.

# GRP

## Export/Import vehicle list



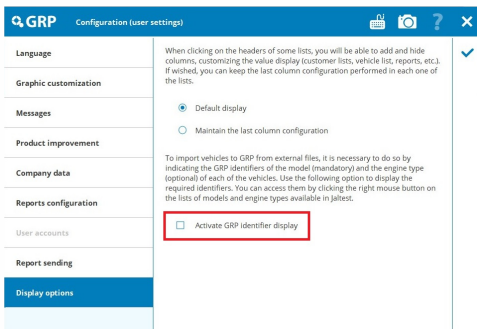
It is possible to export/import the vehicle list through Excel or CSV files quickly and easily. This allows the user to share the vehicles created in Jaltest with others from other platform or ERP of their company, and vice versa.

To import vehicles, an empty template with a defined format or with the data of the vehicles that the list has can be generated. In this way, some data could also be modified. It is important not to modify the header value or column position of the table.

Vehicle code	Model identifier	Engine type identifier	License plate	VIN	Number or name
1	6549	956	ERS-8579	19PXL9X7LD654400	
2	4265	7682		ZD8221007	
3	16340	3		354879130U	
4	6660	896	UYR-869	1HTJSSKH1CJ887178	
5	10669	16		10070	
7	4791	6295		6068HL498	

The “Model identifier” and, optionally, the “Engine type identifier” must also be completed in the template. This operation

is important. The model identifier will allow you to relate the vehicle from the list with a model from Jaltest. This is the only way to enjoy all advantages of being able to create GRP vehicles such as, for example, the advantage of associating diagnostic reports. The identifier is obtained by clicking on the right button of the mouse on model/engine type in Jaltest if it has been configured previously.



## Others

- Possibility of associating several vehicles to a customer at once.
- Improvement in the GRP lists including more columns and filters.
- App customization by user.

The vehicle record, vehicle types, brands, customized measurements, graphic configuration, language, measurement units, etc. will be displayed depending on the user who has registered in the application.

# BRANDS and MODELS

---

## FORD

Medium Duty F-650/750 7.3 (2021 - ...).

Pick Up F-250/550 7.3 (2020 - ...).

Van E-Series 7.3 (2021 - ...).

# DIAGNOSIS AND SYSTEMS

---

Take into account that this document is only a summary of the most relevant information of this new version. For further information, please visit Jaltest Report.

Overall, **technical information and troubleshooting** of the most common fault codes in the workshop have been expanded thanks to the communication channels with customers such as the technical support offered by the project, training, Jaltest Feedback and “Product improvement” option.

We work each update to expand the **references and variants** of all systems increasing coverage and ensuring the reliability of interactions with vehicle systems.

More than 205560 repair times for the most common brands have been added.

# HEAVY DUTY VEHICLES

## ALLISON

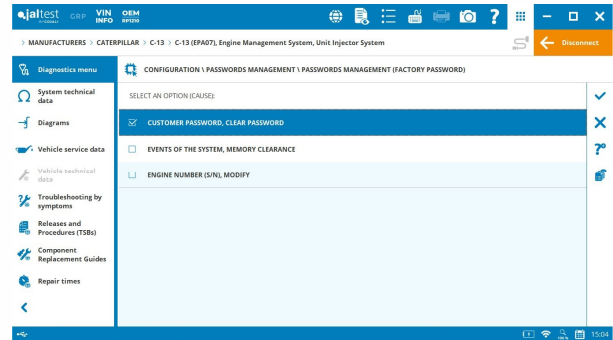
The color codes of the wiring diagram cables have been included in systems from **ALLISON** brand.

**1000/2000 4th & 5th Gen Series**, component replacement guides for the most common components.

## CATERPILLAR

Factory password management. The functions protected by the factory password are the DPF ash service reset, the DPF replacement (only for **EPA07** engines), the engine serial number modification, etc.

Total operating data of the engine and aftertreatment systems (only for **EPA07** engines).



More than 200 new component replacement guides in engines such as **3126, 3406, 3176, C-18, C-16**, etc.

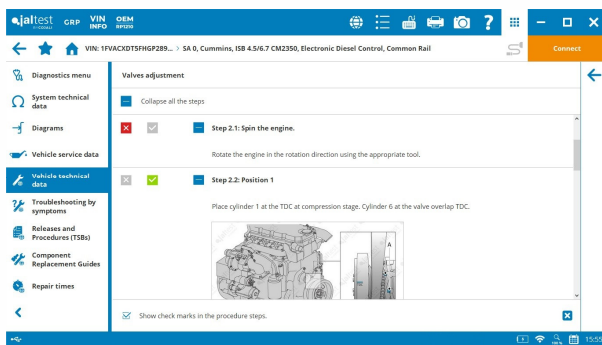
In this version, the service data is also available through “MANUFACTURERS” vehicle type.

## CUMMINS

In several systems from **CUMMINS** brand, the activation of the VGT actuator in engines such as the **ISL 8.9/9.5 CM2150** engine or the **ISB CM2150D** system, as well as the calibration of the VGT actuator in 4-cylinder **ISB engines** have been included.

**ISF 2,8/3,8/4,5 CM2250**, backdoor password management.

**X12 CM2350** engine control system, VGT calibration, VGT compatibility test, fan test, AdBlue/DEF system test, etc.



New engine type data, vehicle service data and technical procedures such as the distribution phasing, valve adjustment, fuel filter change, rocker arm disassembly and assembly or coolant filling/bleeding.

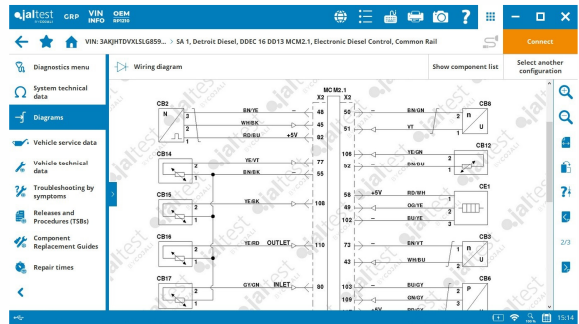
## DETROIT DIESEL

**EPA 10/GHG14/GHG17** vehicles:

- New variants for 2020-2021 vehicles.
- New parameter groups: Overspeed, progressive shift, optimized idle and fan type.
- Setting of the cruise control, engine brake and the idle shutdown.
- Extended coverage for freeze frame data in DTCs for which the cause and the effect information have been also included.

**DDEC & MBE** engines:

- More than 50 new component replacement guides with helpful images.
- Technical procedures such as the distribution phasing or valve lash adjustment.
- In this version, the service data is also available through “MANUFACTURERS”.
- The color codes of the wiring diagram cables have been included.



**New Cascadia** modules, new variants and extended coverage in 2020-2021 vehicles and troubleshooting guides by code for the **ICUC** system.

**DT12** transmission, advanced functions such as clutch overload monitoring data, dyno mode, TCM unlock, etc.

## EATON

**Endurant** and **Precision** transmissions, component replacement guides for the most components and troubleshooting by symptom.

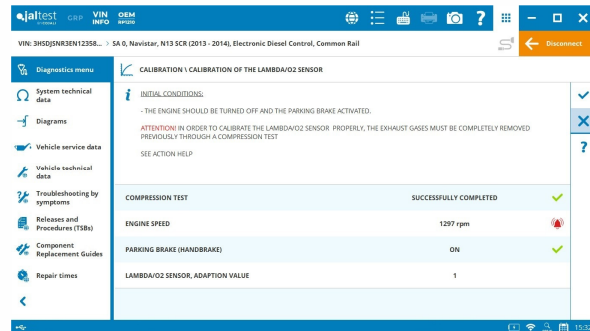
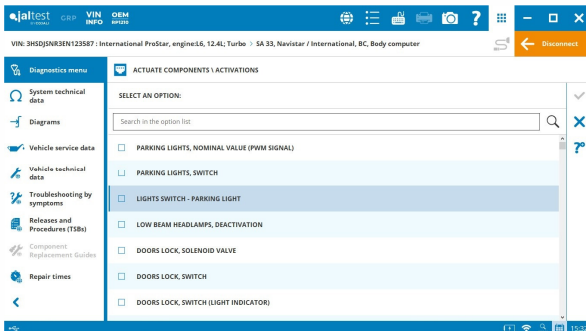
## NAVISTAR INTERNATIONAL

**MaxxForce & N-Series** engines:

- **MaxxForce 11/13** and **N13** engine control systems, Lambda/O2 sensor calibration procedure.
- **MaxxForce DT/9/10** engine control systems, new parameter groups such as the engine protection and extended coverage in the idle shutdown timer and the vehicle speed sensor type settings.
- Cause and effect information have been also included to the most common DTCs.

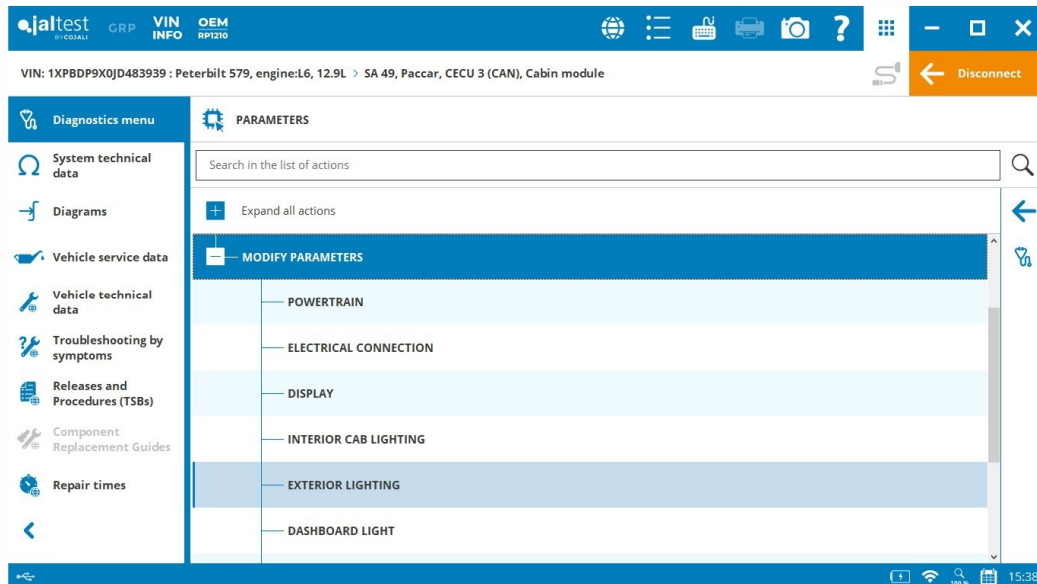
Body controller **BC** module, more than 450 new bi-directional tests.

Many technical procedures have been also included that apply to the different engines of this brand: the valve and engine brake adjustment, the disassembly/assembly of the engine brake actuator, the distribution phasing, etc.



## PACCAR

Paccar module **CECU3** on CAN, parameter modification and copy/paste the ECU memory in some of the software variants.



## PSI

**PSI 6.0 Gasoline** engine control system, bidirectional tests, engine technical data and service data.

Vehicle service data for **8.8 Gasoline engines GHG17, 8.8 LPG GHG17**, etc.

## VOLVO/MACK

**V3** transmission, management of references and variants of control units through web service in some systems. This functionality allows the user to have an extended and updated coverage in new software references.

## TRAILER

### MFG

⊕ New **Globetech MFG, Gen2 ABS** system.



## LIGHT COMMERCIAL VEHICLES

### DODGE

**PCM Cummins 6.7** engine control system in RAM 2013-2017 models, PTO configuration.

### FORD

⊕ New **7.3 Gasoline** system in **E-Series 7.3 (2021 - ...)** models.

### MERCEDES-BENZ

⊕ **MFK camera ADAS** systems and **ABA emergency braking** system in **Sprinter 2500/3500/4500** models, which include the camera calibration and the parameter setting of the radar height respectively.

### MITSUBISHI

⊕ **ABS** braking system in **Triton/L200** models with 4N15 engine, developed with advanced functions.