

## IDC5 OFF-HIGHWAY RELEASE 22.0.0

Dear Customer,

Dear Customer, the new diagnostic features included in the IDC5 OHW 22.0.0 update, which also contains the continuous updates IDC5 OHW 21.1.0 / 21.2.0 / 21.3.0 / 21.4.0, allow working on a large number of vehicles that belong to makes of the most popular manufacturers. The work TEXA's developers carried out on agricultural vehicles, forklifts, telehandlers, construction vehicles and special vehicles guarantees all mechanics the opportunity to use diagnostic tools that are always updated and state-of-the-art, to operate successfully on the vast majority of vehicles on the road.

IDC5 OHW 22.0.0 contains new possible selections for the major makes worldwide, among which: ANTONIO CARRARO, BELL, BOBCAT, BOMAG, BOSCH SCR, CASE CE, CATERPILLAR, CLAAS, DEUTZ, HAULOTTE, HIDROMEK, HOLMER, JCB, JOHN DEERE, KOHLER, KRONE, KUBOTA, LIEBHERR, LIUGONG, MANITOU, MASSEY FERGUSON, NEW HOLLAND, NEW HOLLAND (LATAM), NEW HOLLAND CE, NEW HOLLAND CE (LATAM), OVERAASEN, PAUS, PERKINS, PRINOTH, SISU, STEYR, TERBERG, VOLVO CE, WACKER NEUSON, WEIDEMANN, YANMAR.

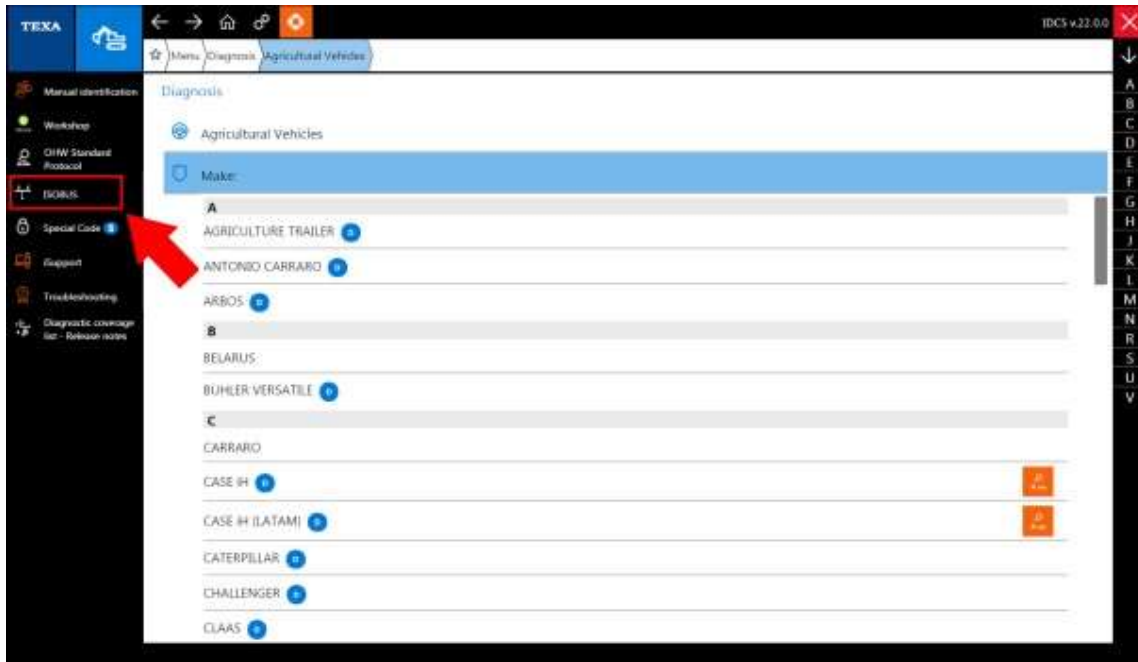
The OHW update 22.0.0 also offers new, very useful Wiring Diagrams and DASHBOARDS.

### **New Software Features**

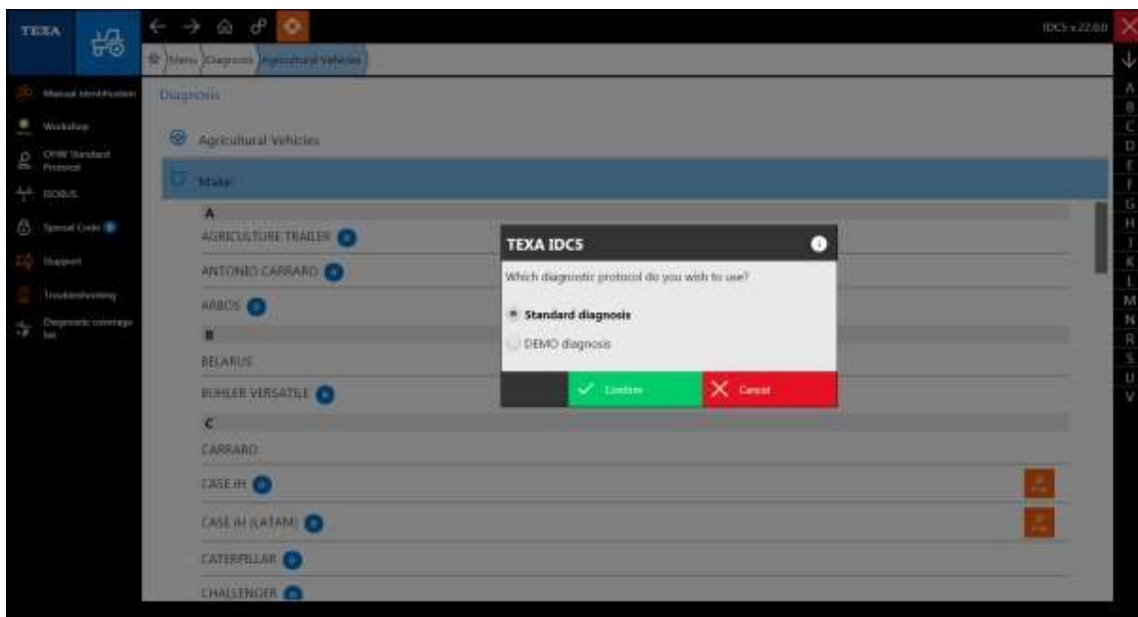
#### **ISOBUS button**

Within the “Agricultural Vehicles” category, a new button called “ISOBUS” has been implemented.

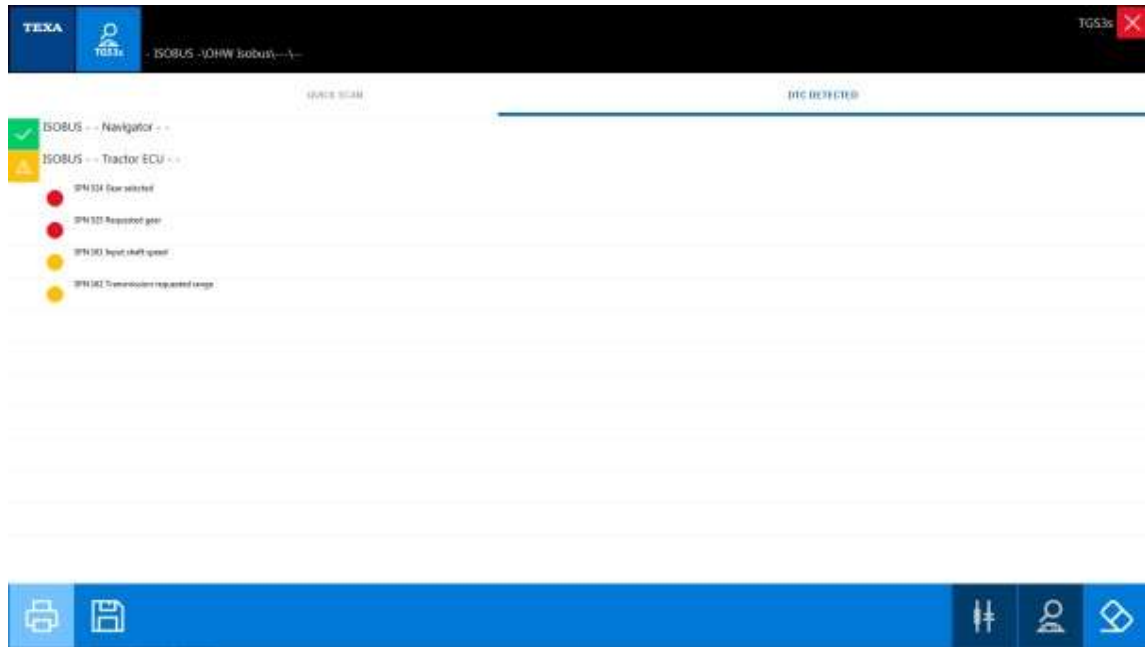
This new function allows performing a scan on the vehicles that support the ISOBUS protocol.



Selection of the ISOBUS button.



Selection between standard diagnosis and DEMO diagnosis.



Internal screen after the scan.

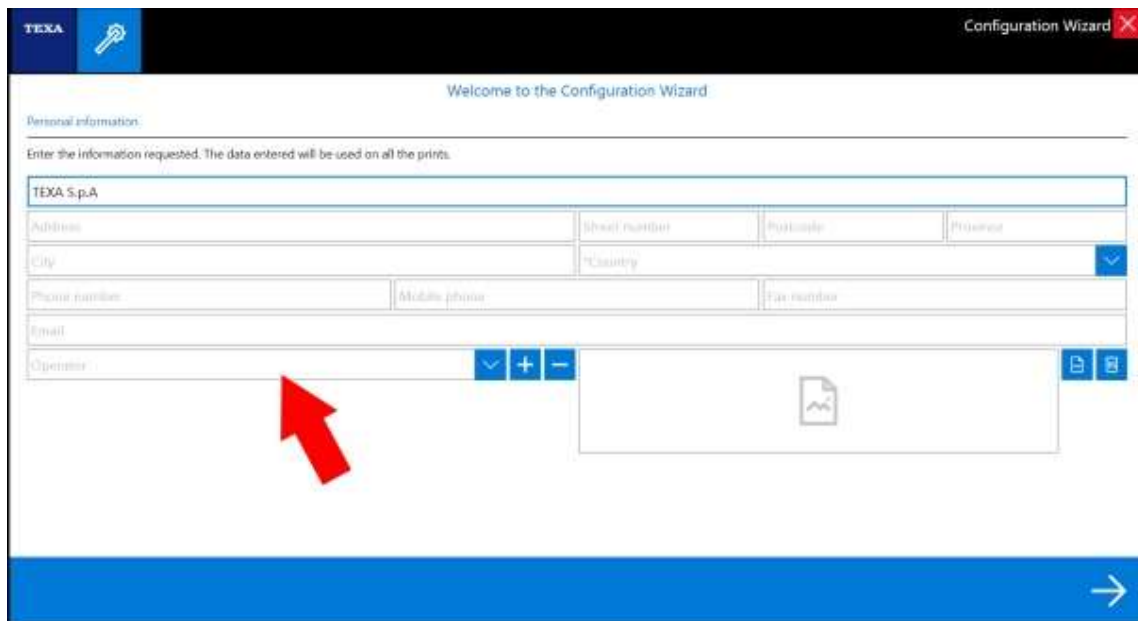
### **“Operator entry” function**

A new function called “operator entry” has been implemented.

This allows configuring the IDC5 software with various diagnostic technicians and collecting the data separately for each operator.

The collected data can be viewed by customers in the Diagnosis Report section in their “myTEHA” web page.

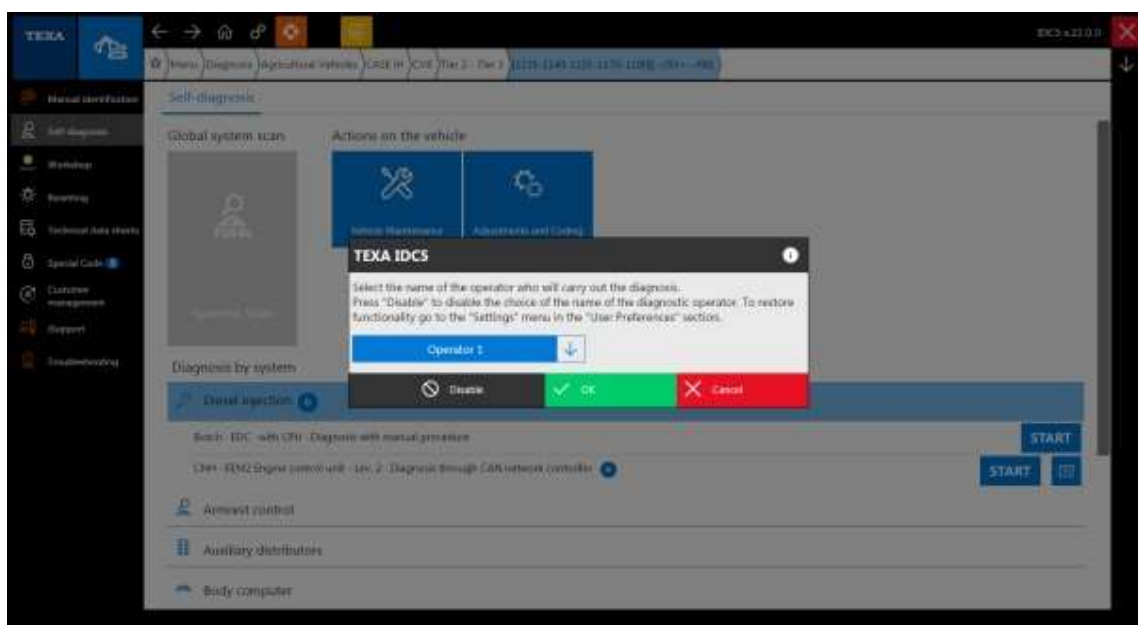
To enable the “operator entry” function, simply enter the diagnostic technician's name in the tool configuration screen.



Tool configuration screen.

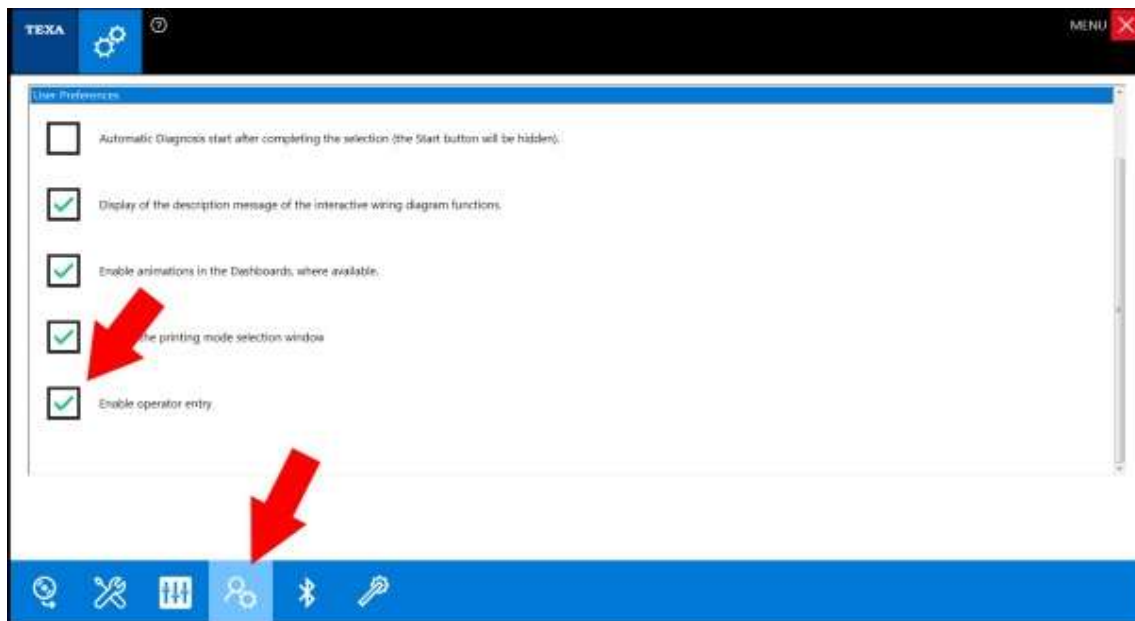
The “+” and “-” buttons allow you to add or remove the diagnostic operators.

When carrying out a diagnosis, the software will request you to select the operator's name.



Operator selection during the diagnosis.

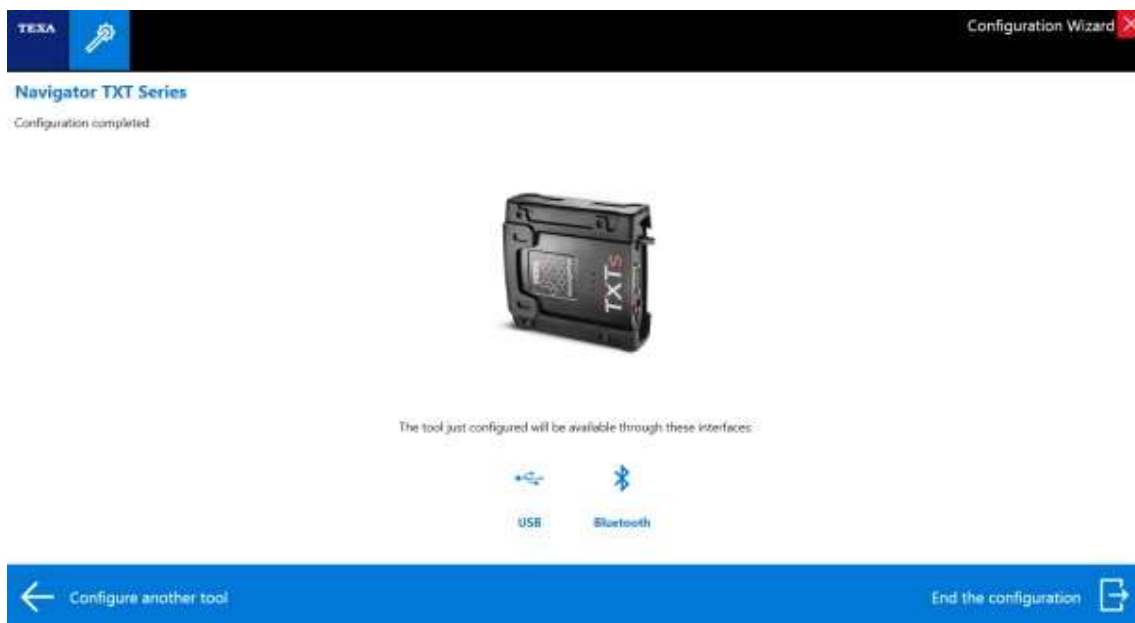
This function can always be deactivated/activated by clicking on the “Disable” button when carrying out the diagnosis, or from the “Tools-User Preferences” menu.



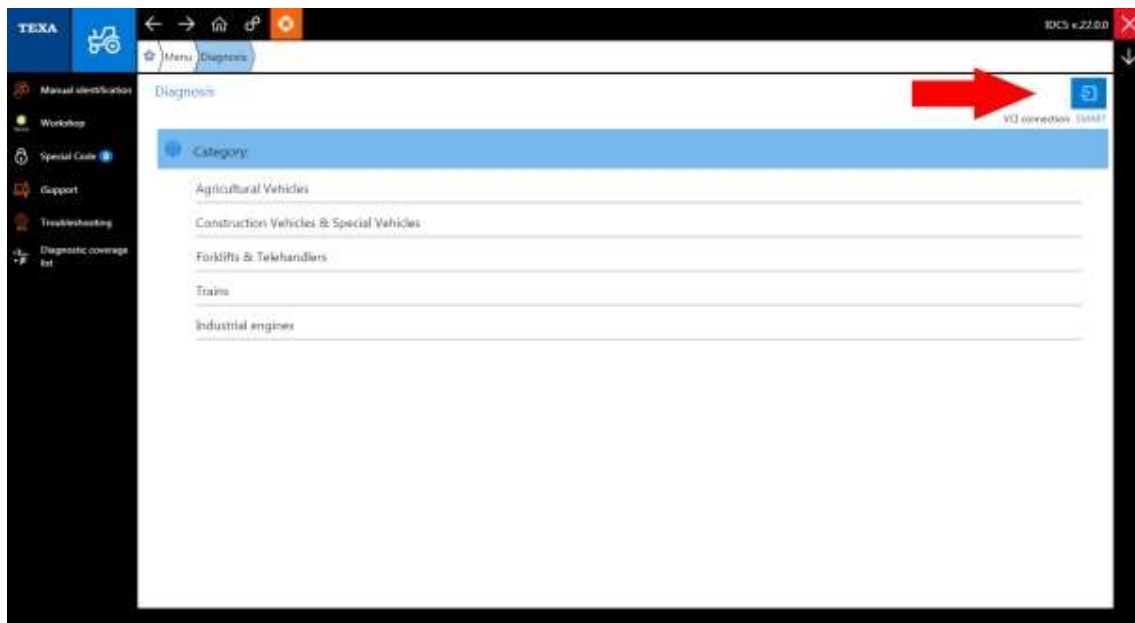
Function disabling from “Tools-User Preferences”.

## SMART mode

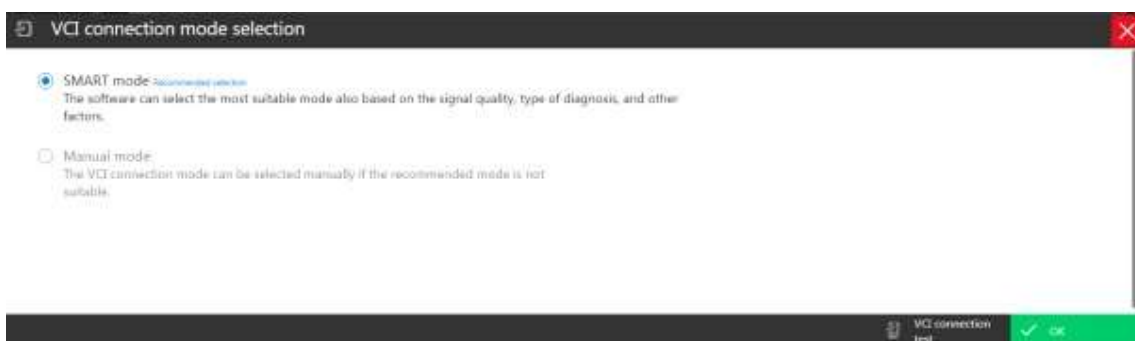
Starting from the OHW version 22, a new tool association interface and communication channel selection has been implemented, called “SMART mode”.



New tool configuration interface.



Icon to change connection mode.



SMART mode.



Manual mode.

## **AGRICULTURAL VEHICLES**

ANTONIO CARRARO

- The "Diesel injection" systems have been developed for the following new models:
  - KOHLER tractor;
  - KUBOTA tractor;
  - YANMAR tractor.

## BOSCH SCR

- The "Bosch Denoxtronic 2 Pump module replacement - Data transfer with cable T71" SCR/DPF after-treatment system has been updated.

## CLAAS

- The "Suspended axle", "Automatic transmission", "A/C", "Auxiliary control valves", "Multifunction display", "Special function", "External lamp control unit", "Diesel injection", "Power module", "PTO management", "Engine-vehicle adjustment", "Rear hydraulic linkage", "Instrumentation", "Indicator and control unit" systems have been developed for the following new models:
  - Arion 600 Series Tier 4 Final;
  - Arion 600 Series Stage V.

## DEUTZ Engine

- The "Bosch EMR4/MD1 EDC 17 Tier 4/Stage V" Diesel injection system has been updated.
- The following activations have been developed for the "Bosch EMR4/MD1 EDC 17 Tier 4/Stage V" Diesel injection system:
  - "EGR test";
  - "Cylinder cut-off";
  - "Input test";
  - "Throttle valve".
- The following adjustments have been developed for the "Bosch EMR4/MD1 EDC 17 Tier 4/Stage V" Diesel injection system:
  - "AFT (After-treatment): Ash load reset";
  - "AFT (After-treatment): Soot load reset".

## JOHN DEERE

- The new model Shredder 9000 Series has been developed with the "Liebherr ECU2-HD Injection and SCR Bank 1" and "Liebherr ECU3 SCR Bank 2" Diesel injection systems.

## KRONE

- The new model MAN Combine harvester Big M Series has been developed with the following systems:
  - "Diesel injection";
  - "SCR/DPF after-treatment system".

## KUBOTA

- *The “Denso ECU Engine Control Unit” Diesel injection system has been updated.*
- *The “VCU Vehicle Control Unit” gateway system has been updated for the model M7000 Series.*

## KUBOTA engine

- *The “Denso ECU Engine Control Unit” Diesel injection system has been updated.*

## MASSEY FERGUSON

- *All the diagnostic systems in the following models have been updated:*
  - *56xx Series;*
  - *66xx / 76xx / 77xx Series;*
  - *86xx / 87xx Series.*
- *The “Automatic transmission”, “Multifunction display”, “Electronic hydraulic linkage” and “Suspensions” systems have been updated for the following models:*
  - *44xx Series;*
  - *54xx Series;*
  - *64xx Series;*
  - *74xx Series;*
  - *84xx Series.*

## NEW HOLLAND

- *The “Body computer”, “Armrest control”, “Multifunction display”, “Diesel injection”, “Engine-vehicle adjustment”, “Special equipment system” and “Instrumentation” systems have been developed for the new models:*
  - *Combine harvester CR Series Tier 3 - Tier 4 Interim [VIN: xx1540001 > xx1584999];*
  - *Combine harvester CR Series Tier 3 - Tier 4 Interim [VIN: xx1600001 > xx1644999];*
  - *Combine harvester CR Series Tier 3 - Tier 4 Interim [VIN: xx1660001 > xx1780999];*
  - *Combine harvester CX Series Tier 3 - Tier 4 Interim 8000 [VIN: xx1540001 > xx1584999];*
  - *Combine harvester CX Series Tier 3 - Tier 4 Interim 8000 [VIN: xx1600001 > xx1644999];*
  - *Combine harvester CX Series Tier 3 - Tier 4 Interim 8000 [VIN: xx1660001 > xx1780999].*
- *The new model T7 Series Tier 4 Final M.Y. 2018 CVT has been developed with the following systems:*
  - *“Suspended axle”;*
  - *“Automatic transmission”;*
  - *“A/C”;*



- *"Controls on driver's side";*
- *"Armrest control";*
- *"Auxiliary control valves";*
- *"Steering electronics";*
- *"Parking brake";*
- *"PTO management";*
- *"Power supply and ground system";*
- *"Diesel injection";*
- *"Braking system";*
- *"Electronic hydraulic linkage";*
- *"Instrumentation";*
- *"Additional instrumentation";*
- *"Four-wheel drive";*
- *"Indicator and control unit".*

### **NEW HOLLAND (LATAM)**

- *The "Body computer", "Armrest control", "Multifunction display", "Diesel injection", "Engine-vehicle adjustment", "Special equipment system" and "Instrumentation" systems have been developed for the new models:*
  - *Combine harvester CR Series Tier 3 5.85/6.80/7.80;*
  - *Combine harvester CR Series Tier 3 7.90/8.90;*
  - *Combine harvester TC Series Tier 3 [VIN: HCCYxxxxKKCL08530 and higher];*
  - *Combine harvester TX Series Tier 3 [VIN: HCCYxxxxKKCL08530 and higher].*

### **PERKINS Engine**

- *The "ECM Engine Control Module Tier 2 / Tier 3 / Tier 4" Diesel injection system has been updated.*

### **STEYR**

- *The new model CVT SISU - Tier 2 120-130-150-170 has been developed with the following systems:*
  - *"Automatic transmission";*
  - *"Armrest control";*
  - *"Multifunction display";*
  - *"Auxiliary control valves";*
  - *"Diesel injection".*

### **YANMAR Engine**

- *The "AFT (After-treatment): DPF regeneration" adjustment has been updated for the "ECU Engine Control Unit" Diesel injection system.*

## **CONSTRUCTION VEHICLES & SPECIAL VEHICLES**

### **BOBCAT**

- *All the diagnostic systems in the model Skid steer Series S & T have been updated.*
- *The “(ACD) Attachment Control Device” special equipment system has been updated.*

### **BOSCH SCR**

- *The "Bosch Denoxtronic 2 Pump module replacement - Data transfer with cable T71" SCR/DPF after-treatment system has been updated.*

### **CASE CE**

- *The new model Excavator CXD Series has been developed with the following systems:*
  - *"Complete vehicle diagnosis";*
  - *"Diesel injection";*
  - *"SCR/DPF after-treatment system".*
- *The “Engine-vehicle adjustment” and “Instrumentation” systems have been developed for the new models:*
  - *Skid steer B Series;*
  - *Skid steer SR & SV Series;*
  - *Skid steer TR & TV Series.*

### **CATERPILLAR**

- *The following adjustments have been updated for the “Vehicle hydraulics management”:*
  - *"Calibration: lift lever";*
  - *"Calibration: tilt lever";*
  - *"Calibration: implement raise valve 1";*
  - *"Calibration: implement lower valve 1";*
  - *"Calibration: third function lever rearward valve";*
  - *"Calibration: third function lever forward valve";*
  - *"Calibration: brake/decelerator pedal".*

### **DEUTZ Engine**

- *The “Bosch EMR4/MD1 EDC 17 Tier 4/Stage V” Diesel injection system has been updated.*
- *The following activations have been developed for the “Bosch EMR4/MD1 EDC 17 Tier 4/Stage V” Diesel injection system:*
  - *“EGR test”;*
  - *“Cylinder cut-off”;*
  - *“Input test”;*

- *“Throttle valve”.*
- *The following adjustments have been developed for the “Bosch EMR4/MD1 EDC 17 Tier 4/Stage V” Diesel injection system:*
  - *“AFT (After-treatment): Ash load reset”;*
  - *“AFT (After-treatment): Soot load reset”.*

## JCB

- *The “Delphi DCM 3.3+” Diesel injection system has been updated.*

## LIEBHERR

- *The “ECU2-HD” Diesel injection system has been developed for the following models:*
  - *Loader;*
  - *Bulldozer;*
  - *LTM Series.*
- *The new model YANMAR Loader with the “Yanmar ECU Engine Control Unit” Diesel injection system has been developed.*

## LIUGONG

- *The new model CUMMINS Loader with the “Cummins J1939 Core 2 - Proprietary protocol” Diesel injection system has been developed.*

## NEW HOLLAND CE

- *The “Automatic transmission”, “Traction control”, “Multifunction display”, “Diesel injection”, “Engine-vehicle adjustment”, “Search for installed systems”, “SCR/DPF after-treatment system”, “Instrumentation” and “Indicator and control unit” systems have been developed for the following new models:*
  - *Loader W Series;*
  - *Dozer DC & D Series;*
  - *Excavator E Series;*
  - *Skid steer 200 Series;*
  - *Skid steer 300 Series;*
  - *Grader F Series;*
  - *Backhoe B Series;*
  - *Backhoes U80C.*

## NEW HOLLAND CE (LATAM)

- *The “Automatic transmission”, “Diesel injection”, “Engine-vehicle adjustment”, “Instrumentation”, “Four-wheel drive” and “Indicator and control unit” systems have been developed for the following new models:*
  - *Loader W Series;*
  - *Dozer D Series;*
  - *Excavator E Series;*

- *Skid steer 300 Series;*
- *Grader F Series;*
- *Grader RG Series;*

## OVERAASEN

- *The new model TV Series has been developed with the following systems:*
  - *"Diesel injection";*
  - *"Engine-vehicle adjustment".*

## PAUS

- *The "Diesel injection" system has been developed for the following new models:*
  - *Loader;*
  - *Dumper.*

## PERKINS Engine

- *The "ECM Engine Control Module Tier 2 / Tier 3 / Tier 4" Diesel injection system has been updated.*

## SISU Engine

- *The "EEM4 Engine control unit SISU protocol" Diesel injection system has been updated.*

## VOLVO CE

- *The "Transmission calibration" adjustment has been developed for the models Loader 11 t - 56 t Tier 4 Final and Compact Loader 5.5 t - 9.5 t Tier 4 Final.*
- *The "Particulate filter regeneration" adjustment has been updated for the model Road rollers Tier 3 / Tier 4 Interim.*

## WACKER NEUSON

- *The new model YANMAR Loader with the "ECU Engine Control Unit" Diesel injection system has been developed.*

## WEIDEMANN

- *The new model YANMAR Loader with the "ECU Engine Control Unit" Diesel injection system has been developed.*

## **FORKLIFTS & TELEHANDLERS**

### **BOSCH SCR**

- *The "Bosch Denoxtronic 2 Pump module replacement - Data transfer with cable T71" SCR/DPF after-treatment system has been updated.*

## DEUTZ Engine

- *The “Bosch EMR4/MD1 EDC 17 Tier 4/Stage V” Diesel injection system has been updated.*
- *The following activations have been developed for the “Bosch EMR4/MD1 EDC 17 Tier 4/Stage V” Diesel injection system:*
  - *“EGR test”;*
  - *“Cylinder cut-off”;*
  - *“Input test”;*
  - *“Throttle valve”.*
- *The following adjustments have been developed for the “Bosch EMR4/MD1 EDC 17 Tier 4/Stage V” Diesel injection system:*
  - *“AFT (After-treatment): Ash load reset”;*
  - *“AFT (After-treatment): Soot load reset”.*

## HAULOTTE

- *The "Diesel injection" systems have been developed for the following new models:*
  - *DEUTZ boom lift;*
  - *KUBOTA boom lift;*
  - *Articulating boom lift;*
  - *Scissor lift;*
  - *Telehandler.*

## MANITOU

- *The “MCM Motor Control Module Tier 4” Diesel injection system has been updated for the model MERCEDES-BENZ Telehandler.*

## PAUS

- *The new model Telehandler with the “Bosch EMR4/EMR5 EDC 17/MD1 Tier 4 / Stage V” Diesel injection system has been developed.*

## **WIRING DIAGRAMS**

### BELL

- *The following diagrams have been developed for the model Dumper E Series:*
  - *Diesel injection;*
  - *SCR/DPF aftertreatment system.*

### BOMAG

- *The following diagrams have been developed for the model BF Series:*
  - *Diesel injection;*
  - *SCR/DPF aftertreatment system.*

## CLAAS

- *The following diagrams have been developed for the model MERCEDES-BENZ Combine harvester Tucano 400 Series:*
  - *Diesel injection;*
  - *SCR/DPF aftertreatment system.*
- *The following diagrams have been developed for the model Combine harvester Tucano 500 Series:*
  - *Diesel injection;*
  - *SCR/DPF aftertreatment system.*
- *The following diagrams have been developed for the model Combine harvester Tucano 600 Series:*
  - *Diesel injection;*
  - *SCR/DPF aftertreatment system.*

## DEUTZ Engine

- *The following diagram has been developed for the engines TCD 4.1 - SCR, TCD 6.1 – SCR and TCD 2.9 - DOC/CRT:*
  - *Diesel injection.*

## HIDROMEK

- *The following diagrams have been developed for the model Loader:*
  - *Diesel injection;*
  - *SCR/DPF aftertreatment system.*

## HOLMER

- *The following diagrams have been developed for the model Terra Dos T4:*
  - *Diesel injection;*
  - *SCR/DPF aftertreatment system.*

## KOHLER engine

- *The following diagram has been developed for the engines KDI 1903, KDI 2504 stage V, KDI 1903 stage V, KDI 3504 and KDI 3504 SCR:*
  - *Diesel injection.*
- *The following diagram has been developed:*
  - *SCR/DPF aftertreatment system.*

## MANITOU

- *The following diagrams have been developed for the model MERCEDES-BENZ Telehandler:*
  - *Diesel injection;*
  - *SCR/DPF aftertreatment system.*

## PERKINS Engine

- *The following diagram has been developed for the engines 403J and 404J:*
  - *Diesel injection.*

## PRINOTH

- *The following diagrams have been developed for the Husky model:*
  - *Diesel injection;*
  - *SCR/DPF aftertreatment system.*
- *The following diagrams have been developed for the Leitwolf model:*
  - *Diesel injection;*
  - *SCR/DPF aftertreatment system.*

## TERBERG

- *The following diagrams have been developed for the model YT Series:*
  - *Diesel injection;*
  - *SCR/DPF aftertreatment system.*

## YANMAR Engine

- *The following diagram has been developed for the engine 3TNV DOC DPF:*
  - *Diesel injection.*

## **CONSULTING A WIRING DIAGRAM**

The interaction (diagnosis link) with the wiring diagrams has been improved and new technical sheets have been associated in the following models:

## BELL

- *Dumper E Series.*

## BOMAG

- *BF Series.*

## CLAAS

- *MERCEDES-BENZ Combine harvester Tucano 400 Series;*
- *Combine harvester Tucano 500 Series;*
- *Combine harvester Tucano 600 Series.*

## DEUTZ Engine

- *TCD 4.1 – SCR;*
- *TCD 6.1 – SCR;*
- *TCD 2.9 - DOC/CRT.*

## HIDROMEK

- *Loader.*

## HOLMER

- *Terra Dos T4.*

## KOHLER engine

- *KDI 1903;*
- *KDI 2504 stage V;*
- *KDI 1903 stage V;*
- *KDI 3504;*
- *KDI 3504 SCR.*

## MANITOU

- *MERCEDES-BENZ Telehandler.*

## PERKINS Engine

- *403J;*
- *404J.*

## PRINOTH

- *Husky;*
- *Leitwolf.*

## TERBERG

- *YT Series.*

## KUBOTA

- *M7000 Series.*

## YANMAR Engine

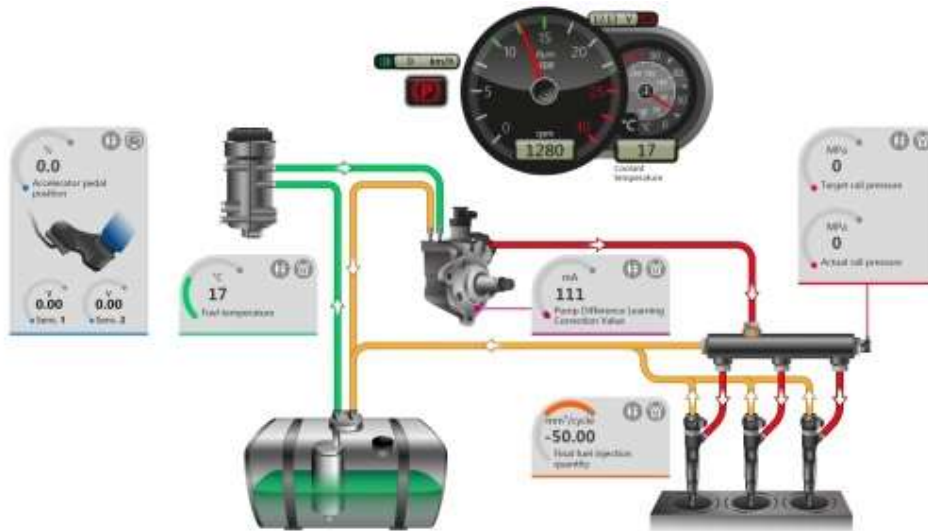
- *3TNV DOC DPF.*

## **DASHBOARDS**

### KUBOTA engine

- *The parameter dashboards have been updated for all the vehicles with the “Denso ECU Engine Control Unit” Diesel injection system.*



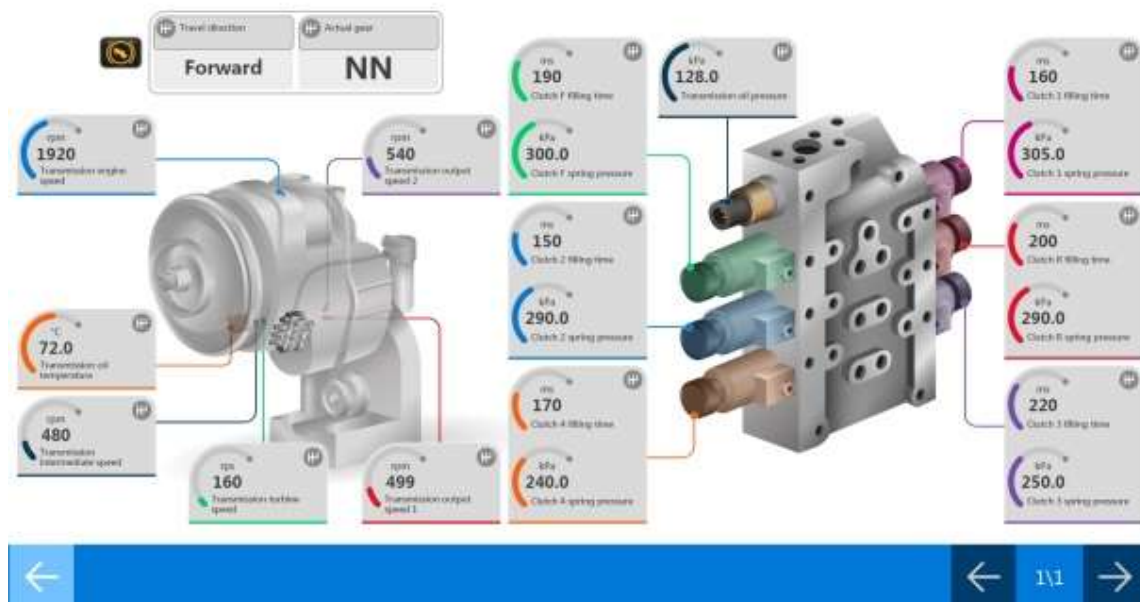


- *The procedure dashboards have been updated for all the vehicles with the “Denso ECU Engine Control Unit” Diesel injection system.*



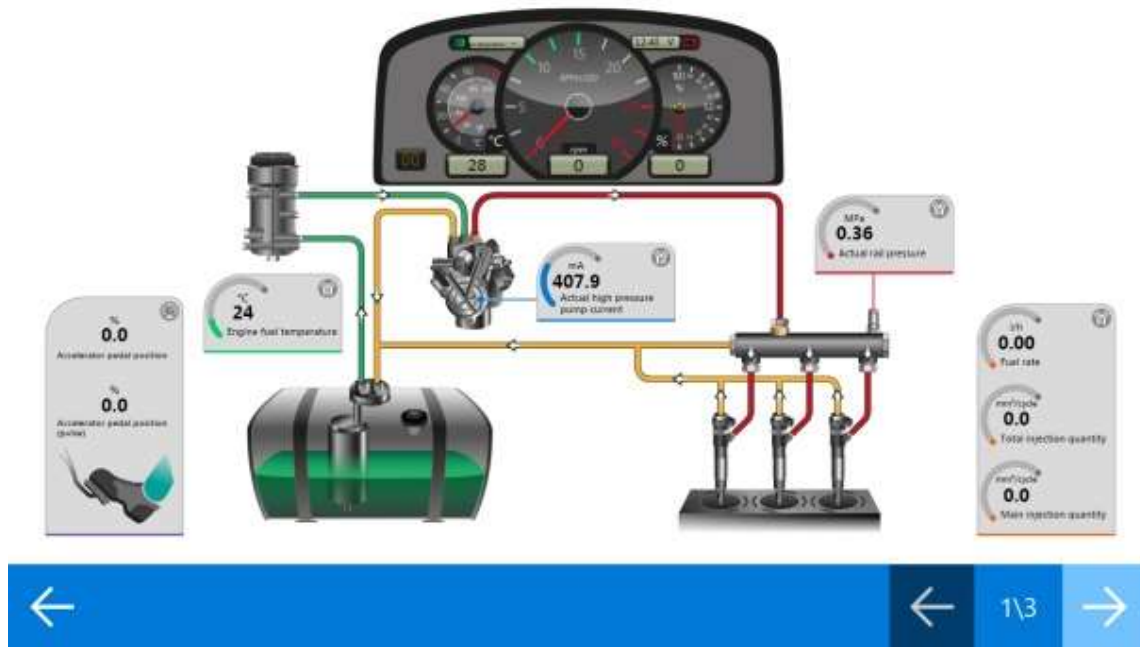
## VOLVO CE

- The parameter dashboards have been updated for the models Loader 11 t - 56 t and Compact Loader 5.5 t - 9.5 t with “Volvo (GPMECU) General purpose machine electronic control unit 3 Diagnosis” automatic transmission system.



## YANMAR Engine

- The parameter dashboards have been updated for all the vehicles with the “Yanmar ECU Engine Control Unit” Diesel injection system.



- The procedure dashboards have been updated for all the vehicles with the “Yanmar ECU Engine Control Unit” Diesel injection system.

Cylinder cut-off ?

CYL 1 CYL 2 CYL 3

Cylinder: 1 ?

Right/left arrow to select the cylinders  
Press CONFIRM to activate/deactivate  
Press CANCEL to exit

1	2	3	-	←
4	5	6	.	- ↑ +
7	8	9	0	← ↓ →

CONFERMA

ANNULLA

Injector coding ?

C2A5G5EA

C2A5G5EA

A1AAA6EA

A1AAA6EA

A1IH353A

A1IH353A

Select the injector to modify using the numeric keypad (1 ... 4)  
Press CANCEL to exit

1	2	3	-	←
4	5	6	.	- ↑ +
7	8	9	0	← ↓ →

CONFERMA

ANNULLA

**IMPORTANT NOTICE FOR CUSTOMERS WHO OWN A PC with Windows 7**  
 Dear customers, Windows 7 is by now an obsolete operating system, no longer supported by Microsoft.

To make the most of all the functions in TEXA's IDC5 diagnostic software, we recommend you update your Personal Computer to the latest version of the operating system Windows 10.

### **IMPORTANT NOTICE**

Starting from April 2021, the new IDC5 software versions will no longer support the AXONE 4 tools with a serial number that starts by DA8.

For further information contact your official TEXA distributor.

### **DIAGNOSTIC LIMITATIONS WARNING**

Although TEXA strives to keep its diagnostic tools up to date, it ever more often finds itself having to deal with very complex vehicle electronics that requires tools with advanced technological features.

For this reason we inform you that on some vehicles the diagnosis or certain specific functions may not be compatible with old generation TEXA tools (VCIs) that have a serial number with "DNTxxxxxxx".

For further information contact your TEXA retailer.

Good luck with your work!

TEXA S.p.A

Please note that this document is confidential. Total or partial copying without authorisation by TEXA S.p.A. is forbidden. Data, descriptions and illustrations may vary with respect to those shown here. TEXA S.p.A. reserves the right to make changes of any kind to its products, without prior notice.