

BAP LED

design Alberto Meda / Paolo Rizzatto, 2011

**LUCE
PLAN**

Type: Table


Lamps: LED 10W warm white 2700K, 466 lm, dimmer ^(*) EEL: A

Product use: Indoor

Materials: Aluminium body, glass-reinforced nylon head.

Colors: Structure in white or black

Description: Specifically designed to provide correct lighting when used with computer monitors, the new BAP with LED source guarantees the best colour temperature with a lower energy consumption. The slim and elegant head integrates a blue polycarbonate filter.

Insulation class: 

Reference code: Structure D19LLED

220V	1D19LL000001	black
	1D19LL000002	white
240V	1D19LL000601	black
	1D19LL000602	white

Table base D19 /1

1D19/1 N00001	black
1D19/1 N00002	white

Surface mount D19/2

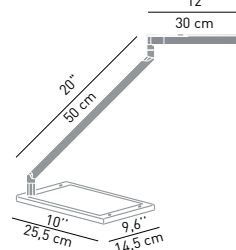
1D19/2000001	black
1D19/2000002	white

Fixing pin D19 /8

1D19/8000001	black
1D19/8000002	white

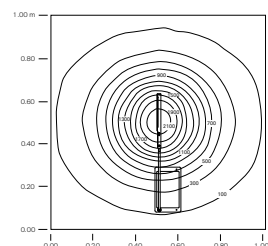


D19LED + D19/1

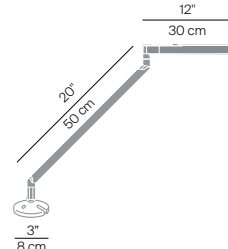


Isolux

head h 50cm
max Lux = 2191 lx

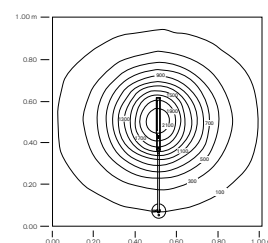


D19LED + D19/2



Isolux

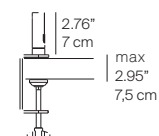
head h 50cm
max Lux = 2191 lx



D19 /8 desk joint



D19 /9 clamp



^(*) The LED lamps cannot be changed in the luminaire

