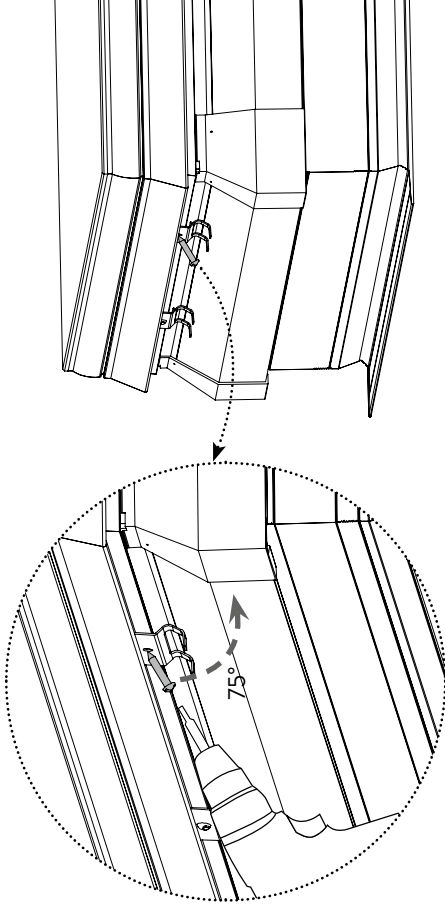
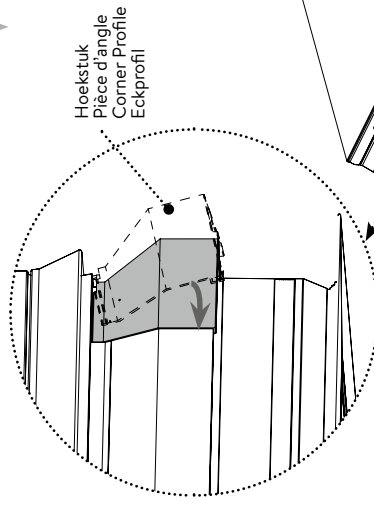
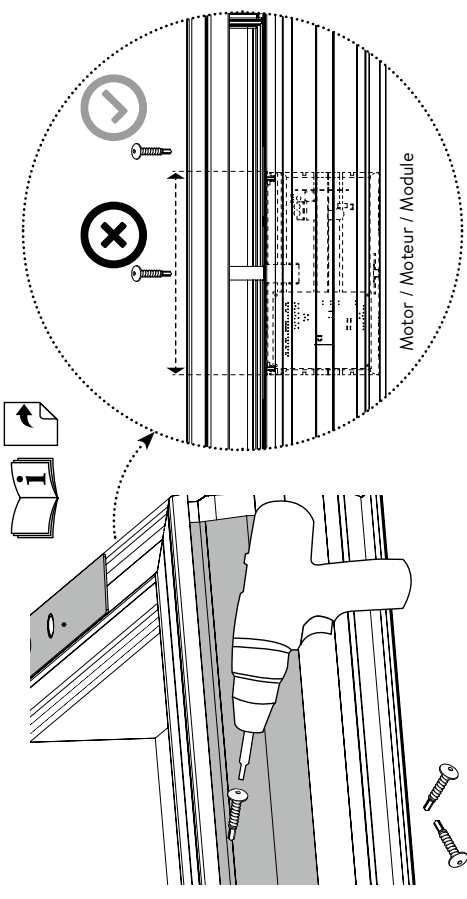



* solin monteren onder het lipje van de opstand - inschroeven onder hoek van 75°
 monter le solin sous le rebord de la costière - visser à un angle de 75°
 install the flashing profile underneath the curb lip - screw in at an angle of 75°
 Schürzenprofil unter die Aufsatzkranzkannte montieren - in einem Winkel von 75° einschrauben

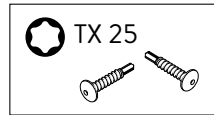





← STANDARD SIDE →

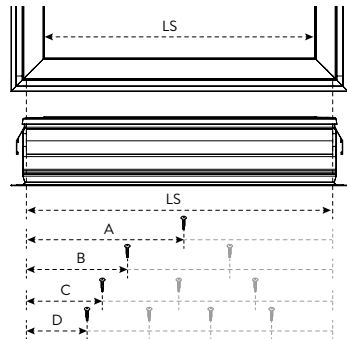
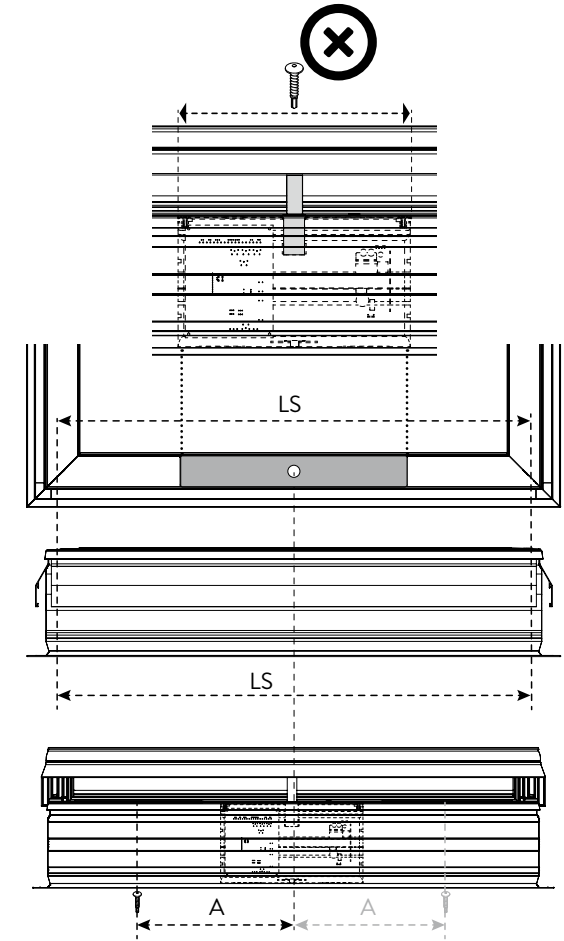
← SIDE WITH MODULE * →

DM (mm)	LS (mm)		A (mm)	B (mm)	C (mm)	D (mm)
400	470	0				
500	570	0				
600	670	0				
700	770	1	385			
750	820	1	410			
800	870	1	435			
900	970	1	485			
1000	1070	1	535			
1050	1120	1	560			
1100	1170	1	585			
1200	1270	1	635			
1250	1320	1	660			
1300	1370	1	685			
1400	1470	2		490		
1450	1520	2		507		
1500	1570	2		523		
1550	1620	2		540		
1600	1670	2		557		
1650	1720	2		573		
1700	1770	2		590		
1750	1820	2		607		
1800	1870	2		623		
1900	1970	2		657		
2000	2070	2		690		
2100	2170	3			543	
2200	2270	3			568	
2250	2320	3			580	
2300	2370	3			593	
2400	2470	3			618	
2500	2570	3			643	
2800	2870	4				574



1 X MOTOR/MOTEUR/MODULE:


DM (mm)	LS (mm)		A (mm)	B (mm)	C (mm)
600	670	0	235		
700	770	0	260		
800	870	2	285		
900	970	2	310		
1000	1070	2	355		
1100	1170	2	360		
1200	1270	2	385		
1300	1370	2	410		
1400	1470	2	435		
1500	1570	2	460		
1800	1870	2	535		
2000	2070	2	585		

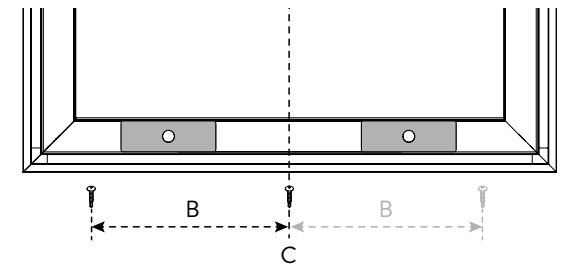


De afmeting van de solin = dagmaat + 7 cm
 Dimension du solin = mesure jour + 7 cm
 Size of the flashing profile = daylight size + 7 cm
 Abmessung des Aufsatzkranzes = Tageslichtmaß + 7 cm

DM = dagmaat / mesure jour / daylight size / Tageslichtmaß
 LS = lengte solin / longueur du solin / length flashing profile / Länge des Schürzenprofils

2 X MOTOR/MOTEUR/MODULE:

DM (mm)	LS (mm)		A (mm)	B (mm)	C (mm)
1400	670	3		600	0
1500	770	3		625	0
2000	2070	3		770	0



(*) in case of a complete set / only glass domes