

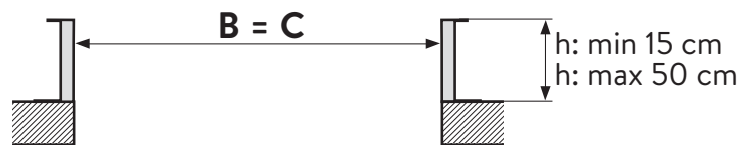
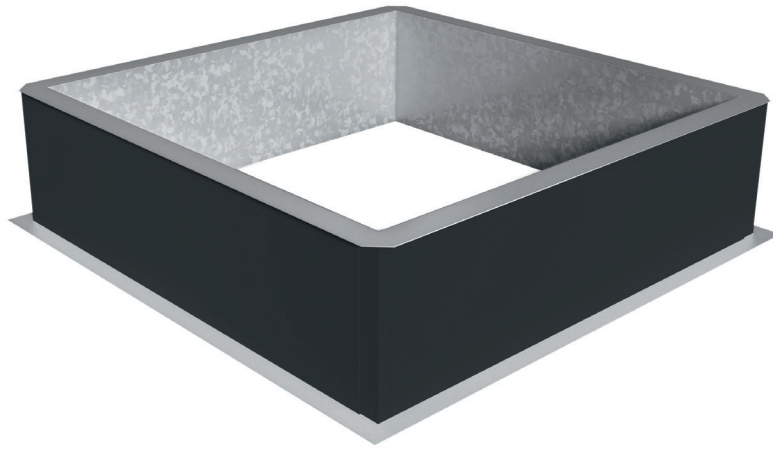


TECHNICAL FILE

# Skylux<sup>®</sup>

Metal curb EP





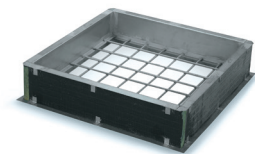
## General product description

The Skylux® dome curbs are made of galvanised steel plate. They always are vertical and equipped with a bottom flange (80 mm) and a top flange (55 mm). The square and rectangular curbs are insulated with a combination of PUR and bituminous rockwool (total thickness of 50 mm) and can be equipped with different types of roof membranes. The round curbs are not insulated. The curb can be equipped with brackets and hinges. This curb has a CE label according to EN 1873:2014+A1:2016 combined with a Skylux® skylight.

## Options

### 1. Burglar proof grid

The burglar proof grid consists of a welded frame with L-profiles (30/20/3), in which a grid with ribbed bars of diameter  $\varnothing$  10 mm is welded. The axis distance between the bars is 150 mm. The grid is galvanised.



### 2. Condensationgutter



## Specific characteristics

Corrosion characteristics .....	Sendzimir galvanisation 275 g/m <sup>2</sup>
Thermal characteristics .....	U value of the insulation is 0.56 W/m <sup>2</sup> K U <sub>up</sub> * value: 0.51 W/m <sup>2</sup> K (for insulated curbs)
Sizes .....	Tolerance on diameter -2/+6 Daylight size (B) = roof opening (C) Thickness wall steel: 1.5 mm Thickness wall insulation: 50 mm Heights: 150, 200, 250, 300, 400 and 500 mm

\* U<sub>up</sub> : U value (upstand) or insulation value of the curb according to EN 1873:2014+A1:2016 and determined in accordance with EN 10077-2:2012

## Attestations and certificates

- CE according to EN 1873:2014+A1:2016 combined with a Skylux® dome



EN 1873:2014+A1:2016

SKYLUX NV  
SPINNERIJSTRAAT 100 - B-8530 STASEGEM  
T +32 (0)56 20 00 00  
INFO@SKYLUX.BE  
WWW.SKYLUX.EU

