

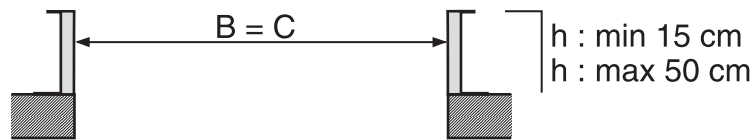
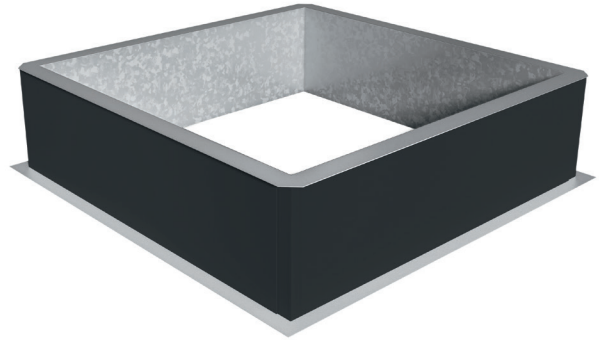


TECHNICAL FILE

Skylux®

Metal curb





General product description

The Skylux® dome curbs are made of galvanized steel plate. They always are vertical and equipped with a bottom flange (80 mm) and a top flange (55 mm). The square (80 mm) and rectangular curbs are insulated with bituminous rockwool (40 mm) and can be equipped with different types of roof membranes. The round curbs are not insulated.

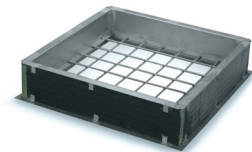
The curb can be equipped with brackets and hinges.

This curb has a CE label according to EN 1873:2014+A1:2016 combined with a Skylux® skylight.

Options

1. Burglar proof grid

The burglar proof grid consists of a welded frame with L-profiles (30/20/3), in which a grid with ribbed bars of diameter \varnothing 10 mm is welded. The axis distance between the bars is 150 mm. The grid is galvanized.



2. Condensationgutter



Specific characteristics

Mechanical characteristics	Sendzimir galvanisation 275 g/m ²
Thermal characteristics	U value of the insulation is 1 W/m ² K U _{up} * value: 0.84 W/m ² K (for insulated rectangular curbs)
Sizes	Tolerance on diameter -2/+6 Daylight size (B) = roof opening (C) Thickness wall steel: 1.5 mm Thickness wall insulation: 40 mm Heights: 150, 200, 250, 300, 400 and 500 mm

* U_{up} : U value (upstand) or insulation value of the curb according to EN 1873:2014+A1:2016 and determined in accordance with EN 10077-2:2012

Attestations and certificates

- CE according to EN 1873:2014+A1:2016 combined with a Skylux® dome



EN 1873:2014+A1:2016

SKYLUXTM
SPINNERIJSTRAAT 100 - B-8530 STASEGEM
T +32 (0)56 20 00 00
INFO@SKYLUX.BE
WWW.SKYLUX.EU

