

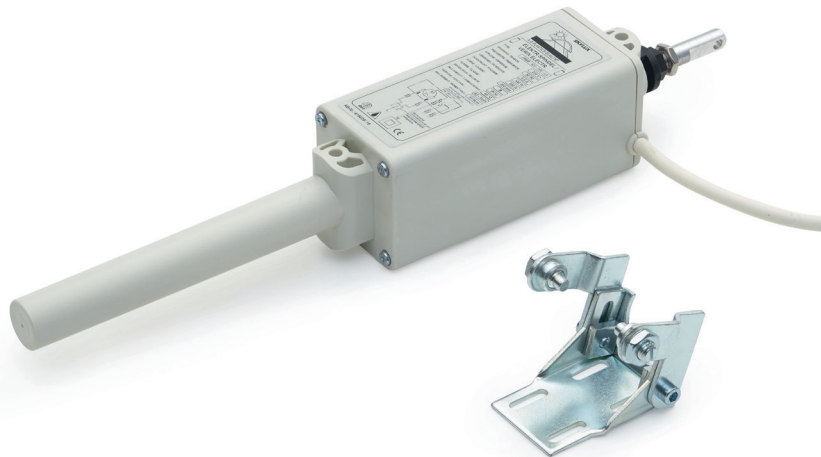


TECHNICAL FILE

Skylux[®]

Electric spindle





General product description

The Skylux® electric spindle is driven by an electromotor (of the type JMBB 500-300LA) of 220V. The brass spindle opens the dome up to a maximum opening of 310 mm. The spindle is delivered with adapted upper and under bracket.

Specific characteristics electric spindle

Dimensions spindle	
Length	430 mm
Diameter Ø	70 mm
Net weight	2000 g
Capacity	140 W
Tension	220-230 Volt
Shearing force	500N
Opening / stroke	300 mm

Alternative

A double electric 230 V spindle is also possible but has no connecting rod between both spindles.

SKYLUX NV
SPINNERIJSTRAAT 100 - B-8530 STASEGEM
T +32 (0)56 20 00 00 - F +32 (0)56 21 95 99
INFO@SKYLUX.BE
WWW.SKYLUX.BE

SKYLUX
Hello daylight!