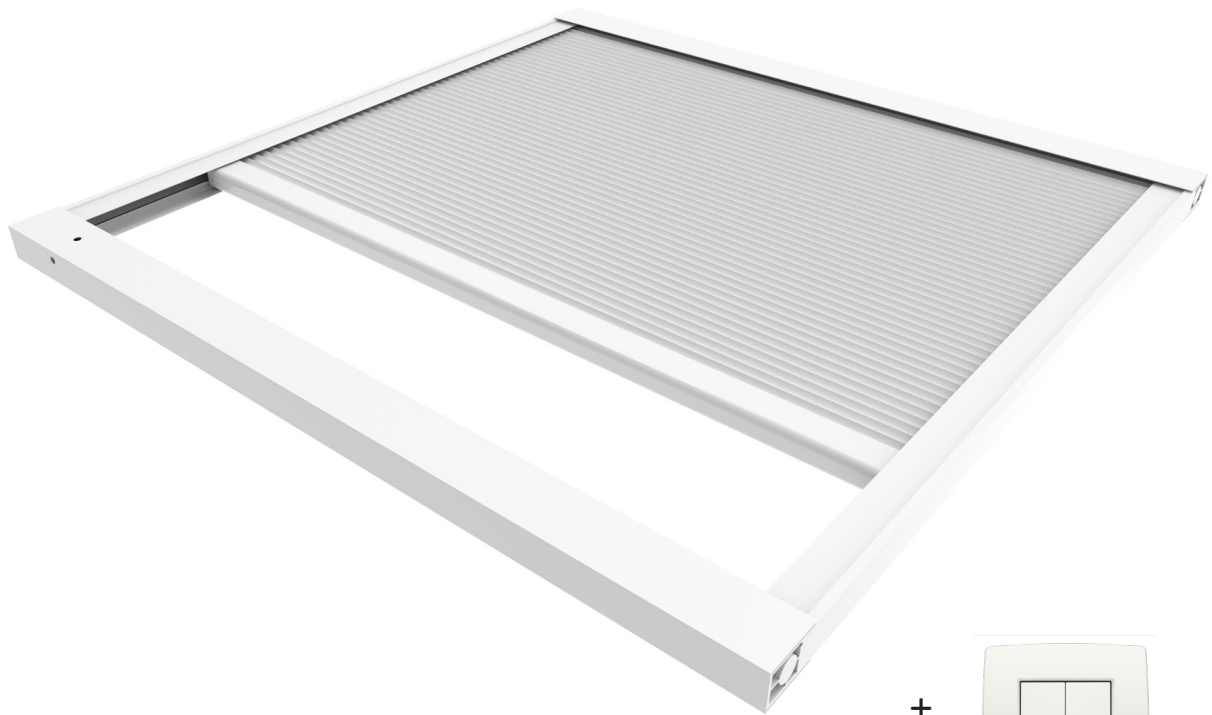


TECHNICAL FILE

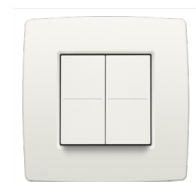
Skylux[®]

Electric screen 230V





+



wireless control
included:
Niko switch
(Bluetooth)

General product description

The stand-alone electric screen with wireless control is available as an insect screen, a sunblind or a blackout blind. Skylux offers an electrically powered version connected to the mains electricity supply (230 volts). It can be installed fixed and openable flat roof windows and plastic skylights.

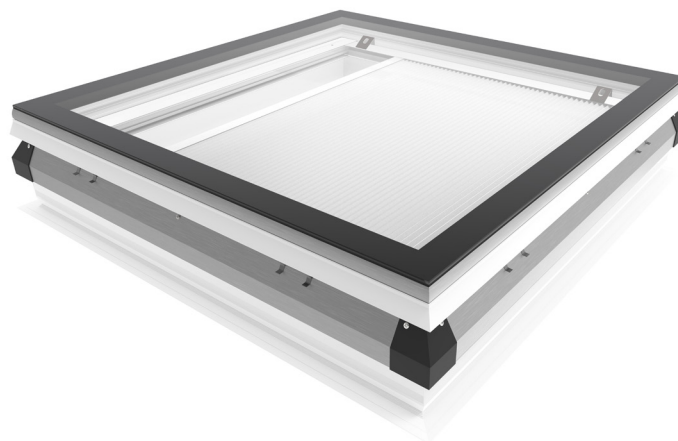
The electric screen is an assembled unit that consists of white coated aluminium profiles of 40x40 mm around with a mobile screen fabric. When the screen fabric is open, there are no visible wires.

In case of a fixed configuration, the screen can be installed in the daylight size of the curb afterwards. The system is controlled by a Bluetooth impulse switch. There's no need for extra cables between the switch and screen, enabling an easy installation of the screen. The installation is done with mounting clips on the transverse sides of the electric screen.

If you choose an openable plastic skylight, the screen - version 230 volts - is installed in the roof opening.

Features

- Keeps out solar heat
- Screen type can be chosen: **sunblind, blackout blind or insect screen**
- No visible wires
- Compact and pre-assembled unit
- Silent system
- Wireless control included
- Power supply: mains supply (230 volts)
- Can also be installed afterwards
- Can be installed from the inside of the skylight or flat roof window



Version powered by mains supply (230 volts)

The electric screen - version 230 volts - is connected to the mains electricity supply. A 230 V power supply is therefore needed where the flat roof window or skylight will be installed. The outgoing cable is a VTMB 3G1.5 type.

As standard, the electric cable comes out in a corner on the top side of the screen and can therefore be pulled through the curb to the outside.

The electric cable can also be repositioned in the profiles of the screen and pulled further on the inside of the curb (details: see mounting instructions).




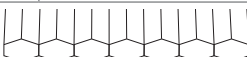
General characteristics

Room temperature	< 30°C
Operating temperature.....	-20°C to +60 °C
Colour aluminium profiles	White
Outcoming electric cable.....	VTMB 3G 1.5

General characteristics fabric

Choose the type of fabric during your purchase.



	 sunblind (S)	 blackout blind (V)	 insect screen (I)
Functioning temperature	-20°C / +60°C		
Colour inside	white	light grey	white
Colour outside	white	light grey	white
Fabric material	100% polyester	polyester with aluminium foil on the inside	100% polyethylene
Light transmission	± 30% (transmission)	± 0.5% (transmission)	± 90% (transmission)
Type	honeycomb (double pleated) 		

Please note: for larger dimensions, the folded fabric is still slightly visible on the profile side.

Specific characteristics: wireless Bluetooth Niko switch

This pulse switch allows you to control your Bluetooth operated Skylux system. There is no need for extra cables or breaking walls. The switch can be installed on a European socket box, screwed on a wall (screws are not included in the delivery) or attached on a flat surface with double-sided adhesive strips (included in the delivery). The wireless and battery-free switch is powered by an integrated kinetic energy generator. The system is operated (open-stop-close) by pushing a single button. The switch has 4 buttons and can therefore operate 4 functions in total. (The switch is provided with four push buttons and the control of the screen is connected to the top left push button by default.)

Capacity

Powered by: integrated kinetic energy generator

Radio transceiver

RF protocol: Bluetooth low-energy

Operating frequencies: 2.402 ... 2.480 GHz

Range

Bereik inside: 10 m*

Operating conditions

Temperature: -25 °C to +65 °C

Mechanical data

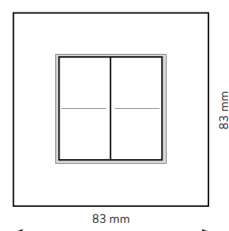
Dimensions: 83 x 83 x 15 mm

Weight: 25 g

Degree of protection: IP20



Installation height: 110 cm


Colour: white (approximately RAL 9010)



drukknop linksboven).

Available sizes (daylight sizes)

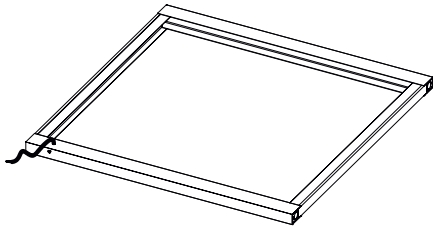
	Daylight size = roof opening (cm)	Screen fabric starts on short (S) side or long (L) side
Square 	40 x 40	L
	50 x 50	L
	55 x 55	L
	60 x 60	L
	70 x 70	L
	75 x 75	L
	80 x 80	L
	85 x 85	L
	90 x 90	L
	100 x 100	L
	105 x 105	L
	110 x 110	L
	120 x 120	L
	130 x 130	L
	140 x 140	L
150 x 150	L	
Rectangular 	40 x 70	L
	40 x 100	L
	40 x 130	L
	40 x 140	L
	40 x 160	L
	40 x 190	L
	40 x 220	S
	40 x 280	S
	45 x 105	L
	50 x 70	L
	50 x 80	L
	50 x 100	L
	50 x 110	L
	50 x 140	L
	50 x 170	L
	50 x 200	L
	50 x 230	S
	60 x 80	L
	60 x 90	L
	60 x 120	L
	60 x 130	L
	60 x 150	L
	60 x 180	L
	60 x 200	L
	70 x 100	L
	70 x 130	L

	Daylight size = roof opening (cm)	Screen fabric starts on short (S) side or long (L) side
Rectangular 	70 x 150	L
	70 x 160	L
	70 x 200	L
	70 x 220	S
	75 x 105	L
	75 x 125	L
	75 x 165	L
	75 x 175	L
	75 x 225	S
	80 x 110	L
	80 x 130	L
	80 x 140	L
	80 x 160	L
	80 x 180	L
	80 x 200	L
	80 x 220	S
	80 x 230	S
	80 x 250	S
	80 x 280	S
	90 x 120	L
	90 x 150	L
	90 x 180	L
	90 x 210	S
	100 x 130	L
	100 x 150	L
	100 x 160	L
	100 x 180	L
	100 x 200	L
	100 x 220	S
	100 x 230	S
	100 x 230	S
	100 x 250	S
	100 x 280	S
	100 x 300	S
	105 x 165	L
	105 x 225	S
	110 x 140	L
	110 x 170	L
	110 x 230	S
	120 x 140	L
120 x 150	L	
120 x 180	L	
120 x 210	S	
130 x 160	L	

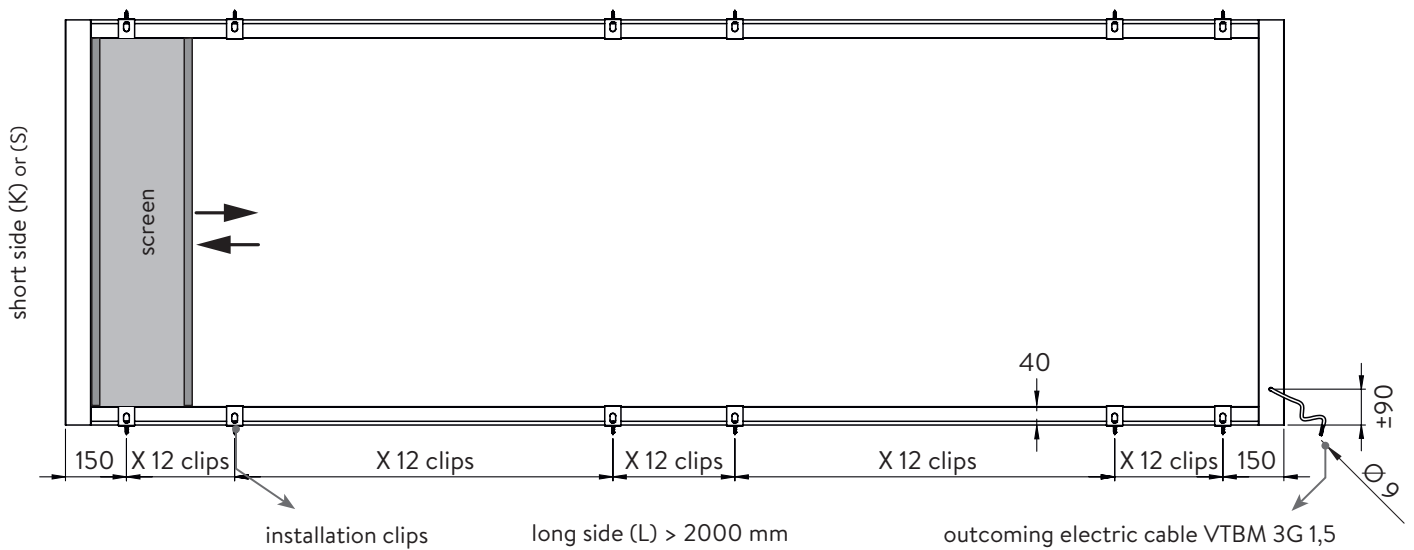
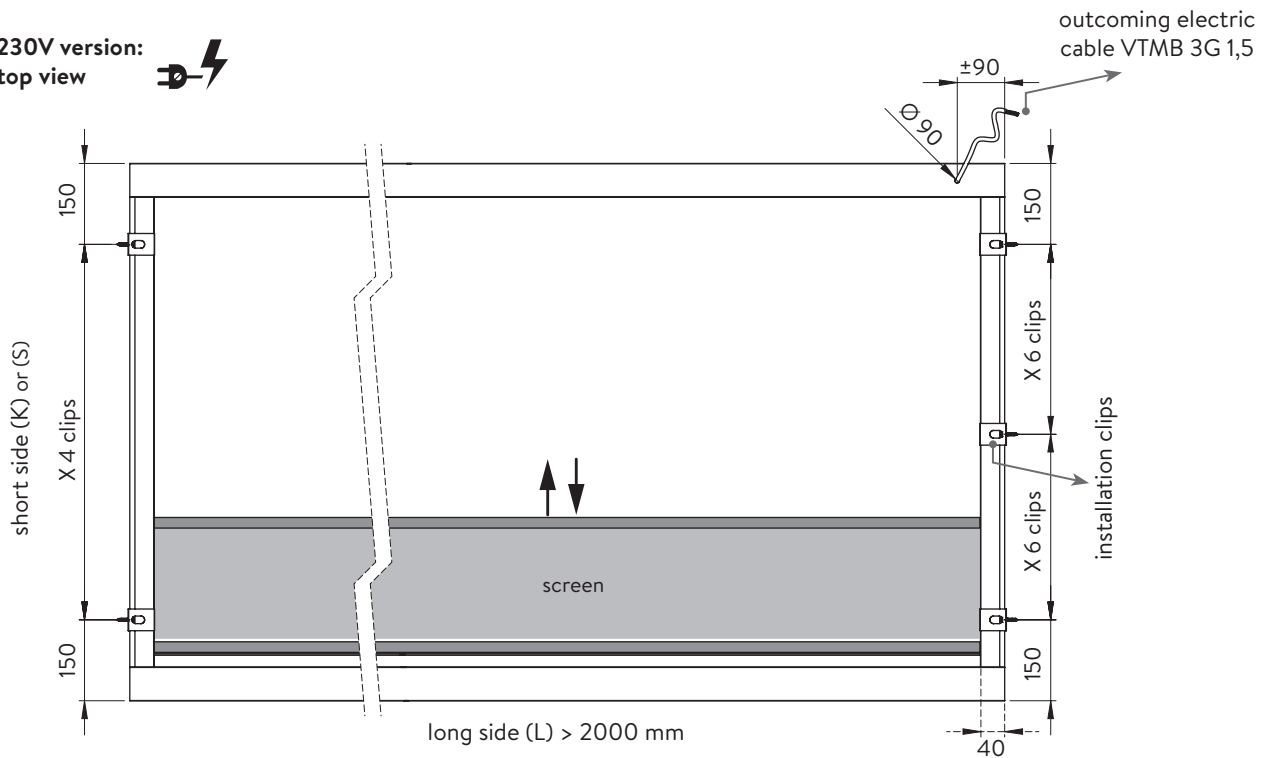
Depending on the size, the screen fabric starts on the short (K or S) side or the long (L) side. The fabric starts on the long side by default. However, if the long side is larger than 2000 mm, however, the fabric always starts on the short side.

Technical drawings

• 230V version: 

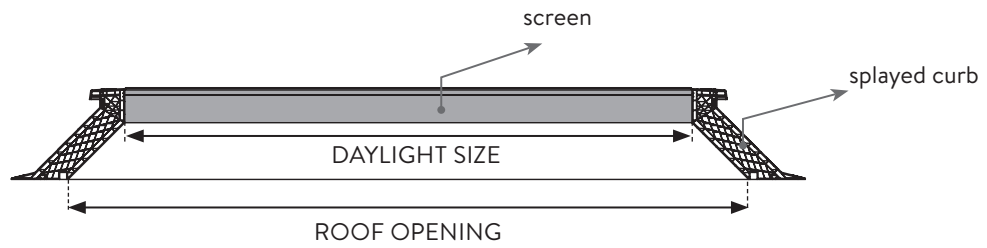


• 230V version:
top view 

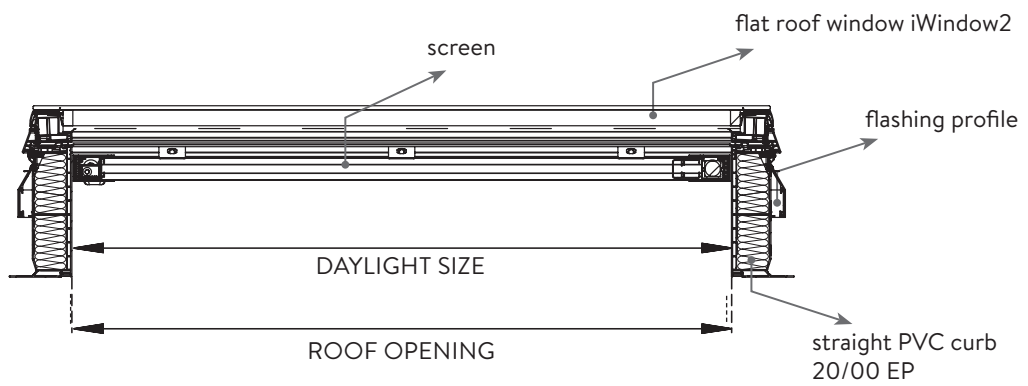


- Size and position of built-in screen: always in the daylight size of the curb

- in case of a splayed curb:



- in case of a straight curb:





sunblind



blackout blind



insect screen

SKYLUX NV
SPINNERIJSTRAAT 100
B-8530 STASEGEM
T +32 (0)56 20 00 00
INFO@SKYLUX.BE
WWW.SKYLUX.EU

