

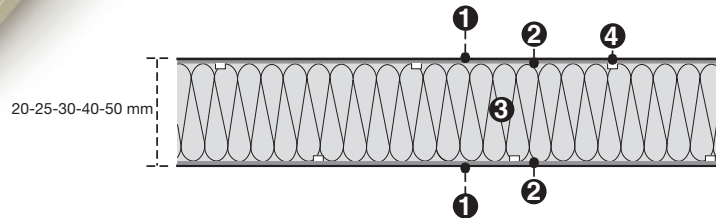


TECHNICAL FILE

# Polytape<sup>®</sup>

Self-adhesive polystyrene panel (XPS)





## General product description

Polytape is an extruded polystyrene sheet laminated on both sides with an acrylic adhesive layer. The adhesive layer is protected by easily removable silicone-coated paper. Polytape is primarily used for window, door, veranda or conservatory construction, where insulating finishing panels have to be made by the installer him or herself. Polytape adheres right away and extremely powerfully to most dry and clean surfaces, is lightweight, insulates well and is extremely easy to process.

1. siliconised paper
2. acrylic adhesive layer
3. extruded polystyrene XPS
4. ventilation groove

## Specific characteristics

thickness (mm)	20	25	30	40	50
weight (g/m <sup>2</sup> )	740	925	1110	1480	1850
U-value (W/m <sup>2</sup> .K)	1,19	0,98	0,78	0,60	0,51
dimensions (mm)	1000 x 3000				
XPS density (kg/m <sup>3</sup> )	33 ± 3				
storage temperature (°C)	18 to 20				
storage humidity (%)	30 to 70				
operating temperature (°C)	-40 to 70				

## Note

The user must be absolutely certain of the compatibility between Polytape® and the material on which it is to be applied. The manufacturer or distributor can provide advice on this, but cannot accept any responsibility. The silicone-coated paper may display evidence of corrugations. This does not affect the quality of the adhesive layer.

## Fire reports

- Fire certificate: Acermi no. 99/c/74/551
- Fire class: E

SKYLUX NV  
 SPINNERIJSTRAAT 100 - B-8530 STASEGEM  
 T +32 (0)56 20 00 00 - F +32 (0)56 21 95 99  
 INFO@SKYLUX.BE  
 WWW.SKYLUX.BE

**SKYLUX**<sup>®</sup>  
*Hello daylight!*