



EN

Pleated blind

Mounting instructions

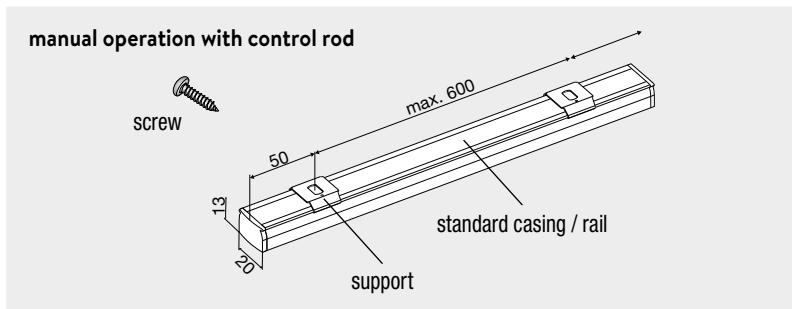

SKYLUX[®]
Hello daylight!

INSTALLATION OF PLEATED BLIND: P3600

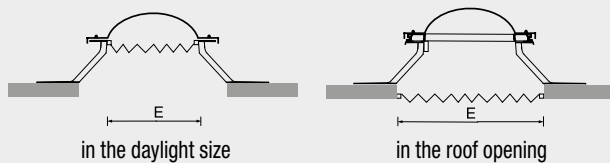
MANUAL INTERIOR SCREEN - PLEATED BLIND FOR FLAT ROOF WINDOW/SKYLIGHT

INSTALLATION WITH SUPPORTS

When installing the casing, fix the supports at 50 mm (standard casing) from the end of the casing, with a maximum distance of 600 mm between the supports. Use the right screw type for the installation.



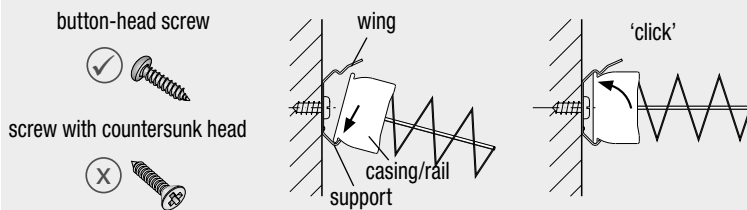
INSTALLATION in the daylight size or in the roof opening



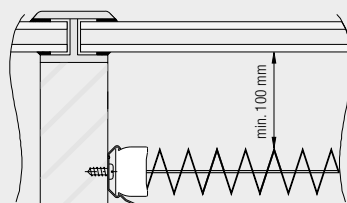
E = ordering size for the manual interior screen / pleated blind

Screw the support into the daylight size or in the roof opening. Use a button-head screw. Recommended: DIN 7981 Ø 3.9 x 16 mm for window frames made of PVC or wood. Do not use screws with countersunk heads.

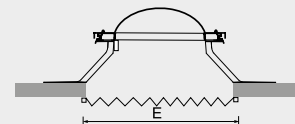
Slide the front of the rail in the supports. Now push the back of the rail in the supports until you here a 'click' to make sure that the rail is secured and in the correct position..



Please note! The distance between the blind and the window frame must be at least 100 mm to guarantee sufficient ventilation. In addition, ventilation openings should be considered. If there is insufficient air circulation, there is a risk of heat and condensation accumulation. We accept no liability for fabric damage caused by water drops or insect excrement.



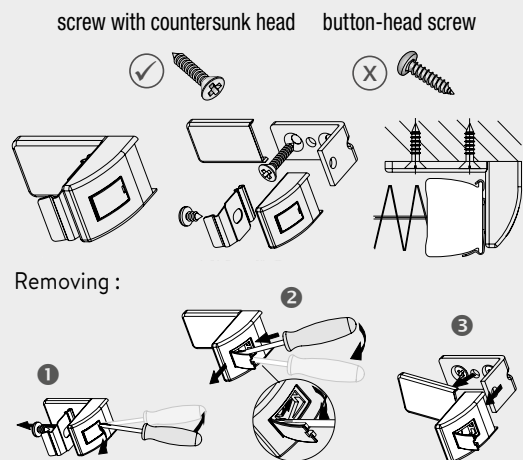
INSTALLATION below the skylight



E = ordering size for the manual interior screen / pleated blind

Screw the support on the bottom of the roof opening. Use a screw with countersunk head, suited for roof opening surface (wood, ...). Do not use button-head screws.

Slide the front of the rail in the supports. Now push the back of the rail in the supports until you here a 'click' to make sure that the rail is secured and in the correct position.



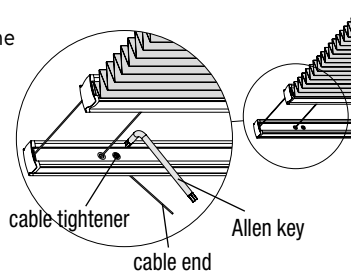
TIGHTENING THE CABLE

After installing the pleated blind, the cable must now be tightened.

1. Hold the cable end with pliers or your hand.
2. Loosen the screw gently with the Allen key (turn the key to the left).
3. Tighten the cable (with pliers or your hand).
4. Tighten the screw firmly (turn the key to the right).
5. The final cable tension is achieved by tightening the cable tensioners.

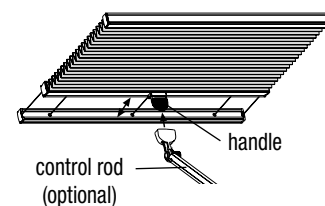
Repeat steps 1 to 5 for blinds with more cables.

Please note! All cables must be tensioned equally.



CONTROL

Use the handle to open and close the tightened pleated blinds, use a control rod if necessary. Attach the control rod to the handle.



MAINTENANCE

Our fabrics have an anti-static surface and therefore repel dust and dirt particles. Brush the fabric regularly. The manufacturer declines all responsibility for fabric damage caused by condensation, window cleaning products or insects.

GEBRUIK ALLEEN DOOR SKYLUX GELEVERDE ORIGINELE ONDERDELEN. BIJ GEBRUIK VAN NIET-ORIGINELE ONDERDELEN VERVALT DE GARANTIE.
UTILISEZ UNIQUEMENT LES PIÈCES ORIGINALES DE SKYLUX. VOUS N'AVEZ PLUS DROIT À LA GARANTIE SI DES PIÈCES NON ORIGINALES SONT UTILISÉES.
ONLY USE ORIGINAL PARTS SUPPLIED BY SKYLUX. FAILURE TO USE ORIGINAL PARTS VOIDS THE GUARANTEE.
VERWENDEN SIE NUR DIE VON SKYLUX GELIEFERTEN ORIGINALTEILE. BEI GEBRAUCH VON NICHT-ORIGINALTEILEN VERFÄLLT JEDE GARANTIE.

DEZE RICHTLIJNEN HEBBEN ENKEL EEN ADVISEREND KARAKTER. ZIJ STREKKEN ENKEL TEN TITEL VAN INLICHTING. DE PLAATSING GEBEURT ONDER UITSLUITENDE
VERANTWOORDELIJKHEID VAN DE KLANT.
CES CONSIGNES DE POSE SONT À TITRE INDICATIF. LA POSE DU PRODUIT SE FAIT SOUS LA RESPONSABILITÉ EXCLUSIVE DU CLIENT.
THESE GUIDELINES ONLY SERVE AS ADVICE AND INFORMATION. INSTALLATION IS CONDUCTED UNDER THE SOLE RESPONSIBILITY OF THE CUSTOMER.
DIESE RICHTLINIEN SIND LEDIGLICH EMPFEHLUNGEN. SIE DIENEN NUR DER INFORMATION. DIE MONTAGE ERFOLGT UNTER ALLEINIGER VERANTWORTUNG DES KUNDEN.

SKYLUX IS A REGISTERED BRAND OF AG.PLASTICS
SPINNERIJSTRAAT 100 - B-8530 STASEGEM
T +32 (0)56 20 00 00 - F +32 (0)56 21 95 99
INFO@SKYLUX.BE
WWW.SKYLUX.EU

