

The Skylux® insect screen is delivered in a labelled cardboard box.

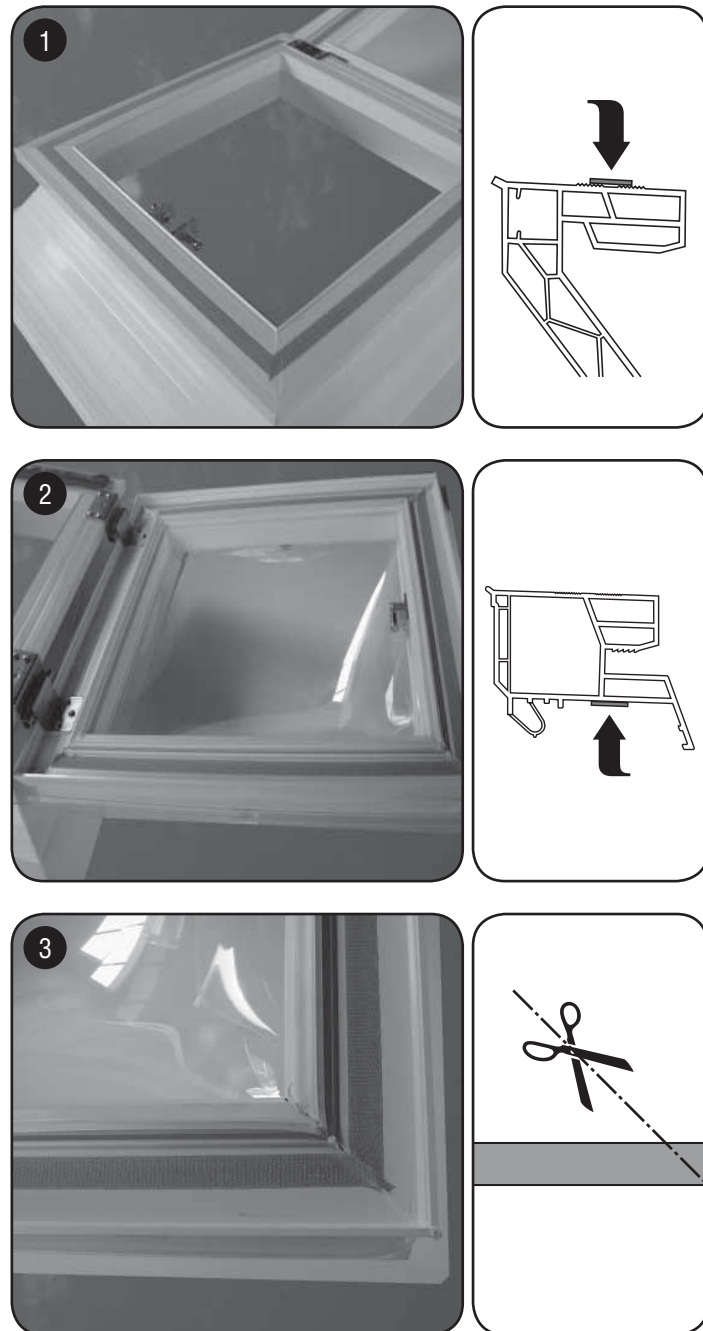
The set consists of :

- a roll one-sided adhesive hook sealing (**figure 1**)
- a harmonica shaped glass fibre screen equipped with loop sealing on the bottom- and upside (**figure 2**)
- 2 elastic conductors + 6 screws (**figure 3**) *
- these installation instructions

Remark:

The Skylux® insect screen is to be used with the Skylux® GRP 15/20 curb, (fig.a), the Skylux® PVCu curb 16/20 (fig. b), 16/0 (fig. c), or 30/20 (fig. d), combined with a Skylux® PVCu frame (fig. e), on which the Skylux® dome (fig. f) is mounted.

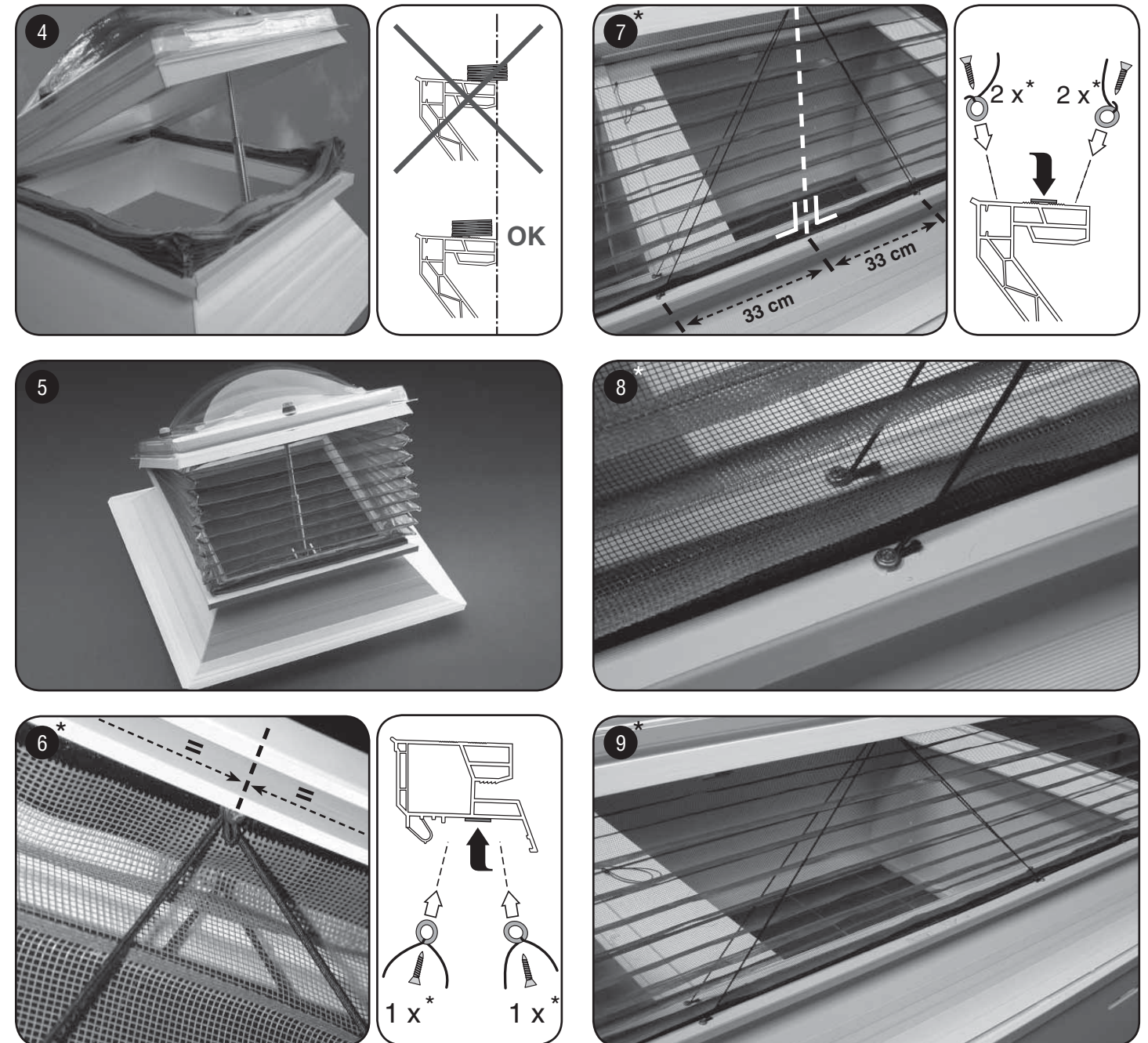
The insect screen is U-shaped. The frame opens smoothly up to 300 mm after the installation of the insect screen.



1 Degrease the curb flange with thinner. Fix the hook sealing on the ribbed zone of the curb flange. The hinge side remains clear, so that the insect screen is fixed on the front and sideways.

2 Degrease the inner side of the frame with thinner. Fix also hook sealing on the inner side of the frame.

3 Please keep in mind, that the corners must be cut under angle and joined together.



4 Fix the screen on the curb now. Keep in mind that the folded screen does not reach out the border of the curb flange.

5 Please close the dome now. The upper side of the insect screen will stuck with the hook sealing over the loop sealing. Verify if nothing reaches out of the frame and the curb. The insect screen has been installed and nasty flies or other insects will no longer trouble you.

Continuation for daylight size > 1 m

6 * Determine the middle of the longest frame side and screw the middle ring in this side.

7 * Measure 33 cm on the left and on the right of the middle point of the curb. At this point (on the left and on the right), screw the ring in the curb.

8 9 * Do this on the inside and the outside of the insect screen so that the wire gauze sticks between the 2 elastic conductors.

* when the daylight size of the hinging side is > 1 m, 1 conductor set is needed ; when the daylight size of the hinging side is > 1,5 m, 2 conductor sets are needed.

* when the daylight size of the hinging side is > 1 m, 1 conductor set is needed ; when the daylight size of the hinging side is > 1,5 m, 2 conductor sets are needed.